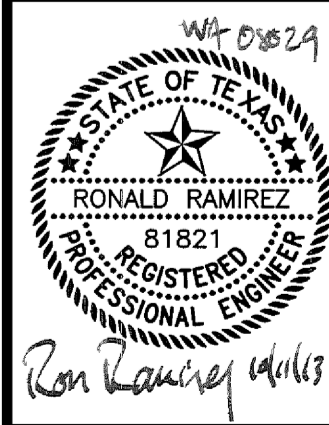
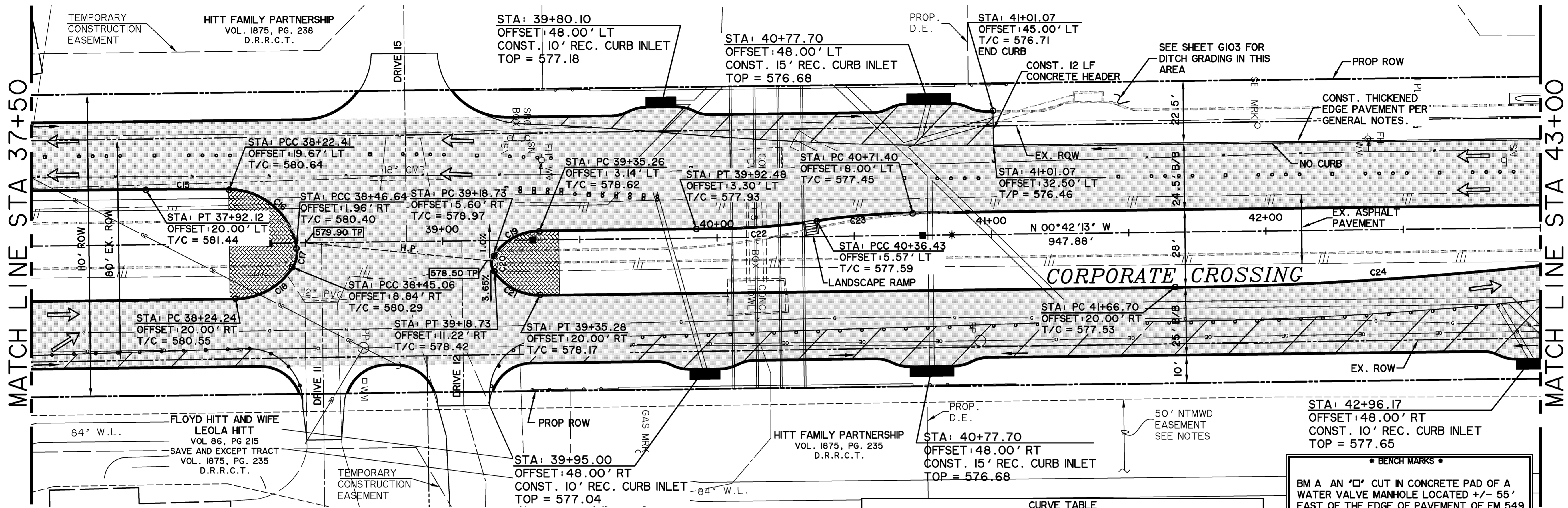


**CITY OF ROCKWALL
 IMPROVEMENTS TO
 CORPORATE CROSSING
 (FROM S.H. 276 TO I.H. 30)**

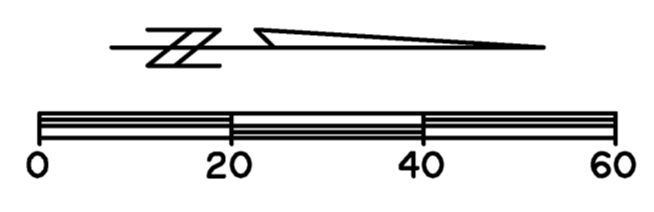
**PAVING
 PLAN & PROFILE
 STA 37+50 TO STA 43+00**



COPYRIGHT ©
 WIER & ASSOCIATES, INC.
 LAST SHEET EDIT
 DATE: 09-15-2013
 WA# 08029
**SHEET NO.
 P107**



- NOTES FOR WORK IN NTMWD EASEMENT:**
- CONTACT PAUL LYDAY, NTMWD ENGINEERING @ 972-442-5405 48 HOURS IN ADVANCE OF ANY WORK WITHIN NTMWD EASEMENT
 - FRANCHISE AND PUBLIC UTILITIES ARE NOT PERMITTED IN NTMWD EASEMENT EXCEPT FOR CROSSINGS
 - CONTRACTOR SHALL TAKE CARE TO AVOID DAMAGE TO EXISTING PIPELINE WHEN WORKING IN NTMWD EASEMENT. ANY DAMAGE TO PIPELINE RESULTING FROM CONSTRUCTION ACTIVITIES SHALL BE REPAIRED BY CONTRACTOR TO THE SATISFACTION OF NTMWD AT CONTRACTOR'S EXPENSE.



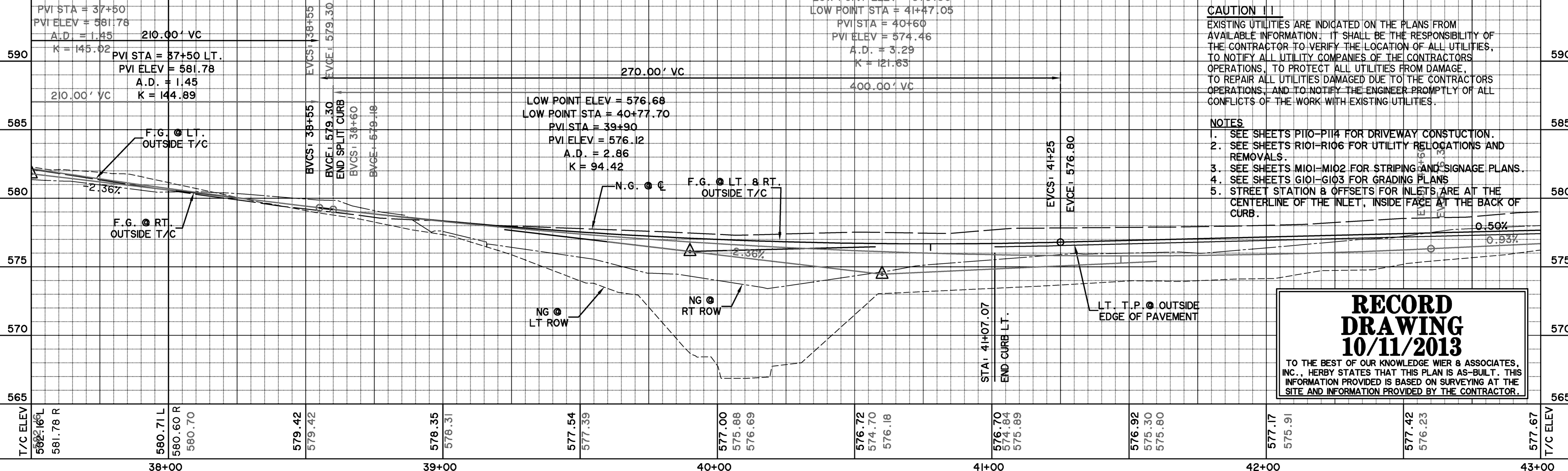
CURVE TABLE						
NO.	RADIUS	DELTA	ARC	TANGENT	CHORD	BEARING
C15	1399.50'	1°14'25"	30.29'	15.15'	30.29'	S00°05'01"E
C16	25.00'	81°01'26"	35.35'	21.36'	32.48'	S41°02'54"W
C17	10.00'	41°20'42"	7.22'	3.77'	7.06'	N77°46'02"W
C18	25.00'	56°23'28"	24.61'	13.40'	23.62'	N28°53'57"W
C19	20.00'	55°43'47"	19.45'	10.57'	18.70'	S28°34'07"E
C20	5.00'	68°21'23"	5.97'	3.40'	5.62'	N89°21'48"E
C21	20.00'	55°51'50"	19.50'	10.60'	18.74'	N27°13'42"E
C22	250.50'	10°04'43"	44.06'	22.09'	44.01'	N03°39'46"W
C23	249.50'	8°03'21"	35.08'	17.57'	35.05'	S04°40'27"E
C24	1399.50'	6°53'34"	168.37'	84.28'	168.26'	N04°09'00"W

BENCH MARKS

BM A AN "X" CUT IN CONCRETE PAD OF A WATER VALVE MANHOLE LOCATED +/- 55' EAST OF THE EDGE OF PAVEMENT OF FM 549 AND +/- 150' SOUTH OF THE EDGE OF PAVEMENT OF SH 276. 595.66 FT. N 7018916.83, E 2607403.98

BM B AN "X" CUT IN A LIGHT POLE BASE +/- 40' WEST OF THE EDGE OF PAVEMENT OF CORPORATE CROSSING AND +/- 0.30 MILES SOUTH OF THE EDGE OF PAVEMENT OF IH 30. 581.56 FT. N 7022945.40, E 2607163.95

C O R P O R A T E C R O S S I N G



CAUTION !!
 EXISTING UTILITIES ARE INDICATED ON THE PLANS FROM AVAILABLE INFORMATION. IT SHALL BE THE RESPONSIBILITY OF THE CONTRACTOR TO VERIFY THE LOCATION OF ALL UTILITIES, TO NOTIFY ALL UTILITY COMPANIES OF THE CONTRACTORS OPERATIONS, TO PROTECT ALL UTILITIES FROM DAMAGE, TO REPAIR ALL UTILITIES DAMAGED DUE TO THE CONTRACTORS OPERATIONS, AND TO NOTIFY THE ENGINEER PROMPTLY OF ALL CONFLICTS OF THE WORK WITH EXISTING UTILITIES.

- NOTES**
- SEE SHEETS P100-P114 FOR DRIVEWAY CONSTRUCTION.
 - SEE SHEETS R101-R106 FOR UTILITY RELOCATIONS AND REMOVALS.
 - SEE SHEETS M101-M102 FOR STRIPING AND SIGNAGE PLANS.
 - SEE SHEETS G101-G103 FOR GRADING PLANS.
 - STREET STATION & OFFSETS FOR INLETS ARE AT THE CENTERLINE OF THE INLET, INSIDE FACE AT THE BACK OF CURB.

**RECORD
 DRAWING
 10/11/2013**
 TO THE BEST OF OUR KNOWLEDGE WIER & ASSOCIATES, INC., HERBY STATES THAT THIS PLAN IS AS-BUILT. THIS INFORMATION PROVIDED IS BASED ON SURVEYING AT THE SITE AND INFORMATION PROVIDED BY THE CONTRACTOR.