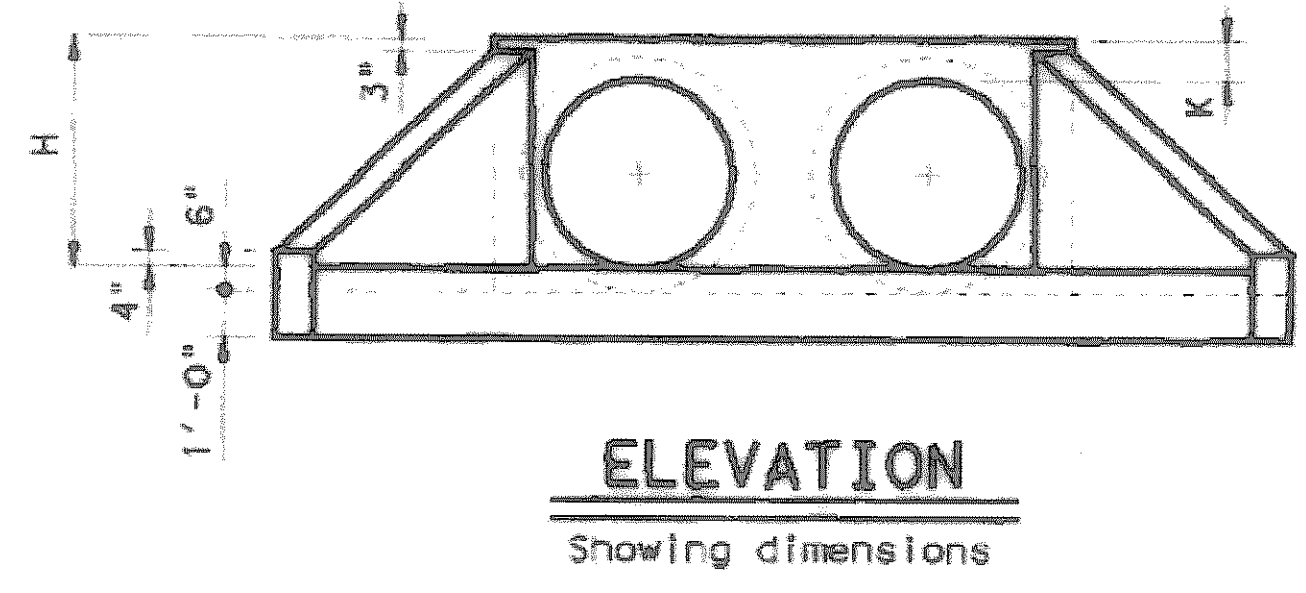


TABLE OF VARIABLE DIMENSIONS AND QUANTITIES FOR ONE HEADWALL ④

SLOPE DIA OF PIPE, D	Values for one Pipe					Values to be added for each add'l Pipe			
	W	X	Y	L	Reinf (Lbs)	Conc (CY) ①	X and W	Reinf (Lbs)	Conc (CY) ①
12"	4'-7 1/2"	2'-6"	2'-10"	3'-3 1/4"	84	0.6	1'-9"	20	0.2
15"	5'-5 3/4"	2'-9 1/2"	3'-4"	3'-10 1/4"	99	0.7	2'-2"	24	0.3
18"	6'-4 1/4"	3'-1"	3'-10"	4'-5"	120	0.9	2'-8"	32	0.3
21"	7'-2 3/4"	3'-4 1/2"	4'-4"	5'-0"	137	1.1	3'-1"	43	0.4
24"	8'-2 1/2"	3'-9 1/2"	4'-10"	5'-7"	158	1.3	3'-7"	50	0.5
27"	9'-1"	4'-1"	5'-4"	6'-2"	173	1.5	3'-11"	56	0.6
30"	9'-11 1/2"	4'-4 1/2"	5'-10"	6'-8 3/4"	197	1.7	4'-4"	65	0.8
33"	10'-10"	4'-8"	6'-4"	7'-3 3/4"	216	2.0	4'-8"	71	0.9
36"	11'-8 1/4"	4'-11 1/2"	6'-10"	7'-10 3/4"	241	2.2	5'-1"	81	1.0
42"	13'-5 1/4"	5'-6 1/2"	7'-10"	9'-0 1/2"	290	2.8	5'-10"	97	1.3
48"	15'-9"	6'-1 1/2"	9'-4"	10'-9 1/4"	350	3.8	6'-7"	117	1.7
54"	17'-5 3/4"	6'-8 1/2"	10'-4"	11'-11 1/4"	415	4.5	7'-6"	151	2.1
60"	19'-2 3/4"	7'-3 1/2"	11'-4"	13'-1"	469	5.3	8'-3"	174	2.5
66"	20'-11 1/2"	7'-10 1/2"	12'-4"	14'-3"	530	6.2	8'-9"	194	2.9
72"	22'-8 1/2"	8'-5 1/2"	13'-4"	15'-4 3/4"	587	7.1	9'-4"	213	3.3
12"	6'-3"	2'-6"	4'-3"	4'-11"	114	0.8	1'-9"	22	0.2
15"	7'-5"	2'-9 1/2"	5'-0"	5'-9 1/4"	133	1.1	2'-2"	28	0.3
18"	8'-6 3/4"	3'-1"	5'-9"	6'-7 3/4"	166	1.3	2'-8"	37	0.5
21"	9'-8 3/4"	3'-4 1/2"	6'-6"	7'-6"	189	1.6	3'-1"	48	0.6
24"	11'-0"	3'-9 1/2"	7'-3"	8'-4 1/2"	221	2.0	3'-7"	58	0.7
27"	12'-2"	4'-1"	8'-0"	9'-2 3/4"	245	2.3	3'-11"	67	0.8
30"	13'-4"	4'-4 1/2"	8'-9"	10'-1 1/4"	287	2.7	4'-4"	77	1.0
33"	14'-5 3/4"	4'-8"	9'-6"	10'-11 3/4"	310	3.1	4'-8"	84	1.2
36"	15'-7 3/4"	4'-11 1/2"	10'-3"	11'-10"	343	3.5	5'-1"	96	1.4
42"	17'-11 1/2"	5'-6 1/2"	11'-9"	13'-6 3/4"	424	4.5	5'-10"	119	1.7
48"	21'-1 3/4"	6'-1 1/2"	14'-0"	16'-2"	527	6.1	6'-7"	146	2.3
54"	23'-5 1/2"	6'-8 1/2"	15'-6"	17'-10 3/4"	618	7.3	7'-6"	186	2.9
60"	25'-9 1/4"	7'-3 1/2"	17'-0"	19'-7 1/2"	707	8.7	8'-3"	219	3.4
66"	28'-1"	7'-10 1/2"	18'-6"	21'-4 1/4"	797	10.1	8'-9"	242	3.9
72"	30'-4 3/4"	8'-5 1/2"	20'-0"	23'-1 1/4"	910	11.7	9'-4"	272	4.4
12"	7'-10 3/4"	2'-6"	5'-8"	6'-6 1/2"	144	1.1	1'-9"	24	0.3
15"	9'-4"	2'-9 1/2"	6'-8"	7'-8 1/2"	177	1.5	2'-2"	32	0.4
18"	10'-9 1/2"	3'-1"	7'-8"	8'-10 1/4"	217	1.9	2'-8"	42	0.5
21"	12'-2 3/4"	3'-4 1/2"	8'-8"	10'-0"	254	2.3	3'-1"	57	0.7
24"	13'-9 1/2"	3'-9 1/2"	9'-8"	11'-2"	295	2.8	3'-7"	67	0.9
27"	15'-3"	4'-1"	10'-8"	12'-3 3/4"	328	3.3	3'-11"	77	1.0
30"	16'-8 1/4"	4'-4 1/2"	11'-8"	13'-5 3/4"	379	3.8	4'-4"	89	1.3
33"	18'-1 3/4"	4'-8"	12'-8"	14'-7 1/2"	417	4.5	4'-8"	101	1.4
36"	19'-7"	4'-11 1/2"	13'-8"	15'-9 1/4"	464	5.1	5'-1"	115	1.7
42"	22'-5 3/4"	5'-6 1/2"	15'-8"	18'-1"	575	6.5	5'-10"	141	2.1
48"	26'-6 1/4"	6'-1 1/2"	18'-8"	21'-6 3/4"	720	8.9	6'-7"	175	2.8
54"	29'-5"	6'-8 1/2"	20'-8"	23'-10 1/4"	863	10.7	7'-6"	226	3.6
60"	32'-3 3/4"	7'-3 1/2"	22'-8"	26'-2"	984	12.7	8'-3"	264	4.3
66"	35'-2 1/2"	7'-10 1/2"	24'-8"	28'-5 3/4"	1126	14.9	8'-9"	300	4.9
72"	38'-1 1/4"	8'-5 1/2"	26'-8"	30'-9 1/2"	1283	17.3	9'-4"	334	5.6
12"	11'-2"	2'-6"	8'-6"	9'-9 3/4"	220	1.9	1'-9"	28	0.4
15"	13'-2 1/4"	2'-9 1/2"	10'-0"	11'-6 1/2"	264	2.5	2'-2"	37	0.5
18"	15'-2 1/2"	3'-1"	11'-6"	13'-3 1/4"	326	3.2	2'-8"	50	0.7
21"	17'-2 3/4"	3'-4 1/2"	13'-0"	15'-0 1/4"	381	3.9	3'-1"	69	0.9
24"	19'-4 1/2"	3'-9 1/2"	14'-6"	16'-9"	447	4.8	3'-7"	80	1.2
27"	21'-4 3/4"	4'-1"	16'-0"	18'-5 3/4"	506	5.7	3'-11"	96	1.4
30"	23'-5 1/4"	4'-4 1/2"	17'-6"	20'-2 1/2"	587	6.7	4'-4"	110	1.7
33"	25'-5 1/2"	4'-8"	19'-0"	21'-11 1/4"	667	7.8	4'-8"	127	2.0
36"	27'-5 3/4"	4'-11 1/2"	20'-6"	23'-8"	727	9.0	5'-1"	144	2.3
42"	31'-6 1/4"	5'-6 1/2"	23'-6"	27'-1 1/2"	914	11.5	5'-10"	179	3.0
48"	37'-3 1/2"	6'-1 1/2"	28'-0"	32'-4"	1181	15.9	6'-7"	231	4.0
54"	41'-4 1/4"	6'-8 1/2"	31'-0"	35'-9 1/2"	1412	19.2	7'-6"	300	5.0
60"	45'-4 3/4"	7'-3 1/2"	34'-0"	39'-3"	1619	22.9	8'-3"	353	6.0



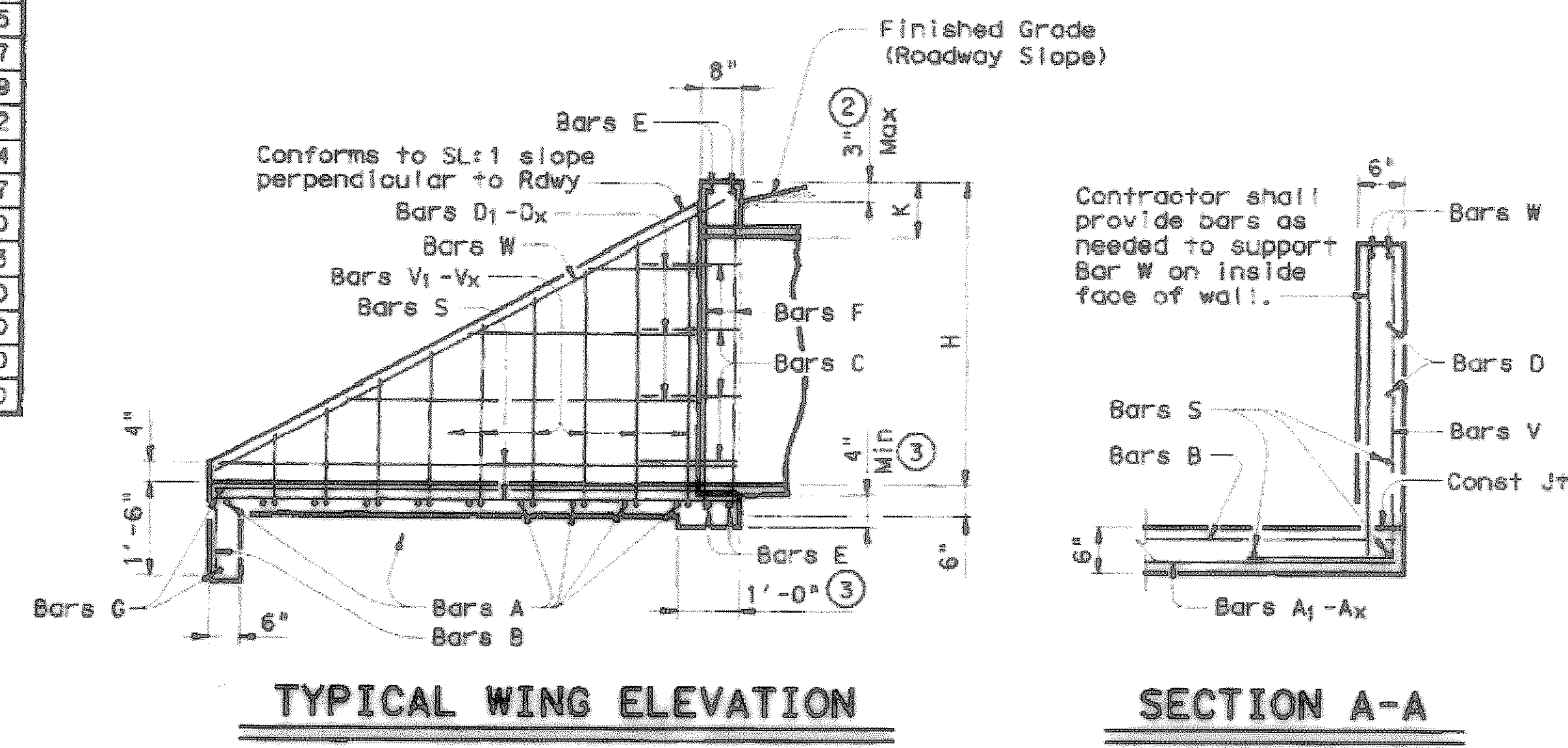
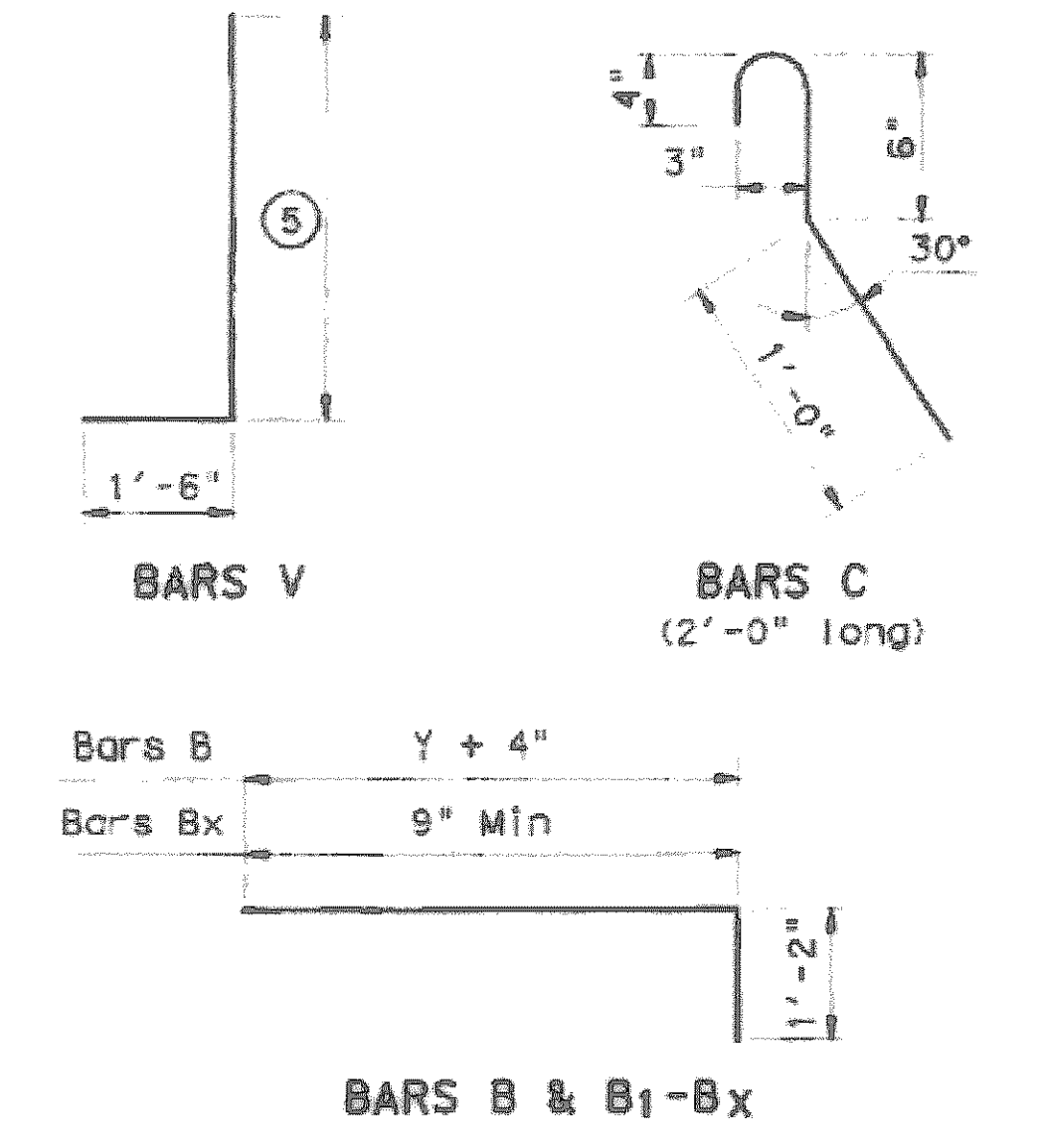
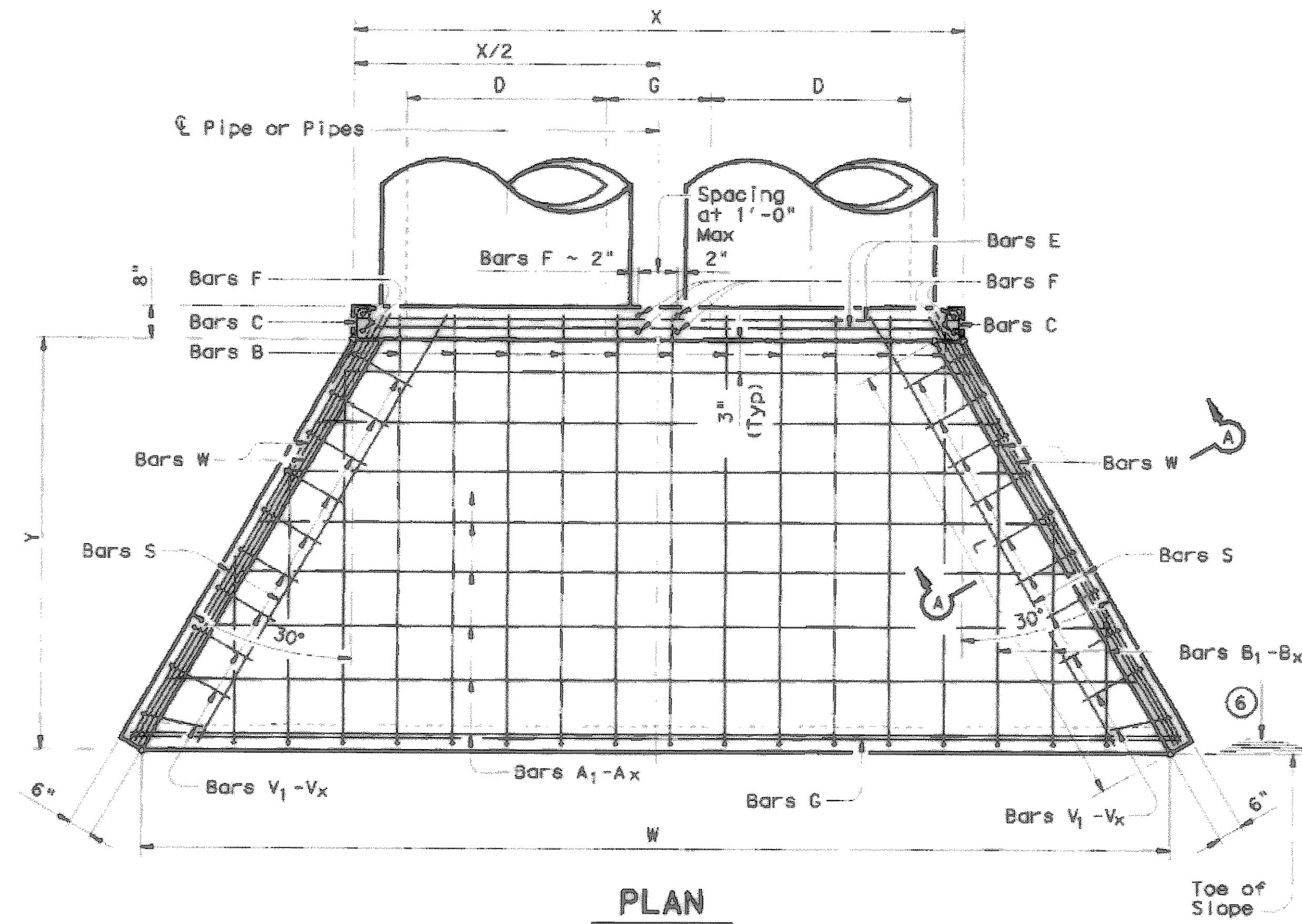
- Quantities shown are for concrete pipe and will increase slightly for metal pipe installations.
- For vehicle safety, curbs shall project no more than 3" above finished grade. Curb heights shall be reduced, if necessary, to meet these requirements. No changes will be made in quantities and no additional compensation will be allowed for this work.
- Provide a 1'-0" footing as shown where required to maintain 4" Min cover for pipes.
- Quantities shown are for one structure end only (one headwall).
- Min Length = $6" + 3" \times \frac{12 \times H - 7}{12 \times L}$
Max Length = $12 \times H - 3" \times \frac{12 \times H - 7}{12 \times L} - 1"$
- Lengths of wings based on SL:1 Slope along this line.

TABLE OF REINFORCING STEEL ④

Bar	Size	Spa	No.
A	# 4	1'-0"	~
B	# 3	1'-6"	~
C	# 4	1'-0"	~
D	# 3	1'-0"	~
E	# 5	~	4
F	# 5	~	~
G	# 3	~	2
S	# 4	~	6
V	# 4	1'-0"	~
W	# 5	~	4

TABLE OF CONSTANT DIMENSIONS

DIA OF PIPE, D	G	K	H
12"	9"	1'-0"	2'-0"
15"	11"	1'-0"	2'-3"
18"	1'-2"	1'-0"	2'-6"
21"	1'-4"	1'-0"	2'-9"
24"	1'-7"	1'-0"	3'-0"
27"	1'-8"	1'-0"	3'-3"
30"	1'-10"	1'-0"	3'-6"
33"	1'-11"	1'-0"	3'-9"
36"	2'-1"	1'-0"	4'-0"
42"	2'-4"	1'-0"	4'-6"
48"	2'-7"	1'-3"	5'-3"
54"	3'-0"	1'-3"	5'-9"
60"	3'-3"	1'-3"	6'-3"
66"	3'-3"	1'-3"	6'-9"
72"	3'-4"	1'-3"	7'-3"



GENERAL NOTES:
Designed according to current AASHTO Standard and Interim Specifications.
Reinforcing steel shall be placed with the center of the outside layer of bars 2" from the surface of the concrete.
All reinforcing steel shall be Grade 60.
All concrete shall be Class "C" and shall have a minimum compressive strength of 3600 psi.
No bridge rails of any type may be mounted directly to these culvert headwalls.

Texas Department of Transportation
Bridges Division

CONCRETE HEADWALLS WITH FLARED WINGS FOR 0° SKEW PIPE CULVERTS

CH-FW-0

FILE: chfw00se.dwg
DATE: December 2005
DISTRICT: FEDERAL AID PROJECT
SHEET: 164

12/12/06 BUL ROCKWALL 2003120 PLAN-SHEET 03120-TDRK-CH-FW-0.DWG SCALE: 1=20