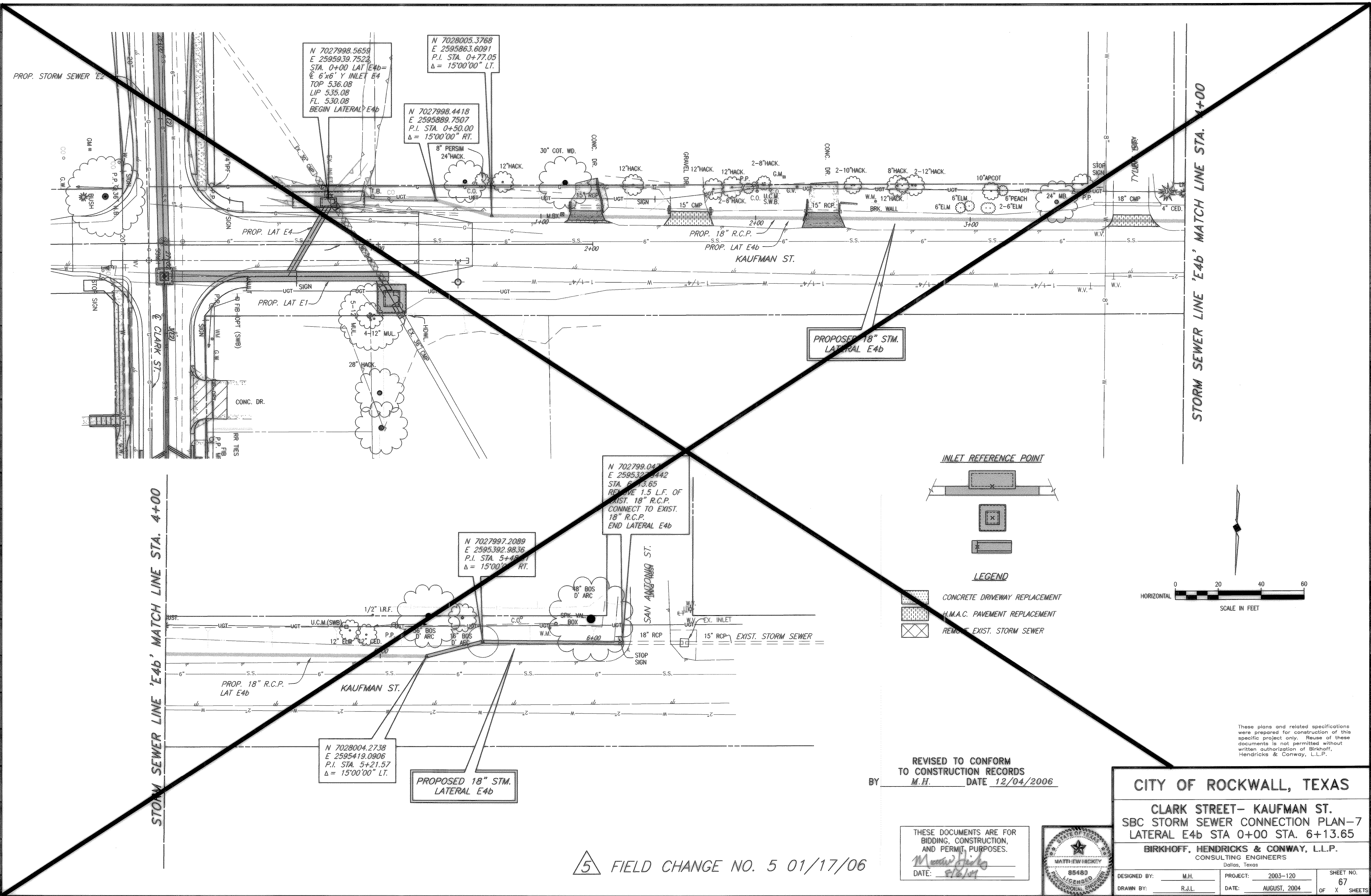


08/23/04 R.J.L. H. ROCKWALL \2003120\PLAN-SHEETS\2003120-STM-P-07.DWG SCALE: 1"=20' XREF: ROCKWALL \2003120\BASE\PROP-BASE



N 7027998.5659
E 2595939.7523
STA. 0+00 LAT E4b=
6'x6' Y INLET E4
TOP 536.08
LIP 535.08
FL. 530.08
BEGIN LATERAL E4b

N 7028005.3768
E 2595863.6091
P.I. STA. 0+77.05
Δ = 15'00"00" LT.

N 7027998.4418
E 2595889.7507
P.I. STA. 0+50.00
Δ = 15'00"00" RT.

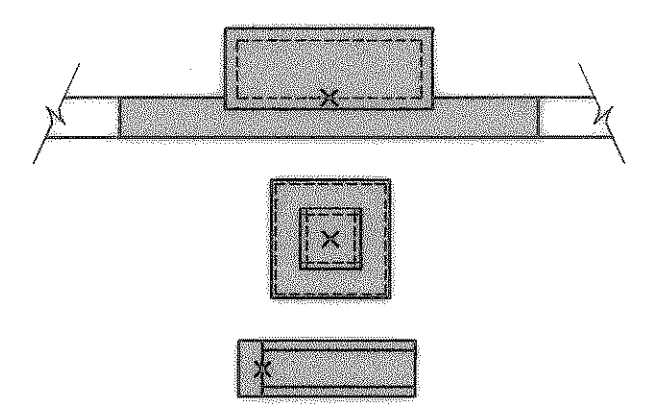
N 702799.047
E 2595327.3442
STA. 6+13.65
REMOVE 1.5 L.F. OF
EXIST. 18" R.C.P.
CONNECT TO EXIST.
18" R.C.P.
END LATERAL E4b

N 7027997.2089
E 2595392.9836
P.I. STA. 5+48.00
Δ = 15'00"00" RT.

N 7028004.2738
E 2595419.0906
P.I. STA. 5+21.57
Δ = 15'00"00" LT.

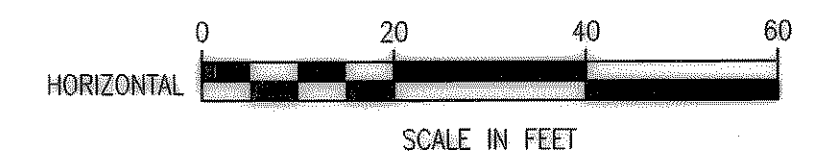
PROPOSED 18" STM.
LATERAL E4b

INLET REFERENCE POINT



LEGEND

- CONCRETE DRIVEWAY REPLACEMENT
- H.M.A.C. PAVEMENT REPLACEMENT
- REMOVE EXIST. STORM SEWER



These plans and related specifications were prepared for construction of this specific project only. Reuse of these documents is not permitted without written authorization of Birkhoff, Hendricks & Conway, L.L.P.

REVISED TO CONFORM TO CONSTRUCTION RECORDS
BY M.H. DATE 12/04/2006

THESE DOCUMENTS ARE FOR BIDDING, CONSTRUCTION, AND PERMIT PURPOSES.
DATE: 8/8/04



CITY OF ROCKWALL, TEXAS

CLARK STREET- KAUFMAN ST.
SBC STORM SEWER CONNECTION PLAN-7
LATERAL E4b STA 0+00 STA. 6+13.65

BIRKHOFF, HENDRICKS & CONWAY, L.L.P.
CONSULTING ENGINEERS
Dallas, Texas

DESIGNED BY: M.H.	PROJECT: 2003-120	SHEET NO. 67
DRAWN BY: R.J.L.	DATE: AUGUST, 2004	OF X SHEETS

5 FIELD CHANGE NO. 5 01/17/06