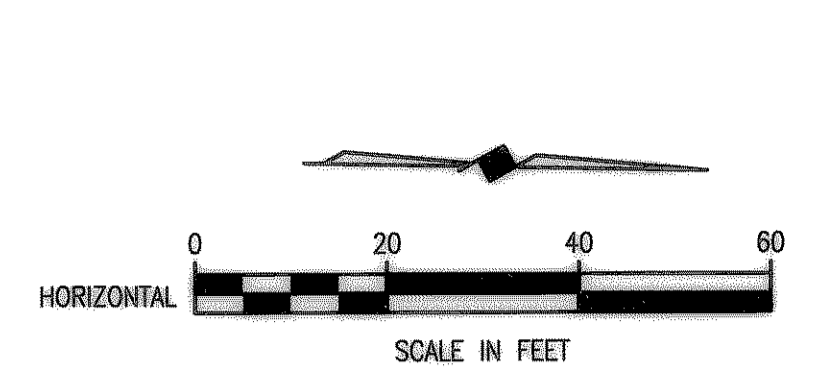
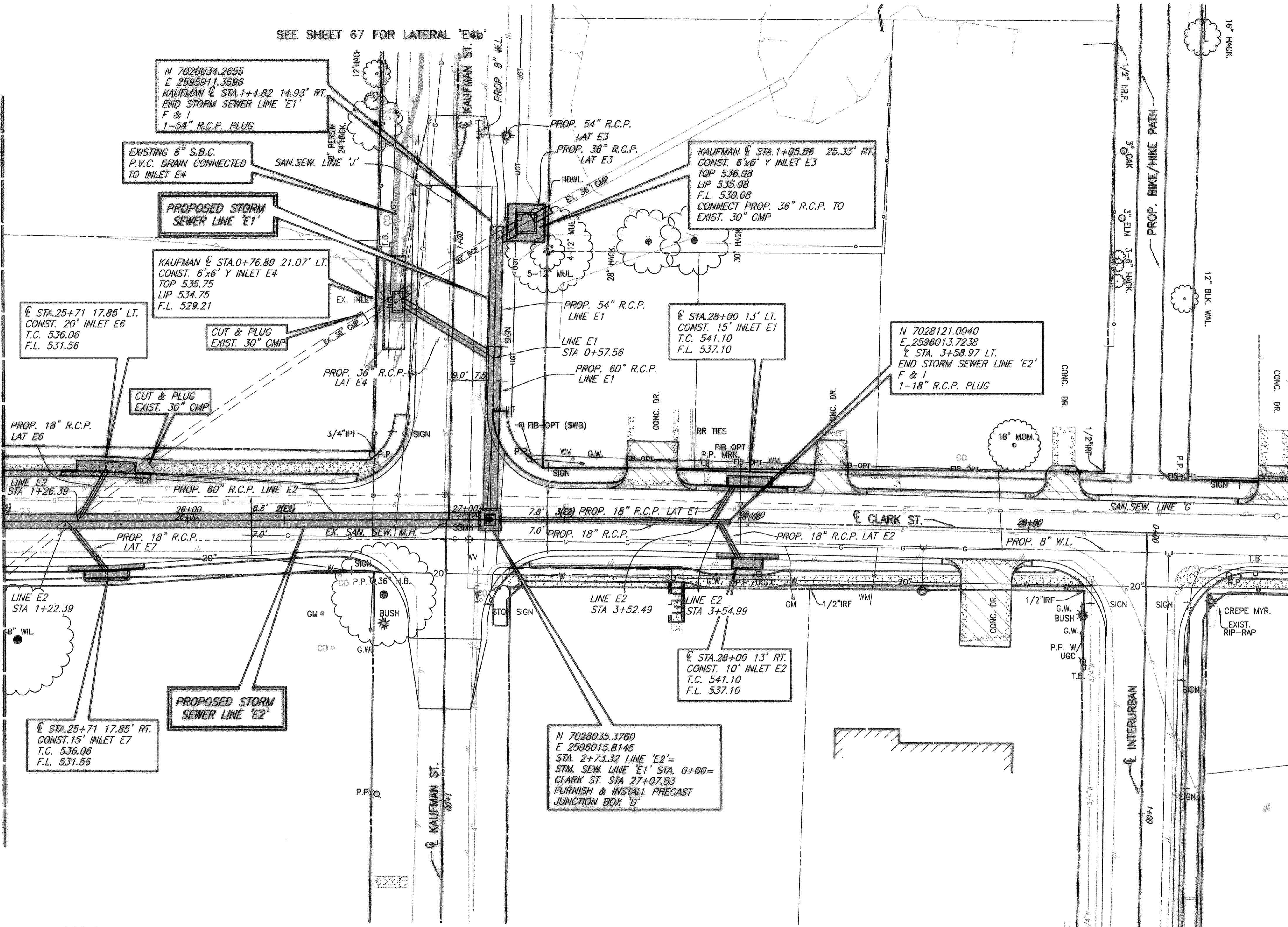


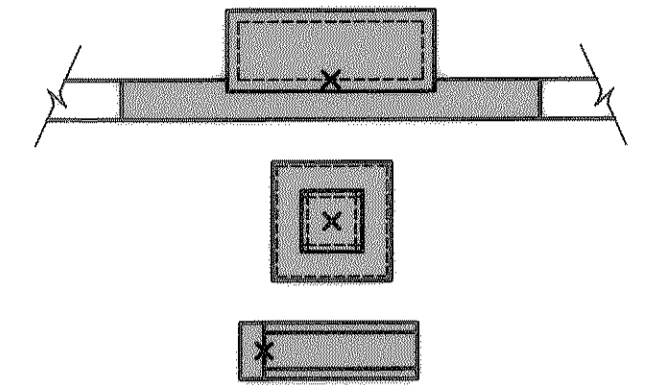
H:\ROCKWALL\2003120\PLAN-SHEETS\2003120-STM-P-06.DWG SCALE: 1=20 XREF: ROCKWALL\2003120\BASE\PROP-BASE

STORM SEWER LINE 'E2' MATCH LINE STA. 1+00  
CLARK STREET STA. 25+34.51

SEE SHEET 67 FOR LATERAL 'E4b'



INLET REFERENCE POINT



- LEGEND**
- PROPOSED STORM SEWER OR INLET
  - PROPOSED TURF REINFORCED MAT W/HYDROMULCH SEED
  - REMOVE EXIST. STORM SEWER
  - PROPOSED STORM SEWER STATIONING

T.B.M. 2176  
SQ. CUT ON WEST HEADWALL  
OF CLARK ST. & NORTH OF ST.  
MARY ST.  
N:7025946.3986  
E:2596088.3176  
EL=533.99

T.B.M. 2884  
SQ. CUT IN INLET EAST OF CLARK  
ST. & SOUTH OF BOYDSTUN ST.  
N:7025217.8375  
E:2596128.8878  
EL=537.38

These plans and related specifications were prepared for construction of this specific project only. Reuse of these documents is not permitted without written authorization of Birkhoff, Hendricks & Conway, L.L.P.

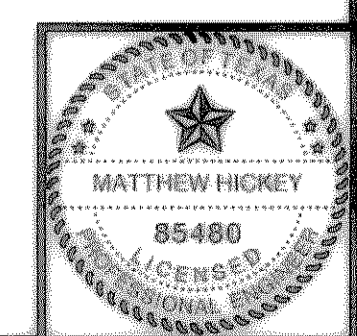
CITY OF ROCKWALL, TEXAS

CLARK STREET  
STORM SEWER PLAN-6  
LINES E1 & E2

BIRKHOFF, HENDRICKS & CONWAY, L.L.P.  
CONSULTING ENGINEERS  
Dallas, Texas

REVISED TO CONFORM  
TO CONSTRUCTION RECORDS  
BY M.H. DATE 12/04/2006

THESE DOCUMENTS ARE FOR  
BIDDING, CONSTRUCTION,  
AND PERMIT PURPOSES.  
DATE: 8/16/04



DESIGNED BY: M.H.	PROJECT: 2003-120	SHEET NO. 66
DRAWN BY: B.H.C.	DATE: AUGUST, 2004	OF X SHEETS