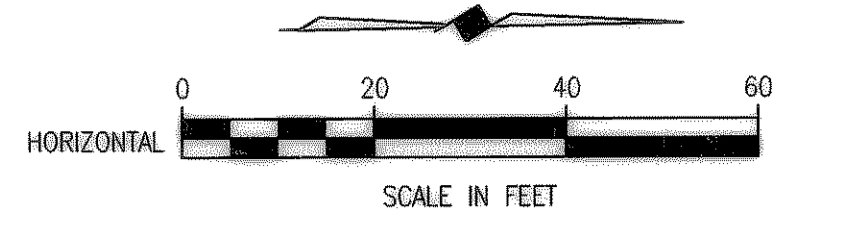
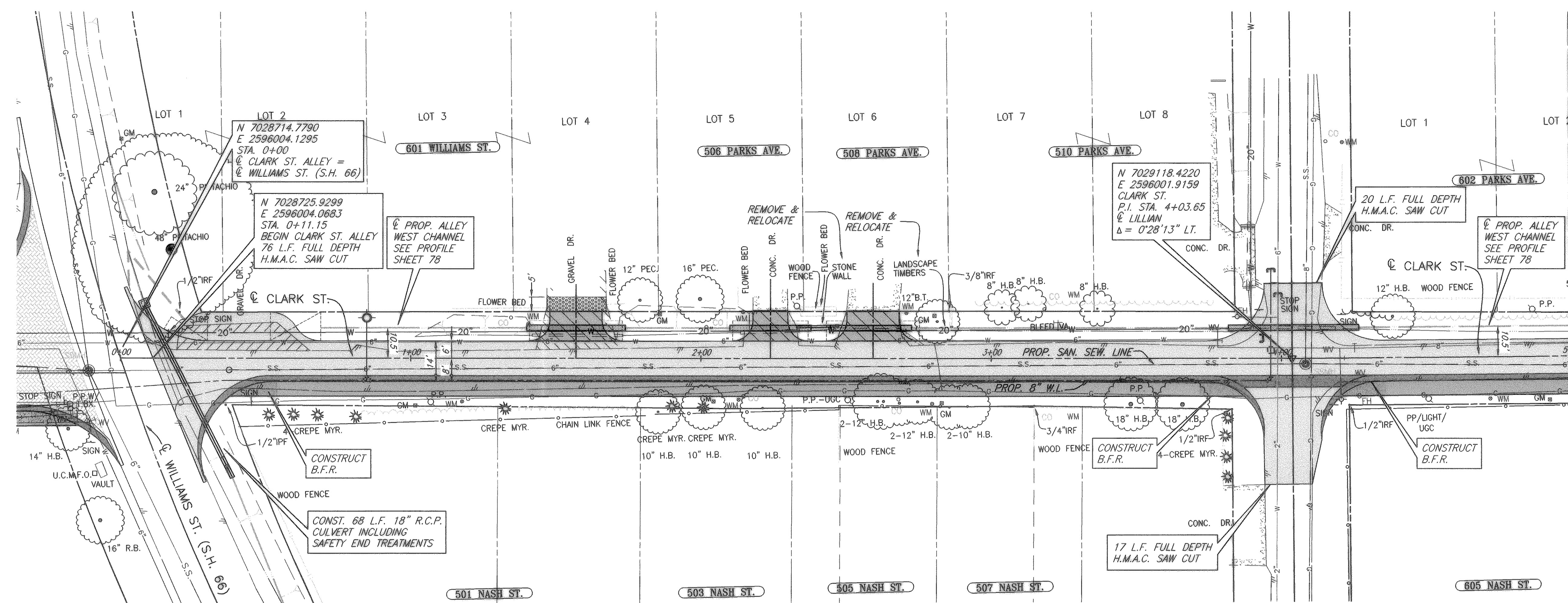


07/05/05 R.L. H:\ROCKWALL\2003120\PLAN-SHEETS\2003120-APP1.DWG SCALE: 1"=20' BLOCKS: ROCKWALL\2003120\X.X XREF: ROCKWALL\2003120\X.X

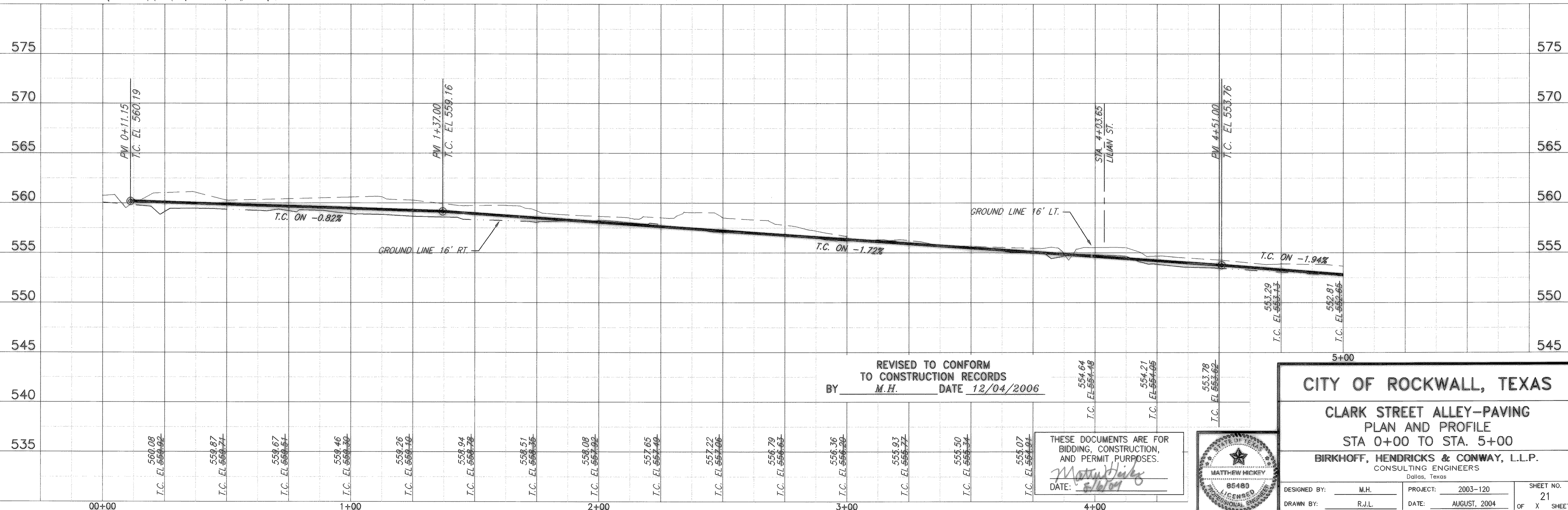


- LEGEND**
- CONSTRUCT H.M.A.C. PAVEMENT
 - CONSTRUCT REINF. CONC. CURB & GUTTER
 - CONSTRUCT REINF. CONC. SIDEWALK
 - CONSTRUCT BRICK PAVERS
 - CONSTRUCT REINF. CONC. DRIVEWAY
 - CONSTRUCT GRAVEL DRIVEWAY
 - B.F.R. BARRIER FREE RAMP
 - PROP. 23"x14" REINF. CONC. ARCH PIPE

T.B.M. CS
 SQ. CUT ON TOWER BASE SOUTH
 WEST CORNER OF CLARK ST. &
 WASHINGTON ST.
 N:7027488.5763
 E:2596011.4576
 EL=545.17

 T.B.M. 2176
 SQ. CUT ON WEST HEADWALL
 OF CLARK ST. & NORTH OF ST.
 MARY ST.
 N:7025946.3986
 E:2596088.3176
 EL=533.99

These plans and related specifications
 were prepared for construction of this
 specific project only. Reuse of these
 documents is not permitted without
 written authorization of Birkhoff,
 Hendricks & Conway, L.L.P.



CITY OF ROCKWALL, TEXAS
CLARK STREET ALLEY-PAVING
PLAN AND PROFILE
STA 0+00 TO STA. 5+00
BIRKHOFF, HENDRICKS & CONWAY, L.L.P.
 CONSULTING ENGINEERS
 Dallas, Texas

DESIGNED BY: M.H.	PROJECT: 2003-120	SHEET NO. 21
DRAWN BY: R.J.L.	DATE: AUGUST, 2004	OF X SHEETS