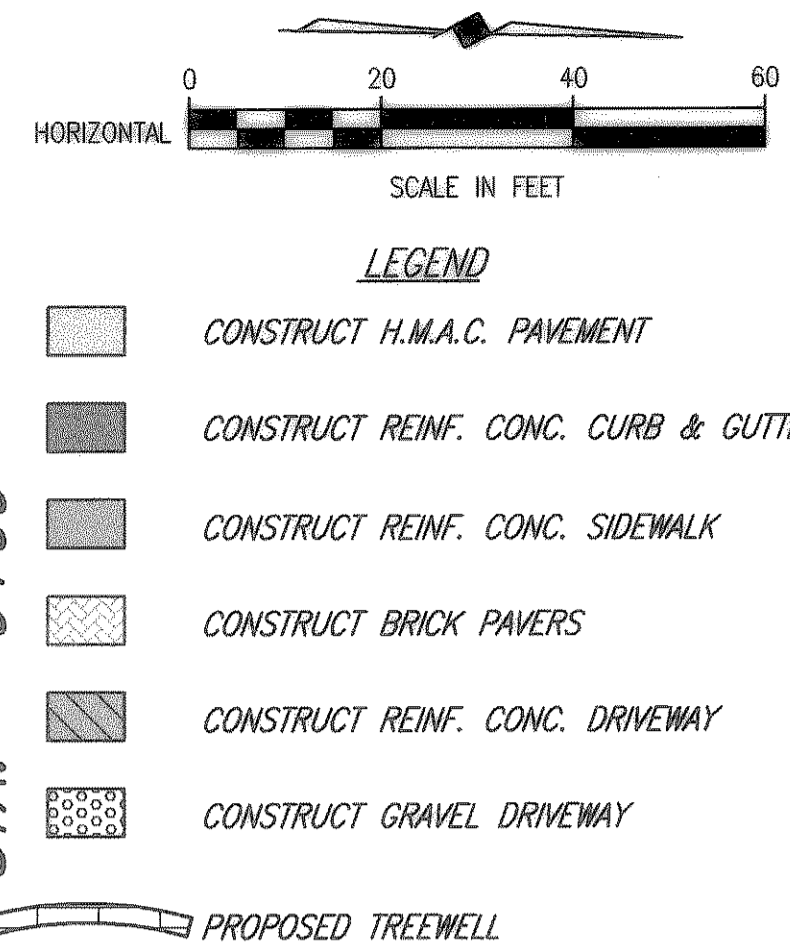
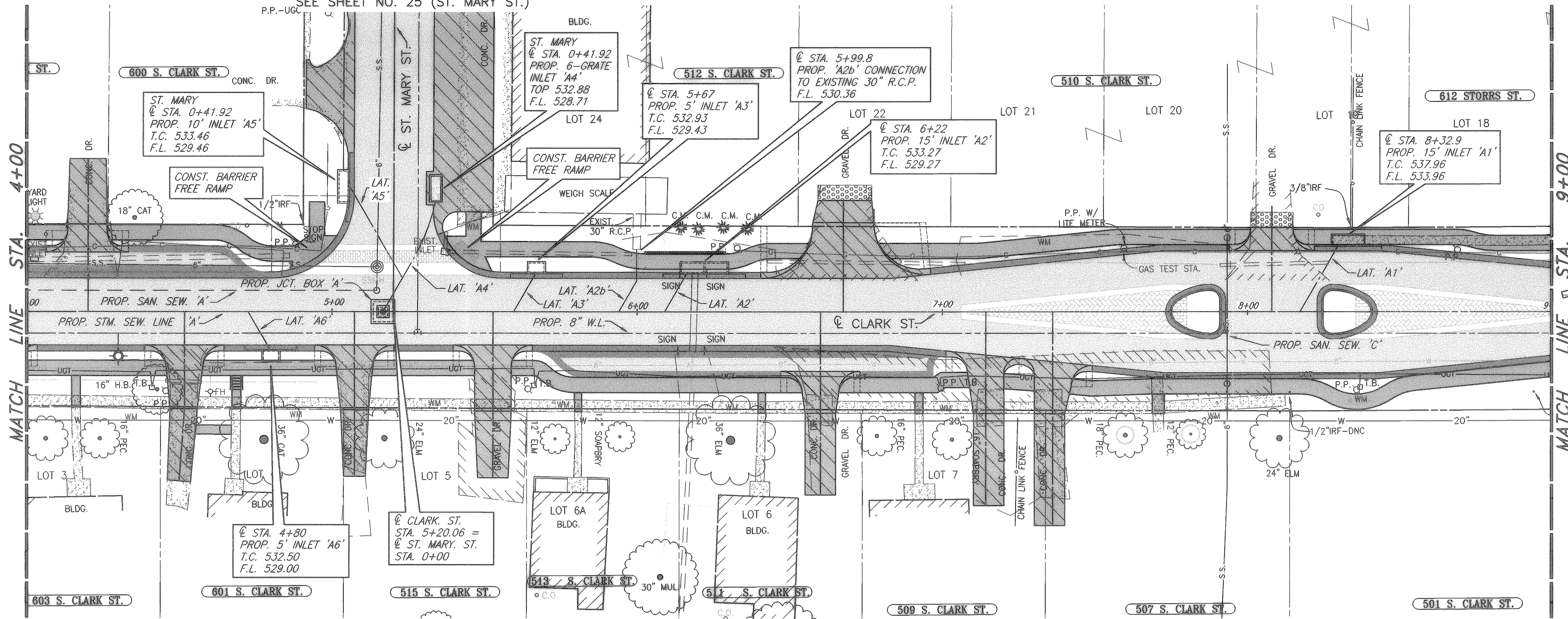
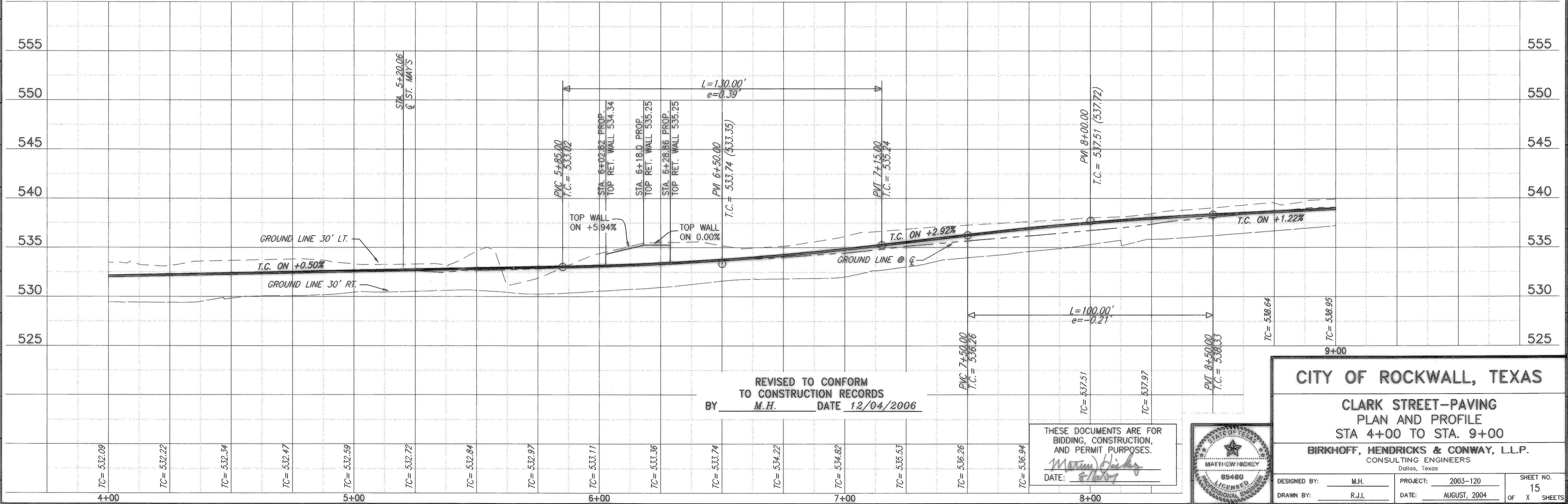


H:\ROCKWALL\2003\120\PLAN-SHEETS\2003\120-PP2.DWG SCALE: 1"=20' XREF: ROCKWALL\2003\120\BASE\PROFILES\CLARK-BOY-TO-66 XREF: ROCKWALL\2003\120\BASE\PROP-BASE

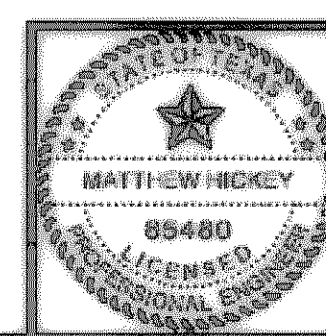
SEE SHEET NO. 25 (ST. MARY ST.)



These plans and related specifications were prepared for construction of this specific project only. Reuse of these documents is not permitted without written authorization of Birkhoff, Hendricks & Conway, L.L.P.



THESE DOCUMENTS ARE FOR BIDDING, CONSTRUCTION, AND PERMIT PURPOSES.  
 DATE: 8/1/04



**CITY OF ROCKWALL, TEXAS**

**CLARK STREET-PAVING  
 PLAN AND PROFILE  
 STA 4+00 TO STA. 9+00**

**BIRKHOFF, HENDRICKS & CONWAY, L.L.P.**  
 CONSULTING ENGINEERS  
 Dallas, Texas

DESIGNED BY: M.H. PROJECT: 2003-120 SHEET NO. 15  
 DRAWN BY: R.J.L. DATE: AUGUST, 2004 OF X SHEETS