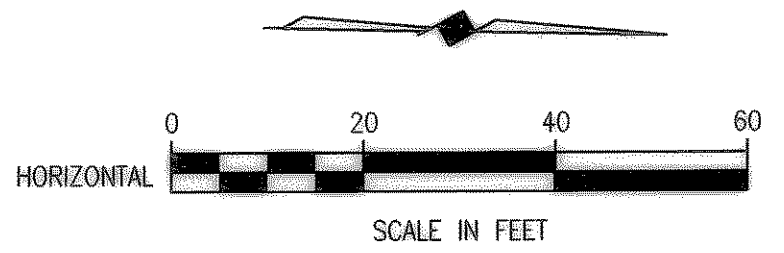
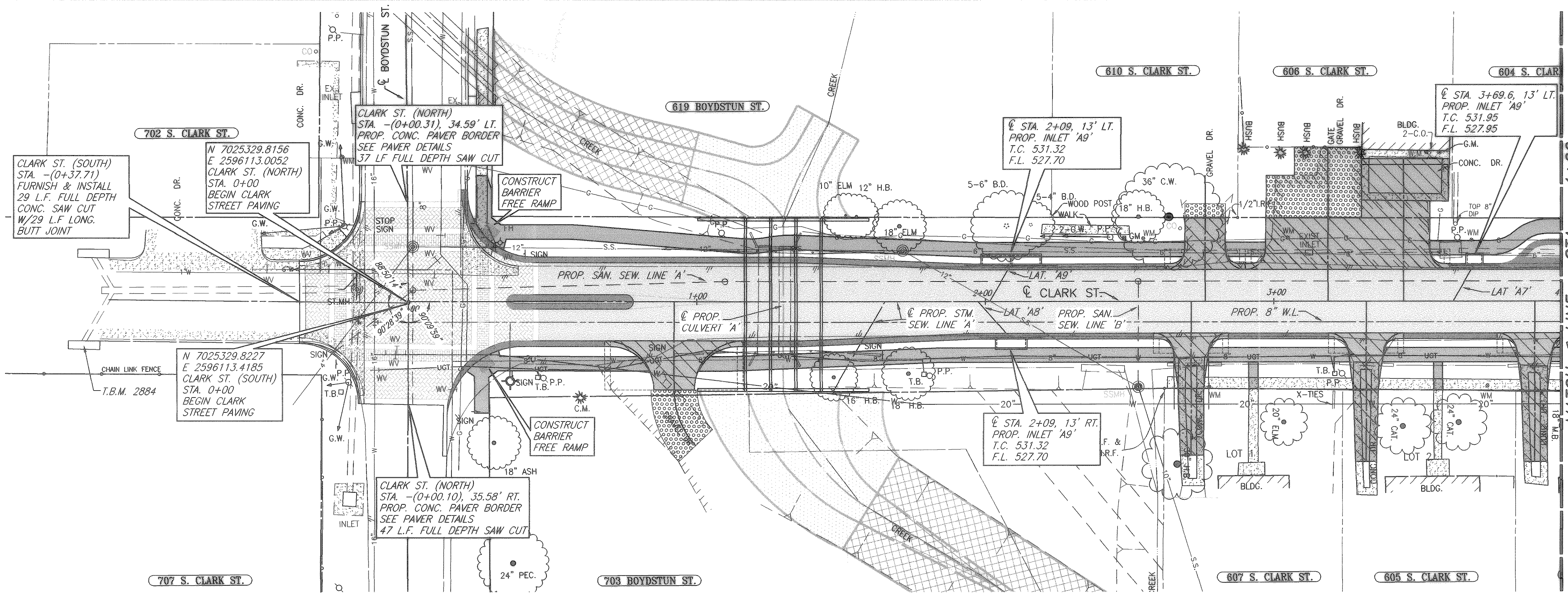


H:\ROCKWALL\2003\120\PLAN-SHEETS\2003120-PPI.DWG SCALE: 1"=20' XREF: ROCKWALL\2003\120\BASE\PROFILES\CLARK-BOY-TO-66 XREF: ROCKWALL\2003\120\BASE\PROF-BASE

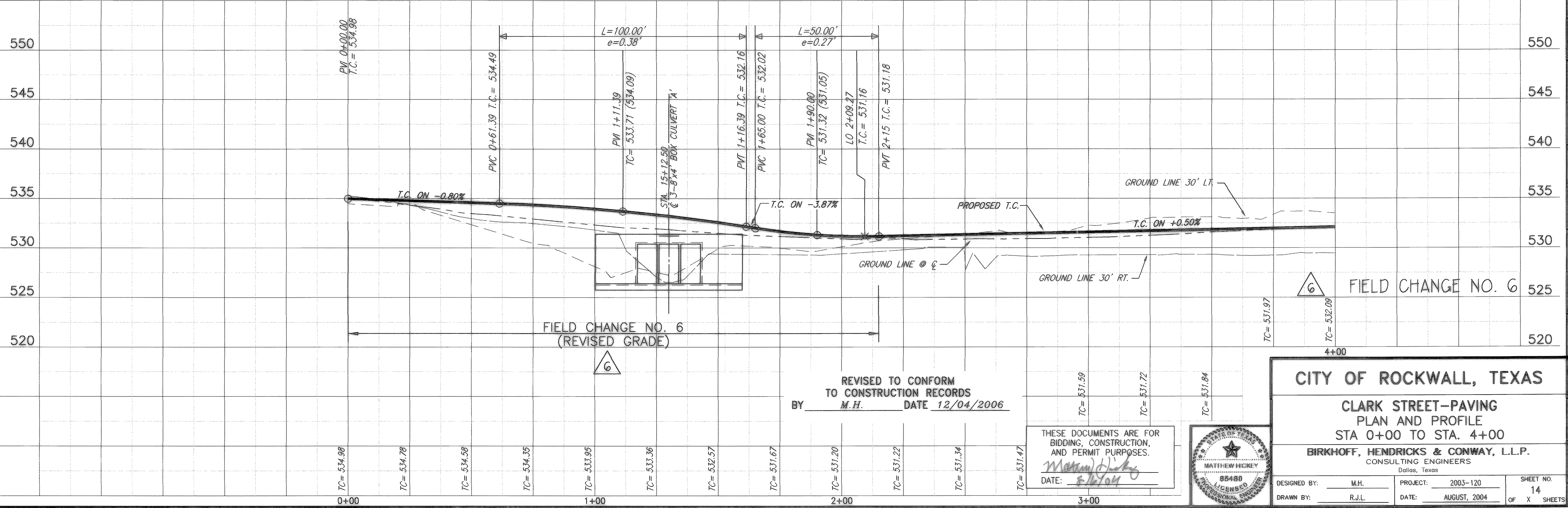


- LEGEND**
- CONSTRUCT H.M.A.C. PAVEMENT
  - CONSTRUCT REINF. CONC. CURB & GUTTER
  - CONSTRUCT REINF. CONC. SIDEWALK
  - CONSTRUCT BRICK PAVERS
  - CONSTRUCT REINF. CONC. DRIVEWAY
  - CONSTRUCT GRAVEL DRIVEWAY
  - PROPOSED TREEWELL

**NOTE:**  
REFER TO COORDINATE/DIMENSION SHEETS FOR CLARK ST. GEOMETRIC LAYOUT OF PROPOSED ROADWAY.

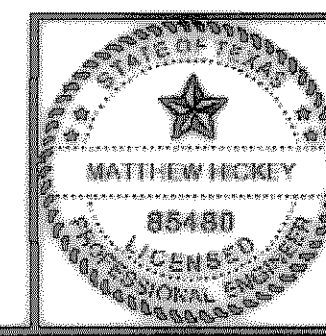
T.B.M. 2884  
SQ. CUT IN INLET EAST OF CLARK ST. & SOUTH OF BOYDSTUN ST.  
N:7025217.8375  
E:2596128.8878  
EL=537.38

These plans and related specifications were prepared for construction of this specific project only. Reuse of these documents is not permitted without written authorization of Birkhoff, Hendricks & Conway, L.L.P.



REVISOR: M.H.  
DATE: 12/04/2006

THESE DOCUMENTS ARE FOR BIDDING, CONSTRUCTION, AND PERMIT PURPOSES.  
*Matthew Hickey*  
DATE: 8/2/04



**CITY OF ROCKWALL, TEXAS**

**CLARK STREET-PAVING  
PLAN AND PROFILE  
STA 0+00 TO STA. 4+00**

**BIRKHOFF, HENDRICKS & CONWAY, L.L.P.**  
CONSULTING ENGINEERS  
Dallas, Texas

DESIGNED BY: M.H. PROJECT: 2003-120 SHEET NO. 14  
DRAWN BY: R.J.L. DATE: AUGUST, 2004 OF X SHEETS