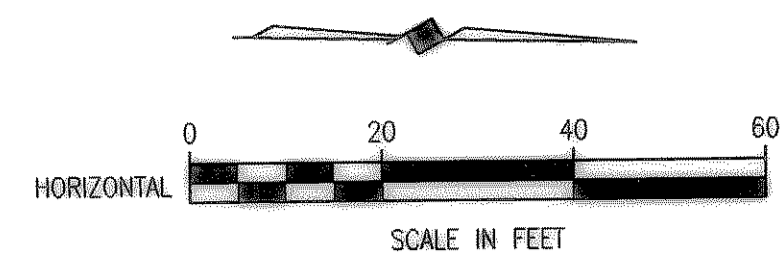
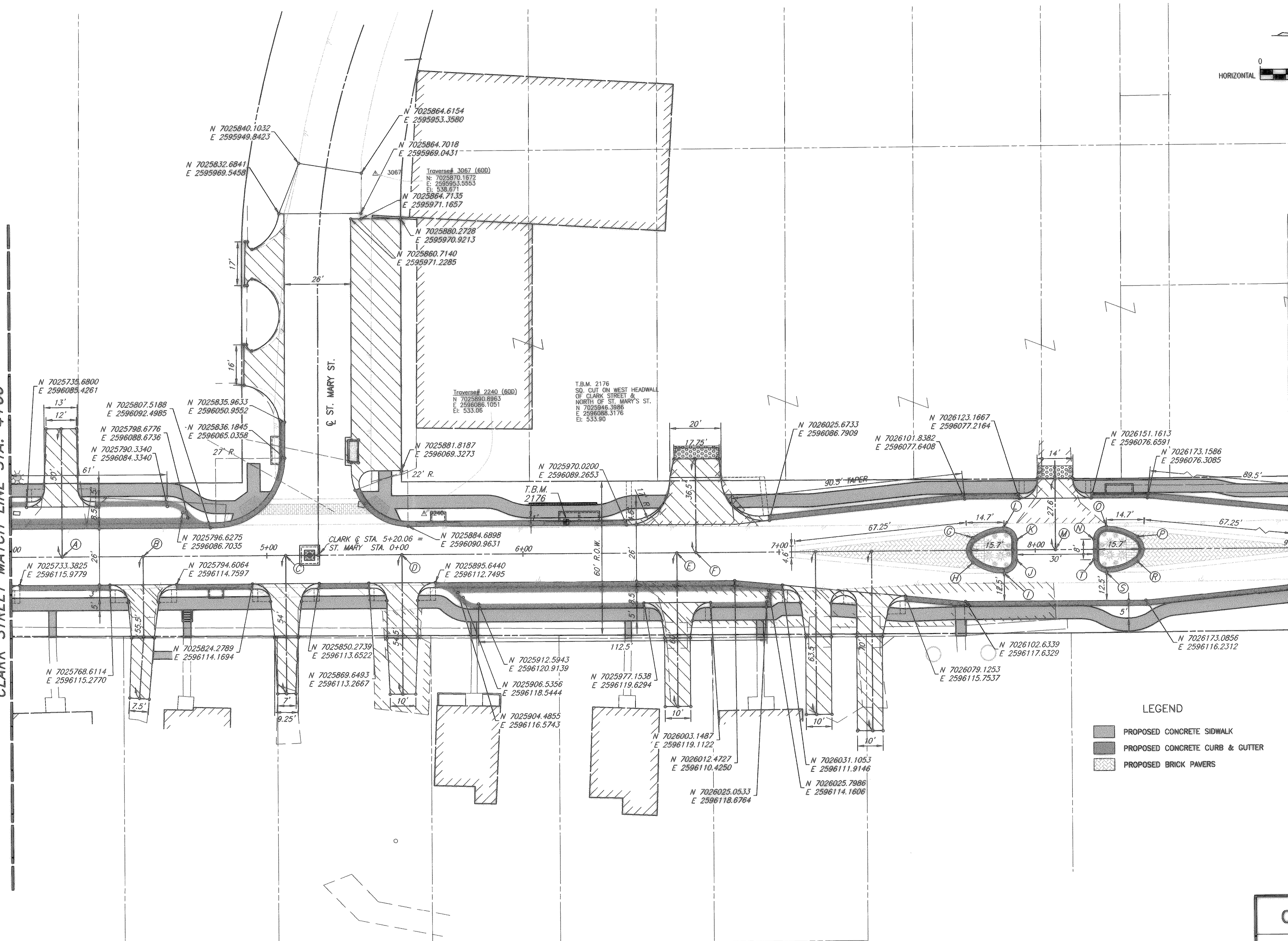


H:\ROCKWALL\2003\120\PLAN-SHEETS\2003120-COORD-02.DWG SCALE: 1"=20' XREF: ROCKWALL\2003\120\BASE\PROP-BASE



CLARK STREET MATCH LINE STA. 4+00

CLARK STREET MATCH LINE STA. 9+00



POINT	COORDINATE N, E
A	N 7025749.8038, E 2596104.6490
B	N 7025781.3901, E 2596104.0205
C	N 7025837.0576, E 2596102.9129
D	N 7025882.4280, E 2596102.0102
E	N 7025989.7634, E 2596099.8747
F	N 7025997.2334, E 2596099.7260
G	N 7026105.1493, E 2596092.6516
H	N 7026105.3452, E 2596102.5023
I	N 7026117.6449, E 2596106.3321
J	N 7026122.5445, E 2596101.2336
K	N 7026122.3853, E 2596093.2352
L	N 7026117.2869, E 2596088.3356
M	N 7026137.5618, E 2596096.9340
N	N 7026152.3794, E 2596092.6384
O	N 7026157.2773, E 2596087.5400
P	N 7026169.5786, E 2596091.3697
Q	N 7026169.7746, E 2596101.2204
S	N 7026157.6354, E 2596105.5364
T	N 7026152.5385, E 2596100.6368

**LEGEND**

- PROPOSED CONCRETE SIDEWALK
- PROPOSED CONCRETE CURB & GUTTER
- PROPOSED BRICK PAVERS

T.B.M. CS  
SQ. CUT ON TOWER BASE SOUTH  
WEST CORNER OF CLARK ST. &  
WASHINGTON ST.  
N: 7027488.5763  
E: 2596011.4576  
EL=545.17

T.B.M. 2176  
SQ. CUT ON WEST HEADWALL  
OF CLARK ST. & NORTH OF ST.  
MARY ST.  
N: 7025946.3986  
E: 2596088.3176  
EL=533.99

T.B.M. 2884  
SQ. CUT IN INLET EAST OF CLARK  
ST. & SOUTH OF BOYDSTUN ST.  
N: 7025217.8375  
E: 2596128.8878  
EL=537.38

These plans and related specifications were prepared for construction of this specific project only. Reuse of these documents is not permitted without written authorization of Birkhoff, Hendricks & Conway, L.L.P.

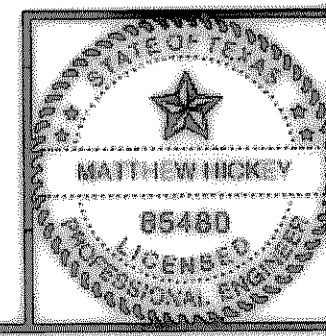
**CITY OF ROCKWALL, TEXAS**

**CLARK STREET  
COORDINATE PLAN-2  
STA 4+00 TO STA. 9+00**

**BIRKHOFF, HENDRICKS & CONWAY, L.L.P.**  
CONSULTING ENGINEERS  
Dallas, Texas

REVISED TO CONFORM  
TO CONSTRUCTION RECORDS  
BY M.H. DATE 12/04/2006

THESE DOCUMENTS ARE FOR  
BIDDING, CONSTRUCTION,  
AND PERMIT PURPOSES.  
DATE: 8/1/07



DESIGNED BY:	M.H.	PROJECT:	2003-120	SHEET NO.	5
DRAWN BY:	B.H.C.	DATE:	AUGUST, 2004	OF	X SHEETS