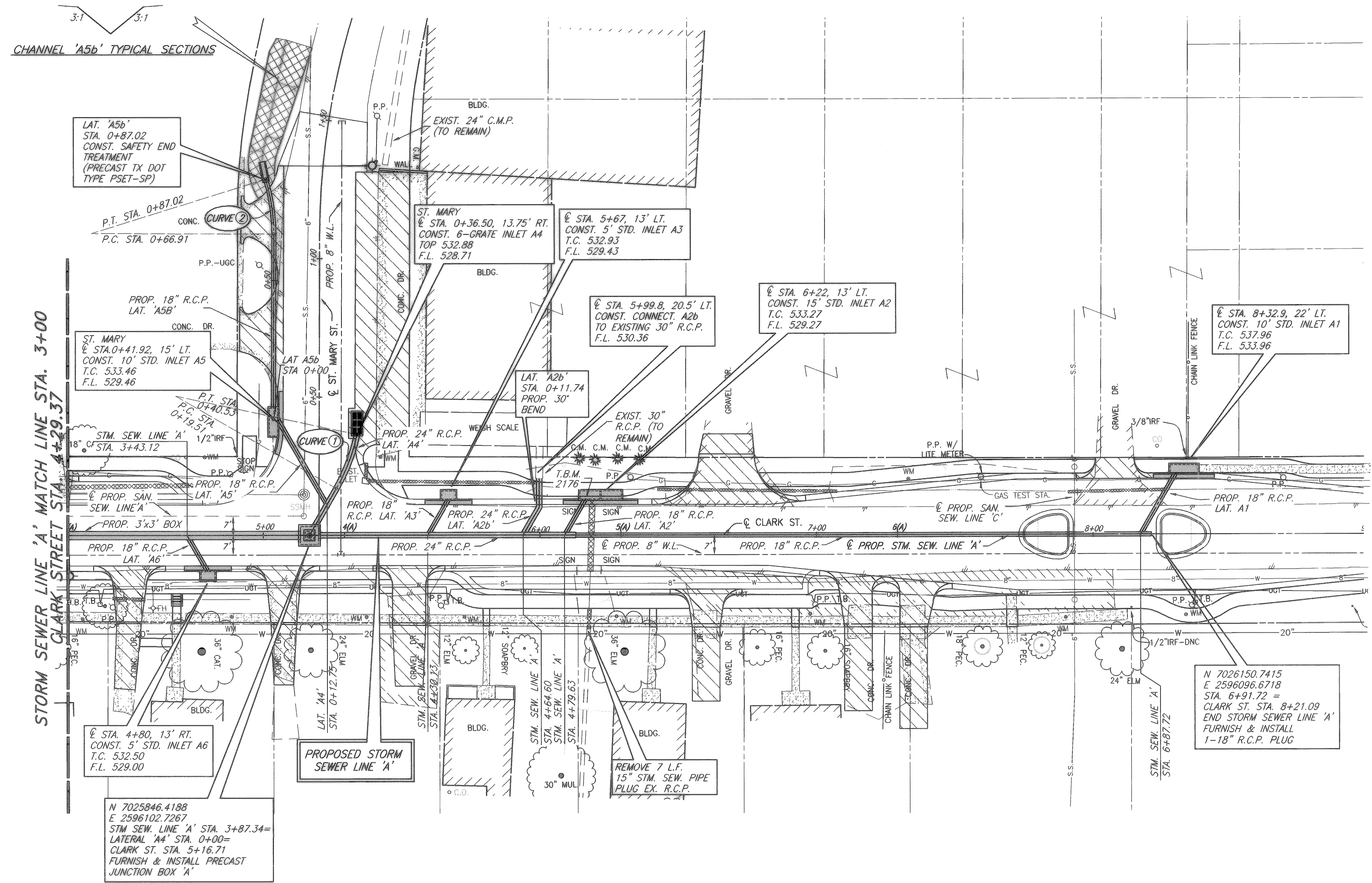
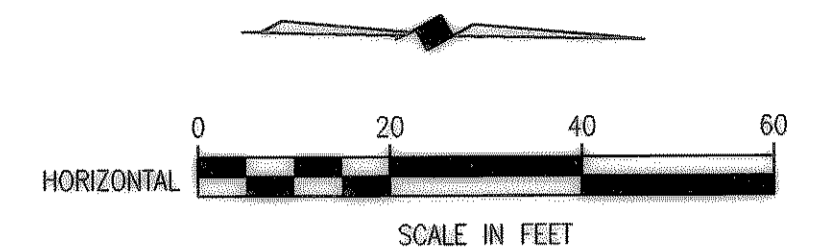


08/03/04 LBS H:\ROCKWALL\2003\120\PLAN-SHEETS\2003\120\BASE\PROP-BASE XREF: ROCKWALL\2003\120\BASE\PROP-BASE SCALE: 1"=20' DATE: 12/04/2006



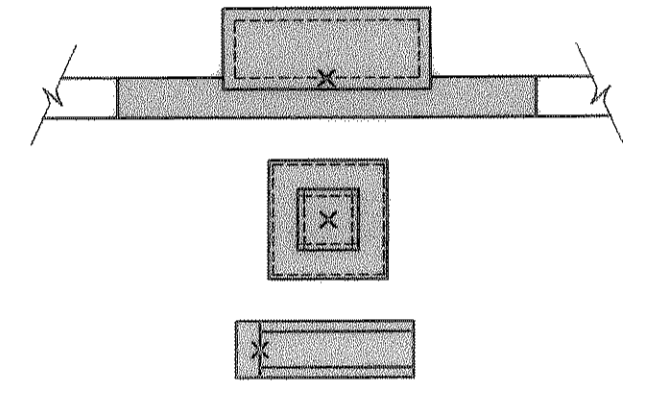
CHANNEL 'A5b' TYPICAL SECTIONS



LEGEND

- PROPOSED STORM SEWER OR INLET
- PROPOSED TURF REINFORCED MAT W/HYDROMULCH SEED
- REMOVE EXIST. STORM SEWER
- PROPOSED STORM SEWER STATIONING

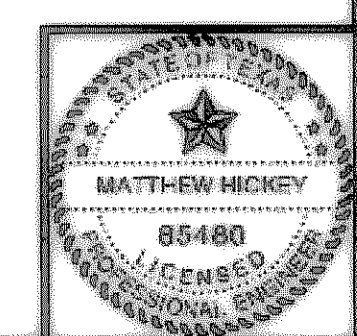
INLET REFERENCE POINT



LAT. 'A4' CURVE DATA	LAT. 'A5b' CURVE DATA
CURVE ①	CURVE ②
P.C. STA. 0+19.51	P.C. STA. 0+66.91
N 7025855.8363	N 7025831.5702
E 2596085.6389	E 2595994.1320
Δ = 17°58'30"	Δ = 17°27'42"
R = 67.00'	R = 66.00'
T = 10.60'	T = 10.14'
L = 21.02'	L = 20.11'
C.B. = N 70°07'38" W	C.B. = S 80°22'9" W
C.D. = 20.93'	C.D. = 20.04'
P.T. STA. 0+40.53	P.T. STA. 0+87.02
N 7025862.9522	N 7025828.2181
E 2596065.9520	E 2595974.3777

REVISED TO CONFORM TO CONSTRUCTION RECORDS
 BY M.H. DATE 12/04/2006

THESE DOCUMENTS ARE FOR BIDDING, CONSTRUCTION, AND PERMIT PURPOSES.
Matthew Hickey
 DATE: 8/28/04



CITY OF ROCKWALL, TEXAS

**CLARK STREET
 STORM SEWER PLAN-2
 LINE 'A' - STA 3+00 TO STA. 6+91.72**

BIRKHOFF, HENDRICKS & CONWAY, L.L.P.
 CONSULTING ENGINEERS
 Dallas, Texas

DESIGNED BY: M.H.	PROJECT: 2003-120	SHEET NO. 61
DRAWN BY: B.H.C.	DATE: AUGUST, 2004	OF X SHEETS

T.B.M. 2176
 SQ. CUT ON WEST HEADWALL OF CLARK ST. & NORTH OF ST. MARY ST.
 N: 7025946.3986
 E: 2596088.3176
 EL = 533.99

T.B.M. 2884
 SQ. CUT IN INLET EAST OF CLARK ST. & SOUTH OF BOYDSTUN ST.
 N: 7025217.8375
 E: 2596128.8878
 EL = 537.38

These plans and related specifications were prepared for construction of this specific project only. Reuse of these documents is not permitted without written authorization of Birkhoff, Hendricks & Conway, L.L.P.