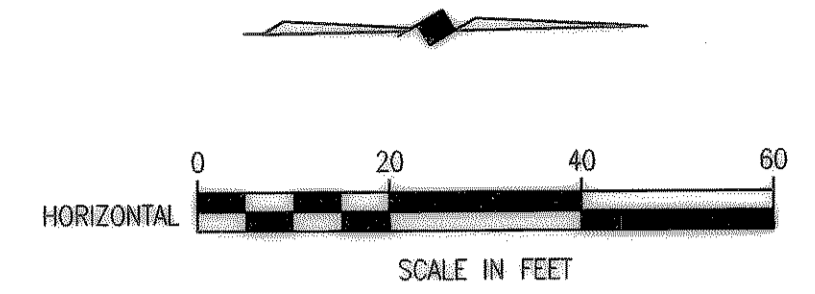
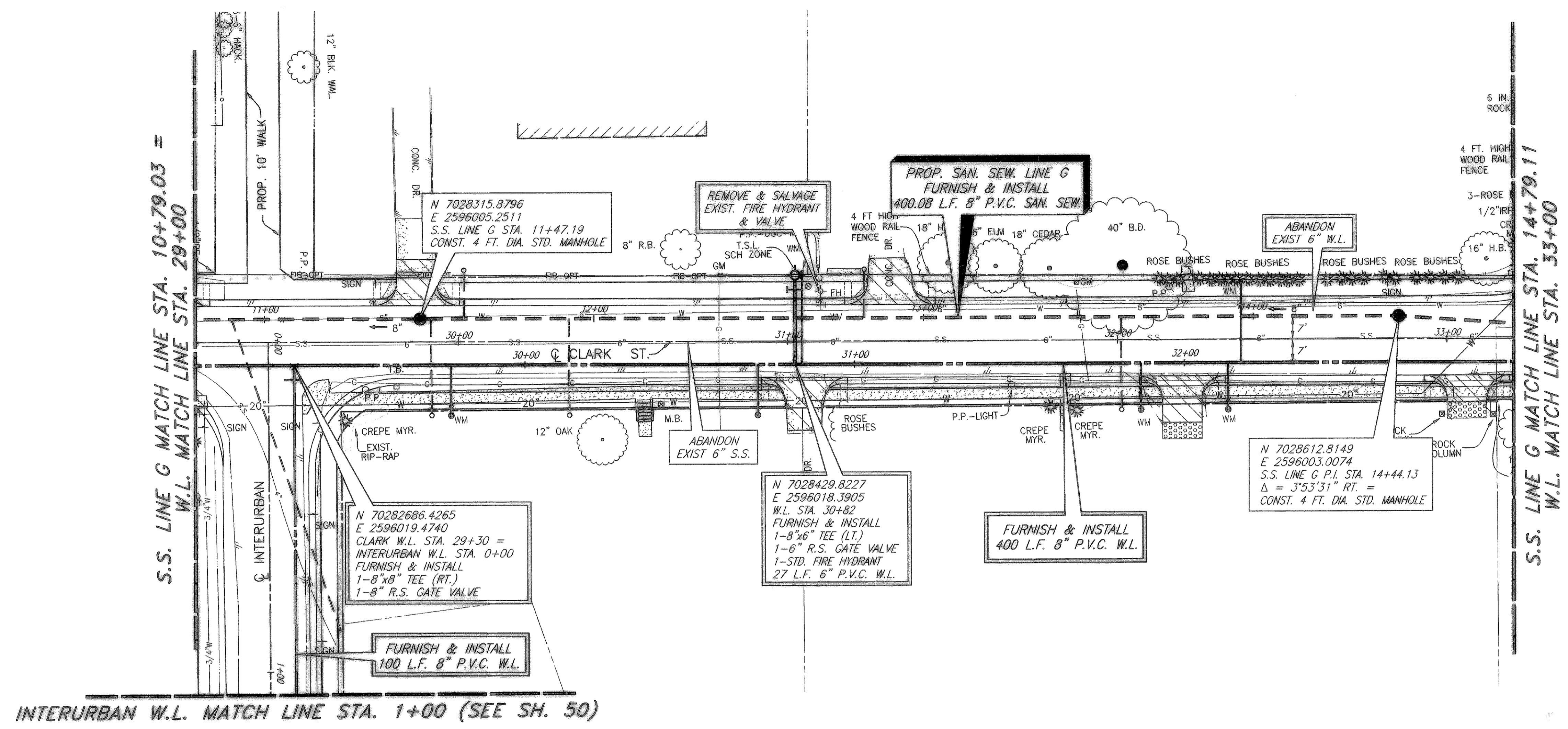


08/23/04 R.L. H:\ROCKWALL\2003120\PLAN-SHEETS\2003120-SAN-WL-7.DWG SCALE: 1=20 BLOCKS: ROCKWALL\2003120\X.X
 XREF: ROCKWALL\2003120\X.X



INTERURBAN W.L. MATCH LINE STA. 1+00 (SEE SH. 50)

S.S. LINE G MATCH LINE STA. 14+79.11
W.L. MATCH LINE STA. 33+00

LEGEND

- PROPOSED WATER SERVICE
- PROPOSED SEWER SERVICE

PROPOSED CLARK ST. WATER SERVICES

| LOCATION | PROPOSED 1 INCH SERVICE |
|--------------------|-------------------------|
| W.L. STA. 29+77.58 | 12.5 L.F. (RT.) |
| W.L. STA. 30+84.15 | 28 L.F. (LT.) |
| W.L. STA. 31+86.89 | 10 L.F. (RT.) |
| W.L. STA. 32+13.31 | 11.5 L.F. (RT.) |
| W.L. STA. 32+17.31 | 24.5 L.F. (LT.) |
| TOTAL: 86.5 L.F. | |

FURNISH & INSTALL PROP. 1" OUTLET AND NEW 1" SDR-9 (POLYUBE) WATER SERVICE. TRANSFER OF WATER SERVICE SHALL INCLUDE METER BOX, FITTINGS, 1" SERVICE SADDLE, CONNECTION TO EXISTING SERVICE, AND INSTALLATION OF CITY PROVIDED METER AND SHALL BE PAID ON A PER EACH BASIS.

PROPOSED LINE "G" SEWER SERVICES

| LOCATION | PROPOSED 4 INCH SERVICE |
|-----------------|-------------------------|
| S.S. STA. 10+90 | |
| TOTAL: 100 L.F. | |

FURNISH & INSTALL
 1-8"x4" WYE
 1-DOUBLE CLEANOUT
 1-4" PLUG
 CONNECT TO EXIST. SAN. SEW. SERVICE
 PAYMENT FOR TRANSFER OF SANITARY SEWER SERVICE SHALL BE PAID ON A PER EACH BASIS.

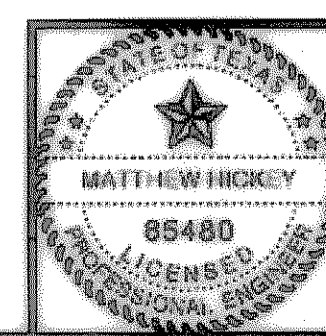
CITY OF ROCKWALL, TEXAS

**CLARK STREET
 SANITARY SEWER & WATER LINE PLAN
 W.L. STA. 29+00 TO W.L. STA. 33+00**

BIRKHOFF, HENDRICKS & CONWAY, L.L.P.
 CONSULTING ENGINEERS
 Dallas, Texas

REVISED TO CONFORM
 TO CONSTRUCTION RECORDS
 BY M.H. DATE 12/04/2006

THESE DOCUMENTS ARE FOR
 BIDDING, CONSTRUCTION,
 AND PERMIT PURPOSES.
 DATE: 8/6/04



| | | |
|-------------------|--------------------|--------------|
| DESIGNED BY: M.H. | PROJECT: 2003-120 | SHEET NO. 40 |
| DRAWN BY: B.H.C. | DATE: AUGUST, 2004 | OF X SHEETS |

These plans and related specifications were prepared for construction of this specific project only. Reuse of these documents is not permitted without written authorization of Birkhoff, Hendricks & Conway, L.L.P.