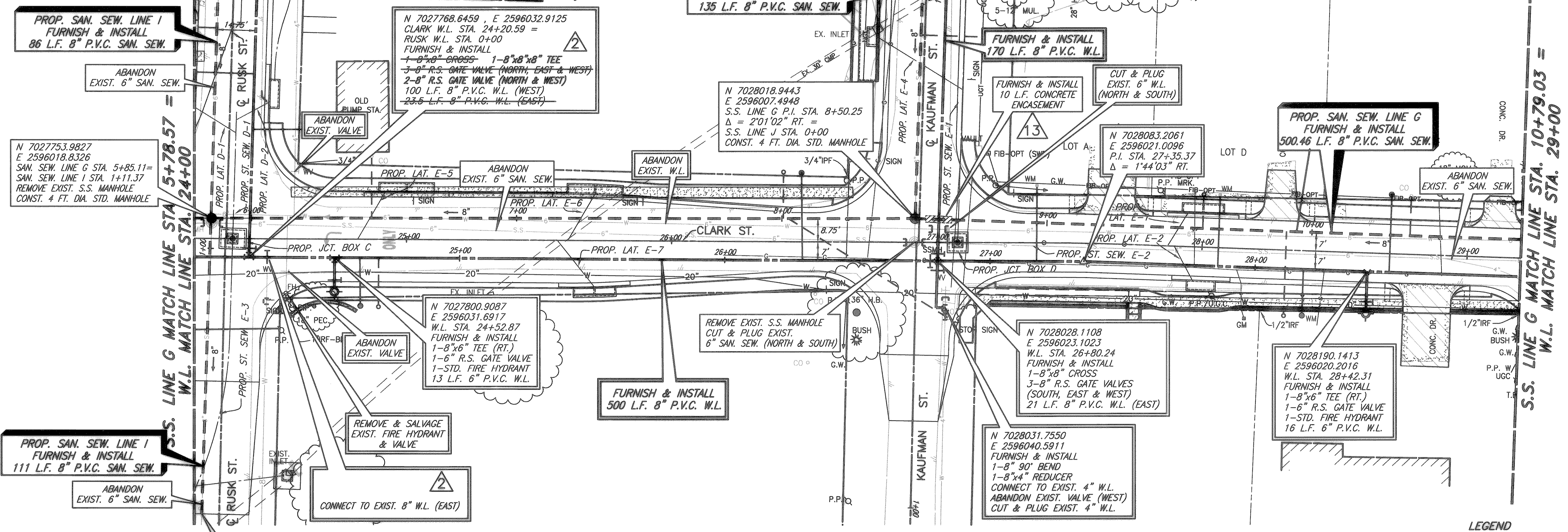
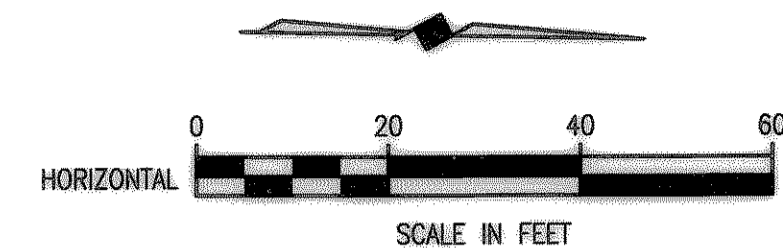


KAUFMAN W.L. MATCH LINE STA. 1+70 (SEE SH. 49)

S.S. LINE I MATCH LINE STA. 1+97.11
RUSK W.L. MATCH LINE STA. 1+00 (SEE SH. 48)



LEGEND

- PROPOSED WATER SERVICE
- - - PROPOSED SEWER SERVICE
- 13 FIELD CHANGE NO. 13 - DECEMBER 13, 2005
- 2 FIELD CHANGE NO. 2 - JANUARY 25, 2005

These plans and related specifications were prepared for construction of this specific project only. Reuse of these documents is not permitted without written authorization of Birkhoff, Hendricks & Conway, L.L.P.

PROPOSED LINE "G" SEWER SERVICES

LOCATION	PROPOSED 4 INCH SERVICE
S.S. STA. 6+41.51	24 L.F. (LT.)
S.S. STA. 8+02.48	71 L.F. (LT.)
S.S. STA. 10+36.98	15 L.F. (LT.)
TOTAL: 110 L.F.	

FURNISH & INSTALL
1-8"x4" WYE
1-DOUBLE CLEANOUT
1-4" PLUG
CONNECT TO EXIST. SAN. SEW. SERVICE
PAYMENT FOR TRANSFER OF SANITARY SEWER SERVICE SHALL BE PAID ON A PER EACH BASIS.

PROPOSED LINE "I" SEWER SERVICES

LOCATION	PROPOSED 4 INCH SERVICE
S.S. STA. 1+83.17	7.5 L.F. (LT.)
TOTAL: 7.5 L.F.	

FURNISH & INSTALL
1-8"x4" WYE
1-DOUBLE CLEANOUT
1-4" PLUG
CONNECT TO EXIST. SAN. SEW. SERVICE
PAYMENT FOR TRANSFER OF SANITARY SEWER SERVICE SHALL BE PAID ON A PER EACH BASIS.

PROPOSED LINE "J" SEWER SERVICES

LOCATION	PROPOSED 4 INCH SERVICE
S.S. STA. 1+83.17	21 L.F. (LT.)
TOTAL: 21 L.F.	

FURNISH & INSTALL
1-8"x4" WYE
1-DOUBLE CLEANOUT
1-4" PLUG
CONNECT TO EXIST. SAN. SEW. SERVICE
PAYMENT FOR TRANSFER OF SANITARY SEWER SERVICE SHALL BE PAID ON A PER EACH BASIS.

PROPOSED RUSK ST. WATER SERVICES

LOCATION	PROPOSED 1 INCH SERVICE
W.L. STA. 0+52.10	52 L.F. (LT.)
TOTAL: 52 L.F.	

FURNISH & INSTALL PROP. 1" OUTLET AND NEW 1" SDR-9 (POLYUBE) WATER SERVICE. TRANSFER OF WATER SERVICE SHALL INCLUDE METER BOX, FITTINGS, 1" SERVICE SADDLE, CONNECTION TO EXISTING SERVICE, AND INSTALLATION OF CITY PROVIDED METER AND SHALL BE PAID ON A PER EACH BASIS.

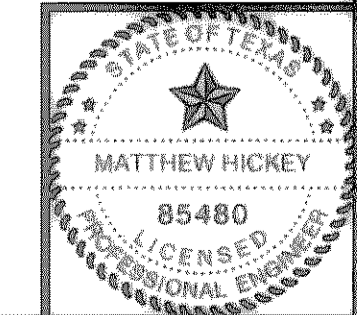
PROPOSED CLARK ST. WATER SERVICES

LOCATION	PROPOSED 1 INCH SERVICE
W.L. STA. 27+17.56	10 L.F. (RT.)
W.L. STA. 27+85.92	27 L.F. (LT.)
W.L. STA. 28+18.23	28.5 L.F. (LT.)
TOTAL: 65.5 L.F.	

FURNISH & INSTALL PROP. 1" OUTLET AND NEW 1" SDR-9 (POLYUBE) WATER SERVICE. TRANSFER OF WATER SERVICE SHALL INCLUDE METER BOX, FITTINGS, 1" SERVICE SADDLE, CONNECTION TO EXISTING SERVICE, AND INSTALLATION OF CITY PROVIDED METER AND SHALL BE PAID ON A PER EACH BASIS.

REVISED TO CONFORM TO CONSTRUCTION RECORDS
BY M.H. DATE 12/04/2006

THESE DOCUMENTS ARE FOR BIDDING, CONSTRUCTION, AND PERMIT PURPOSES.
DATE: 8/16/04



CITY OF ROCKWALL, TEXAS

**CLARK STREET
SANITARY SEWER & WATER LINE PLAN
W.L. STA. 24+00 TO STA. W.L. 29+00**

BIRKHOFF, HENDRICKS & CONWAY, L.L.P.
CONSULTING ENGINEERS
Dallas, Texas

DESIGNED BY: M.H.	PROJECT: 2003-120	SHEET NO. 39
DRAWN BY: B.H.C.	DATE: AUGUST, 2004	OF X SHEETS

08/21/04 R.L. H: ROCKWALL 20031201-LAW-SHEETS 20031201-SAN-W-6.DWG SCALE: 1=20 BLOCKS: ROCKWALL 20031201-XX REF: ROCKWALL 20031201-XX