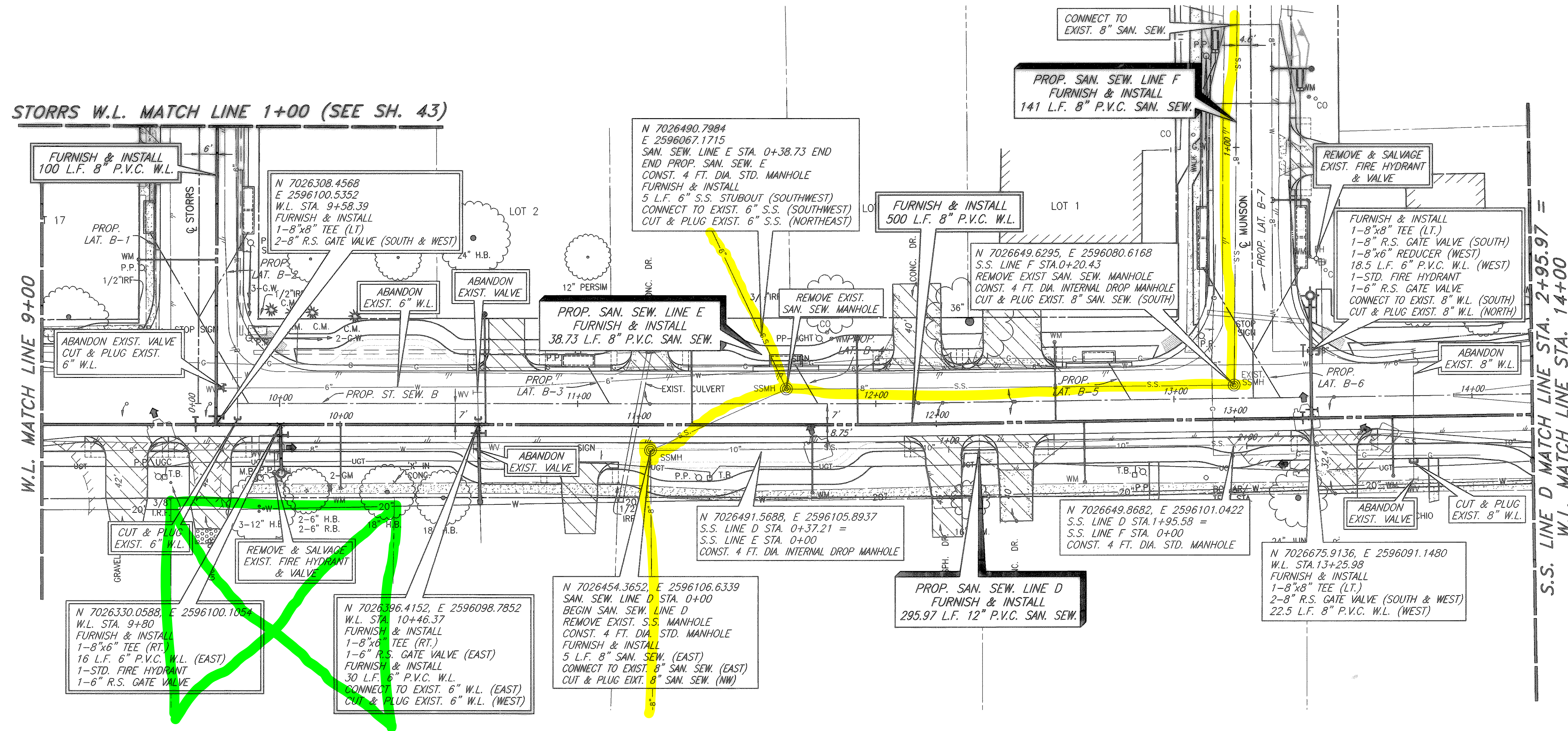


STORRS W.L. MATCH LINE 1+00 (SEE SH. 43)



W.L. MATCH LINE 9+00

S.S. LINE D MATCH LINE STA. 2+95.97 = W.L. MATCH LINE STA. 14+00

XREF: ROCKWALL 2003120.V1.X H: ROCKWALL 2003120.PLAN-SHEETS 2003120-SAN-WL-3.DWG SCALE: 1"=20' BLOCKS: ROCKWALL 2003120.V1.X 08/02/04 CAG

LEGEND

- PROPOSED WATER SERVICE
- PROPOSED SEWER SERVICE

PROPOSED STORRS ST. WATER SERVICES

LOCATION	PROPOSED 1 INCH SERVICE
W.L. STA. 0+55.16	26 L.F. (LT.)
W.L. STA. 1+20.51	15.5 L.F. (RT.)
TOTAL: 41.5 L.F.	
FURNISH & INSTALL PROP. 1" OUTLET AND NEW 1" SDR-9 (POLYTUBE) WATER SERVICE. TRANSFER OF WATER SERVICE SHALL INCLUDE METER BOX, FITTINGS, 1" SERVICE SADDLE, CONNECTION TO EXISTING SERVICE, AND INSTALLATION OF CITY PROVIDED METER AND SHALL BE PAID ON A PER EACH BASIS.	

PROPOSED CLARK ST. WATER SERVICES

LOCATION	PROPOSED 1 INCH SERVICE
W.L. STA. 10+00.19	21 L.F. (RT.)
W.L. STA. 11+58.43	23 L.F. (RT.)
W.L. STA. 11+73.68	29 L.F. (LT.)
W.L. STA. 12+40.05	27 L.F. (LT.)
W.L. STA. 12+49.58	20 L.F. (RT.)
W.L. STA. 13+53.03	20 L.F. (RT.)
TOTAL: 140 L.F.	
FURNISH & INSTALL PROP. 1" OUTLET AND NEW 1" SDR-9 (POLYTUBE) WATER SERVICE. TRANSFER OF WATER SERVICE SHALL INCLUDE METER BOX, FITTINGS, 1" SERVICE SADDLE, CONNECTION TO EXISTING SERVICE, AND INSTALLATION OF CITY PROVIDED METER AND SHALL BE PAID ON A PER EACH BASIS.	

PROPOSED LINE "F" SEWER SERVICES

LOCATION	PROPOSED 4 INCH SERVICE
S.S. STA. 0+47.90	32.5 L.F. (RT.)
TOTAL: 32.5 L.F.	
FURNISH & INSTALL 1-8"x4" WYE 1-DOUBLE CLEANOUT 1-4" PLUG CONNECT TO EXIST. SAN. SEW. SERVICE PAYMENT FOR TRANSFER OF SANITARY SEWER SERVICE SHALL BE PAID ON A PER EACH BASIS.	

NOTE:

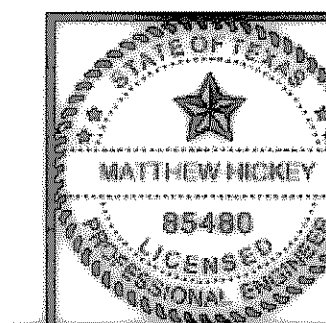
WARNING!!! TXU GAS LINE CROSSES SAN. SEW. LINES D, E & F AND CROSSES PROPOSED WATERLINE AT STORRS & MUNSON. CONTACT 1-800-DIG-TESS PRIOR TO EXCAVATION.

These plans and related specifications were prepared for construction of this specific project only. Reuse of these documents is not permitted without written authorization of Birkhoff, Hendricks & Conway, L.L.P.

CITY OF ROCKWALL, TEXAS

**CLARK STREET
SANITARY SEWER & WATER LINE PLAN
W.L. STA 9+00 TO W.L. STA. 14+00**

BIRKHOFF, HENDRICKS & CONWAY, L.L.P.
CONSULTING ENGINEERS
Dallas, Texas



DESIGNED BY: M.H.	PROJECT: 2003-120	SHEET NO. 36
DRAWN BY: B.H.C.	DATE: AUGUST, 2004	OF X SHEETS

REVISED TO CONFORM TO CONSTRUCTION RECORDS
BY M.H. DATE 12/04/2006

THESE DOCUMENTS ARE FOR BIDDING, CONSTRUCTION, AND PERMIT PURPOSES.
DATE: 8/2/04