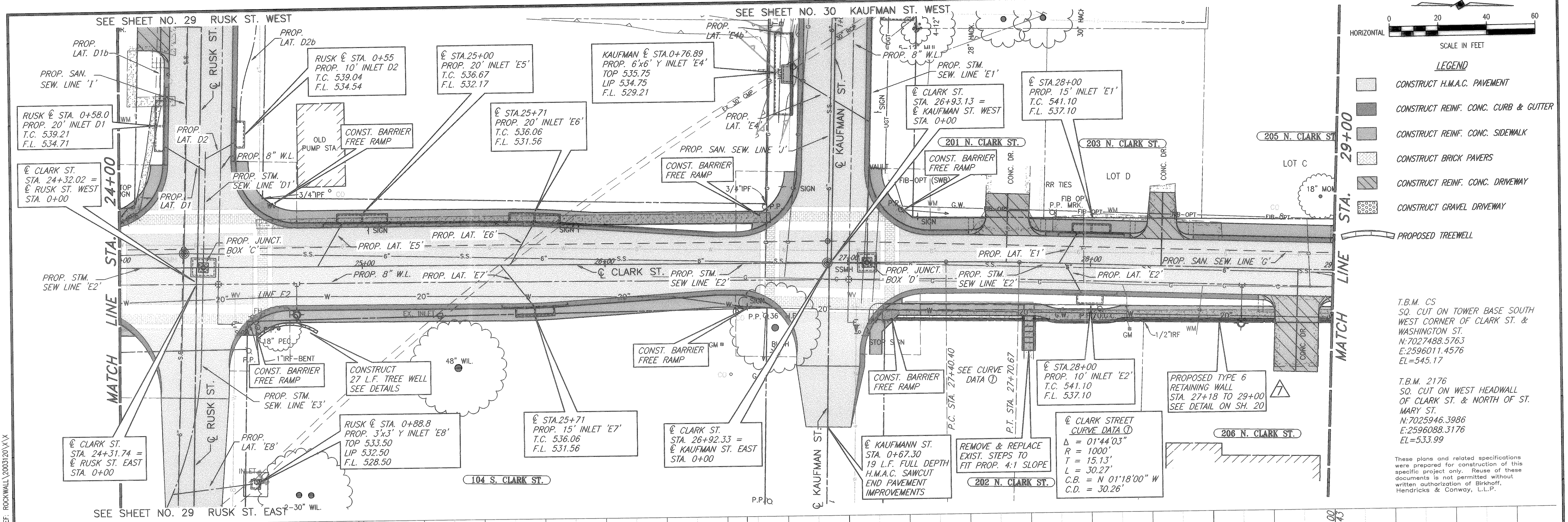


07/02/04 R.L. H:\ROCKWALL\2003120\PLAN-SHEETS\2003120-PP6.DWG SCALE: 1"=20' BLOCKS: ROCKWALL\2003120\X.X BLOCKS: ROCKWALL\2003120\X.X XREF: ROCKWALL\2003120\X.X



0 20 40 60
HORIZONTAL SCALE IN FEET

LEGEND

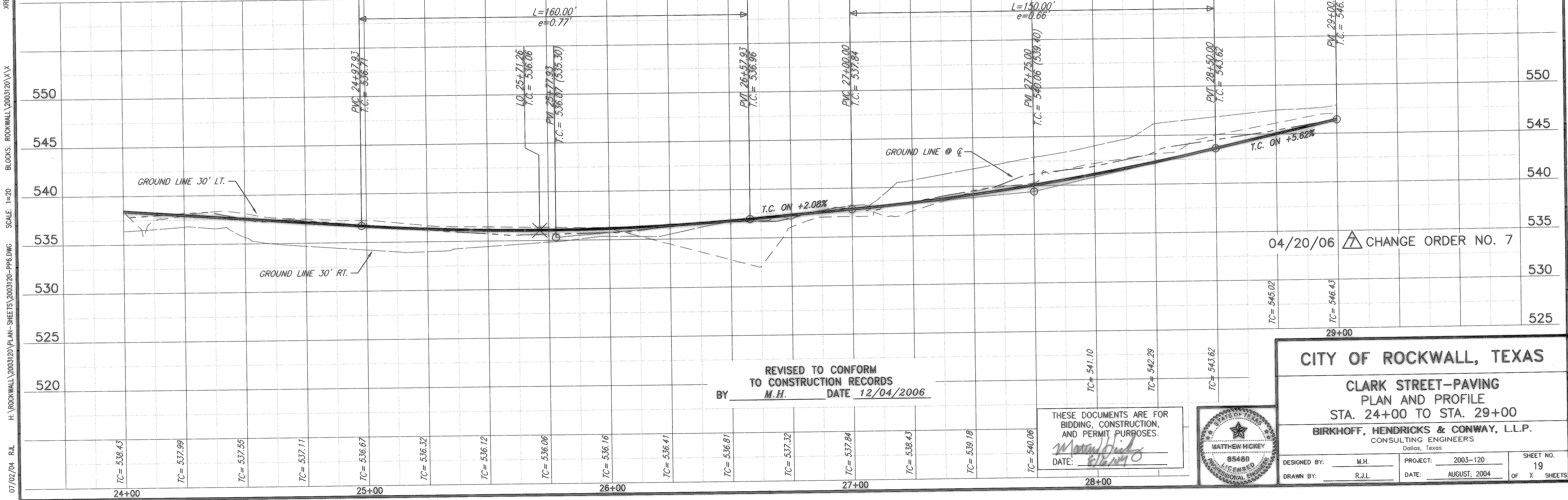
- CONSTRUCT H.M.A.C. PAVEMENT
- CONSTRUCT REINF. CONC. CURB & GUTTER
- CONSTRUCT REINF. CONC. SIDEWALK
- CONSTRUCT BRICK PAVERS
- CONSTRUCT REINF. CONC. DRIVEWAY
- CONSTRUCT GRAVEL DRIVEWAY

PROPOSED TREEWELL

T.B.M. CS
SQ. CUT ON TOWER BASE SOUTH
WEST CORNER OF CLARK ST. &
WASHINGTON ST.
N:7027488.5763
E:2596011.4576
EL=545.17

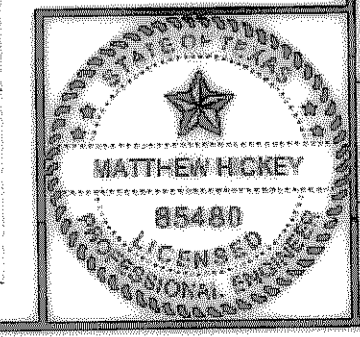
T.B.M. 2176
SQ. CUT ON WEST HEADWALL
OF CLARK ST. & NORTH OF ST.
MARY ST.
N:7025946.3986
E:2596088.3176
EL=533.99

These plans and related specifications
were prepared for construction of this
specific project only. Reuse of these
documents is not permitted without
written authorization of Birkhoff,
Hendricks & Conway, L.L.P.



REVISED TO CONFORM
TO CONSTRUCTION RECORDS
BY M.H. DATE 12/04/2006

THESE DOCUMENTS ARE FOR
BIDDING, CONSTRUCTION,
AND PERMIT PURPOSES.
Matthew Hickey
DATE: 8/26/04



CITY OF ROCKWALL, TEXAS

**CLARK STREET-PAVING
PLAN AND PROFILE
STA. 24+00 TO STA. 29+00**

BIRKHOFF, HENDRICKS & CONWAY, L.L.P.
CONSULTING ENGINEERS
Dallas, Texas

DESIGNED BY: <u>M.H.</u>	PROJECT: <u>2003-120</u>	SHEET NO. <u>19</u>
DRAWN BY: <u>R.J.L.</u>	DATE: <u>AUGUST, 2004</u>	OF <u>X</u> SHEETS