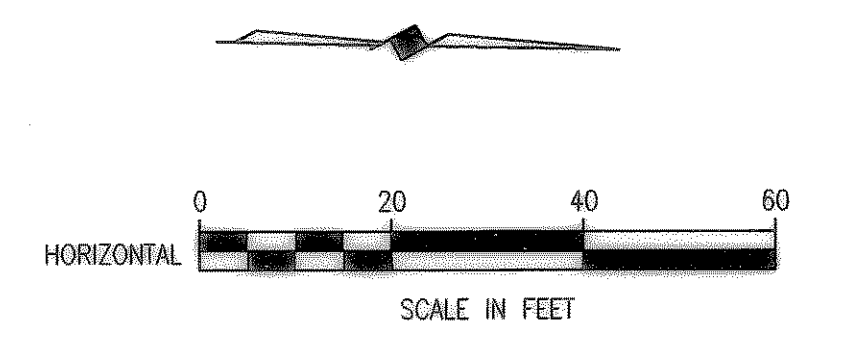
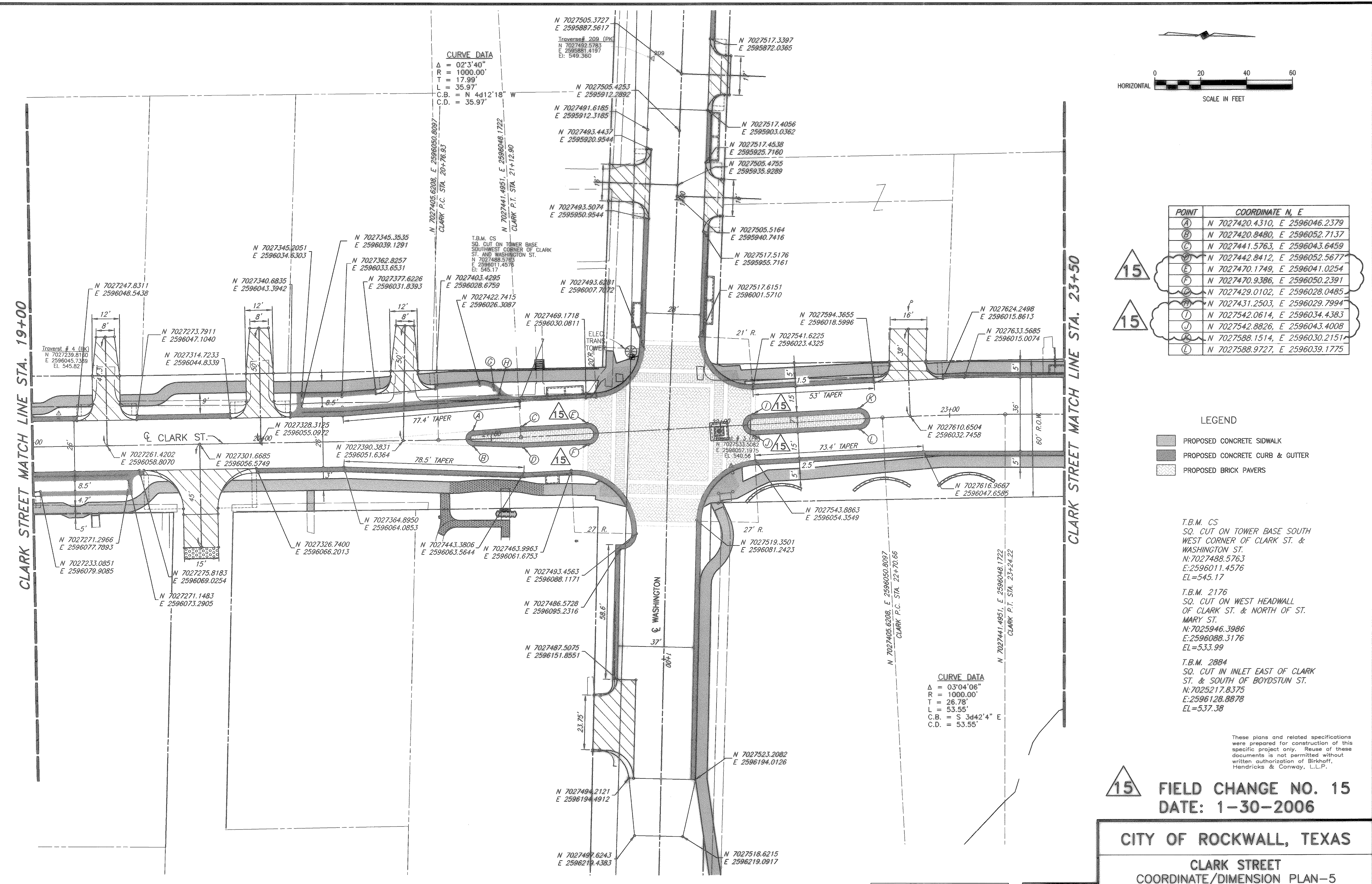


H:\ROCKWALL\2003\120\PLAN-SHEETS\2003120-COORD-05.DWG SCALE: 1=20 XREF: ROCKWALL\2003\120\BASE\PROP-BASE 07/28/04 CAG



POINT	COORDINATE N, E
A	N 7027420.4310, E 2596046.2379
B	N 7027420.8480, E 2596052.7137
C	N 7027441.5763, E 2596043.6459
D	N 7027442.8412, E 2596052.5677
E	N 7027470.1749, E 2596041.0254
F	N 7027470.9386, E 2596050.2391
G	N 7027429.0102, E 2596028.0485
H	N 7027431.2503, E 2596029.7994
I	N 7027542.0614, E 2596034.4383
J	N 7027542.8826, E 2596043.4008
K	N 7027588.1514, E 2596030.2151
L	N 7027588.9727, E 2596039.1775

- LEGEND**
- PROPOSED CONCRETE SIDEWALK
  - PROPOSED CONCRETE CURB & GUTTER
  - PROPOSED BRICK PAVERS

T.B.M. CS  
SQ. CUT ON TOWER BASE SOUTH  
WEST CORNER OF CLARK ST. &  
WASHINGTON ST.  
N: 7027488.5763  
E: 2596011.4576  
EL=545.17

T.B.M. 2176  
SQ. CUT ON WEST HEADWALL  
OF CLARK ST. & NORTH OF ST.  
MARY ST.  
N: 7025946.3986  
E: 2596088.3176  
EL=533.99

T.B.M. 2884  
SQ. CUT IN INLET EAST OF CLARK  
ST. & SOUTH OF BOYDSTUN ST.  
N: 7025217.8375  
E: 2596128.8878  
EL=537.38

**15** FIELD CHANGE NO. 15  
DATE: 1-30-2006

**CITY OF ROCKWALL, TEXAS**

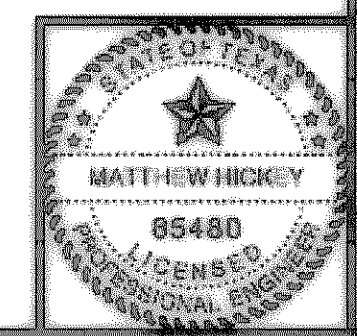
**CLARK STREET**  
COORDINATE/DIMENSION PLAN-5  
STA 19+00 TO STA. 23+50

**BIRKHOFF, HENDRICKS & CONWAY, L.L.P.**  
CONSULTING ENGINEERS  
Dallas, Texas

DESIGNED BY: M.H.	PROJECT: 2003-120	SHEET NO. 8
DRAWN BY: B.H.C.	DATE: AUGUST, 2004	OF X SHEETS

THESE DOCUMENTS ARE FOR  
BIDDING, CONSTRUCTION,  
AND PERMIT PURPOSES.

DATE: *8/10/04*



REVISED TO CONFORM  
TO CONSTRUCTION RECORDS  
BY *M.H.* DATE *12/04/2006*

These plans and related specifications  
were prepared for construction of this  
specific project only. Reuse of these  
documents is not permitted without  
written authorization of Birkhoff,  
Hendricks & Conway, L.L.P.

**CURVE DATA**  
Δ = 03°04'06"  
R = 1000.00'  
T = 26.78'  
L = 53.55'  
C.B. = S 3d42'4" E  
C.D. = 53.55'

**CURVE DATA**  
Δ = 02°3'40"  
R = 1000.00'  
T = 17.99'  
L = 35.97'  
C.B. = N 4d12'18" W  
C.D. = 35.97'