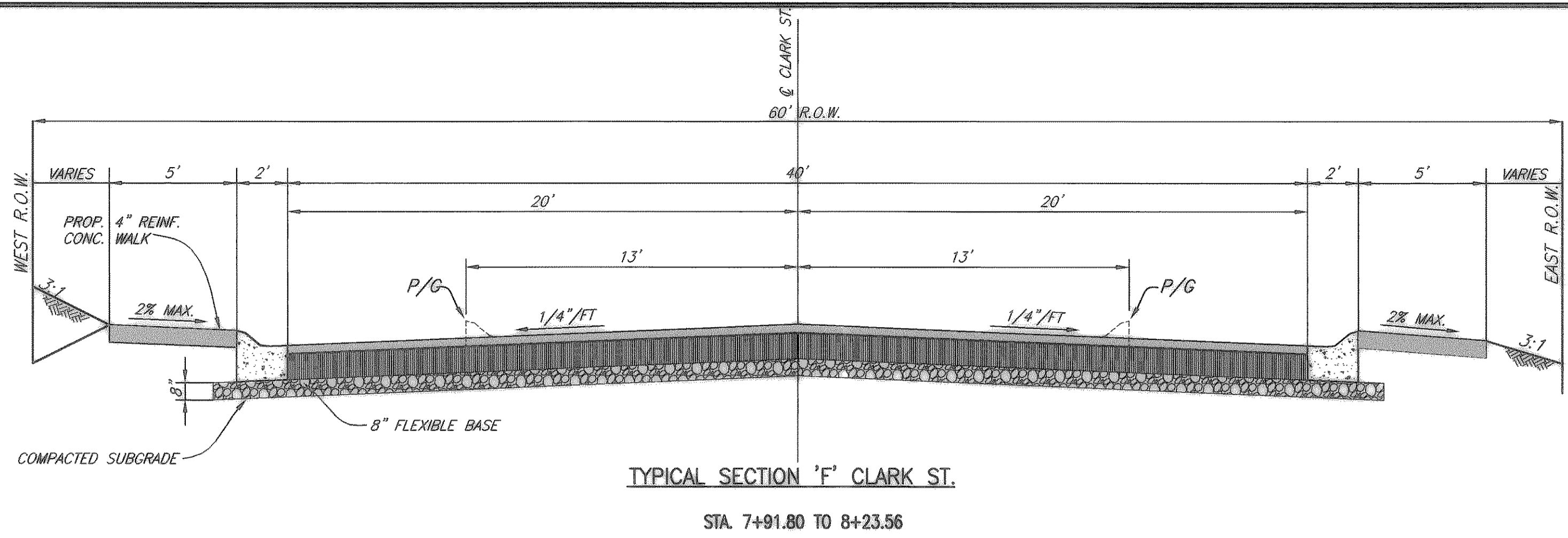


XREF: ROCKWALL\2003120\X.DWG

BLOCKS: ROCKWALL\2003120\X.DWG

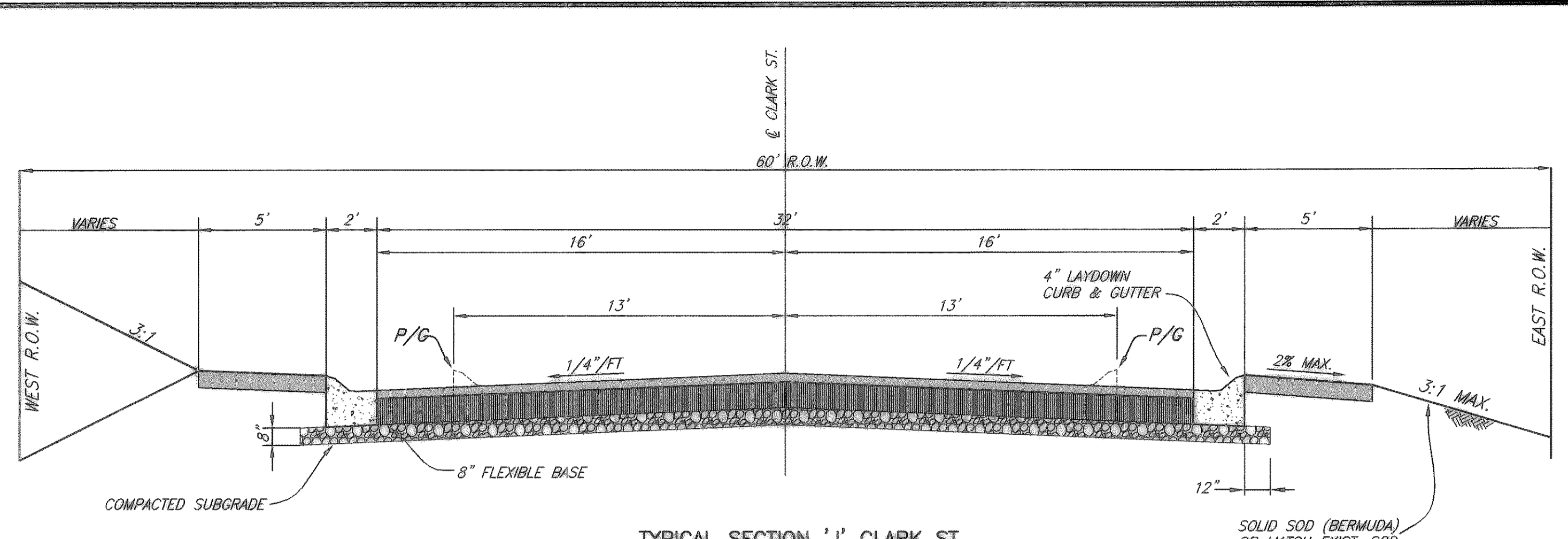
SCALE: 1=4

REV 01/04/05 R.L. H:\ROCKWALL\2003120\PLAN-SHEETS\2003120TY-B.DWG



TYPICAL SECTION 'F' CLARK ST.

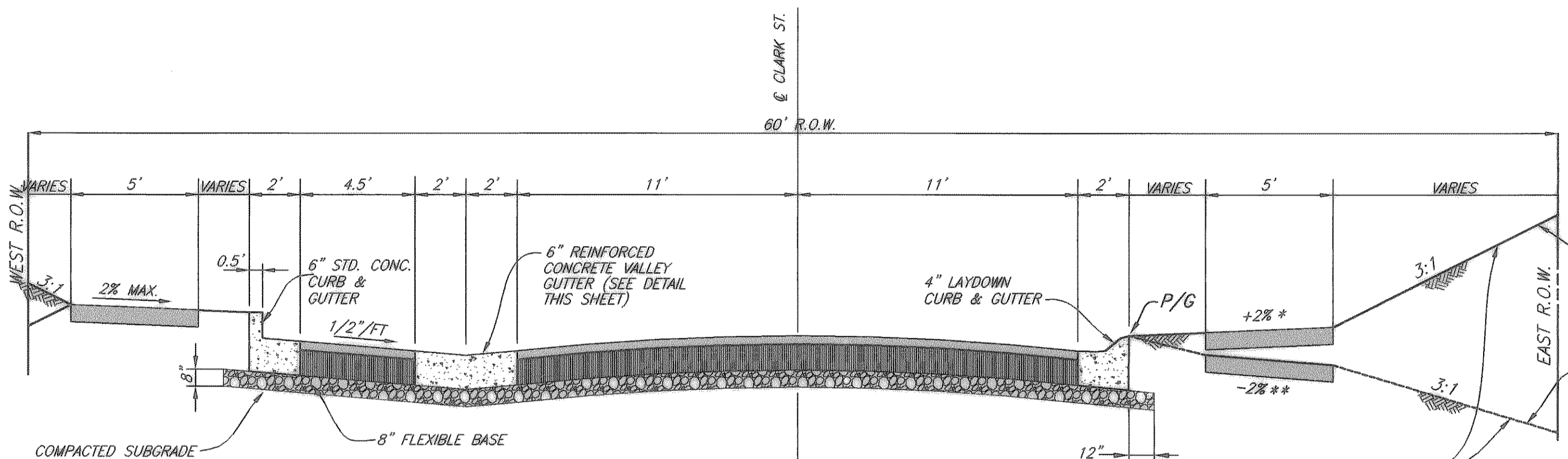
STA. 7+91.80 TO 8+23.56



TYPICAL SECTION 'J' CLARK ST.

STA. 23+24.22 TO 25+61.86

SOLID SOD (BERMUDA) OR MATCH EXIST. SOD ALL DISTURBED AREAS BOTH SIDES

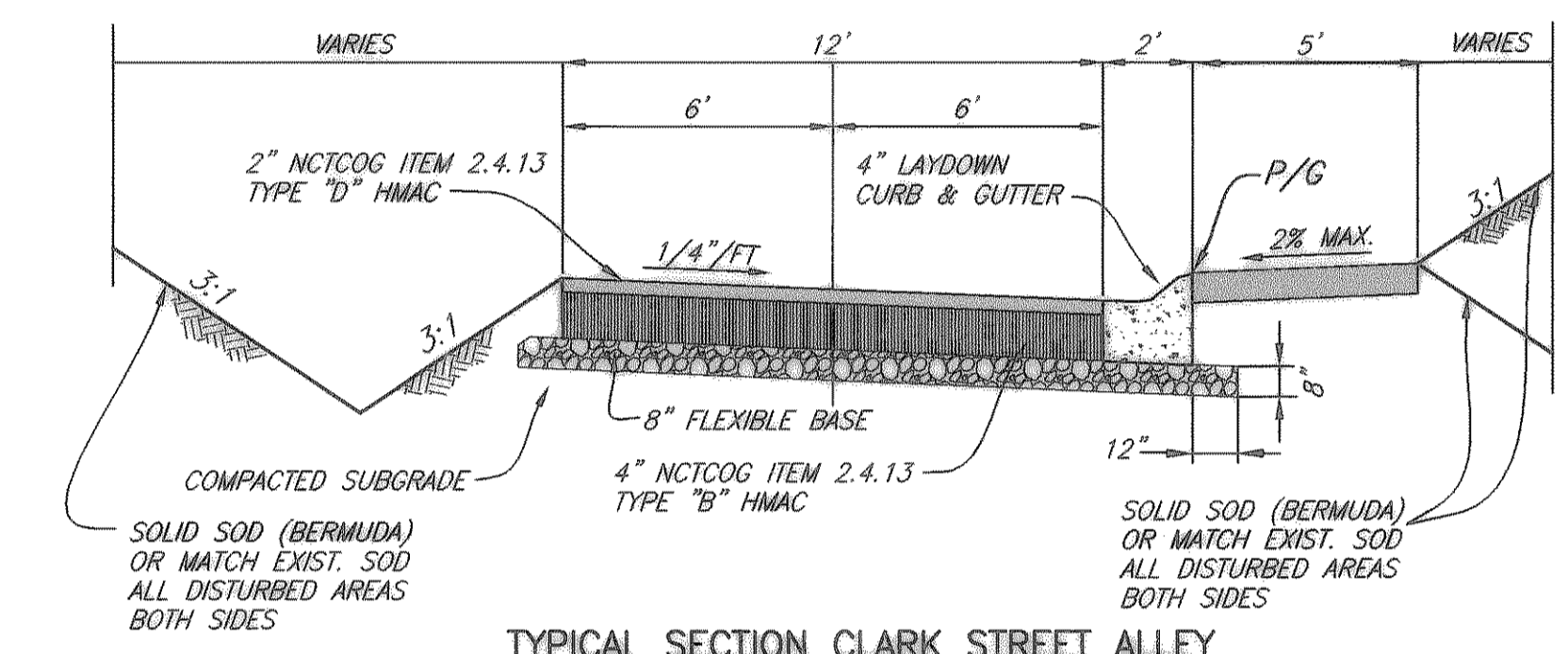


TYPICAL SECTION 'G' CLARK ST.

PARKING NICHE LEFT

* STA. 3+94.9 TO 4+61.23
** STA. 10+29.63 TO 10+72.41
** STA. 20+17.50 TO 20+95.81

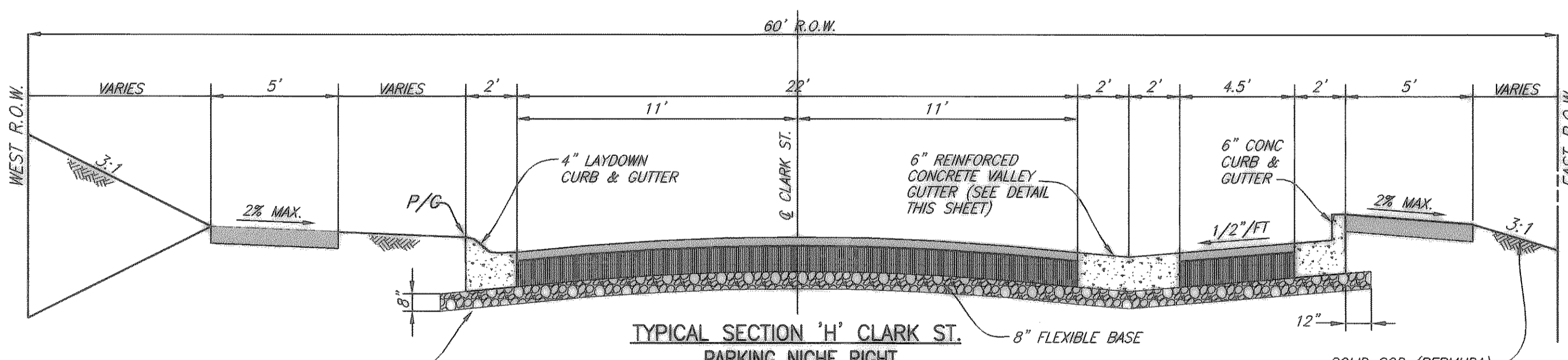
SOLID SOD (BERMUDA) OR MATCH EXIST. SOD ALL DISTURBED AREAS BOTH SIDES



TYPICAL SECTION CLARK STREET ALLEY

STA. 0+51.54 TO STA. 3+73.89
STA. 4+33.68 TO STA. 10+15.47

SOLID SOD (BERMUDA) OR MATCH EXIST. SOD ALL DISTURBED AREAS BOTH SIDES

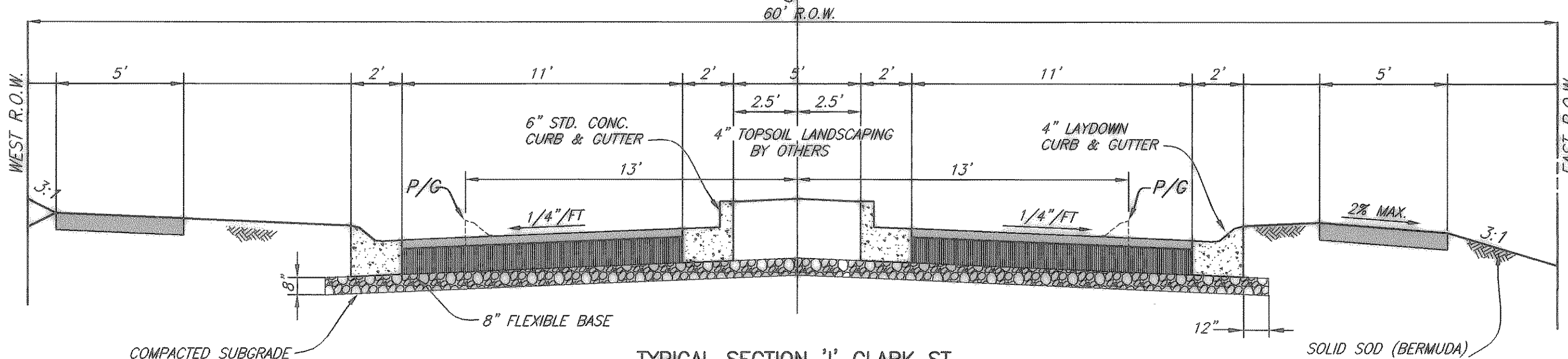


TYPICAL SECTION 'H' CLARK ST.

PARKING NICHE RIGHT

STA. 5+82.51 TO 6+82.57
STA. 10+73.10 TO 11+83.10
STA. 16+06.07 TO 16+64.49
STA. 18+59.41 TO 19+41.30

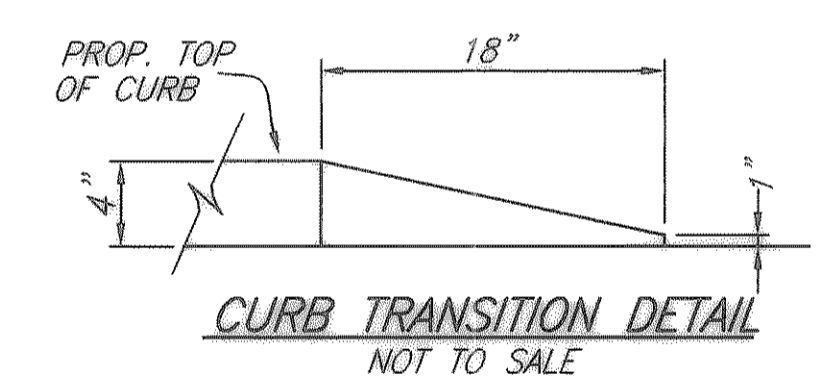
SOLID SOD (BERMUDA) OR MATCH EXIST. SOD ALL DISTURBED AREAS BOTH SIDES



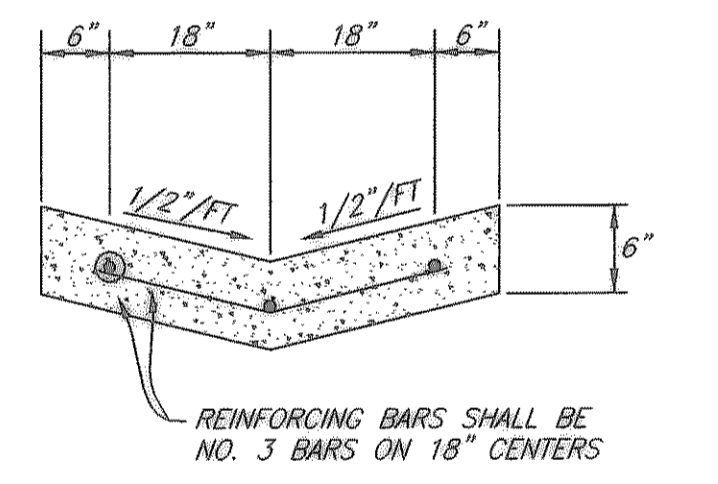
TYPICAL SECTION 'I' CLARK ST.

STA. 21+13.23

SOLID SOD (BERMUDA) OR MATCH EXIST. SOD ALL DISTURBED AREAS BOTH SIDES



CURB TRANSITION DETAIL
NOT TO SCALE



PARKING NICHE CONCRETE VALLEY GUTTER

P/G = PROFILE GRADE

NOTE:

- 1.-8" FLEXIBLE BASE SHALL BE NCTCOG ITEM 2.1.3. (b) (MODIFIED) COMPACTED TO A MINIMUM OF 95% MODIFIED PROCTOR DENSITY (ASTM D1557). THE N.C.T.C.O.G. FLEXIBLE BASE SHALL BE MODIFIED ACCORDING TO THE FOLLOWING
 MODIFIED N.C.T.C.O.G. GRADATION
 PASSING 1-3/4" SIEVE.....100%
 PASSING NO. 4 SIEVE.....35+55%
 PASSING NO. 40 SIEVE.....15+30%
- 2.-FLEXIBLE BASE SHALL BE ON A 6" COMPACTED SUBGRADE COMPACTED BETWEEN 95 PROCTOR (ASTM D698) AT A MOISTURE CONTENT BETWEEN 0 AND +4% POINTS OF OPTIMUM.
- 3.-A PRIME COAT SHALL BE REQUIRED BETWEEN THE COMPACTED FLEX BASE AND TYPE "B" H.M.A.C. AND A TACK COAT SHALL BE REQUIRED BETWEEN THE TYPE B & TYPE D H.M.A.C. NO SEPARATE PAY ITEM WILL BE MADE FOR THE PRIME AND THE TACK COATS.
- 4.-CONTRACTOR SHALL REFER TO THE STORM WATER POLLUTION PREVENTION PLAN FOR LOCATIONS OF AREAS TO BE SOLID SODDED OR HYDROMULCHED.

These plans and related specifications were prepared for construction of this specific project only. Reuse of these documents is not permitted without written authorization of Birkhoff, Hendricks & Conway, L.L.P.

REVISED TO CONFORM TO CONSTRUCTION RECORDS
BY M.H. DATE 12/04/2006

THESE DOCUMENTS ARE FOR BIDDING, CONSTRUCTION, AND PERMIT PURPOSES.
DATE: 8/6/04



CITY OF ROCKWALL, TEXAS

CLARK STREET-STORM SEWER TYPICAL SECTIONS

BIRKHOFF, HENDRICKS & CONWAY, L.L.P.
CONSULTING ENGINEERS
Dallas, Texas

DESIGNED BY: M.H.	PROJECT: 2003-120	SHEET NO. 3
DRAWN BY: B.H.C.	DATE: AUGUST, 2004	OF X SHEETS