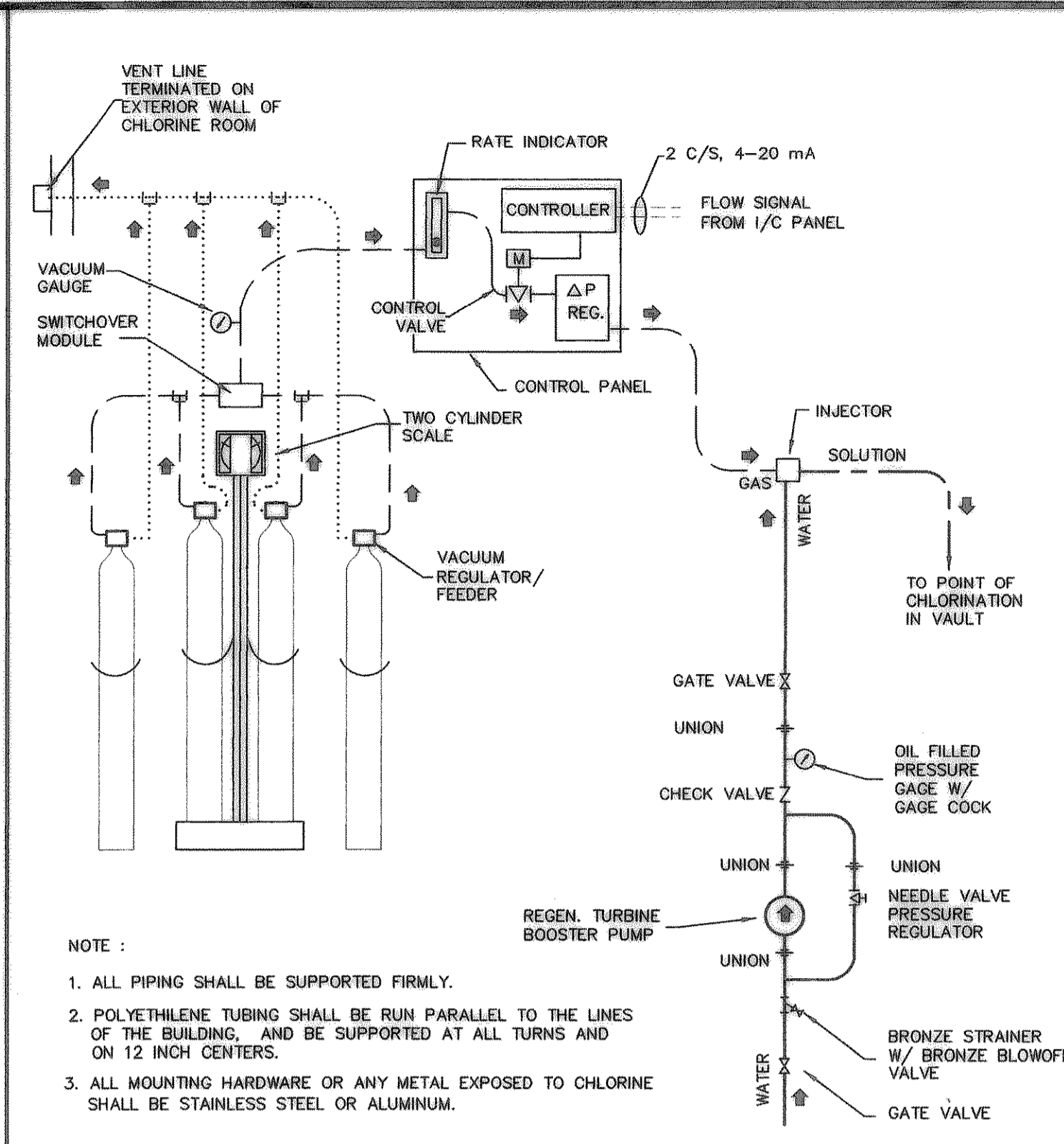


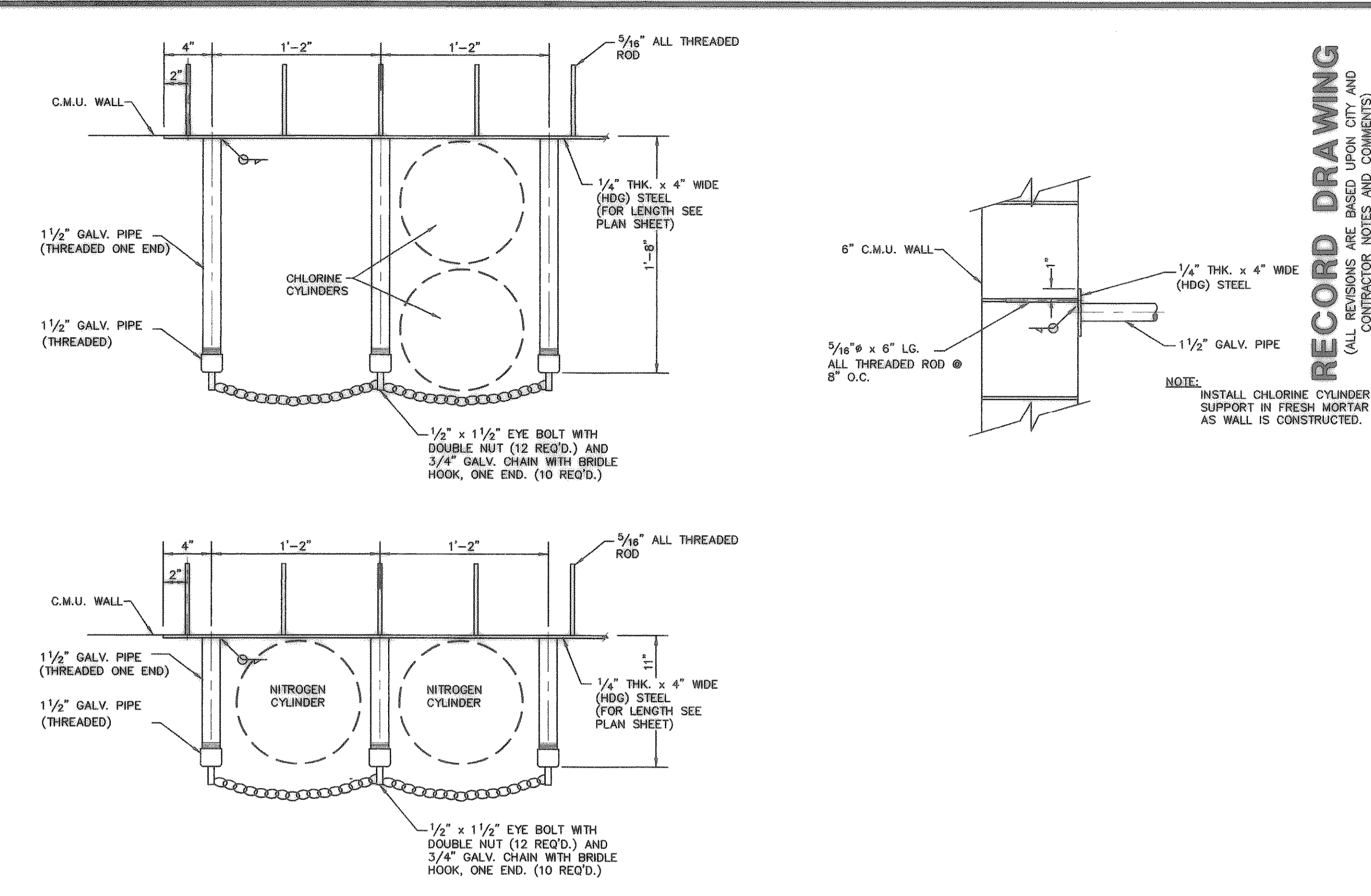
MARK	DESCRIPTION	NOTES
1	CHLORINE SCALE	FURNISHED BY CHLORINATOR MANUFACTURER
2	VACUUM REGULATOR	FURNISHED BY CHLORINATOR MANUFACTURER
3	AUTO SWITCH OVER VALVE	FURNISHED BY CHLORINATOR MANUFACTURER
4	CHLORINE FLEX CONNECTION	FURNISHED BY CHLORINATOR MANUFACTURER
5	AUTOMATIC FEED CTRL PANEL	FURNISHED BY CHLORINATOR MANUFACTURER
6	1 1/2" COPPER WATER LINE	RIGID COPPER ABOVE GRADE, SOFT COPPER ELSEWHERE. INSULATE WATER LINE WITH 1" RIGID INSULATION W/ ALUM JACKET
7	PRESSURE GAUGE	OIL FILLED, 4.5" DIA.
8	CHLORINE INJECTOR	FURNISHED BY CHLORINATOR MANUFACTURER
9	1 1/2" SCH 40 PVC CL2 SOL'N	USE SPECIFIED PIPE CLAMPS @ 5 FT. CENTERS
10	3/4" GALV. STL. CYLINDER CHAIN	FURNISHED BY SCALE MANUFACTURER
11	150 LB. CHLORINE CYLINDER	FURNISHED BY OWNER
12	1/2" SCH 40 PVC VENT LINE	
13	INSECT SCREEN	
14	VACUUM GAUGE	WITH S.S. CHEMICAL PROTECTOR 4.5"

NOTE: TYPICAL INSTALLATION - SEE SHEET M3 FOR WATER & CHEMICAL PIPE LOCATION.  
**1 CHLORINE EQUIPMENT INSTALLATION DETAIL**  
 NO SCALE

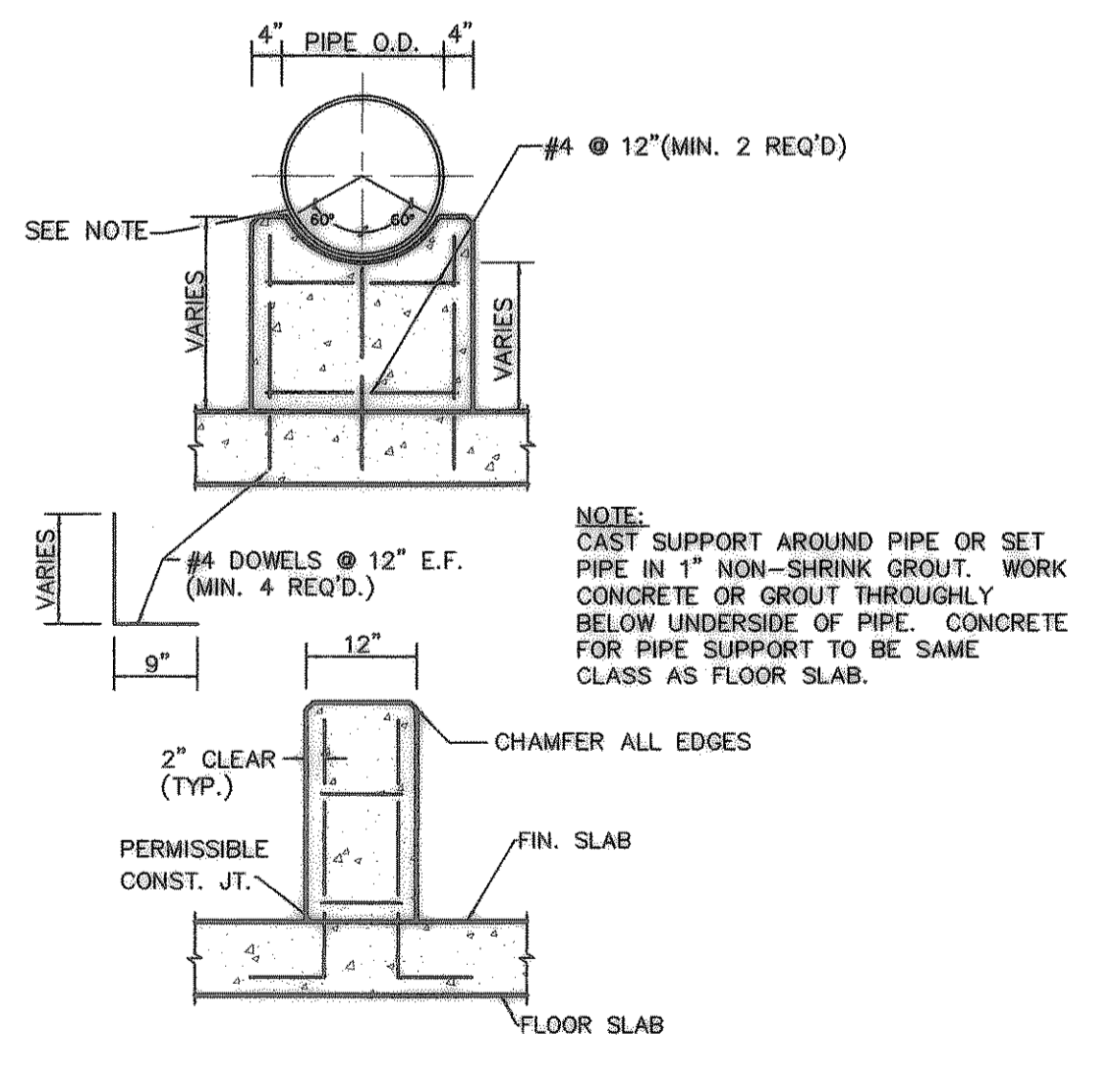


NOTE:  
 1. ALL PIPING SHALL BE SUPPORTED FIRMLY.  
 2. POLYETHYLENE TUBING SHALL BE RUN PARALLEL TO THE LINES OF THE BUILDING, AND BE SUPPORTED AT ALL TURNS AND ON 12 INCH CENTERS.  
 3. ALL MOUNTING HARDWARE OR ANY METAL EXPOSED TO CHLORINE SHALL BE STAINLESS STEEL OR ALUMINUM.  
 4. NO PRESSURIZED CHLORINE PIPING SHALL BE USED IN INSTALLATION.  
 5. FOR DOSAGES MORE THAN 50 P.P.D. USE TWO CYLINDER FEED MANUALLY ADJUSTED TO PROVIDE EQUAL FEEDING RATES.

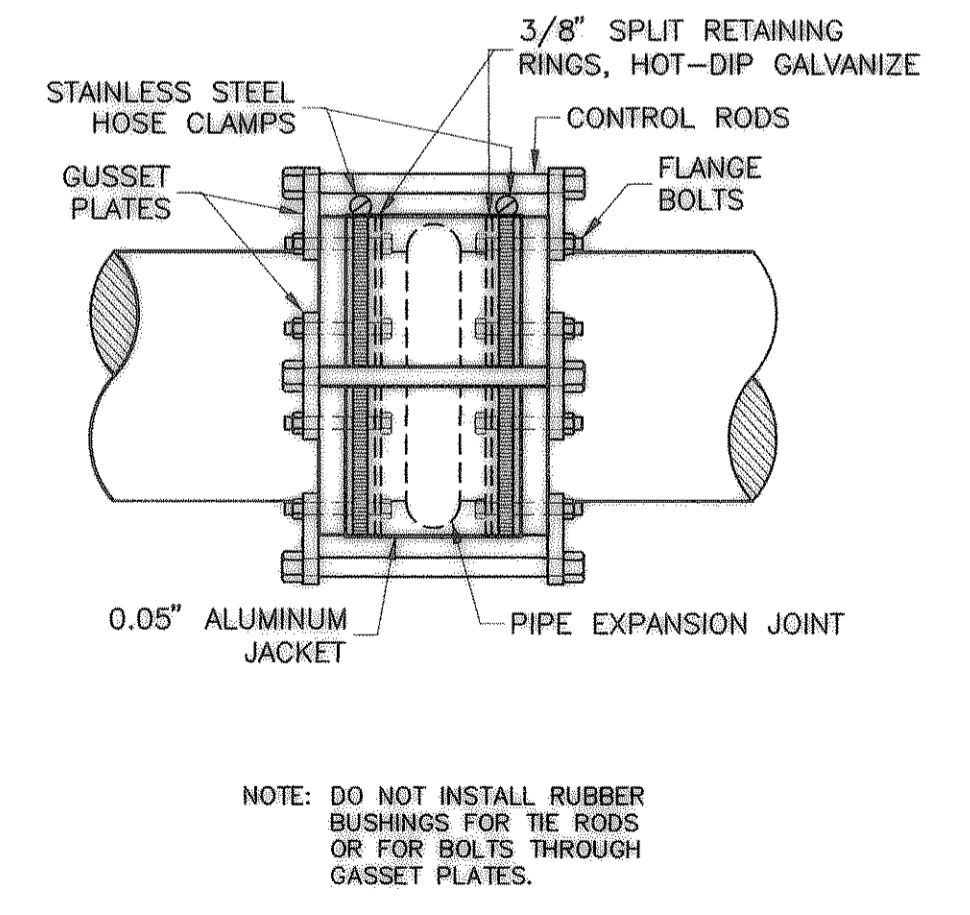
**2 CHLORINATOR PROCESS FLOW SCHEMATIC**  
 NO SCALE



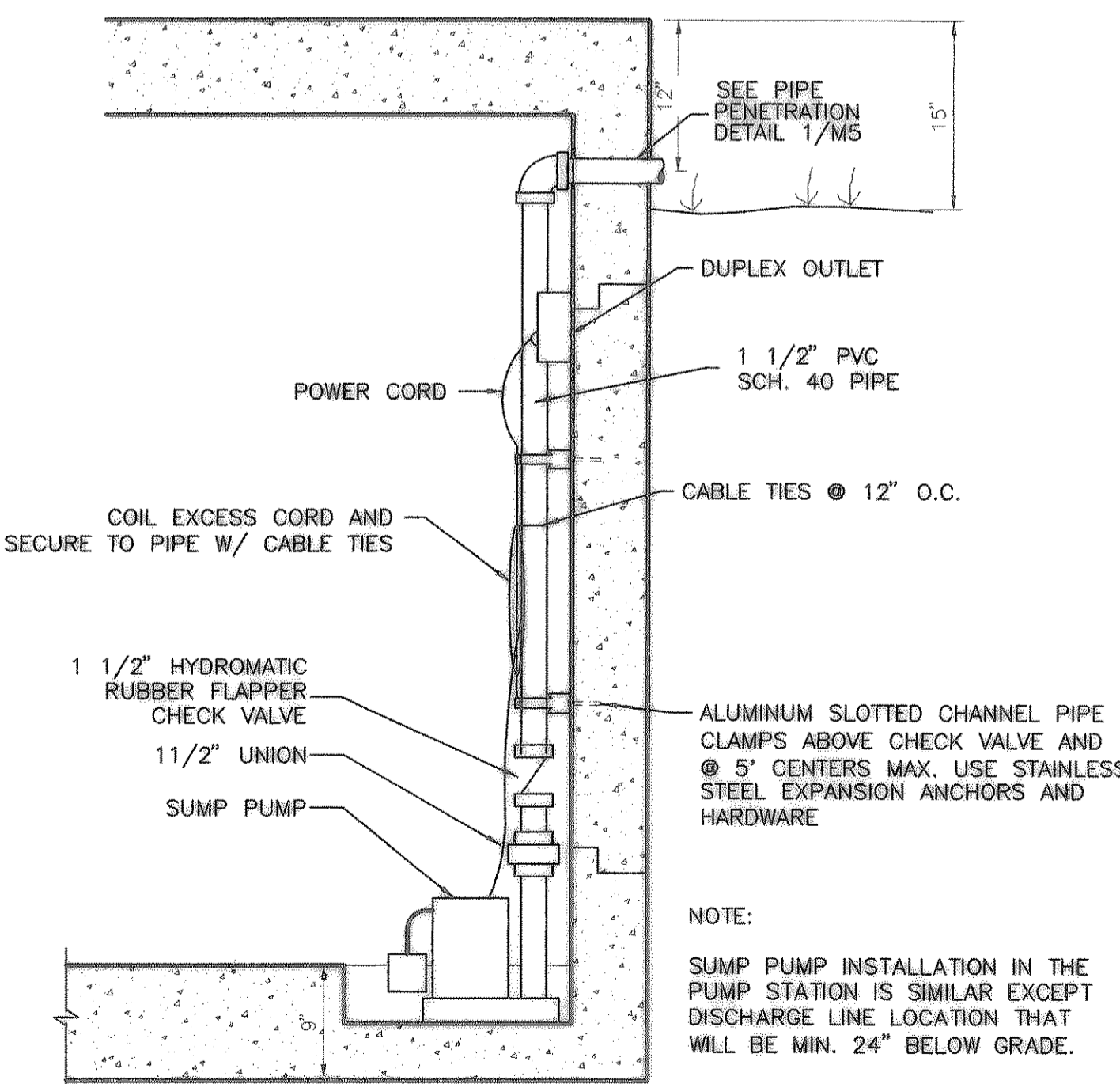
**3 CHLORINE AND NITROGEN CYLINDER SUPPORT DETAIL**  
 SCALE: 1/2"=1'-0"



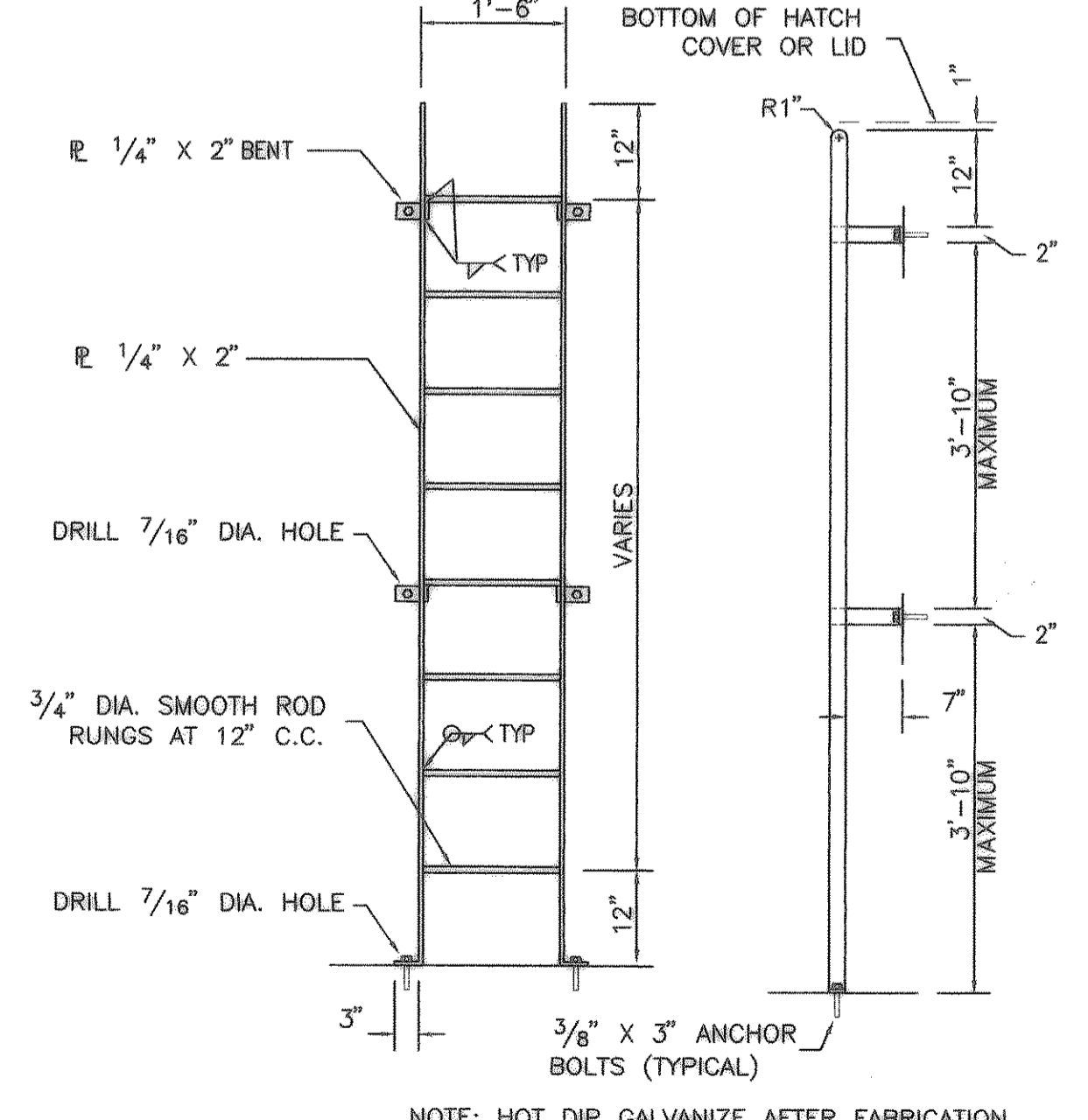
**4 PIPE SUPPORT DETAIL**  
 NO SCALE



**5 PUMP FLEXIBLE COUPLING DETAIL**  
 NO SCALE



**6 VAULT SUMP PUMP DETAIL**  
 SCALE: 1"=1'-0"



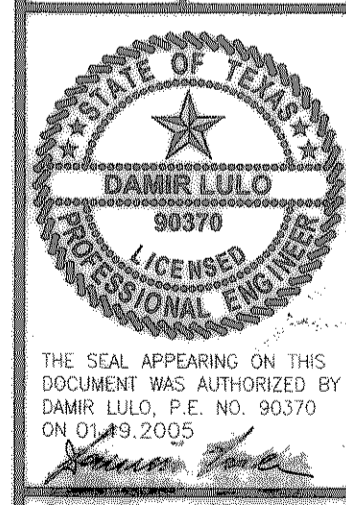
**7 LADDER DETAIL**  
 NO SCALE

**RECORD DRAWING**  
 (ALL REVISIONS ARE BASED UPON CITY AND CONTRACTOR NOTES AND COMMENTS)

NO.	DATE	REVISION	BY

**Freeman-Mullican, Inc.**  
 ENGINEERS - ARCHITECTS - PLANNERS  
 9500 FOREST LN. DALLAS, TX 75243-5055

CITY OF HEATH  
 PUMP STATION NO. 1  
**MECHANICAL DETAILS**



THE SEAL APPEARING ON THIS DOCUMENT WAS AUTHORIZED BY DAMIR LULO, P.E. NO. 90370 ON 01/13/2005.  
 SCALE: AS SHOWN  
 IF SHEET IS IN 11"x17" FORMAT, DRAWINGS ARE AT 1/2 OF NOTED SCALE.  
 PROJECT No.: 02150  
 DATE: JAN. 2005  
 DESIGNED: D.L.  
 DRAWN: FMI  
 CHECKED: J.T.M.

SHEET  
**M6**  
 TOTAL SHEETS: 35