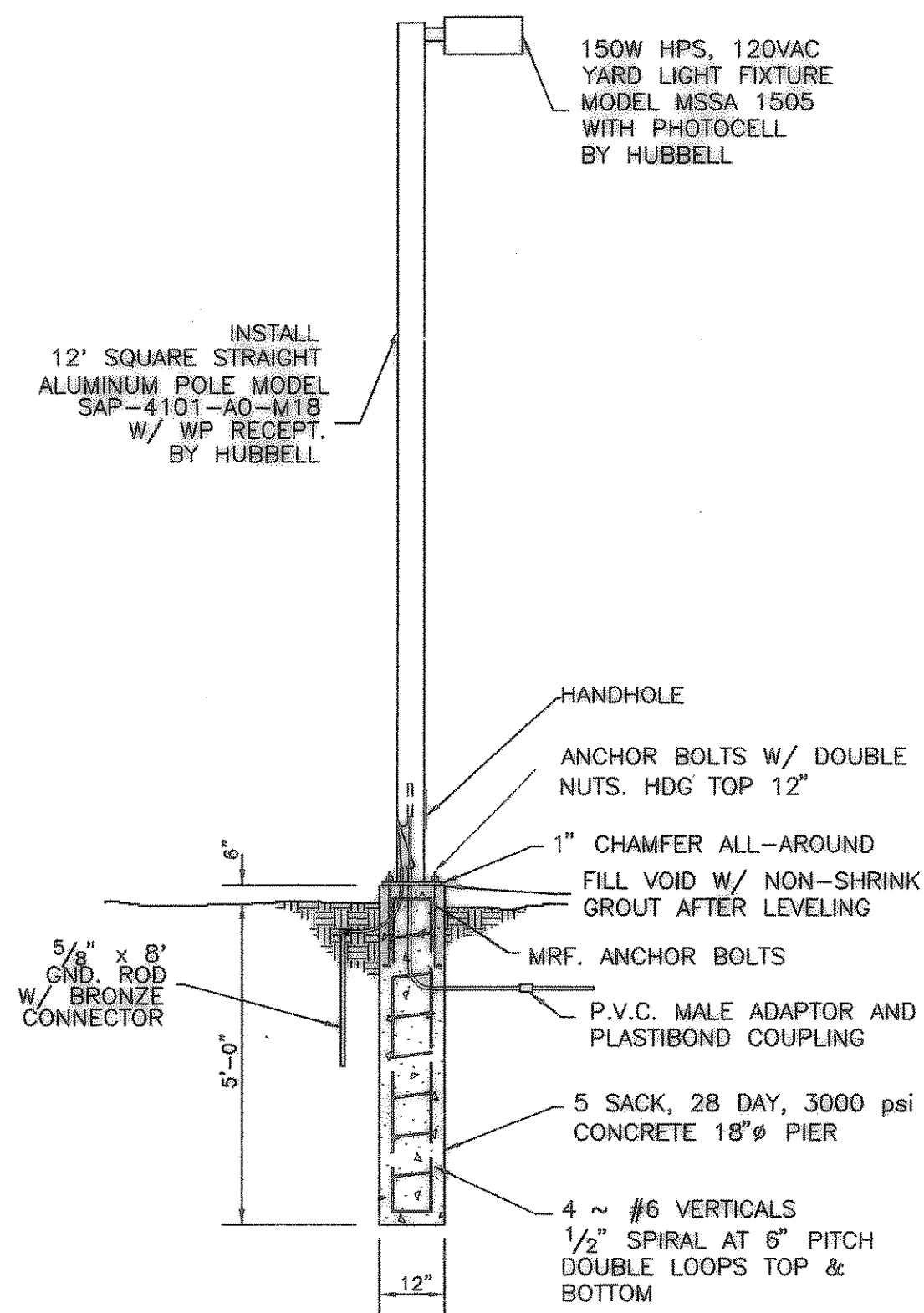


1 STREET BORING WITH ENCASEMENT PIPE

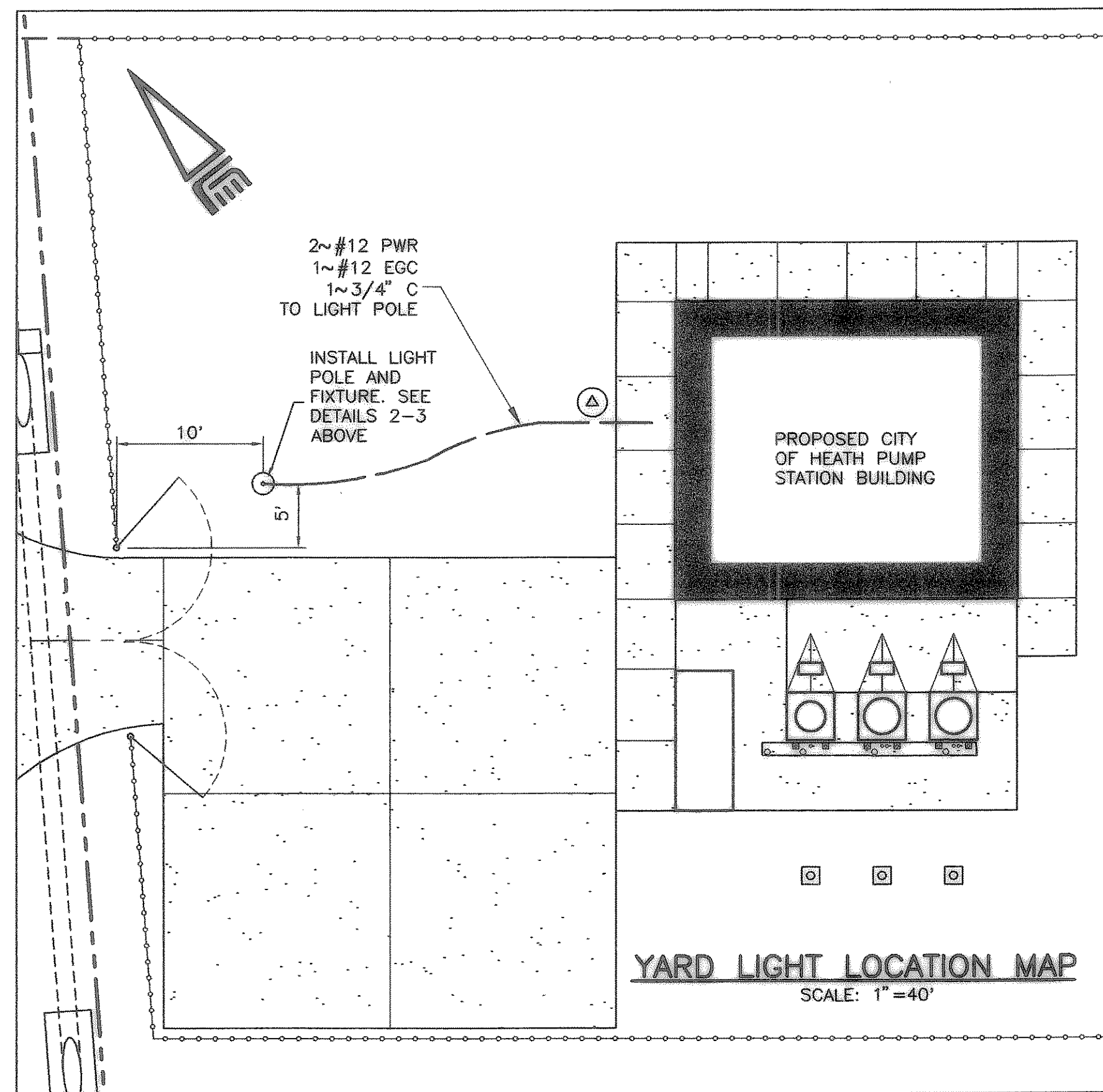
NO SCALE

- ENCASEMENT PIPE: NEW, SMOOTH STEEL PIPE, WITH WALL THK = OD/120., BITUMINOUS COATING, 35,000 PSI MIN. YIELD STRENGTH.
- CARRIER PIPE SHALL BE MADE-UP OUTSIDE THE ENCASEMENT PIPE & PUSHED THROUGH THE BORE. INSTALL RACI OR SMITH-BLAIR CASING SPACERS ACCORDING TO MFR. RECOMMENDATIONS. MAINTAIN 1" MAX. CLEARANCE BETWEEN CASING SPACERS & ENCASEMENT PIPE.
- WET BORES MAY BE USED.
- ALL VOIDS BETWEEN THE BORE WALL & CARRIER PIPE NO ENCASEMENT IS SHALL BE FILLED w/ GROUT PER ASTM C-476.
- METAL BEAM GUARD FENCE OR OTHER APPROVED PROTECTIVE DEVICES SHALL BE INSTALLED FOR THE PROTECTION OF THE TRAVELING PUBLIC.
- REVEGETATE THE PROJECT AREA ACCORDING TO TxDOT SPEC 164.
- PLACE WATER LINE MARKERS @ RIGHT-OF-WAY LINE. USE CARSONITE FLEXIBLE ROAD MARKERS w/ VINYL LETTERING: "WATER LINE CROSSING".
- CONCRETE TO BE 2000 PSI
- CONTRACTOR SHALL DETERMINE SIZE OF ENCASEMENT PIPE TO BE USED.
- WHERE CIRCUMSTANCES NECESSITE THE EXCAVATION OF A BORE PIT OR TRENCH CLOSER TO THE EDGE OF PAVEMENT THAN SET FORTH ON THIS SHEET, GUARD FENCE OR OTHER APPROVED PROTECTIVE DEVICES WILL BE INSTALLED FOR THE PROTECTION OF THE TRAVELING PUBLIC.

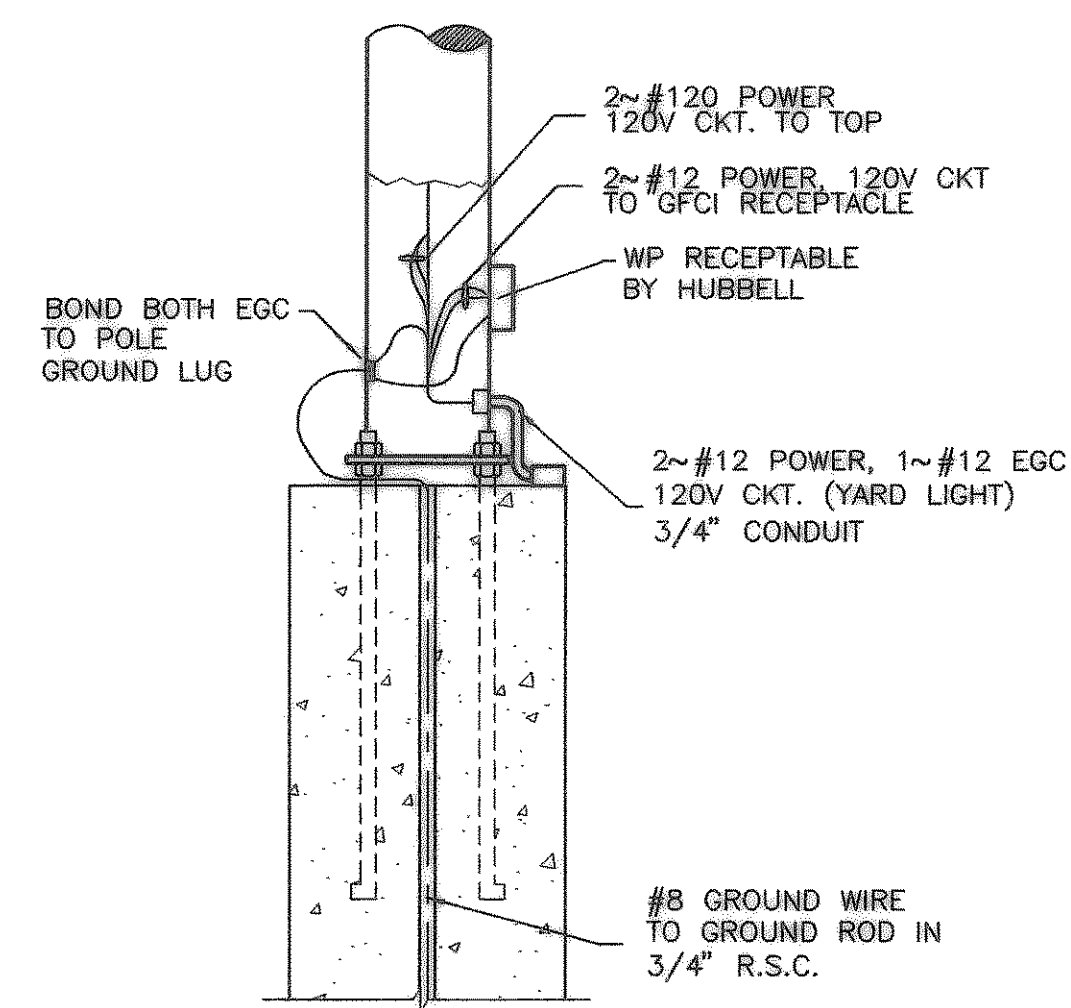


2 YARD LIGHT POLE DETAIL

NO SCALE

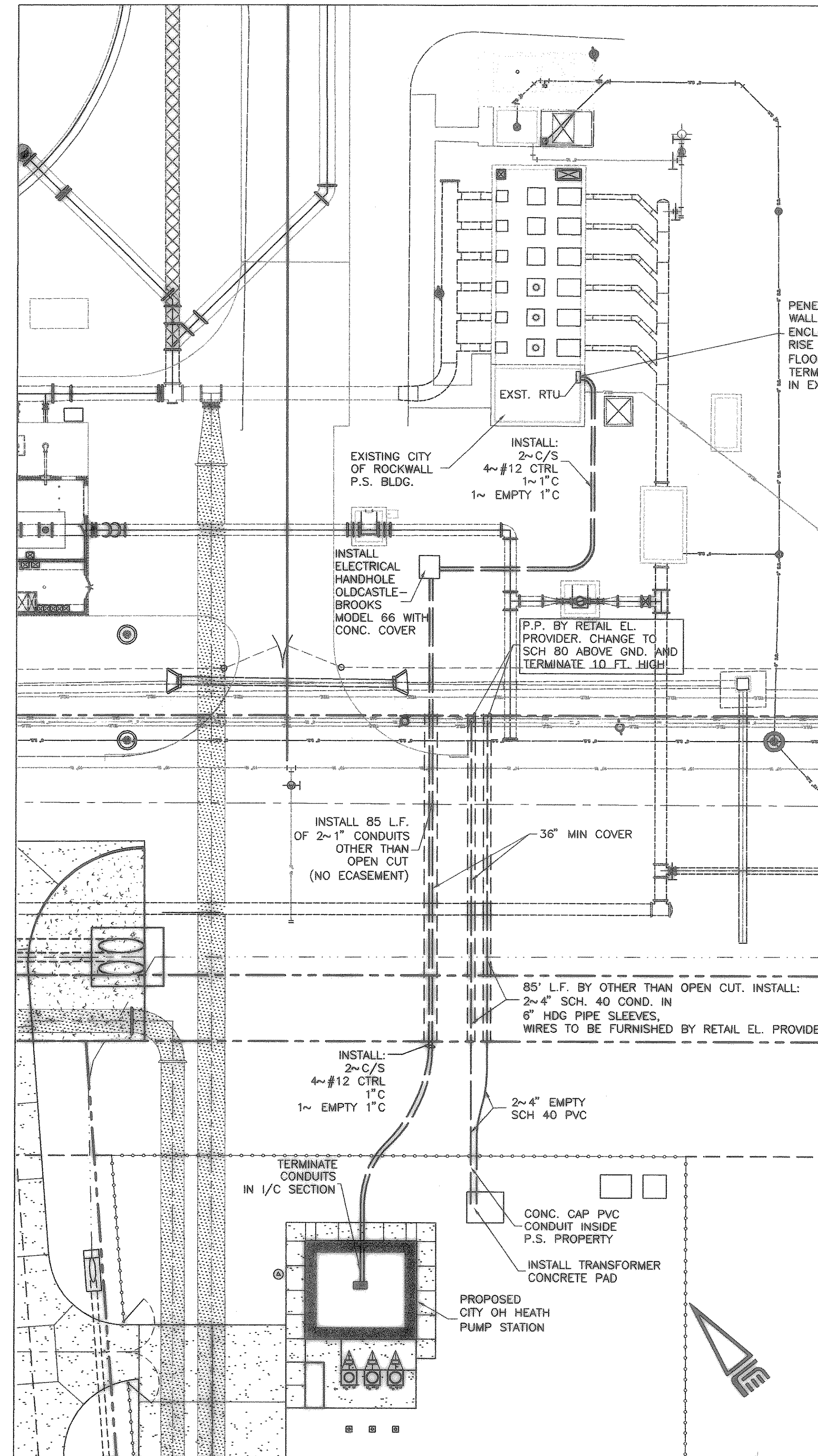


YARD LIGHT LOCATION MAP
SCALE: 1"=40'



3 YARD LIGHT ANCHORAGE DETAIL

NO SCALE



ELECTRICAL CONNECTION TO ROCKWALL PUMP STATION

SCALE: 1"=20'

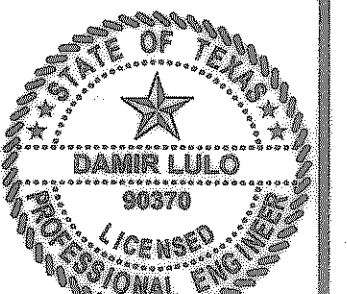
NOTE:
CONNECT TO LOW LEVEL RELAY SPARE CONTACTS INSIDE RTU PANEL. LABEL FLOW PULSE AND ANALOG SIGNAL WIRES. THESE SIGNALS SHALL BE WIRED INTO THE CITY OF ROCKWALL SCADA SYSTEM BY OTHERS.

PENETRATE P.S. BLDG. CONCRETE WALL BELOW EXISTING RTU ENCLOSURE (SEE DETAIL 10/E10) RISE UP THROUGH CONCRETE FLOOR SLAB SEE DETAIL 6/E10. TERMINATE IN EXISTING RTU ENCLOSURE.

RECORD DRAWING
(ALL REVISIONS ARE BASED UPON CITY AND CONTRACTOR NOTES AND COMMENTS)

CITY OF HEATH
PUMP STATION NO. 1

ELECTRICAL DETAILS



THE SEAL APPEARING ON THIS DOCUMENT WAS AUTHORIZED BY DAMIR LJULO, P.E. NO. 90870, ON 01/19/2005.

SCALE: AS SHOWN

IF SHEET IS IN 11"x17" FORMAT, DRAWINGS ARE AT 1/2 OF NOTED SCALE.

PROJECT No.: 02150
DATE: JAN. 2005
DESIGNED: D.L.
DRAWN: FMI
CHECKED: J.T.M.

SHEET
E11
TOTAL SHEETS: 35

NO.	DATE	REVISION	BY

Freeman-Mulligan, Inc.
ENGINEERS - ARCHITECTS - PLANNERS
9600 FOREST LN. DALLAS, TX 75243-5056