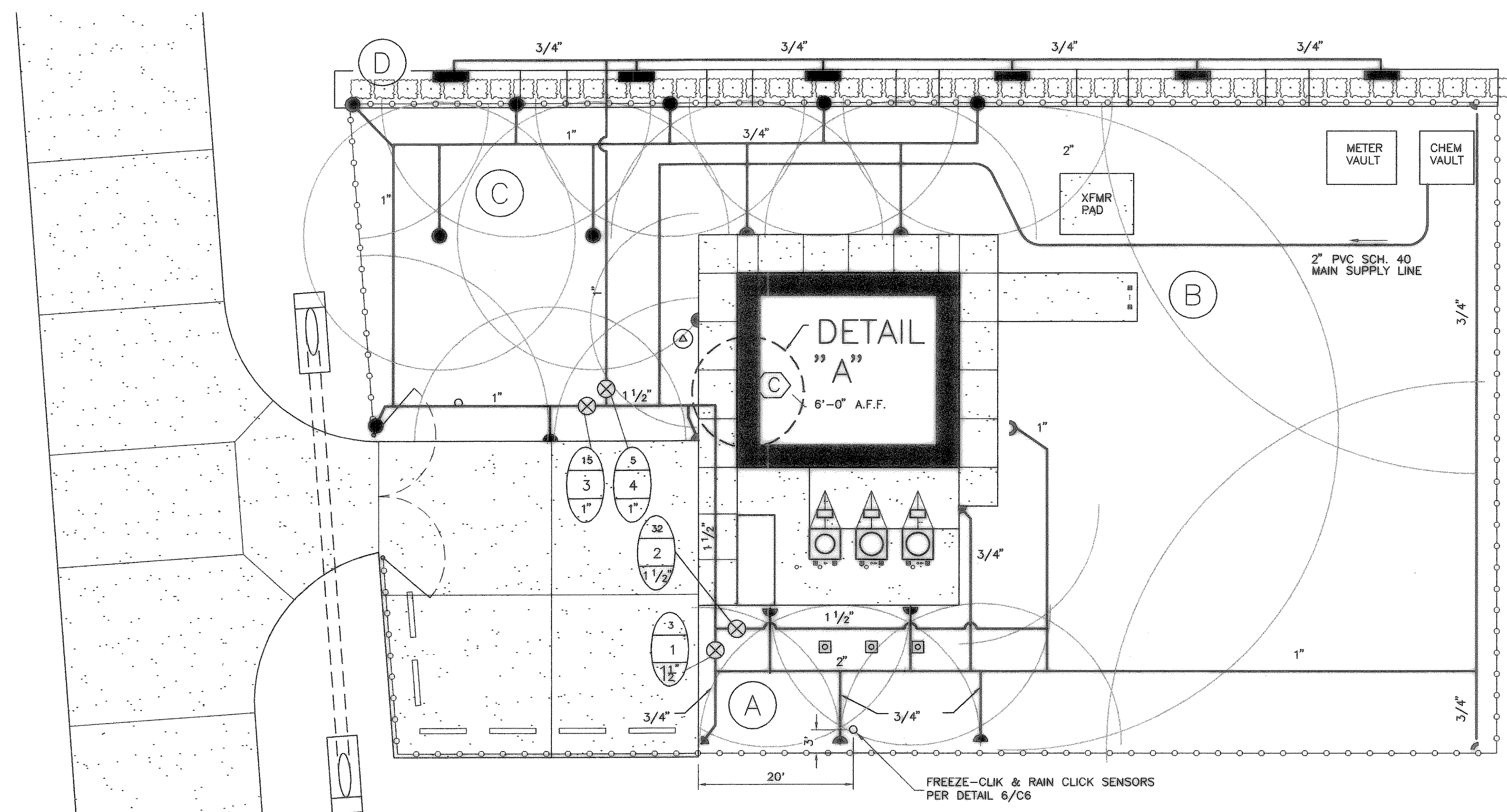


NO.	DATE	REVISION	BY



PRECIPITATION AREA	PROPOSED SPRINKLER TYPE	PRECIPITATION *	WORKING PRESSURE
(A)	PGM-1.0 (HALF) PGM-0.5 (QUARTER)	0.65 IN/HOUR	50 P.S.I.
(B)	I-40-43 (HALF) I-40-40 (QUARTER)	0.65 IN/HOUR	50 P.S.I.
(C)	PGM-2.0 (FULL) PGM-1.0 (HALF) PGM-0.5 (QUARTER)	0.62 IN/HOUR	50 P.S.I.
(D)	SHURB NOZZLE W/ SS-530 HEAD	0.86 IN/HOUR	30 P.S.I.

* PRECIPITATION RATES ARE BASED ON HUNTER ROTOR RATING AND HALF CIRCLE OPERATION. CONTRACTOR SHALL ACHIEVE UNIFORMITY IN EACH LABELED ZONE VIA "MATCHED PRECIPITATION," I.E. BY SELECTING DIFFERENT SIZE NOZZLES FOR DIFFERENT SIZE OF ARC AND USING UP TO 25% RADIUS ADJUSTMENT ON THE NOZZLE.

IRRIGATION NOTES:

1. THE IRRIGATION SYSTEM HAS BEEN DESIGNED TO OPERATE WITH A STATIC WATER PRESSURE OF 50 PSI. THE CONTRACTOR SHALL TAKE A PRESSURE READING PRIOR TO BEGINNING CONSTRUCTION. IF THE STATIC WATER PRESSURE IS LESS THAN 50 PSI, THE CONTRACTOR WILL NOTIFY THE ENGINEER AND AWAIT FURTHER INSTRUCTIONS. THE CONTRACTOR SHALL NOT WILLFULLY INSTALL THE IRRIGATION SYSTEM AS SHOWN ON THE DRAWINGS WHEN IT IS OBVIOUS IN THE FIELD THAT OBSTRUCTIONS, GRADE DIFFERENCES OR DISCREPANCIES IN EQUIPMENT USAGE, AREA DIMENSION OR STATIC WATER PRESSURE EXIST THAT MAY NOT HAVE BEEN CONSIDERED IN THE DESIGN. SUCH ISSUES SHALL BE BROUGHT TO THE ATTENTION OF THE ENGINEER. IN THE EVENT THAT THE NOTIFICATION IS NOT PERFORMED, THE CONTRACTOR SHALL ASSUME FULL RESPONSIBILITY FOR ANY REVISIONS NEEDED AT NO ADDITION COST TO THE OWNER.
2. IRRIGATION CONTRACTOR SHALL COORDINATE SPRINKLER PIPING INSTALLATION THAT IS LOCATED UNDER CONCRETE SIDEWALK OR SLABS WITH GENERAL CONTRACTOR. SPRINKLER PIPING SHALL BE INSTALLED PRIOR TO CONCRETE WORK.
3. HEAD LOCATIONS ARE APPROXIMATE. HEAD STAKING TO BE APPROVED BY THE OWNER'S REPRESENTATIVE BEFORE PROCEEDING. ADJUST HEAD AND NOZZLES TO PROVIDE 100% COVERAGE IN THE AREAS SHOWN. ANY HEADS LOCATED BY A SIDEWALK OR CURB MUST BE LOCATED 6" FROM THE CONCRETE.
4. PIPING IS DIAGRAMMATIC. AVOID ALL CONFLICTS WITH EXISTING TREES AND OTHER SITE FEATURES. CROSS FITTINGS WILL NOT BE USED FOR THE INSTALLATION OF THIS SYSTEM.
5. ALL MAINLINE PIPING SHALL BE BURIED WITH A MINIMUM 18" OF COVER. ALL LATERAL LINE PIPING DOWNSTREAM OF THE REMOTE CONTROL VALVES SHALL HAVE A MINIMUM COVER OF 12".

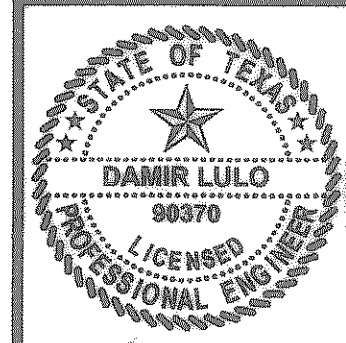
6. UNLESS OTHERWISE INDICATED, PIPING TO A SINGLE SPRAY HEAD SHALL BE 3/4" PVC CL-315.
7. PROVIDE AND INSTALL AS PER MANUFACTURER'S INSTRUCTIONS A MINI-CLIK RAIN SENSOR AND FREEZE-CLICK SENSOR BY HUNTER INDUSTRIES. CONTRACTOR WILL PROVIDE AND INSTALL A 3/4" RIGID CONDUIT FOR WIRES.
8. ALL WIRING FROM THE IRRIGATION CONTROLLER TO THE REMOTE CONTROL VALVES SHALL BE UF-14/1 DIRECT BURIAL CABLE. ALL WIRE SPLICES SHALL BE MADE IN VALVE BOXES ONLY, USING APPROVED CONNECTORS. THE CONTRACTOR WILL INSTALL ADDITIONAL WIRES FROM THE CONTROLLER LOCATION TO THE AREAS NOTES ON THE PLAN.
9. THE CONTRACTOR WILL PROVIDE TO THE CITY OF HEATH A FINAL "AS-BUILT" DRAWING OF THE IRRIGATION SYSTEM. THIS DRAWING WILL BE DRAWN ON A MYLAR BASE MAP. THIS DRAWING SHALL BE SUBMITTED THE DAY OF FINAL ACCEPTANCE OF THE PROJECT.
10. ALL IRRIGATION INSTALLATION SHALL CONFORM TO ALL STATE & LOCAL CODES AND REGULATIONS.
11. REFER TO IRRIGATION DETAILS SHEET C7.

LEGEND

	POP-UP ROTOR, HUNTER I-20-1.5SR, I-20-1SR OR PGM SER. 155		CONTROL VALVE HUNTER TYPE ICV
	POP-UP ROTOR, HUNTER I-40-43		CONTROLLER HUNTER EC-400 SERIES
	STRIP 12" POP-UP SPRAY TYPE SRS WITH SS-530 NOZZLE (@ 30 P.S.I.)		PRECIPITATION AREA DESIGNATION
	62 GALLONS PER MINUTE 4 1 1/2" VALVE SIZE		

VALVE DESIGNATION GUIDE

CITY OF HEATH
 PUMP STATION NO. 1
 IRRIGATION PLAN



THE SEAL APPEARING ON THIS DOCUMENT WAS AUTHORIZED BY DARRYL LULO, P.E. NO. 90370 ON 04/09/2004.

SCALE: 1"=10'

IF SHEET IS IN 11"x17" FORMAT, DRAWINGS ARE AT 1/2 OF NOTED SCALE.

PROJECT No.: 02150
 DATE: APRIL 2004
 DESIGNED: DL
 DRAWN: FMI
 CHECKED: JTM

SHEET
C6
 TOTAL SHEETS: 35