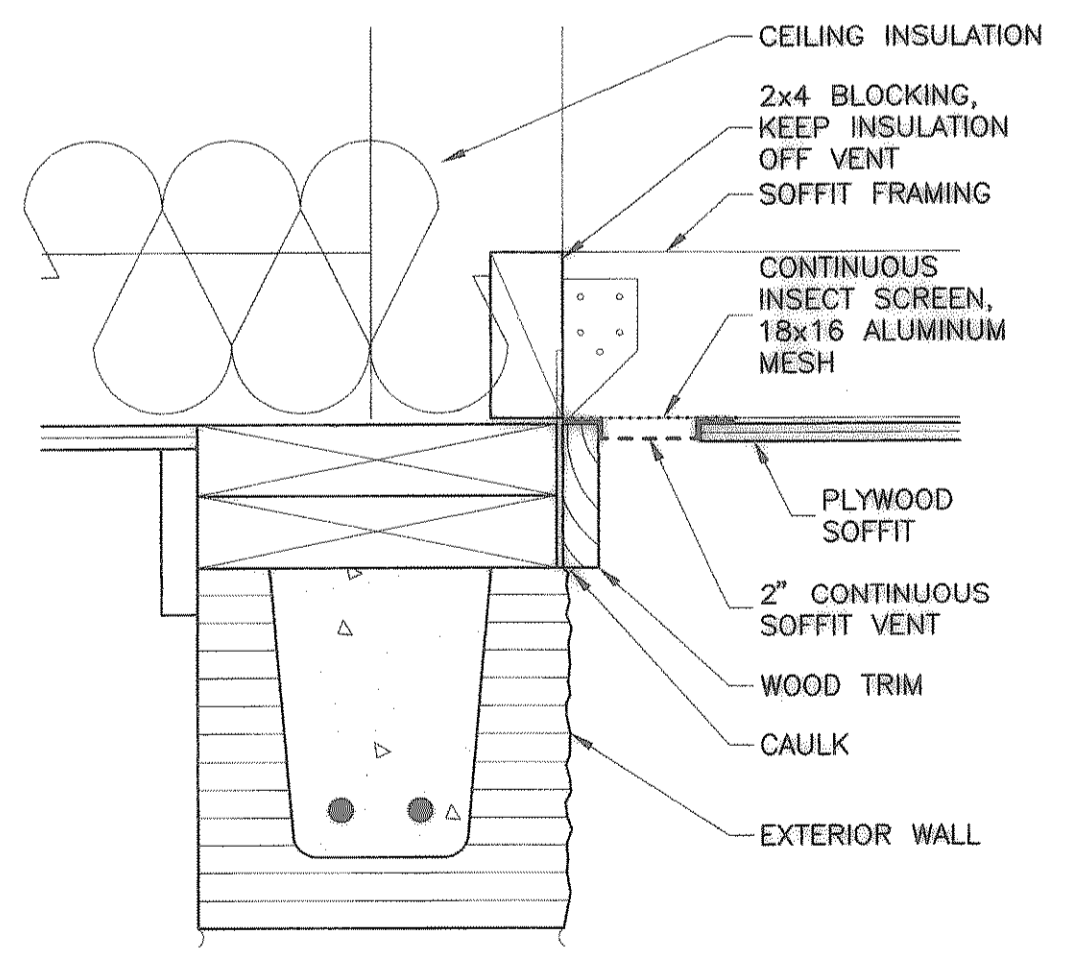


1 BUILDING SECTION
3/8"=1'-0"



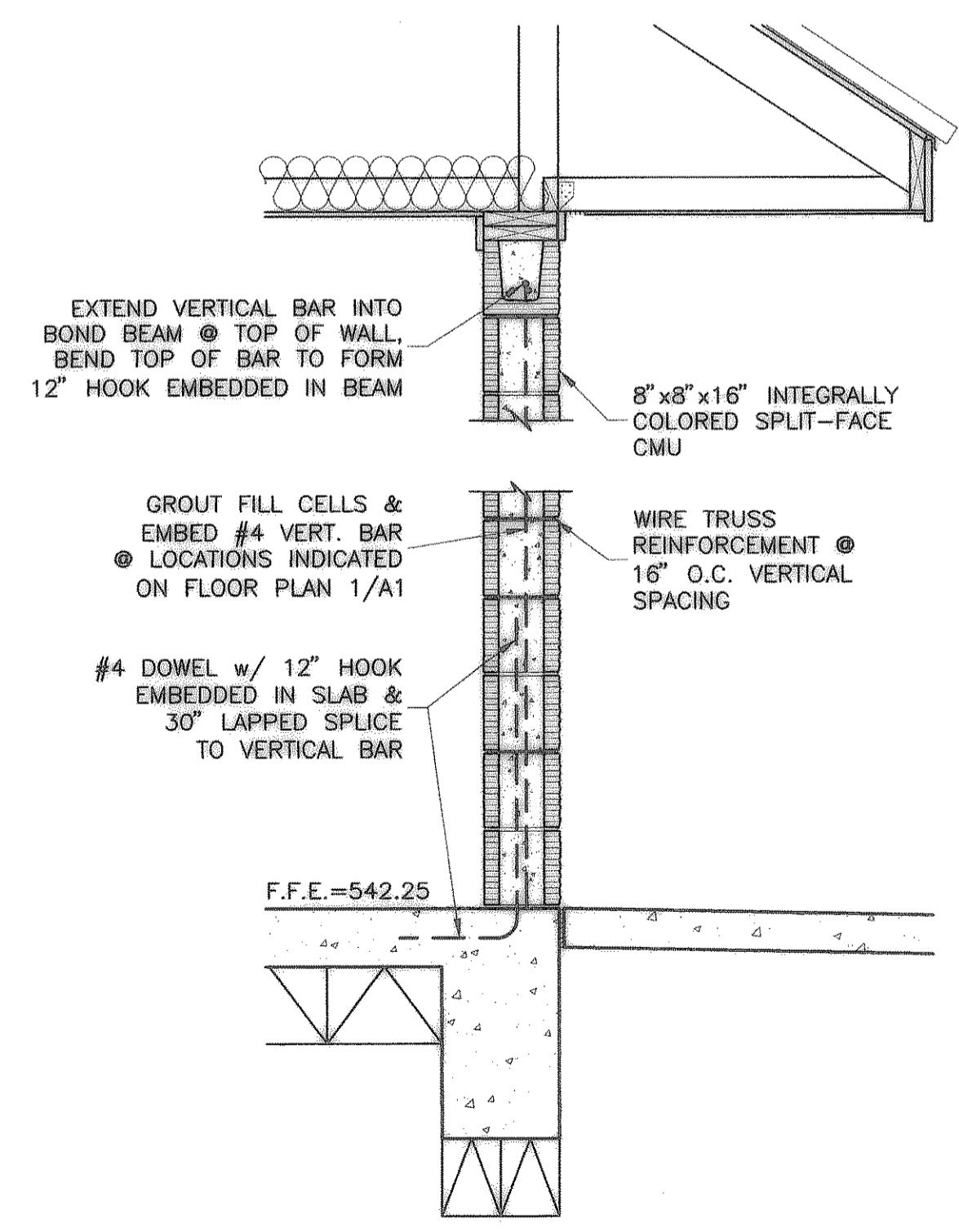
NOTES:

INSECT SCREEN SHALL BE BRONZE OR CLEAR ANODIZED ALUMINUM. COLOR SELECTED BY ENGINEER.

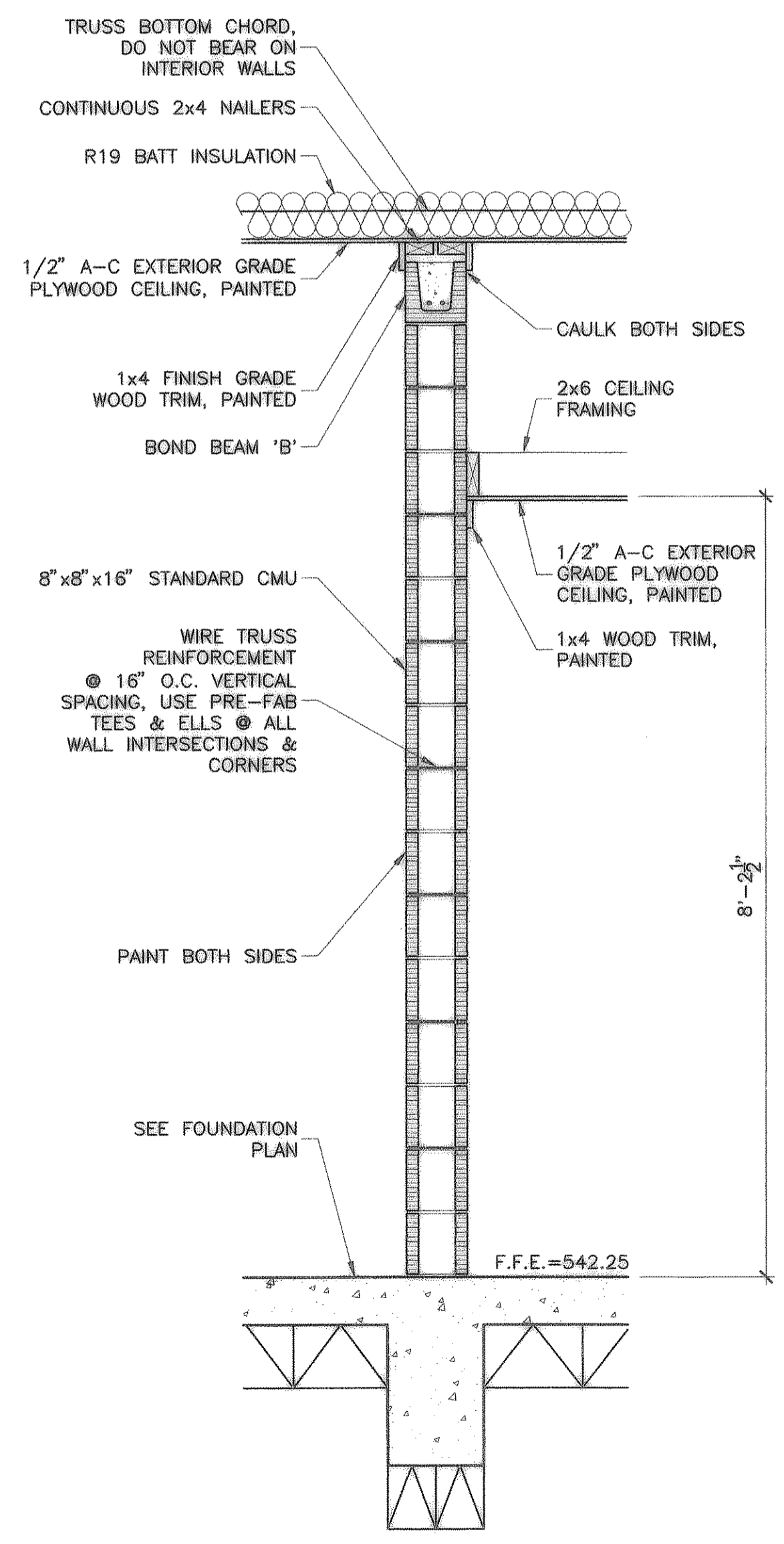
INSTALL INSECT SCREEN AND SOFFIT VENT TO UNDERLAP PLYWOOD SOFFIT AND WOOD TRIM. ATTACH TO EACH SOFFIT FRAMING MEMBER. USE LONGEST AVAILABLE PIECES TO MINIMIZE JOINTS.

MITER SOFFIT VENTS AT CORNERS. JOIN BUTT AND MITER JOINTS WITH CONNECTOR CLIPS FURNISHED BY VENT MANUFACTURER.

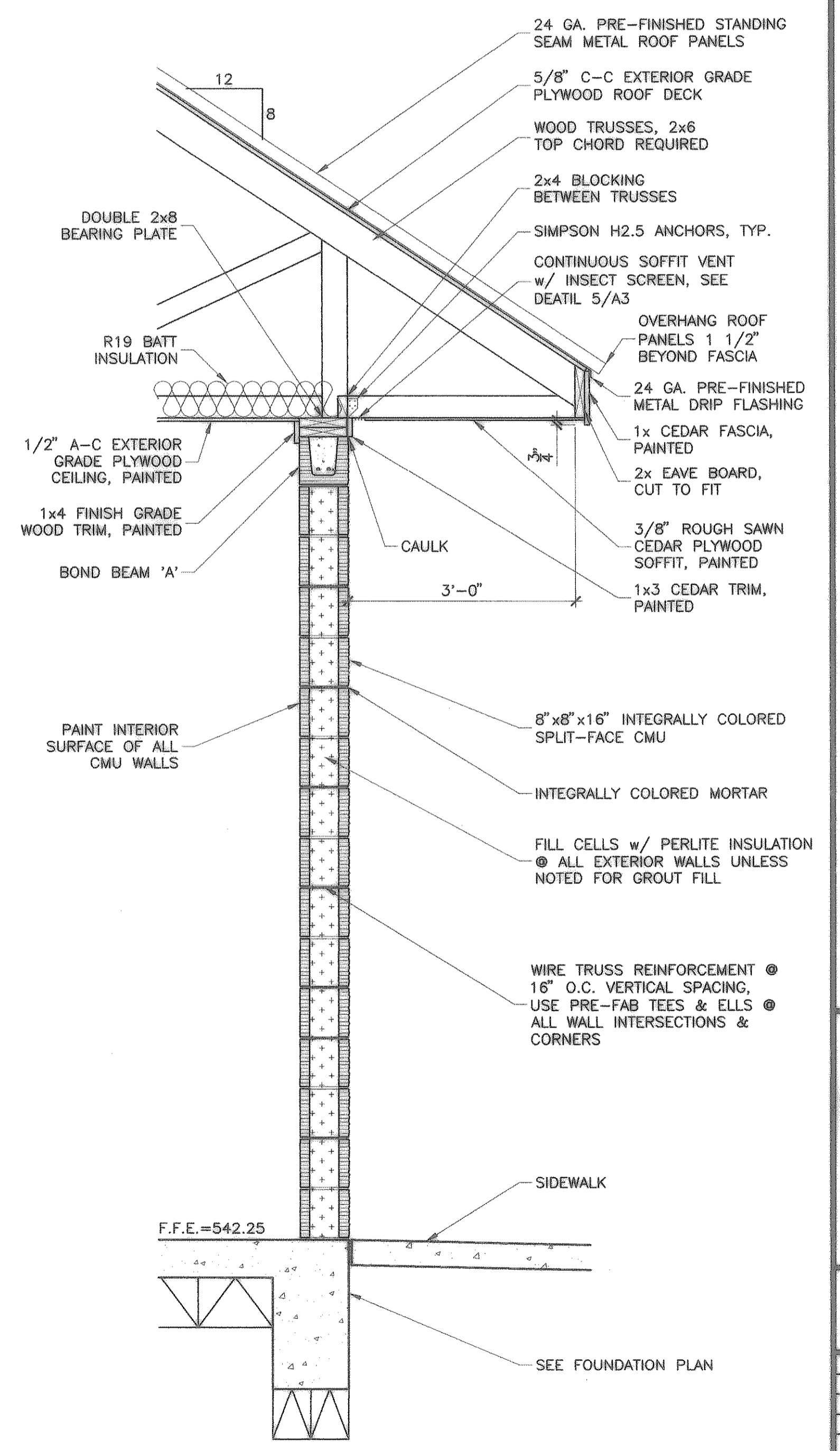
5 SOFFIT VENT
3"=1'-0"



2 WALL SECTION
3/4"=1'-0"



3 WALL SECTION
3/4"=1'-0"



4 WALL SECTION
3/4"=1'-0"

RECORD DRAWING
(ALL REVISIONS ARE BASED UPON CITY AND CONTRACTOR NOTES AND COMMENTS)

No.	DATE	REVISION	BY

CITY OF HEATH
PUMP STATION NO. 1
PUMP HOUSE SECTIONS

REGISTERED ARCHITECT
JOHN D. GATTS, AIA.
STATE OF TEXAS

IF SHEET IS IN 11"x17" FORMAT, DRAWINGS ARE AT 1/2" OF NOTED SCALE.

SCALE: AS NOTED

PROJECT No.: 02150
DATE: JAN. 2005
DESIGNED: JDC
DRAWN: FMI
CHECKED: JDC

SHEET
A3
TOTAL SHEETS: 35

Freeman-Mulligan, Inc.
ENGINEERS - ARCHITECTS - PLANNERS
9500 FOREST LN. DALLAS, TX. 214.603.0555