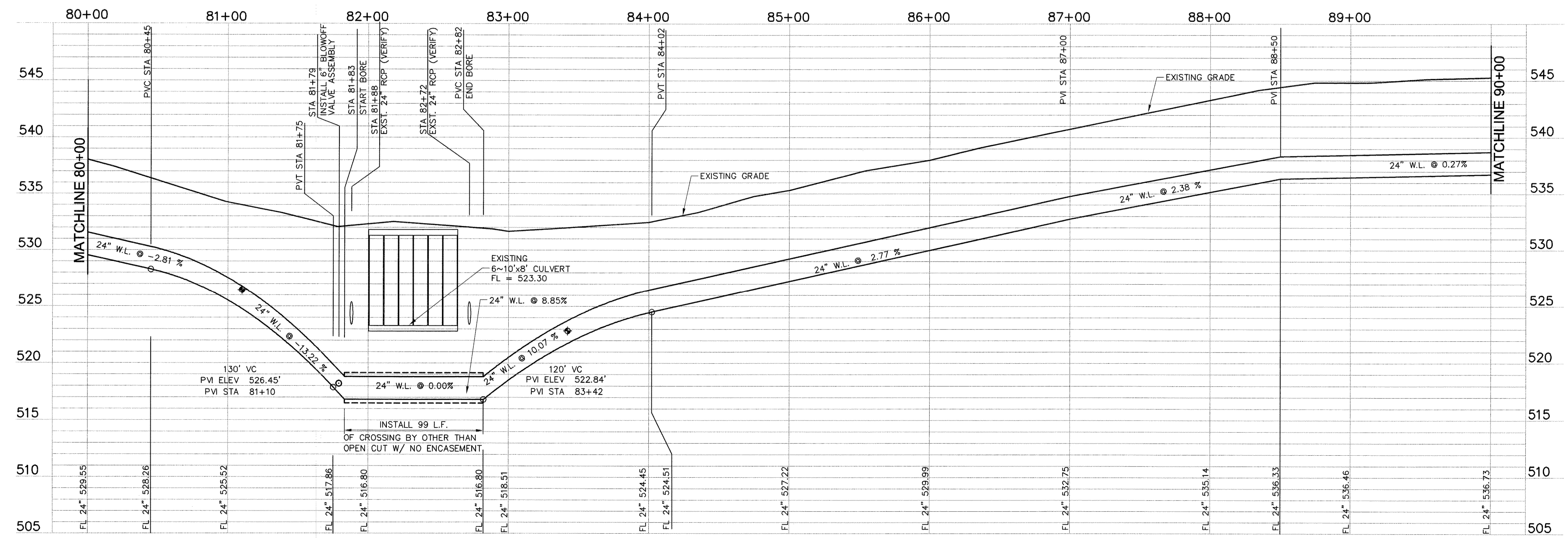


TOWNSEND DR.
CONCRETE (VARIABLE WIDTH R.O.W)

BM #1
SQUARE CUT IN CENTER OF
HEADWALL (2~10'X10' BOX
CULVERT), 1400 FT ± EAST OF
S.H. 205 AND 35 FT. ± SOUTH
OF CENTERLINE OF FM 276.
ELEVATION: 528.02

BM #2
SQUARE CUT IN TOP OF
HEADWALL ON EAST SIDE OF
TOWNSEND DRIVE 30 FT.± NORTH
FROM CENTERLINE OF ACCESS
GATE FOR EASTSIDE PUMP
STATION (CITY OR ROCKWALL).
ELEVATION: 540.14



RECORD DRAWING
(ALL REVISIONS ARE BASED UPON CITY AND CONTRACTOR NOTES AND COMMENTS)

NO.	DATE	REVISION	BY
1	4/20/04	REVISED WATER LINE ALIGNMENT	DL
2	3/29/04	N/E COORDINATES ADDED	DL
3	2/20/04	CURVE DATA, STA. PVI ELEV. CORRECTED	DL

CITY OF HEATH
24" WATER TRANSMISSION LINE - PROJECT "B"
STA 80+00 TO 90+00



THE SEAL APPEARING ON THIS DOCUMENT WAS AUTHORIZED BY DAMIR LULO, P.E. NO. 90370 ON 1/12/04

SCALE: 1"=40'
1"=5'
IF SHEET IS IN 11"X17" FORMAT, DRAWINGS ARE AT 1/2 OF NOTED SCALE.
PROJECT No.: 02150
DATE: JAN 2004
DESIGNED: DL
DRAWN: FMI
CHECKED: JTM

SHEET
B9
TOTAL SHEETS: 27

Freeman-Mulligan, Inc.
ENGINEERS, ARCHITECTS - PLANNERS
9800 FOREST LN. DALLAS, TX 214.503.6555