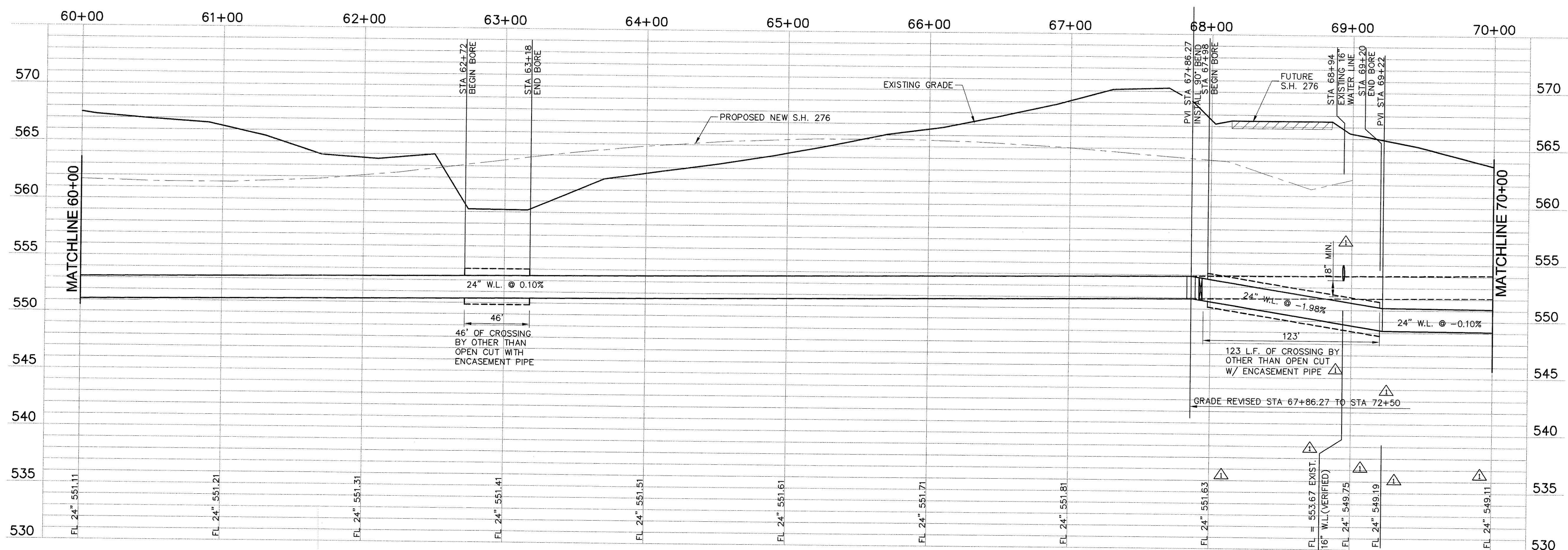


IMPORTANT NOTE: (SEGMENTS FROM 69+00 TO 77+25)  
ALL DISTURBED LAWN AREAS, TREES, SIDEWALKS SHALL  
BE FULLY RESTORED TO PREVIOUS CONDITIONS, BASED  
ON THE CITY OF ROCKWALL STANDARDS.

BM #1  
SQUARE CUT IN CENTER OF  
HEADWALL (2-10'X10' BOX  
CULVERT), 1400 FT. ± EAST OF  
S.H. 205 AND 35 FT. ± SOUTH  
OF CENTERLINE OF FM 276.  
ELEVATION: 528.02

BM #2  
SQUARE CUT IN TOP OF  
HEADWALL ON EAST SIDE OF  
TOWNSEND DRIVE 30 FT. ± NORTH  
FROM CENTERLINE OF ACCESS  
GATE FOR EASTSIDE PUMP  
STATION (CITY OR ROCKWALL).  
ELEVATION: 540.14



RECORD DRAWING  
(ALL REVISIONS ARE BASED UPON CITY AND  
CONTRACTOR NOTES AND COMMENTS)

| NO. | DATE    | REVISION                | BY |
|-----|---------|-------------------------|----|
| 1   | 6/11/04 | AIR RELEASE CONN. MOVED | DL |

**Freeman-Mulligan, Inc.**  
ENGINEERS - ARCHITECTS - PLANNERS  
8600 FOREST LN., DALLAS, TX 75243-6886

CITY OF HEATH  
24" WATER TRANSMISSION LINE - PROJECT "B"  
STA 60+00 TO 70+00



THE SEAL APPEARING ON THIS  
DOCUMENT WAS AUTHORIZED BY  
DAMIR LULO, P.E. NO. 90370  
ON 1/12/04

SCALE: 1"=40'  
1"=5'  
IF SHEET IS IN 11"x17"  
FORMAT, DRAWINGS ARE AT  
1/2"=1' NOTED SCALE.

PROJECT No.: 02150  
DATE: JAN 2004  
DESIGNED: DL  
DRAWN: FMI  
CHECKED: JTM

SHEET  
**B7**  
TOTAL SHEETS: 27