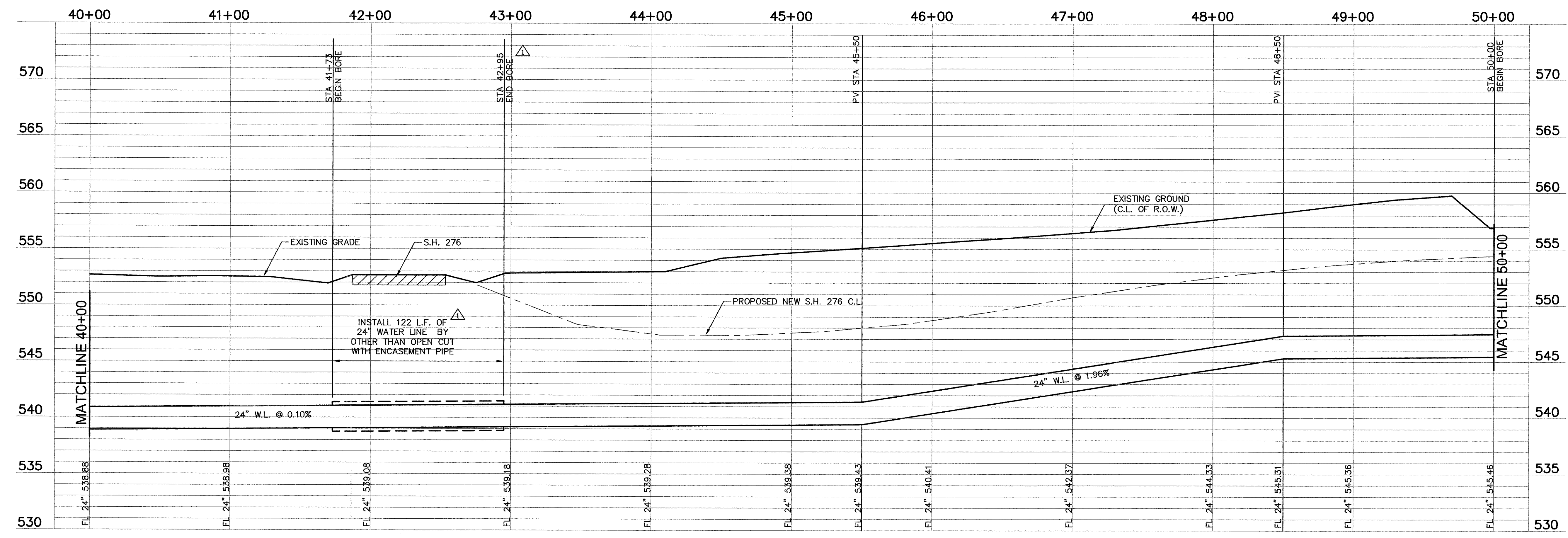


- ① CONTRACTOR MAY CAREFULLY MOVE THE EXISTING TELEPHONE CABLE ALONG S.H. 205 WEST R.O.W. LINE IF IT INTERFERES WITH THE WATER LINE PLACEMENT.
- ② TO AVOID CLEARANCE PROBLEM WITH OTHER UNDERGROUND UTILITIES, THE NEW WATER LINE ALIGNMENT IS GENERALLY SHOWN TO BE 7 FT. AWAY FROM THE WEST R.O.W. OF S.H. 205. HOWEVER, THE CONTRACTOR MAY SELECT A DIFFERENT FIXED ALIGNMENT WITHIN 3-10 FT. FROM R.O.W LINE PER THE TxDOT PERMIT IN THE APPENDIX.

BM #1
 SQUARE CUT IN CENTER OF HEADWALL (2~10'X10' BOX CULVERT), 1400 FT ± EAST OF S.H. 205 AND 35 FT. ± SOUTH OF CENTERLINE OF FM 276.
 ELEVATION: 528.02

BM #2
 SQUARE CUT IN TOP OF HEADWALL ON EAST SIDE OF TOWNSEND DRIVE 30 FT. ± NORTH FROM CENTERLINE OF ACCESS GATE FOR EASTSIDE PUMP STATION (CITY OR ROCKWALL).
 ELEVATION: 540.14

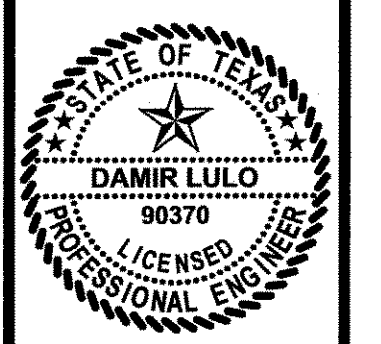


RECORD DRAWING
 (ALL REVISIONS ARE BASED UPON CITY AND CONTRACTOR NOTES AND COMMENTS)

No.	DATE	REVISION	BY
1	2.27.04	CHANGE ORDER NO. 1	A.C.
2	2.27.04	ANGLE CORRECTED	A.C.
3	2.27.04	ADDENDUM NO. 1	A.C.

FREEMAN-MULLICAN, INC.
 ENGINEERS - ARCHITECTS - PLANNERS
 9500 FOREST LN. DALLAS, TX 75243-5055

CITY OF HEATH
 24" WATER TRANSMISSION LINE - PROJECT "B"
 STA 40+00 TO 50+00



THE SEAL APPEARING ON THIS DOCUMENT WAS AUTHORIZED BY DAMIR LULO, P.E. NO. 90370 ON 1/12/04

SCALE: 1"=40'
 1"=5'
 IF SHEET IS IN 11"x17" FORMAT, DRAWINGS ARE AT 1/2" OF NOTED SCALE.
 PROJECT No.: 02150
 DATE: JAN 2004
 DESIGNED: DL
 DRAWN: FMI
 CHECKED: JTM

SHEET
B5
 TOTAL SHEETS: 27