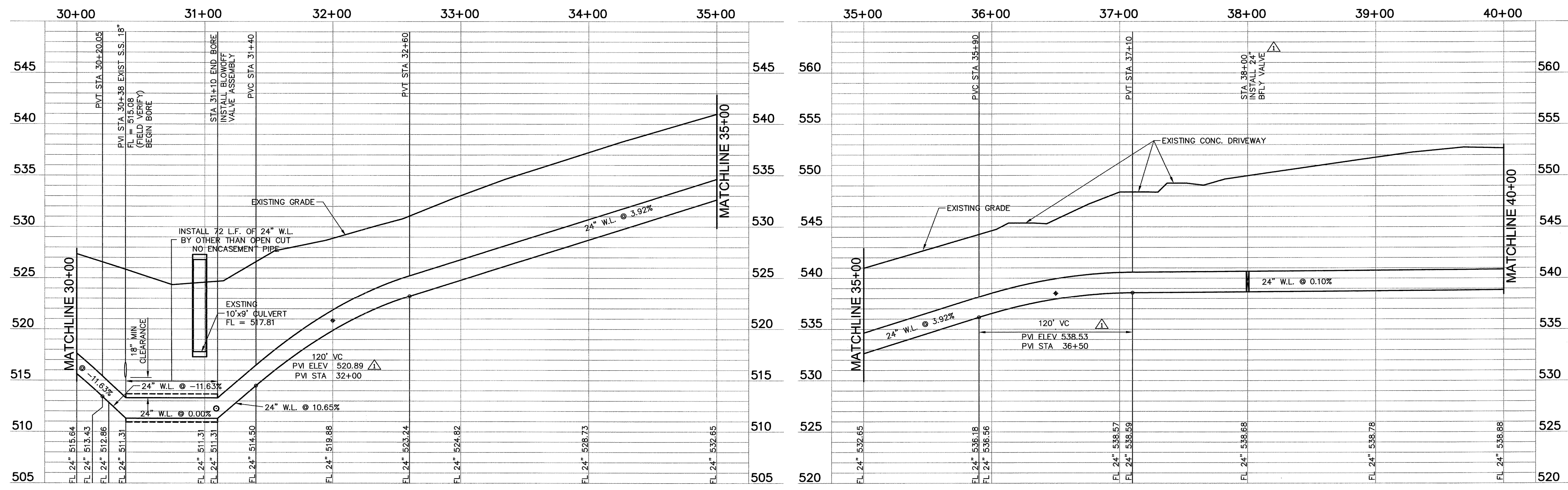


- ① CONTRACTOR MAY CAREFULLY MOVE THE EXISTING TELEPHONE CABLE ALONG S.H. 205 WEST R.O.W. LINE IF IT INTERFERES WITH THE WATER LINE PLACEMENT.
- ② TO AVOID CLEARANCE PROBLEM WITH OTHER UNDERGROUND UTILITIES, THE NEW WATER LINE ALIGNMENT IS GENERALLY SHOWN TO BE 7 FT. AWAY FROM THE WEST R.O.W. OF S.H. 205. HOWEVER, THE CONTRACTOR MAY SELECT A DIFFERENT FIXED ALIGNMENT WITHIN 3-10 FT. FROM R.O.W LINE PER THE TXDOT PERMIT IN THE APPENDIX.

CONTROL POINT #1  
 TXDOT GPS MONUMENT (ALUMINUM CAP) #D1990033 LOCATED ON THE WEST SIDE OF S.H. 205 SOUTH FROM INTERSECTION WITH SIDS ROAD, 3 FT ± EAST FROM TXDOT PLASTIC TAG THAT MARKS THIS MONUMENT. CAP IS BURIED 3"-4".  
 N: 7016017.48  
 E: 2599821.96  
 ELEVATION: 551.10

BM #1  
 SQUARE CUT IN CENTER OF HEADWALL (2~10'X10' BOX CULVERT), 1400 FT ± EAST OF S.H. 205 AND 35 FT. ± SOUTH OF CENTERLINE OF FM 276.  
 ELEVATION: 528.02

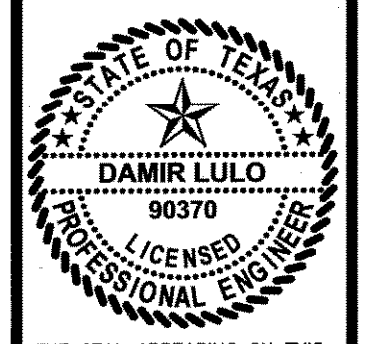
BM #2  
 SQUARE CUT IN TOP OF HEADWALL ON EAST SIDE OF TOWNSEND DRIVE 30 FT. ± NORTH FROM CENTERLINE OF ACCESS GATE FOR EASTSIDE PUMP STATION (CITY OR ROCKWALL).  
 ELEVATION: 540.14



RECORD DRAWING  
 (ALL REVISIONS ARE BASED UPON CITY AND CONTRACTOR NOTES AND COMMENTS)

No.	DATE	REVISION	BY
1	2/27/04	PVI ELEV. CORRECTED	A.C.
2	2/27/04	APPENDIX NO. 1	A.C.

CITY OF HEATH  
 24" WATER TRANSMISSION LINE - PROJECT "B"  
 STA 30+00 TO 40+00



THE SEAL APPEARING ON THIS DOCUMENT WAS AUTHORIZED BY DAMIR LULO, P.E. NO. 90370 ON 1/12/04

SCALE: 1"=40'  
 1"=5'  
 IF SHEET IS IN 11"x17" FORMAT, DRAWINGS ARE AT 1/2 OF NOTED SCALE.  
 PROJECT No.: 02150  
 DATE: JAN 2004  
 DESIGNED: DL  
 DRAWN: FMI  
 CHECKED: JTM

SHEET  
**B4**  
 TOTAL SHEETS: 27

**FREEMAN-MILLICAN, Inc.**  
 ENGINEERS - ARCHITECTS - PLANNERS  
 9600 FOREST LN. DALLAS, TX 75243-5055  
 214.503.0565