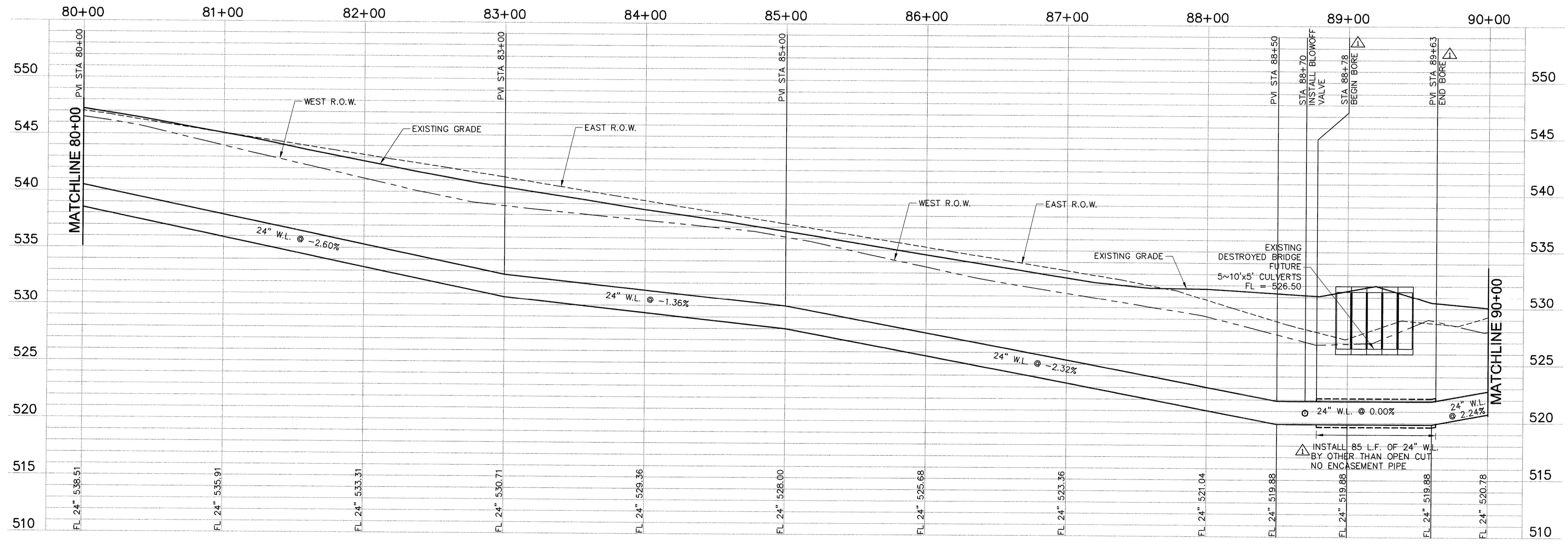


BM #1
 SQUARE CUT IN CENTER OF HEADWALL (2~10'x10' BOX CULVERT), 1400 FT ± EAST OF S.H. 205 AND 35 FT. ± SOUTH OF CENTERLINE OF FM 276.
 ELEVATION: 528.02

BM #2
 SQUARE CUT IN TOP OF HEADWALL ON EAST SIDE OF TOWNSEND DRIVE 30 FT. ± NORTH FROM CENTERLINE OF ACCESS GATE FOR EASTSIDE PUMP STATION (CITY OR ROCKWALL).
 ELEVATION: 540.14

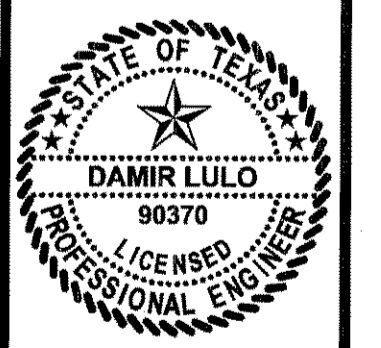


INSTALL 85 L.F. OF 24" W.L. BY OTHER THAN OPEN CUT NO ENCASEMENT PIPE

RECORD DRAWING
 (ALL REVISIONS ARE BASED UPON CITY AND CONTRACTOR NOTES AND COMMENTS)

No.	DATE	REVISION
1	11/11/04	AS BUILTS

CITY OF HEATH
 24" WATER TRANSMISSION LINE - PROJECT "A"
 STA 80+00 TO 90+00



THE SEAL APPEARING ON THIS DOCUMENT WAS AUTHORIZED BY DAMIR LULO, P.E. NO. 90370 ON 1/2/04

SCALE: 1"=40'
 1"=5'
 IF SHEET IS IN 11"x17" FORMAT, DRAWINGS ARE AT 1/2 OF NOTED SCALE.

PROJECT No.: 02150
 DATE: JAN 2004
 DESIGNED: DL
 DRAWN: FMI
 CHECKED: JTM

SHEET
A9
 TOTAL SHEETS: 27

FREEMAN-MULLICAN, INC.
 ENGINEERS - ARCHITECTS - PLANNERS
 9600 FOREST LN. DALLAS, TX 75243-5555