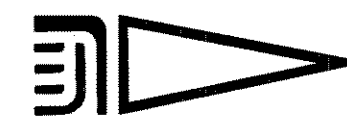
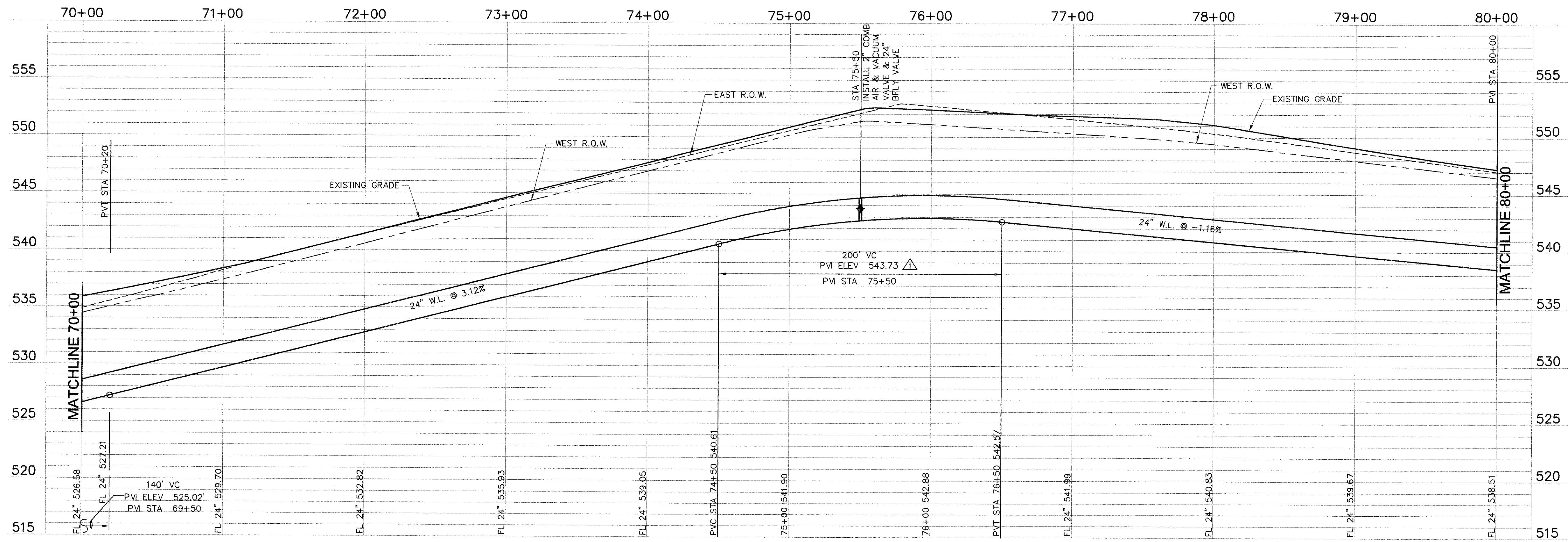


BM #1
 SQUARE CUT IN CENTER OF
 HEADWALL (2~10'X10' BOX
 CULVERT), 1400 FT ± EAST OF
 S.H. 205 AND 35 FT. ± SOUTH
 OF CENTERLINE OF FM 276.
 ELEVATION: 528.02

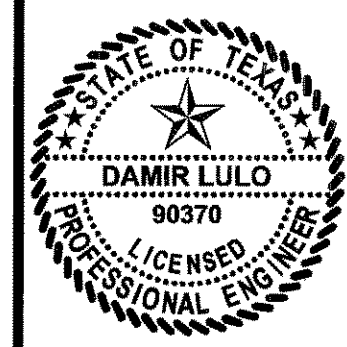
BM #2
 SQUARE CUT IN TOP OF
 HEADWALL ON EAST SIDE OF
 TOWNSEND DRIVE 30 FT. ± NORTH
 FROM CENTERLINE OF ACCESS
 GATE FOR EASTSIDE PUMP
 STATION (CITY OR ROCKWALL).
 ELEVATION: 540.14



RECORD DRAWING
 (ALL REVISIONS ARE BASED UPON CITY AND
 CONTRACTOR NOTES AND COMMENTS)

NO.	DATE	REVISION	BY
1	2.27.04	ANGLE CORRECTED	A.C.
2	2.27.04	PVI ELEV. CORRECTED	A.E.

CITY OF HEATH
 24" WATER TRANSMISSION LINE - PROJECT "A"
 STA 70+00 TO 80+00



THE SEAL APPEARING ON THIS
 DOCUMENT WAS AUTHORIZED BY
 DAMIR LULO, P.E. NO. 90370
 ON 1/12/04

SCALE: 1"=40'
 1"=5'

IF SHEET IS IN 11"x17"
 FORMAT, DRAWINGS ARE AT
 1/2 OF NOTED SCALE.

PROJECT No.: 02150
 DATE: JAN 2004
 DESIGNED: DL
 DRAWN: FMI
 CHECKED: JTM

SHEET
A8
 TOTAL SHEETS: 27

Freeman-Millican, Inc.
 ENGINEERS - ARCHITECTS - PLANNERS
 9500 FOREST LN. DALLAS, TX 75243-5555