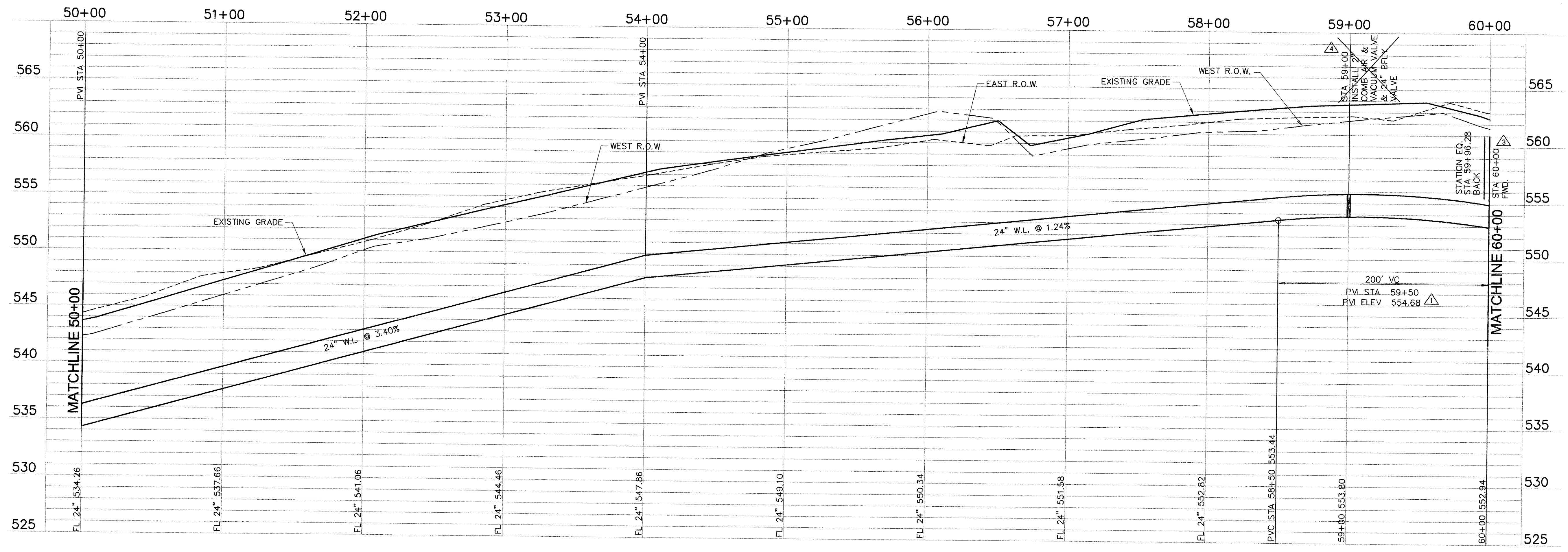


BM #1
 SQUARE CUT IN CENTER OF HEADWALL (2~10'X10' BOX CULVERT), 1400 FT ± EAST OF TOWNSEND DRIVE 30 FT. ± NORTH OF CENTERLINE OF ACCESS GATE FOR EASTSIDE PUMP STATION (CITY OR ROCKWALL).
 ELEVATION: 528.02

BM #2
 SQUARE CUT IN TOP OF HEADWALL ON EAST SIDE OF TOWNSEND DRIVE 30 FT. ± NORTH FROM CENTERLINE OF ACCESS GATE FOR EASTSIDE PUMP STATION (CITY OR ROCKWALL).
 ELEVATION: 540.14



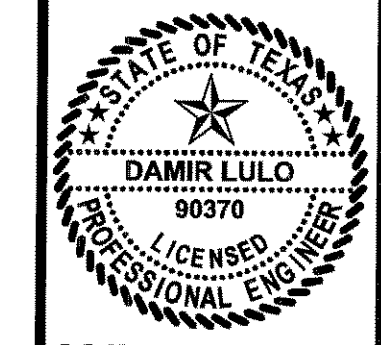
RECORD DRAWING
 (ALL REVISIONS ARE BASED UPON CITY AND CONTRACTOR NOTES AND COMMENTS)

NO.	DATE	REVISION	BY
1	3.29.04	STATION EQ. ADDED	D.L.
2	2.27.04	ANGLE CORRECTED	A.C.
3	2.27.04	IPV ELEV. CORRECTED	A.C.

11.18.04 RECORD DRAWING

FREEMAN-MILLICAN, Inc.
 ENGINEERS - ARCHITECTS - PLANNERS
 9500 FOREST LN. DALLAS, TX 75243-6555

CITY OF HEATH
 24" WATER TRANSMISSION LINE - PROJECT "A"
 STA 50+00 TO 60+00



THE SEAL APPEARING ON THIS DOCUMENT WAS AUTHORIZED BY DAMIR LULO, P.E. NO. 90370 ON 1/12/04

SCALE: 1"=40'
 1"=5'

IF SHEET IS IN 11"x17" FORMAT, DRAWINGS ARE AT 1/2" OF NOTED SCALE.

PROJECT No.: 02150
 DATE: JAN 2004
 DESIGNED: DL
 DRAWN: FMI
 CHECKED: JTM

SHEET
A6
 TOTAL SHEETS: 27