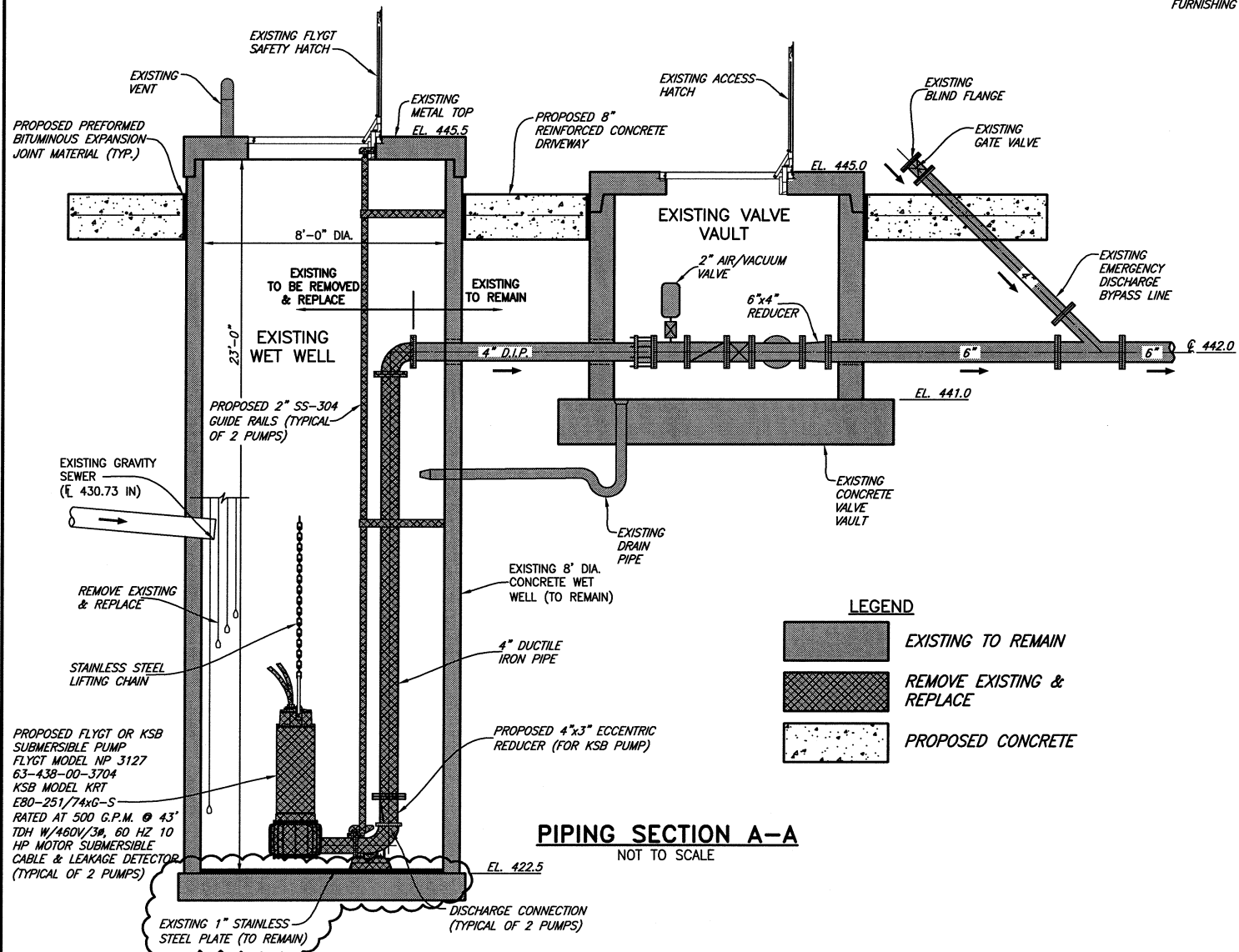
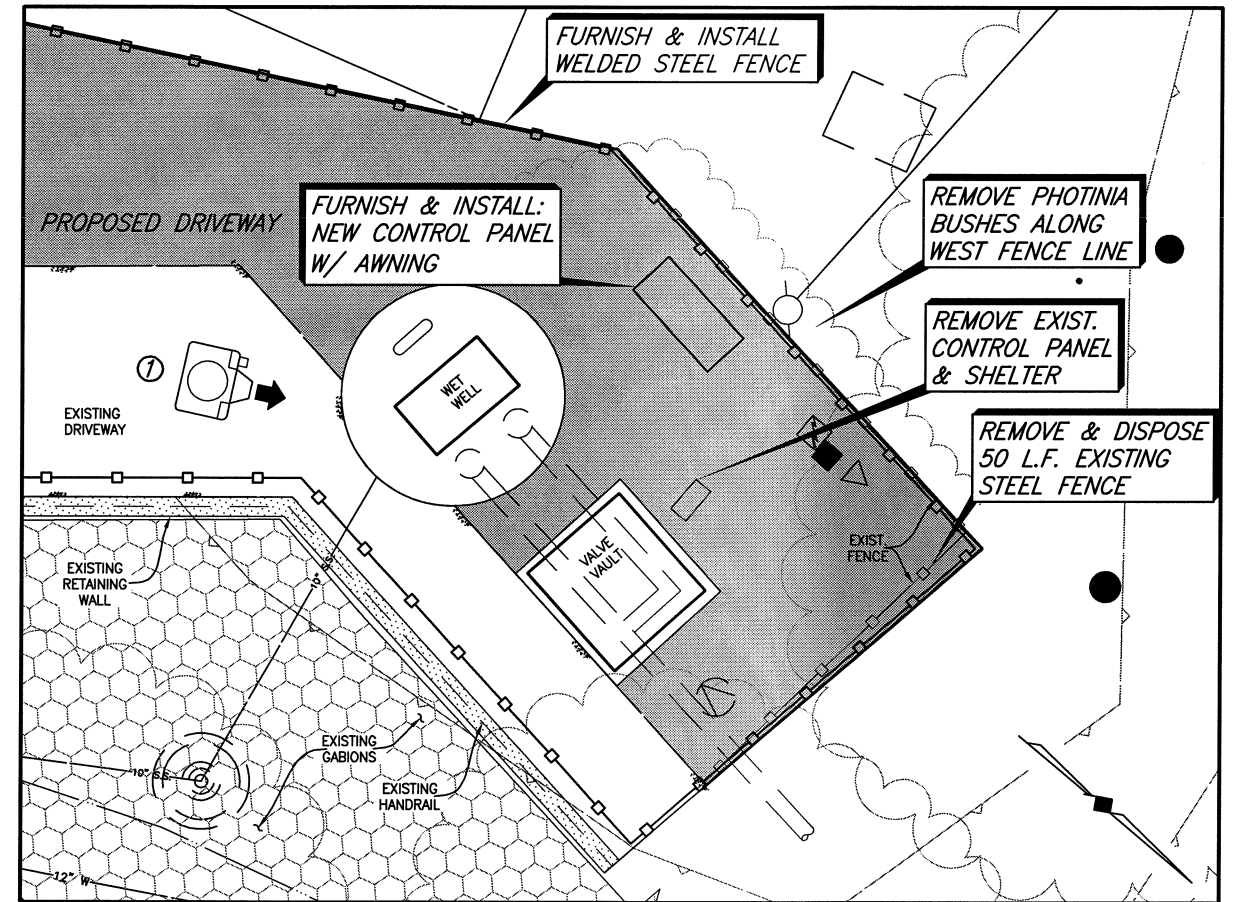


LIFT STATION NOTES

1. ALL DUCTILE IRON PIPING SHALL BE ANSI/AWWA C110 DUCTILE IRON, FLANGED, STANDARD THICKNESS.
2. EXTERIOR OF ALL DUCTILE IRON PIPING SHALL BE LINED WITH TWO 8.0 MIL COATS (16 MIL TOTAL DFT) OF TENEMEC SERIES 431 FERRY SHIELD COLOR OR APPROVED EQUAL. INTERIOR SHALL BE LINED WITH PROTECTO 401.
3. ALL EXPOSED METALLIC PIPE (NON-GALVANIZED, NON-STAINLESS STEEL OR ALUMINUM) AND FITTINGS WITHIN THE WET WELL AND VALVE VAULT SHALL BE COATED WITH A MINIMUM OF TWO 8.0 MIL COATS (12 MILS DFT) OF DEVCO BAR-RUST 233H HIGH PERFORMANCE EPOXY COATING OR APPROVED EQUAL.
4. CONTRACTOR SHALL COORDINATE LOCATION OF ALL APPURTENANCES WITH PUMP SUPPLIER. BASE ELBOW ANCHOR BOLT TYPE, LOCATION AND ORIENTATION SHALL BE COORDINATED BY THE CONTRACTOR THROUGH PUMP SUPPLIER ANCHORS FOR BASE ELBOWS SHALL BE INSTALLED PER PUMP SUPPLIER RECOMMENDATIONS.
5. REINFORCED CONCRETE DRIVEWAY SHALL BE CONSTRUCTED OF NCTCOG CLASS C CONCRETE (3600 PSI @ 28 DAYS) W/ NO. 3 BARS @ 24" O.C.E.W. ON COMPACTED SUBGRADE (95% STD. PROCTOR).
6. CONTROL PANEL INCLUDING RADIO, ANTENNA, ETC. SHALL BE FABRICATED & CONFIGURED BY KIMARK SYSTEMS IN CONFORMANCE WITH CITY OF ROCKWALL CONTROL PANEL SPECIFICATIONS STANDARD.
7. CONTRACTOR SHALL REMOVE EXISTING CONCRETE SLABS IN LIFT STATION AREA PRIOR TO SUBGRADE PREPARATION & DRIVEWAY PLACEMENT (PAYMENT SUBSIDIARY TO FURNISHING & INSTALLING DRIVEWAY PAVEMENT)



LEGEND

	EXISTING TO REMAIN
	REMOVE EXISTING & REPLACE
	PROPOSED CONCRETE

PROPOSED FLYGT OR KSB SUBMERSIBLE PUMP
 FLYGT MODEL NP 3127
 63-438-00-3704
 KSB MODEL KRT
 E80-251/74xG-S
 RATED AT 500 G.P.M. @ 43' TDH W/460V/3#, 60 HZ 10 HP MOTOR SUBMERSIBLE CABLE & LEAKAGE DETECTOR (TYPICAL OF 2 PUMPS)

This record drawing is a compilation of the sealed engineering drawing for this project; modified by addenda, change orders and information furnished by the contractor. The information shown on the record drawings that was provided by the contractor or others not associated with the design engineer cannot be verified for accuracy or completeness. This original sealed drawings are on file at the offices of Birkhoff, Hendricks & Carter, L.L.P.
 BY PAC DATE 11/30/12



PICTURE 1
NOT TO SCALE

BIRKHOFF, HENDRICKS & CARTER, L.L.P.
 PROFESSIONAL ENGINEERS
 Texas Firm F526
 11910 Greenville Ave., Suite 600
 Dallas, Texas 75243 (214) 361-7900

CITY OF ROCKWALL, TEXAS
 CHANDLERS DEEP LIFT STATION IMPROVEMENTS
 LIFT STATION PLAN & SECTION

BHC
 PROJECT NO.
 2009-115
 SHEET NO.
4
 SEPTEMBER 2011

These plans and related specifications were prepared for construction of this specific project only. Reuse of these documents is not permitted without written authorization of Birkhoff, Hendricks & Carter, L.L.P.