
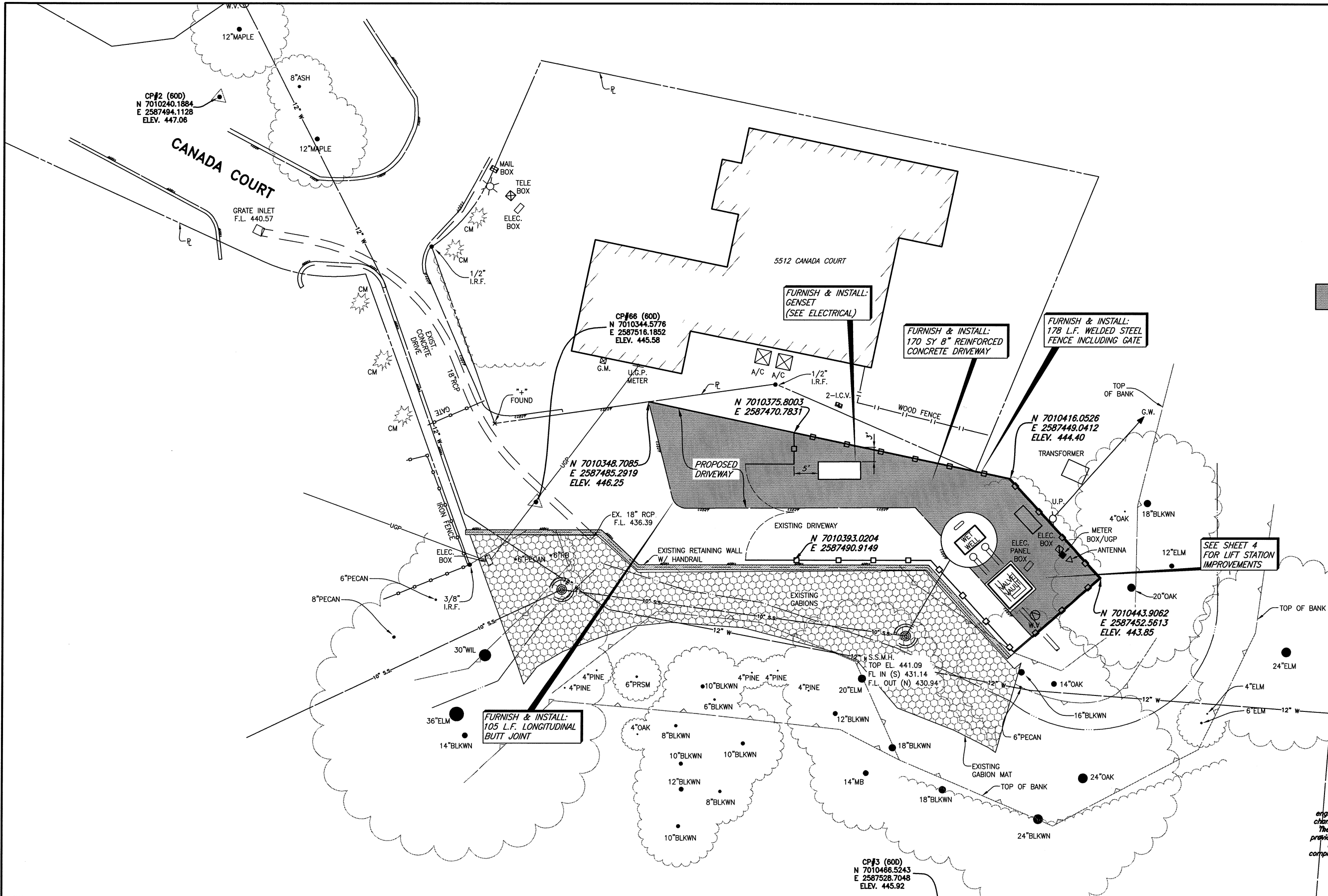


LEGEND

 PROPOSED 8" REINFORCED CONCRETE DRIVEWAY (170 S.Y.)

NOTE:
DRIVEWAY SHALL BE CONSTRUCTED OF NCTCOG CLASS C CONCRETE (3600 P.S.I. @ 28 DAYS) WITH NO. 3 BARS @ 24" O.C.E.W. ON COMPACTED SUBGRADE (95% STANDARD PROCTOR)



SEE SHEET 4 FOR LIFT STATION IMPROVEMENTS

This record drawing is a compilation of the sealed engineering drawing for this project, modified by addenda, change orders and information furnished by the contractor. The information shown on the record drawings that was provided by the contractor or others not associated with the design engineer cannot be verified for accuracy or completeness. This original sealed drawings are on file at the offices of Birkhoff, Hendricks & Carter, L.L.P.
BY PAC DATE 11/30/12

These plans and related specifications were prepared for construction of this specific project only. Reuse of these documents is not permitted without written authorization of Birkhoff, Hendricks & Carter, L.L.P.

BIRKHOFF, HENDRICKS & CARTER, L.L.P.
PROFESSIONAL ENGINEERS
Texas Firm F526
11910 Greenville Ave., Suite 600
Dallas, Texas 75243 (214) 361-7900

CITY OF ROCKWALL, TEXAS
CHANDLERS DEEP LIFT STATION IMPROVEMENTS
SITE PLAN

BHC PROJECT NO. 2009-115 SHEET NO. **3**
SEPTEMBER 2011