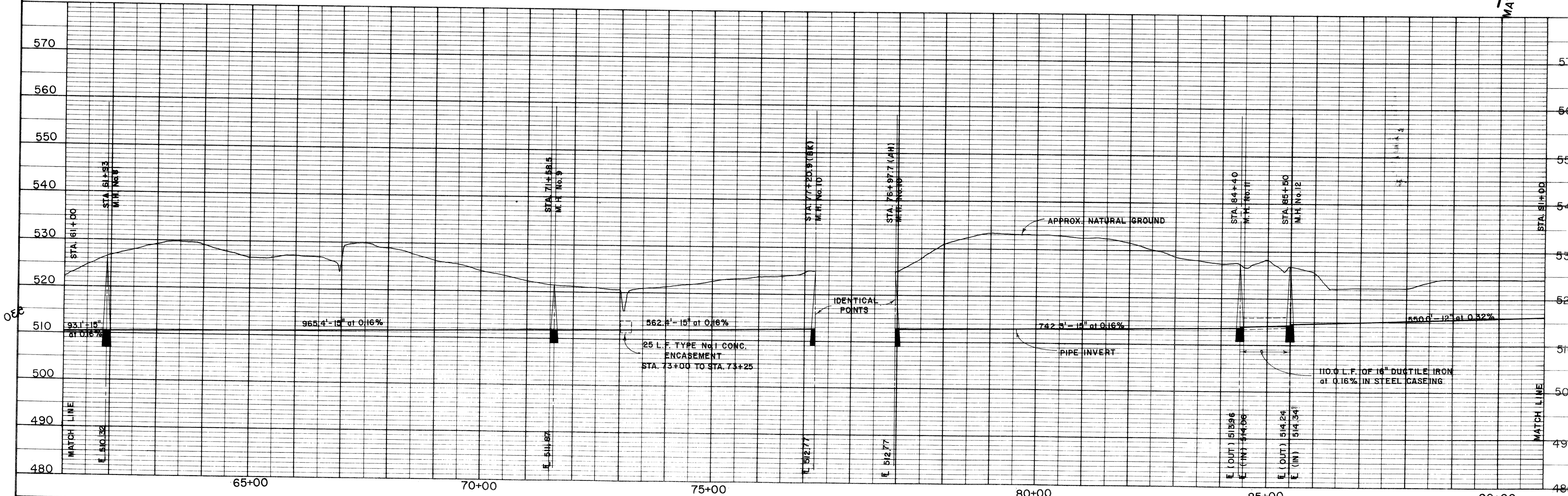
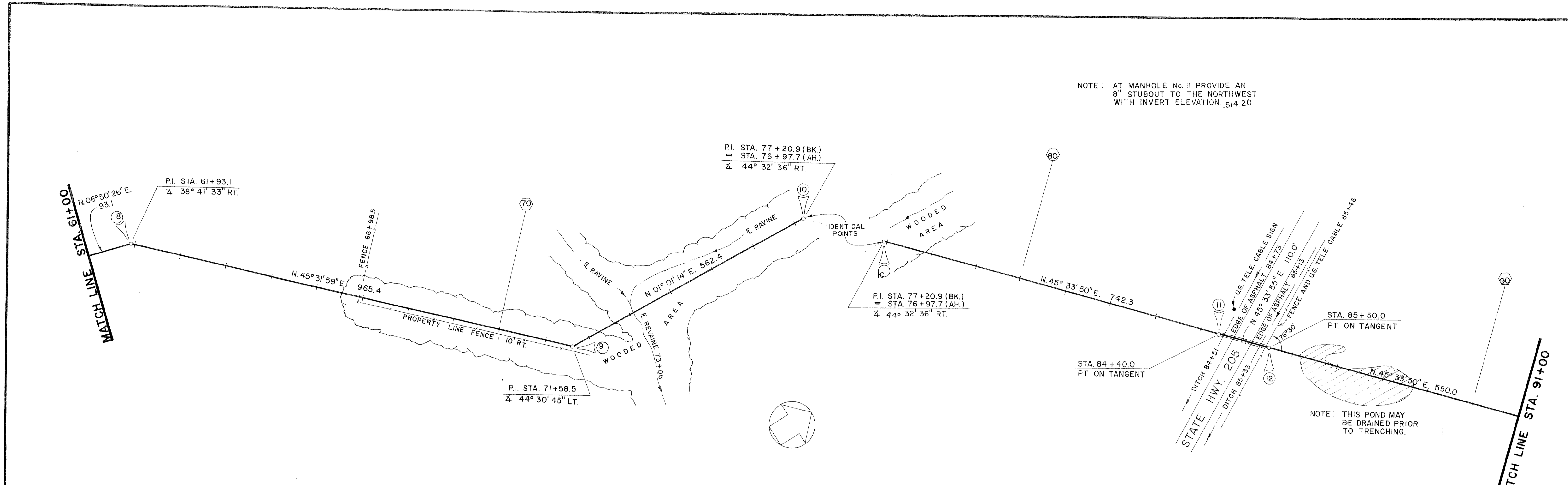


NOTE: AT MANHOLE No. 11 PROVIDE AN 8" STUBOUT TO THE NORTHWEST WITH INVERT ELEVATION .514.20



DESIGNED	C.J.H.	JOB NO.	ROK 81169	FREESE AND NICHOLS, INC. CONSULTING ENGINEERS FORT WORTH-AUSTIN, TEXAS	CITY OF ROCKWALL, TEXAS BUFFALO CREEK INTERCEPTOR SEWER	PLAN AND PROFILE - STA. 61+00 TO STA. 91+00	SHEET 4 OF 7
DRAWN	C.C.	DATE	JUNE 1982				
TRACED	C.C.	SCALE	1"=100' Horiz. 1"=10' Vert.				
CHECKED	C.J.H.	BY					