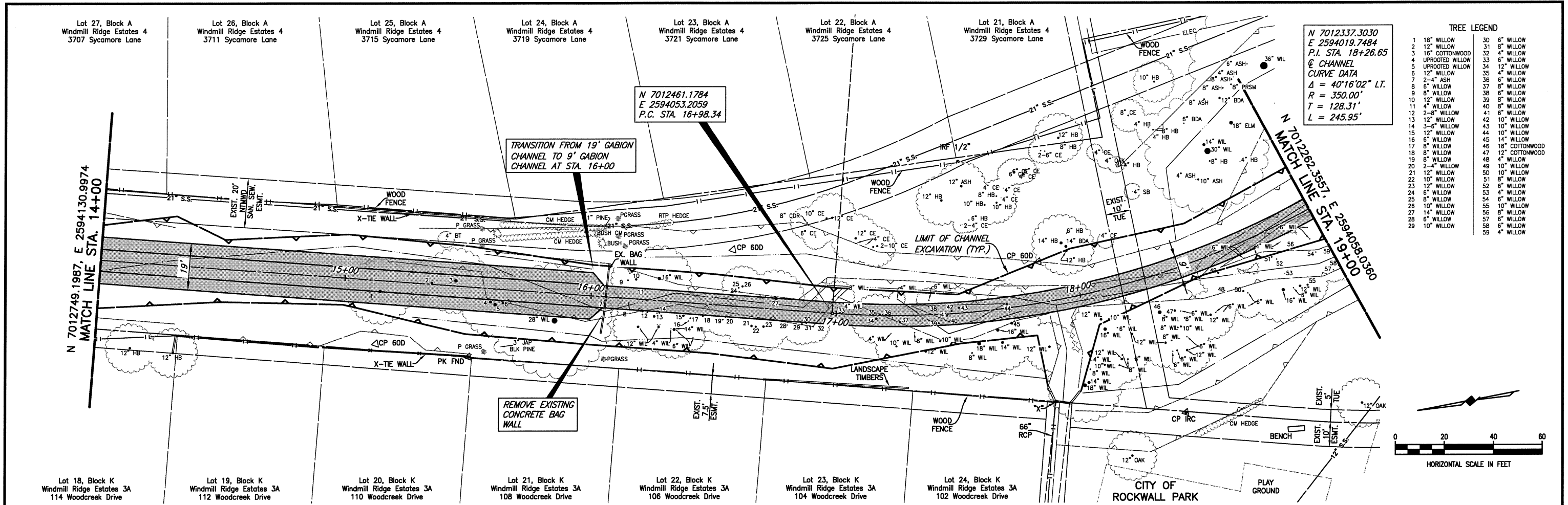
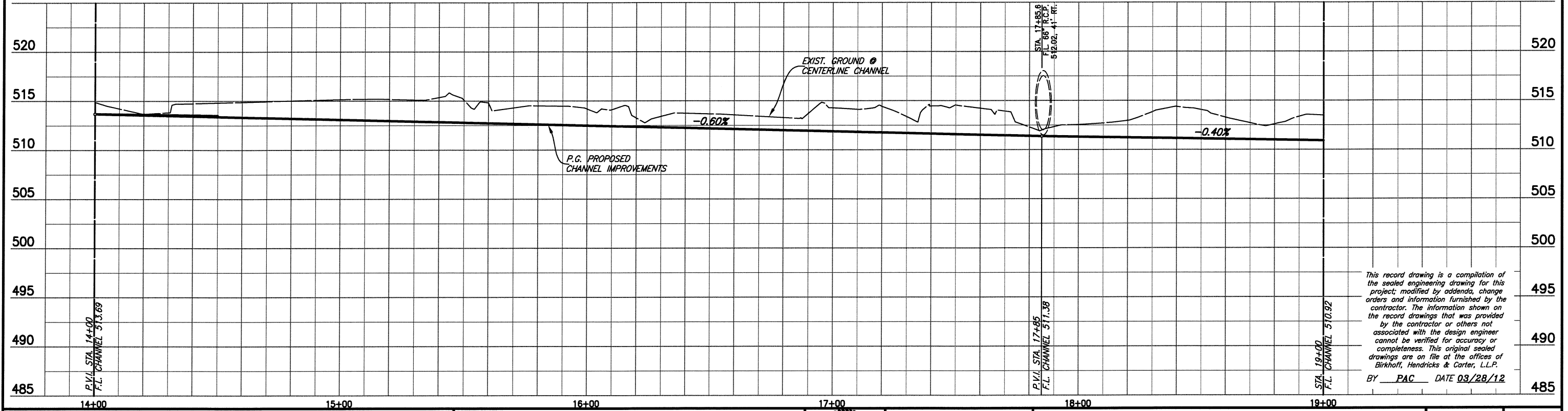
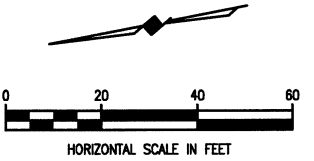


These plans and related specifications were prepared for construction of this specific project only. Reuse of these documents is not permitted without written authorization of Birkhoff, Hendricks, & Carter, L.L.P.



N 7012337.3030
E 2594019.7484
P.I. STA. 18+26.65
Q. CHANNEL
CURVE DATA
 $\Delta = 40'16'02''$ LT.
 $R = 350.00'$
 $T = 128.31'$
 $L = 245.95'$

TREE LEGEND	
1 18" WILLOW	30 6" WILLOW
2 12" WILLOW	31 8" WILLOW
3 16" COTTONWOOD	32 4" WILLOW
4 UPROOTED WILLOW	33 6" WILLOW
5 12" WILLOW	34 12" WILLOW
6 12" WILLOW	35 4" WILLOW
7 2-4" ASH	36 6" WILLOW
8 6" WILLOW	37 8" WILLOW
9 8" WILLOW	38 6" WILLOW
10 12" WILLOW	39 8" WILLOW
11 4" WILLOW	40 6" WILLOW
12 2-8" WILLOW	41 6" WILLOW
13 12" WILLOW	42 10" WILLOW
14 3-6" WILLOW	43 10" WILLOW
15 12" WILLOW	44 10" WILLOW
16 6" WILLOW	45 14" WILLOW
17 8" WILLOW	46 18" COTTONWOOD
18 8" WILLOW	47 12" COTTONWOOD
19 6" WILLOW	48 4" WILLOW
20 2-4" WILLOW	49 10" WILLOW
21 12" WILLOW	50 10" WILLOW
22 10" WILLOW	51 8" WILLOW
23 12" WILLOW	52 6" WILLOW
24 6" WILLOW	53 4" WILLOW
25 8" WILLOW	54 6" WILLOW
26 10" WILLOW	55 10" WILLOW
27 14" WILLOW	56 8" WILLOW
28 6" WILLOW	57 6" WILLOW
29 10" WILLOW	58 6" WILLOW
	59 4" WILLOW



This record drawing is a compilation of the sealed engineering drawing for this project; modified by addenda, change orders and information furnished by the contractor. The information shown on the record drawings that was provided by the contractor or others not associated with the design engineer cannot be verified for accuracy or completeness. This original sealed drawings are on file at the offices of Birkhoff, Hendricks & Carter, L.L.P.

BY PAC DATE 03/28/12

BIRKHOFF, HENDRICKS & CARTER, L.L.P. PROFESSIONAL ENGINEERS Texas Firm F526 11910 Greenville Ave., Suite 600 Dallas, Texas 75243 (214) 361-7900		CITY OF ROCKWALL, TEXAS BROCKWAY BRANCH IMPROVEMENTS BROCKWAY BRANCH CHANNEL IMPROVEMENTS STA. 14+00 TO STA. 19+00		BHC PROJECT NO. 2007-153 AUGUST 2010	SHEET NO. 8
--	--	--	--	---	---------------------------