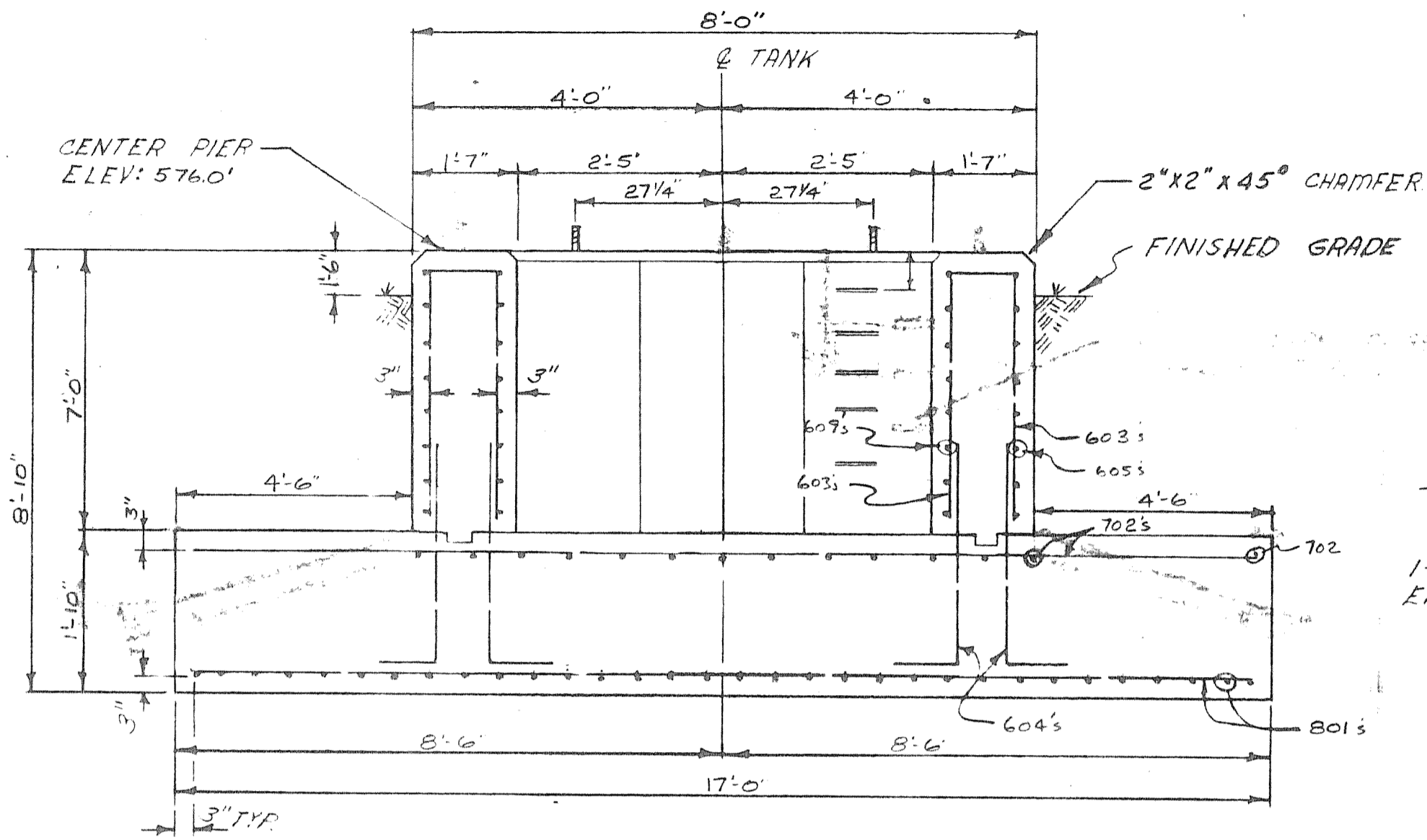
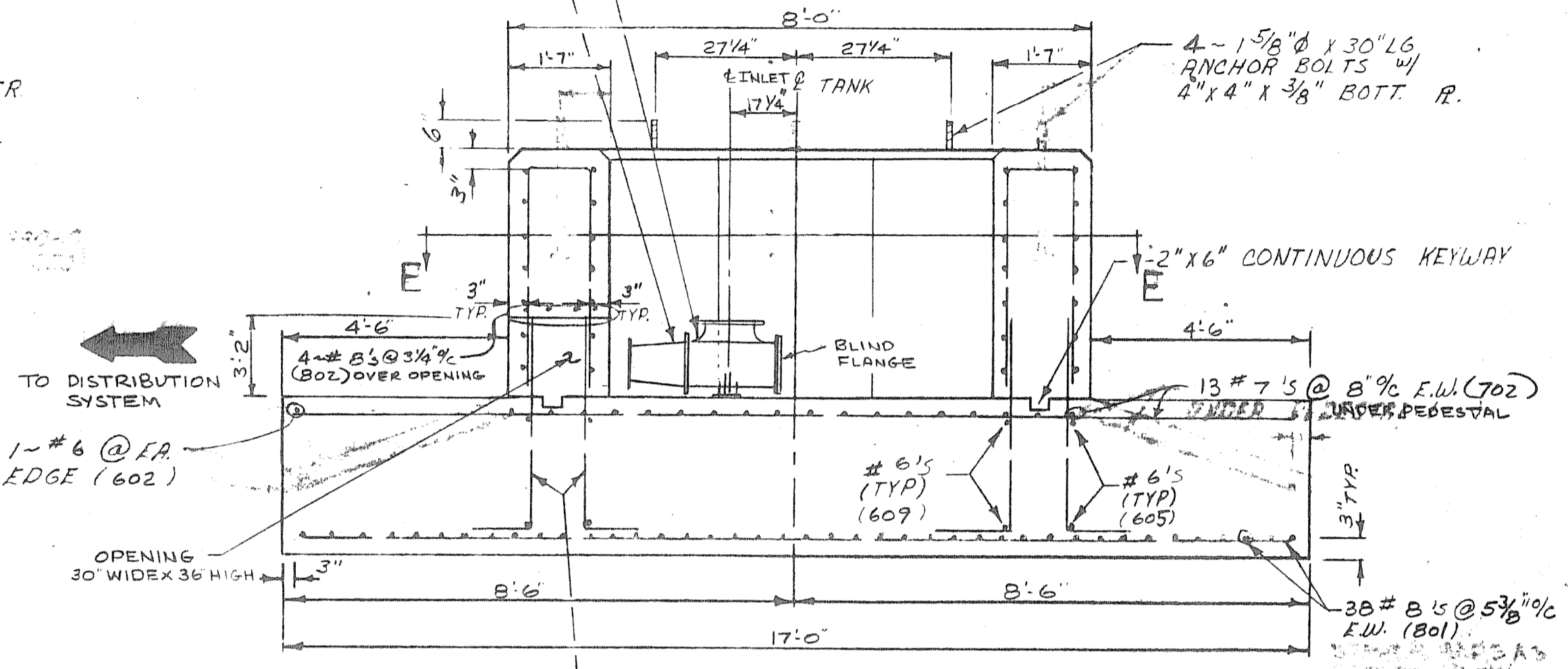


20"x16" C.I. REDUCER (F)
 PIPING BEYOND REDUCER TO BE PER
 PLANS AND SPECIFICATIONS AS PREPARED
 BY FREESE NICHOLS, INC.

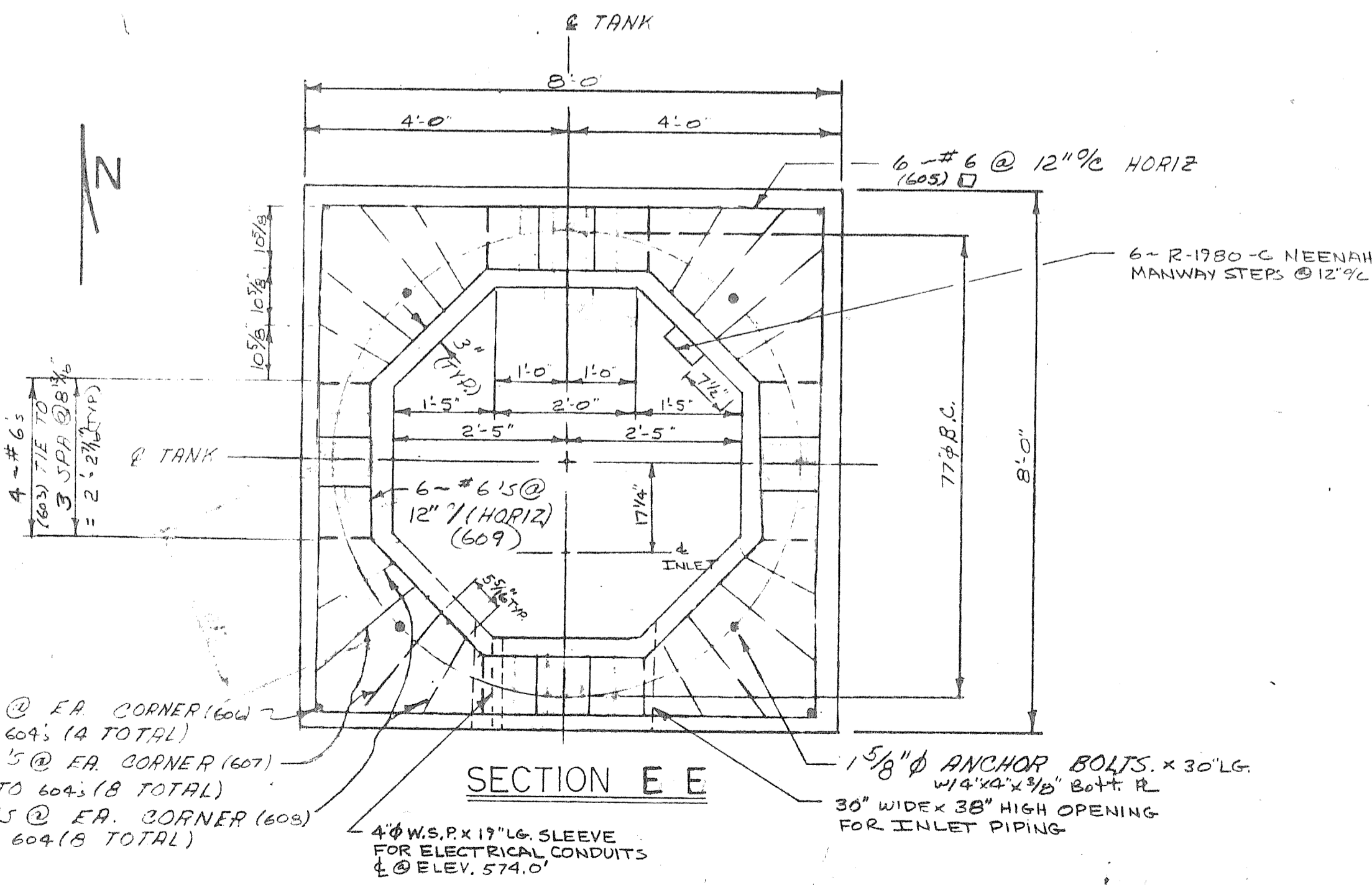
20" C.I. BASE TEE (F) W/BLIND FLANGE
 BASE TO BE DRILLED. ANCHOR W/4-
 3/4" EXP. ANCHORS.



SECTION C C



SECTION D D

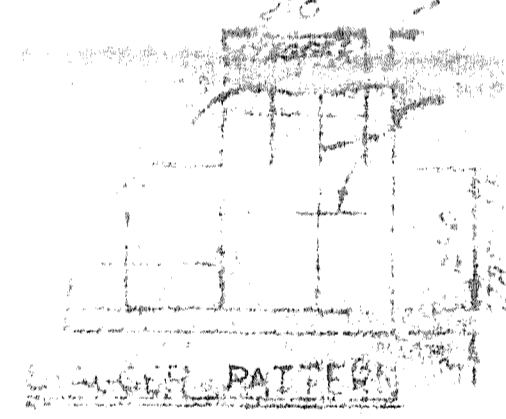


SECTION E E

1-#6 @ EA CORNER (606)
 TIE TO 604's (4 TOTAL)
 2-#6.5 @ EA CORNER (607)
 TIE TO 604's (8 TOTAL)
 2-#6.5 @ EA CORNER (608)
 TIE TO 604 (8 TOTAL)

1 5/8" ANCHOR BOLTS x 30" LG.
 W/4"x4"x3/8" BOTT. PL.
 30" WIDEX 36" HIGH OPENING
 FOR INLET PIPING

4" W.S. x 19" LG. SLEEVE
 FOR ELECTRICAL CONDUITS
 @ ELEV. 574.0'



NO.	DATE	BY	REVISION
UNIVERSAL TANK & IRON WORKS, INC.			
INDIANAPOLIS, INDIANA			
ENGINEER APPROVAL		FOUNDATION DETAILS CENTER PIER	
FOR:		ROCKWALL, TX	
DATE:	24 MAY 78	SCALE:	NONE
DRWN BY:	KLM/V.L.R.	CHECKED:	EUB
JOB NO:	6544	SHEET	F2 OF F2