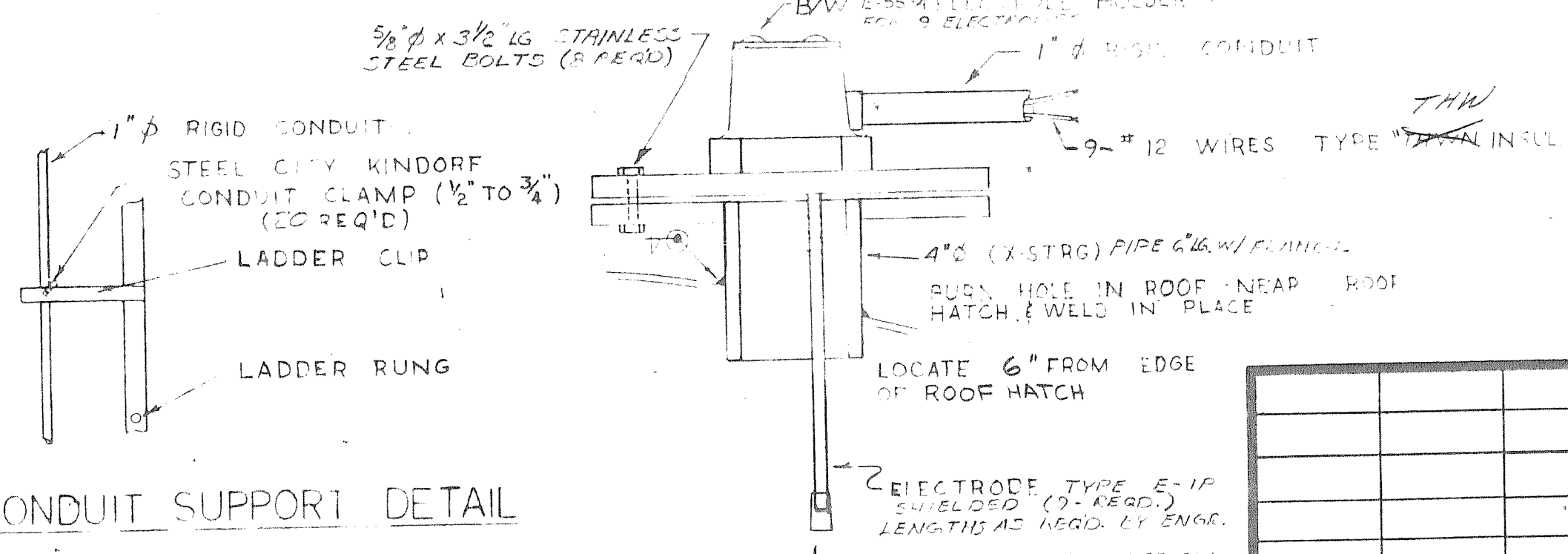


DETAIL P

NOTE: INTERIOR LIGHTS TO BE INSTALLED PER PLANS (SHT. E-1) AND SPEC. (S. PA. 100.1) AS PREPARED BY FREESE & NICHOLS, INC.



CONDUIT SUPPORT DETAIL

1" φ RIGID GALV. CONDUIT IN 10'-0" LENGTH w/1 COUPLING (15 REQ'D)
 3"x3"x 1/4" R. CLIP 6" TO 9" ABOVE BOX
 KILLARK TYPE FS & FD ELECTROLET w/
 WEATHER PROOF COVER (OR EQUAL)

END OF UTI CONTRACT @ POWER POLE (SEE SHT. E-3 OF E-3)

SLEEVE TROUGH CENTER PIER WALL TO BE PROVIDED BY FOUNDATION CONTR. ELEC. CONTR. TO INCLUDE CONDUIT FOR TELEPHONE CO.

PUMP CONTROL DETAILS

NOTE: ITEMS NOTED WITH PRODUCT NAMES ARE PREFERRED. IF THEY ARE UNAVAILABLE ITEMS OF EQUAL QUALITY MAY BE USED, IF APPROVED BY THE ENGINEER.

ALL ELECTRICAL WORK IS TO BE DONE BY A UTI SUBCONTRACTOR IN ACCORDANCE WITH PLANS & SPECS. AS PREPARED BY: FREESE & NICHOLS, INC.

NO SUBSTITUTIONS FROM THESE SUBMITTALS

NO.	DATE	BY	REVISION

UNIVERSAL TANK & IRON WORKS, INC.
 INDIANAPOLIS, INDIANA

ENGINEER APPROVAL

ELECTRICAL DETAILS
 PROBE

NOT APPROVED - REVISE AND RESUBMIT

APPROVED AS CORRECTED

CHECKED FOR GENERAL COMPLIANCE WITH PLANS AND SPECIFICATIONS. CONTRACTOR SHALL VERIFY ALL DIMENSIONS AND QUANTITIES, AND COORDINATE FOURTH PARTY ASSEMBLY AND WORK OF ALL TRADES. NO DEVIATION FROM PLANS AND SPECIFICATIONS PERMITTED UNLESS SPECIALLY NOTED.

FREESE AND NICHOLS
 CONSULTING ENGINEERS -
 BY: *[Signature]* DATE: 6.2.78

FOR: ROCKWALL, TX.

DATE: 4.25.78 SCALE: NONE

DRWN BY: KLM/CD CHECKED: V.L.R.

JOB NO: 6544 SHEET E-2 OF E-3