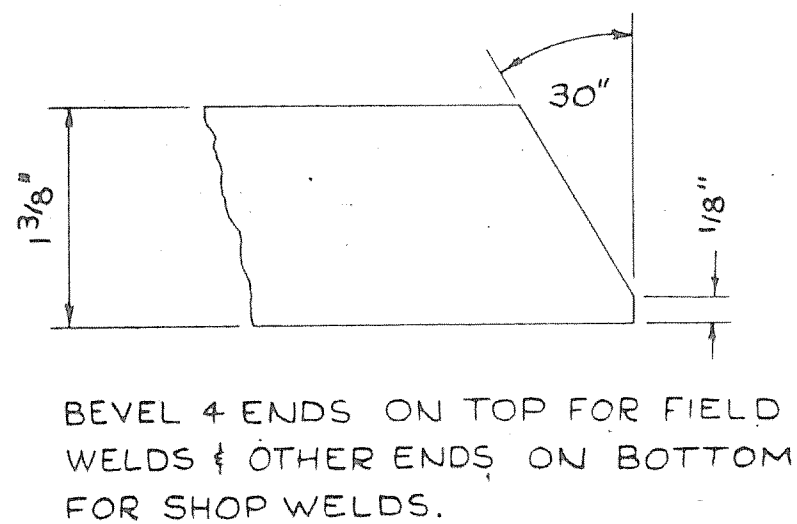
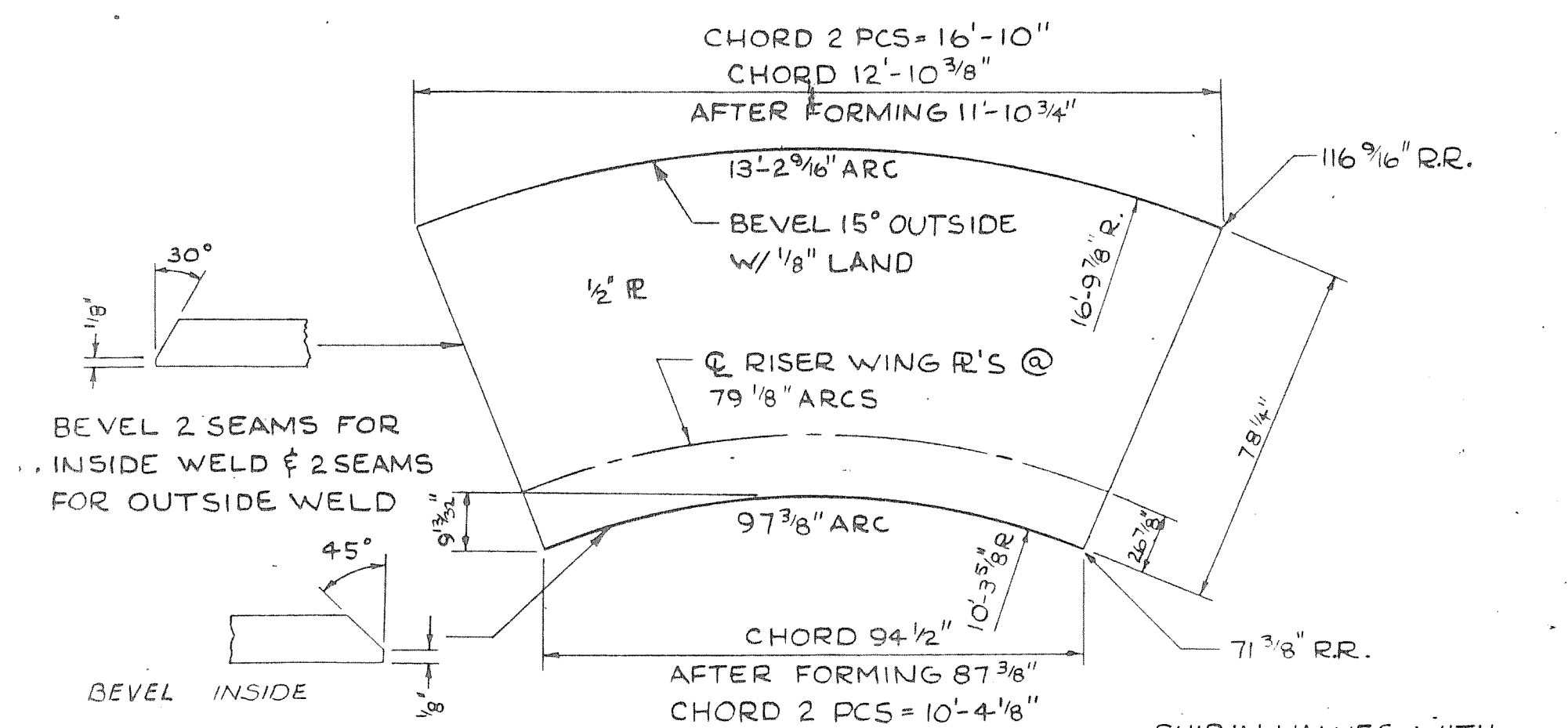


DETAIL A



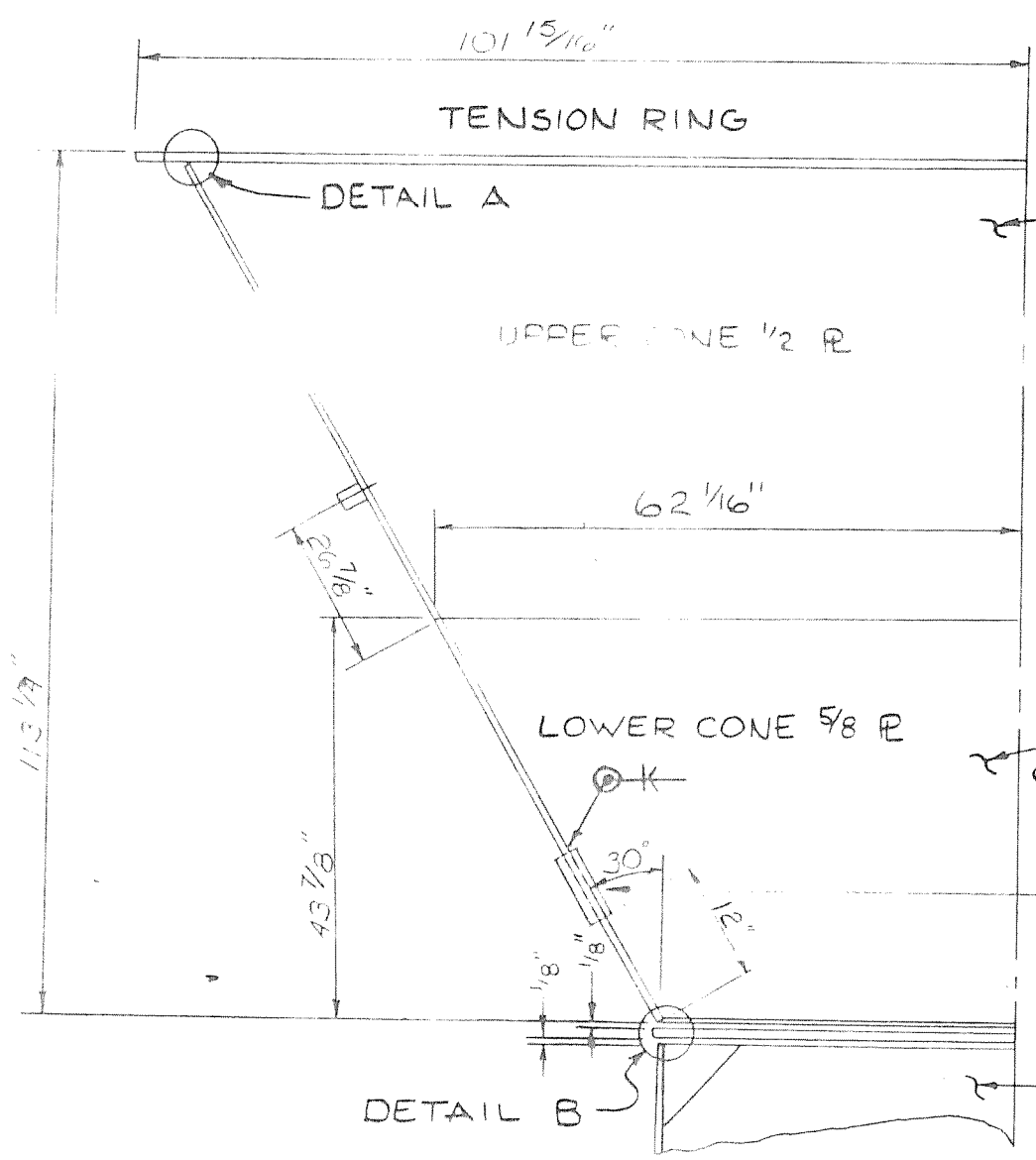
DETAIL C



UPPER CONE SECTION  
(4 REQ'D 1415 LBS. EA.)

SHIP IN HALVES WITH TENSION RINGS (4630 LBS.)

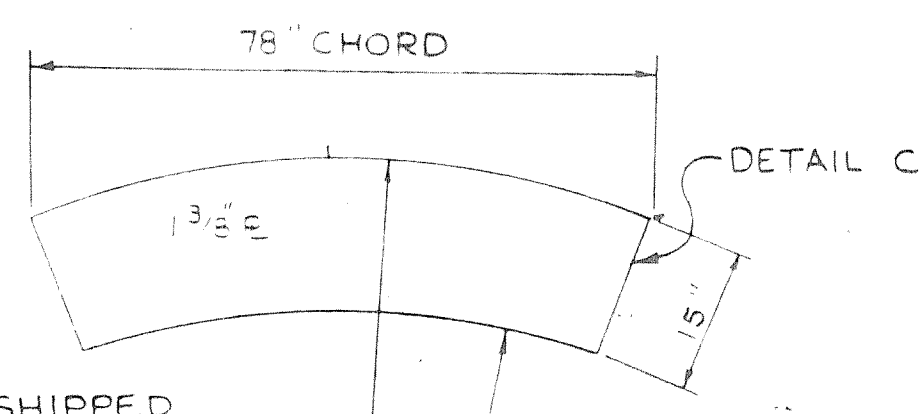
CONE SETUP



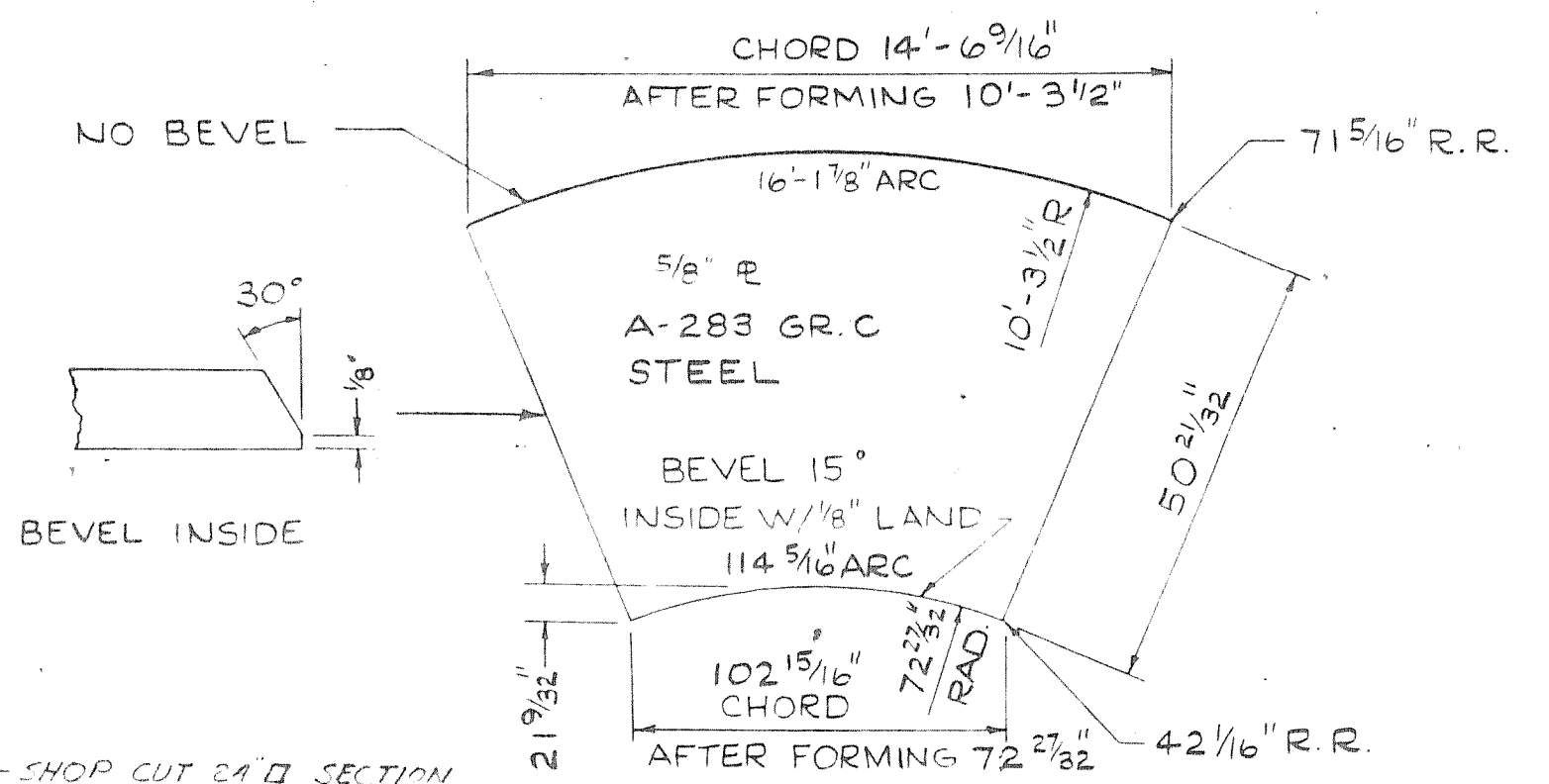
UPPER CONE SHIPPED IN HALVES W/TENSION RING

LOWER CONE SHIPPED IN HALVES

12" X 16" MANWAY  
SEE SHT. CM-1 (FIELD LOCATE)  
LENAPE FORGE STRAIGHT RING  
1/2" WALL

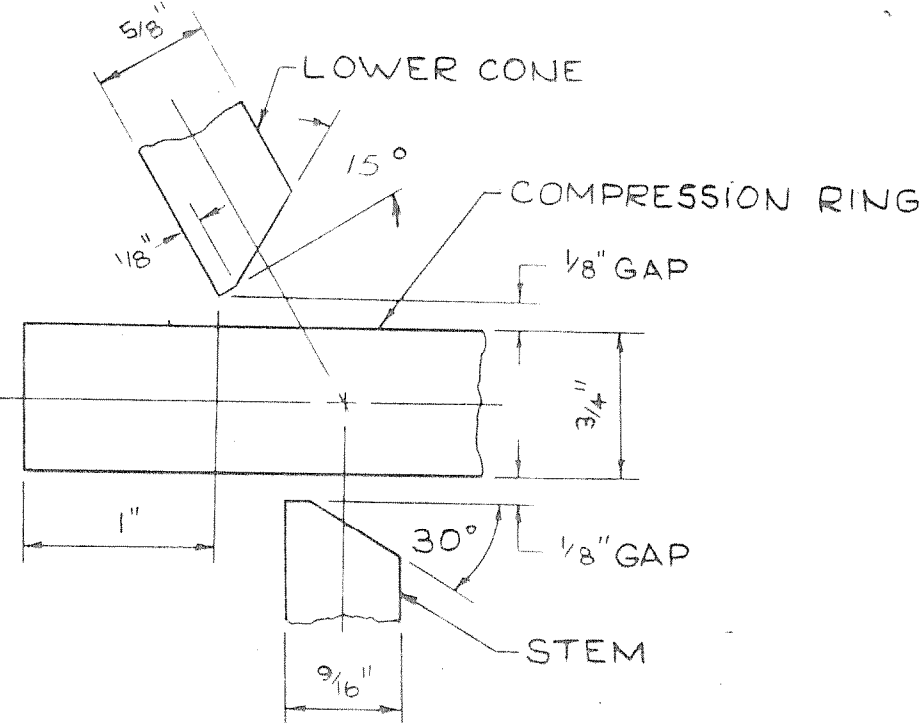


TENSION RING  
(8 REQ'D 450 LBS. EA.)

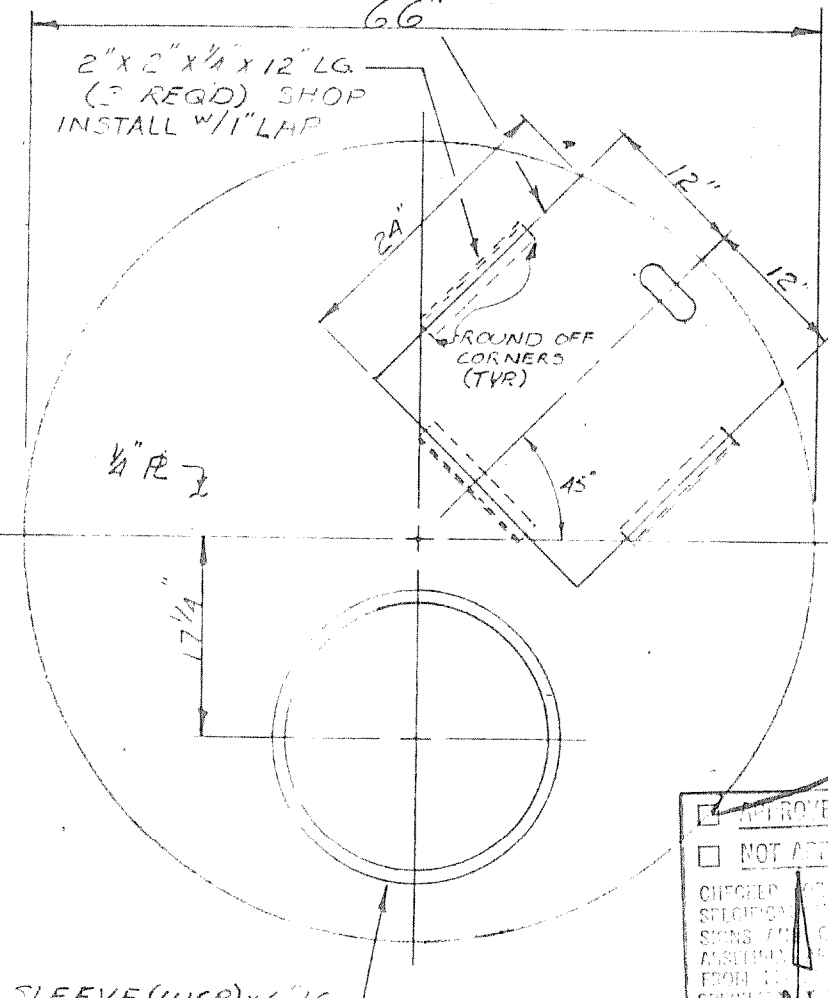


LOWER CONE SECTION  
(2 REQ'D 1400 LBS. EA.)

SHOP CUT 24" DIA SECTION FROM COVER PLATE & CUT A 2" X 6" HAND HOLE NEAR CURVE. FOR USE AS MANWAY COVER



DETAIL B



PIT COVER PLATE  
(1 REQ'D)

NO.	DATE	BY	REVISION

UNIVERSAL TANK & IRON WORKS, INC.  
INDIANAPOLIS, INDIANA      ENNIS, TEXAS

ENGINEER APPROVAL

APPROVED AS SHOWN  
CHECKED BY: [Signature]  
DATE: 6-2-78

CONE DETAILS  
500,000 GAL. 56'-0" Ø 72" Ø RISER

FOR: ROCKWALL, TX.

DATE: 4-25-78      SCALE: NONE  
DRWN BY: [Signature]      CHECKED: V.L.R.  
JOB NO: 6544      SHEET 5 OF 9