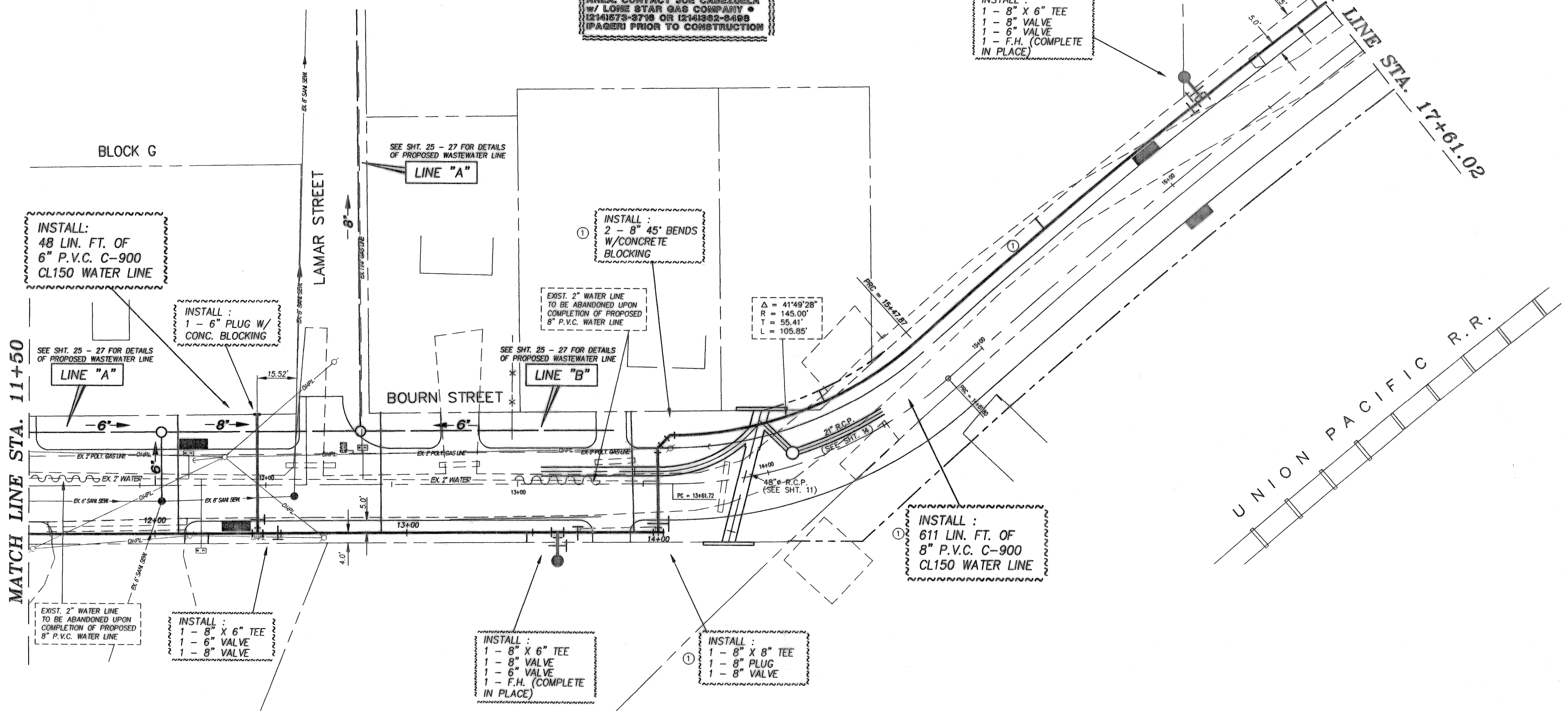


CAUTION !!
UNDERGROUND GAS MAIN IN THIS AREA. CONTACT JOE CAREZUELA w/ LONE STAR GAS COMPANY • (214)573-3718 OR (214)382-6498 (PAGER) PRIOR TO CONSTRUCTION

INSTALL :
1 - 8" X 6" TEE
1 - 8" VALVE
1 - 6" VALVE
1 - F.H. (COMPLETE IN PLACE)



INSTALL:
48 LIN. FT. OF
6" P.V.C. C-900
CL150 WATER LINE

INSTALL :
1 - 6" PLUG W/
CONC. BLOCKING

INSTALL :
2 - 8" 45' BENDS
W/CONCRETE
BLOCKING

EXIST. 2" WATER LINE
TO BE ABANDONED UPON
COMPLETION OF PROPOSED
8" P.V.C. WATER LINE

$\Delta = 41'49"28"$
 $R = 145.00'$
 $T = 55.41'$
 $L = 105.85'$

SEE SHT. 25 - 27 FOR DETAILS
OF PROPOSED WASTEWATER LINE
LINE "A"

SEE SHT. 25 - 27 FOR DETAILS
OF PROPOSED WASTEWATER LINE
LINE "B"

INSTALL :
611 LIN. FT. OF
8" P.V.C. C-900
CL150 WATER LINE

EXIST. 2" WATER LINE
TO BE ABANDONED UPON
COMPLETION OF PROPOSED
8" P.V.C. WATER LINE

INSTALL :
1 - 8" X 6" TEE
1 - 8" VALVE
1 - 6" VALVE

INSTALL :
1 - 8" X 6" TEE
1 - 8" VALVE
1 - 6" VALVE
1 - F.H. (COMPLETE
IN PLACE)

INSTALL :
1 - 8" X 8" TEE
1 - 8" PLUG
1 - 8" VALVE

LEGEND

- EXISTING POWER POLE
- EXISTING TELEPHONE PEDESTAL
- EXISTING WATER METER
- EXISTING GAS METER
- EXISTING WATER VALVE
- EXISTING TELEPHONE MANHOLE
- EXISTING FIRE HYDRANT

WATER LINE IMPROVEMENTS
BOURN STREET
ROCKWALL, TEXAS
CITY OF ROCKWALL
"THE NEW HORIZON"

REVISION NO.	REMARKS	DATE
①	Moved 8" Water Line to Northwest R.O.W., added 2-8" 45' bends, 1-8" valve, 1-8" x 8" tee, 1-8" plug, & added 11 L.F. of 8" Water Line.	1/25/97

DESIGNED: B.W.H.
DRAWN: ACAD
JOB NO. DATE: 5/24/96 SHEET NO. 22 of 28

