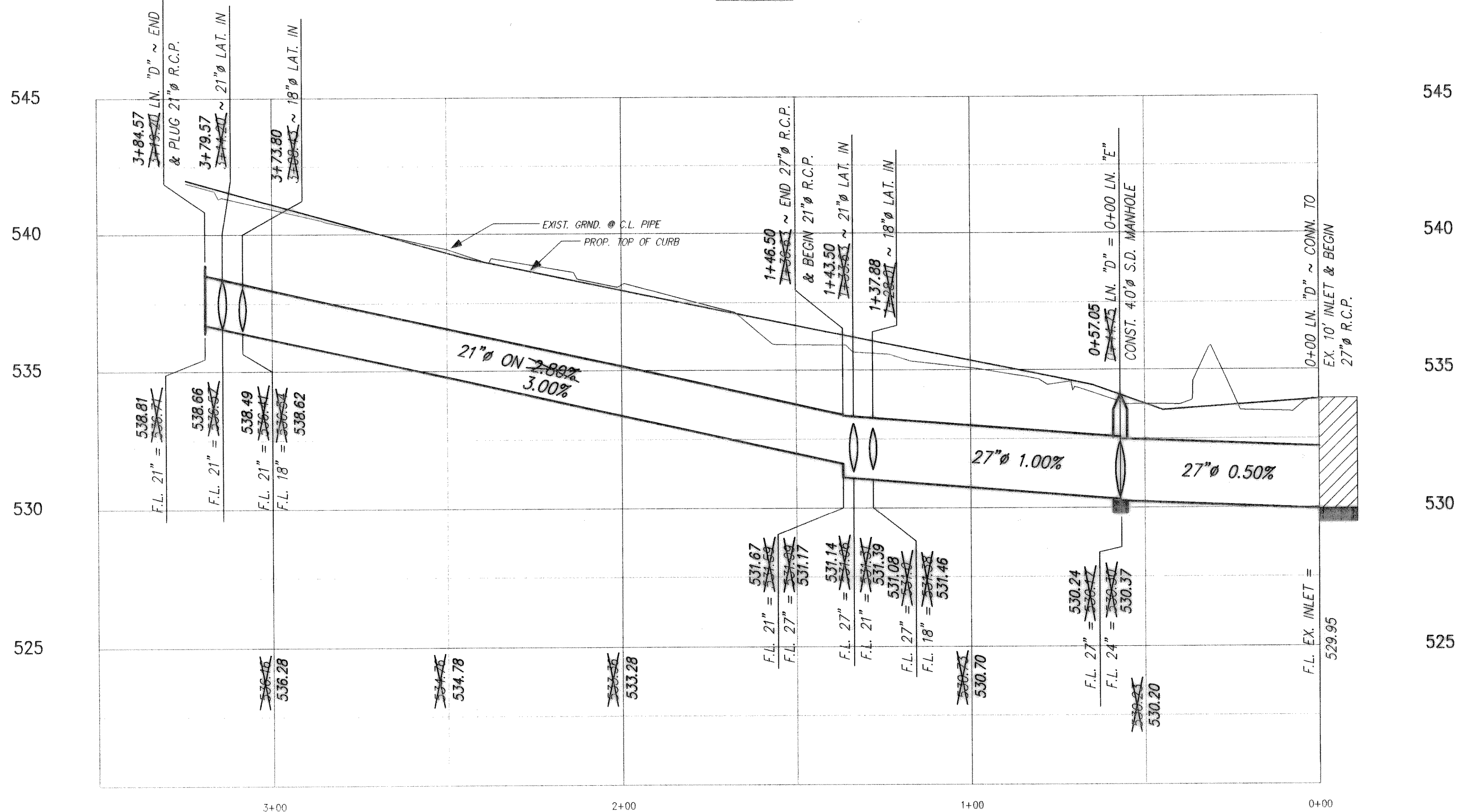
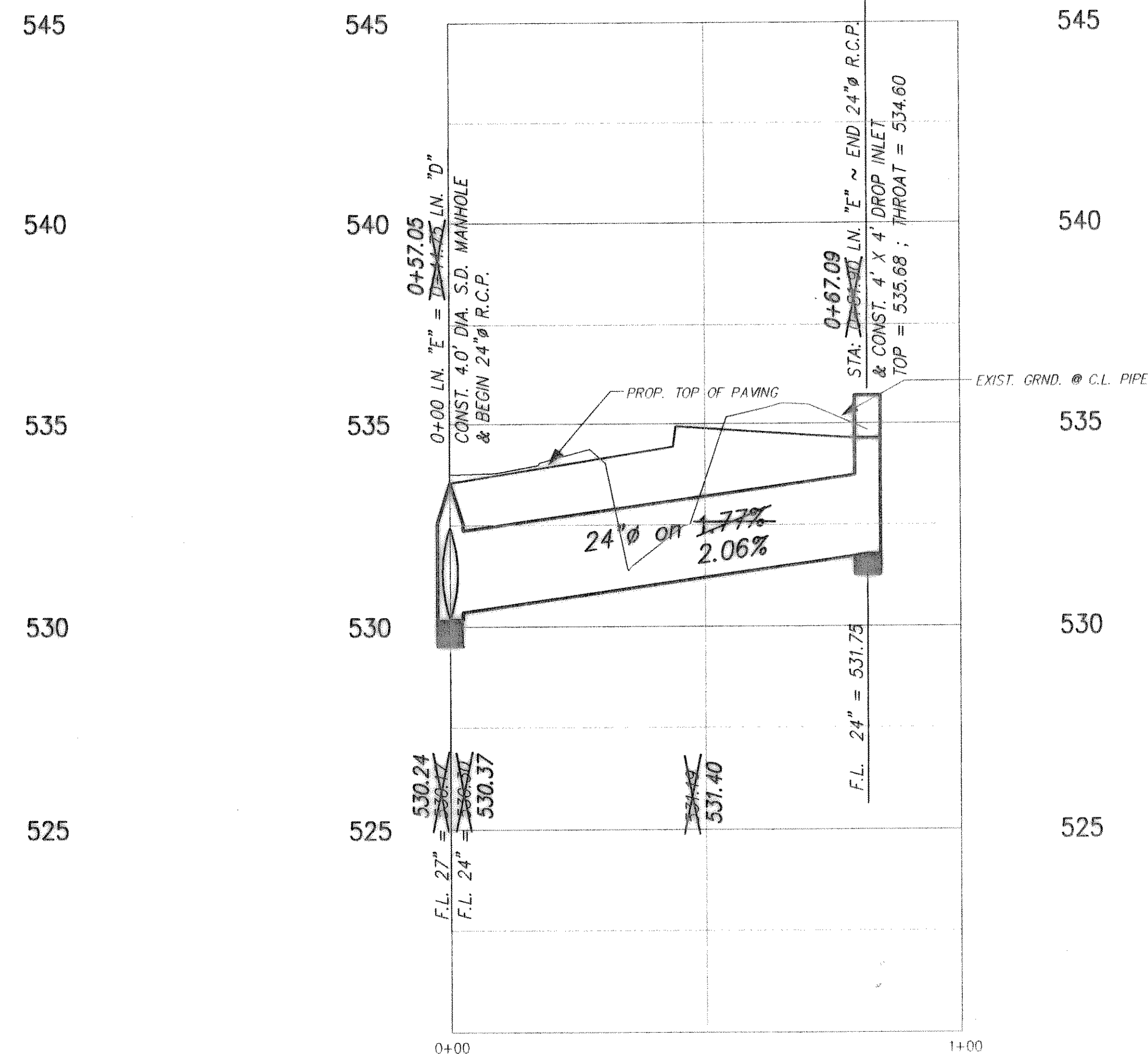


LINE "D"



LINE "E"

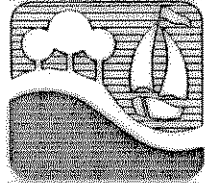


B.M. NO. 1 ~ 60D NAIL SET IN POWER POLE ON THE EAST SIDE OF THROCKMORTON & APPROX. 141.4 FEET NORTH OF CENTER INTERSECTION OF BOURN & THROCKMORTON. ELEV. = 574.10

B.M. NO. 2 ~ 60D NAIL SET IN POWER POLE ON THE SOUTH SIDE OF BOURN STREET & APPROX. 232.3 FEET EAST OF CENTER INTERSECTION OF PETERS COLONY & BOURN STREET. ELEV. = 551.50

SCALE: 1" = 20' HORZ.
1" = 2.5' VERT.

REVISION NO.	REMARKS	DATE
1	Revised grades to match new pipe alignment. Extended Line "D" from 3+19.20 to 3+84.57	1/23/97

STORM DRAINAGE PROFILES
BOURN STREET
ROCKWALL, TEXAS
 **CITY OF ROCKWALL**
 "THE NEW HORIZON"

DESIGNED: B.W.H.	THE SEAL APPEARING ON THIS DOCUMENT WAS AUTHORIZED BY W.L. DOUPHRETE II TEXAS P.E. NO. 60102 ON 1/23/97
DRAWN: ACAD	
JOB NO.	DATE: 9/23/96 SHEET NO. 18 OF 28

