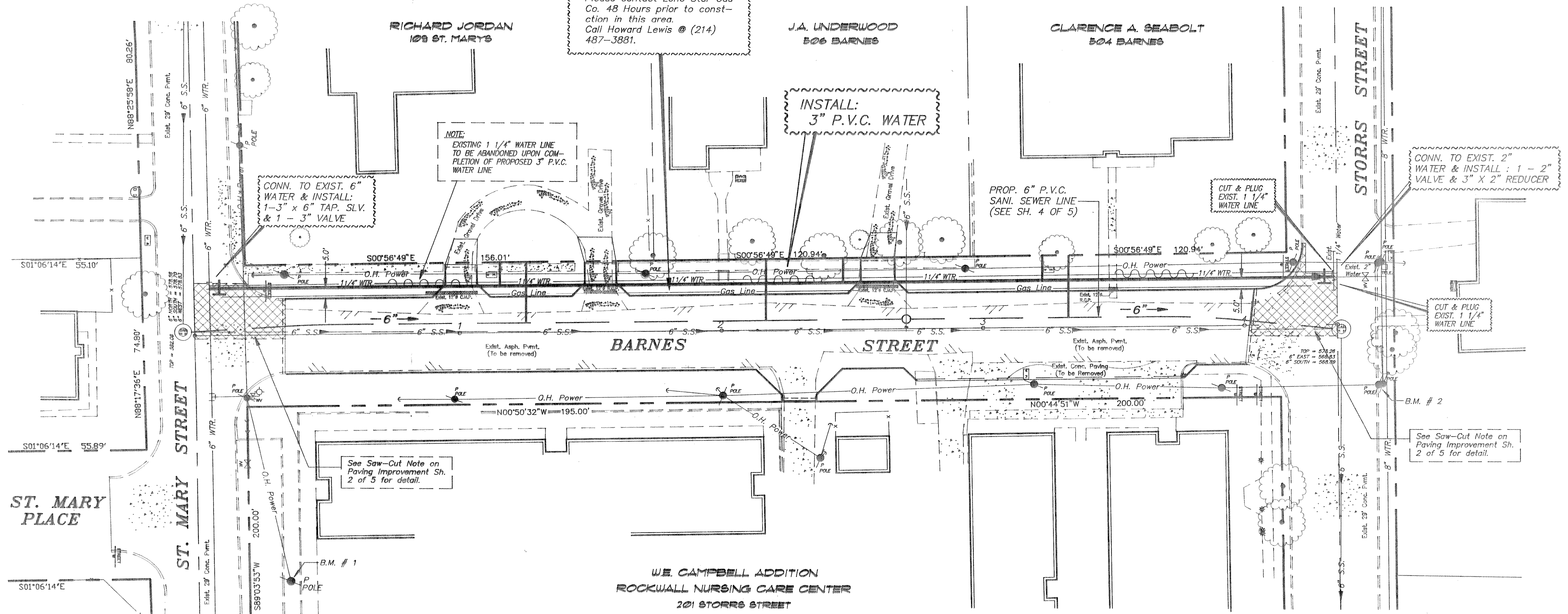


CAUTION :
Underground Gas Line in area
Please contact Lone Star Gas
Co. 48 Hours prior to consti-
tution in this area.
Call Howard Lewis @ (214)
487-3881.



See Saw-Cut Note on
Paving Improvement Sh.
2 of 5 for detail.

See Saw-Cut Note on
Paving Improvement Sh.
2 of 5 for detail.

B.M. NO. 1 :
R.R. SPIKE IN POWER POLE, NORTH
SIDE OF ST. MARY ST., 100'± EAST
OF BARNES ST. ELEV. = 578.69

B.M. NO. 2 :
R.R. SPIKE IN POWER POLE, NORTH
SIDE OF STORRS ST., 20' EAST OF
Q. OF BARNES ST. ELEV. = 574.23

WATER LINE IMPROVEMENTS
BARNES STREET
ROCKWALL, TEXAS
CITY OF ROCKWALL
"THE NEW HORIZON"

REVISION NO.	REMARKS	DATE

DESIGNED: B.W.H.
DRAWN: ACAD
JOB NO. DATE: 1/93
SHEET NO. 5 OF 5

