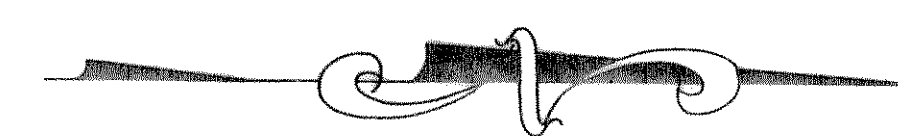
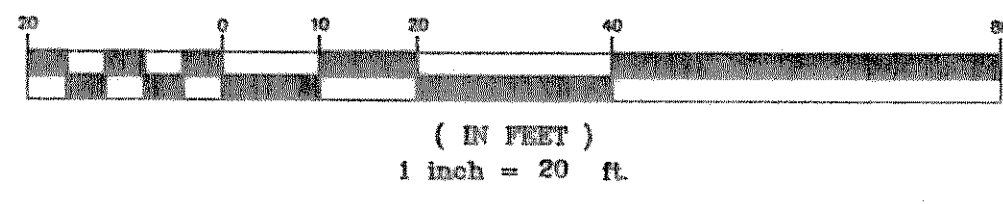
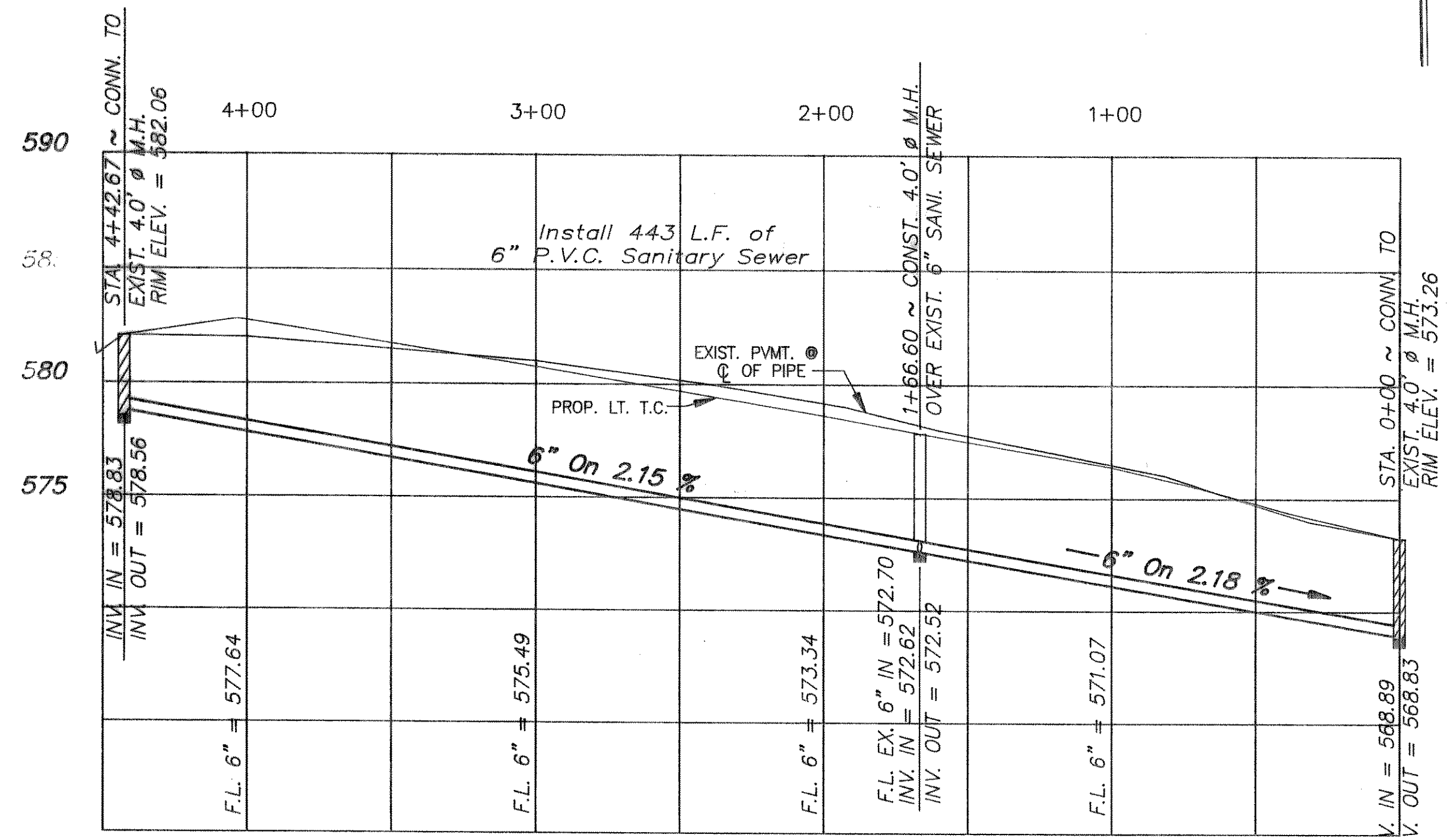
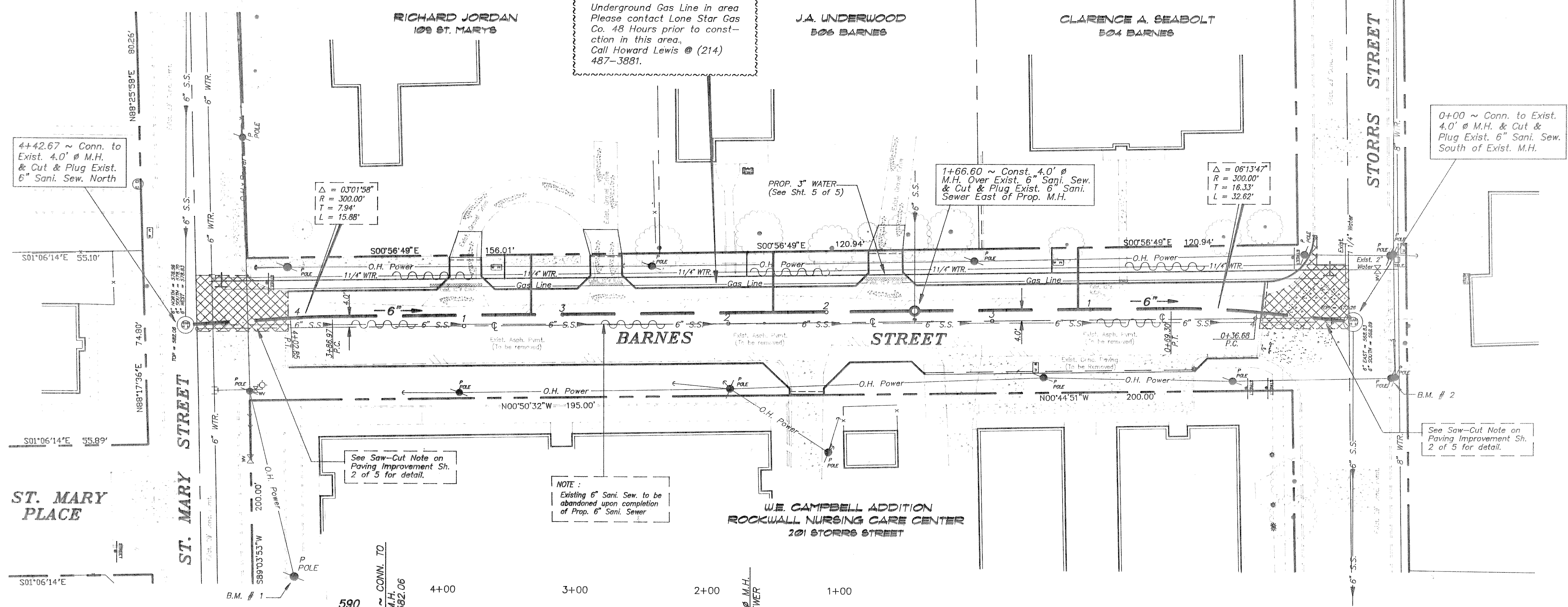


GRAPHIC SCALE



CAUTION :
Underground Gas Line in area
Please contact Lone Star Gas
Co. 48 Hours prior to consti-
tution in this area.
Call Howard Lewis @ (214)
487-3881.



PROFILE SCALE :
1" = 40' HORIZ. & 1" = 5' VERT.

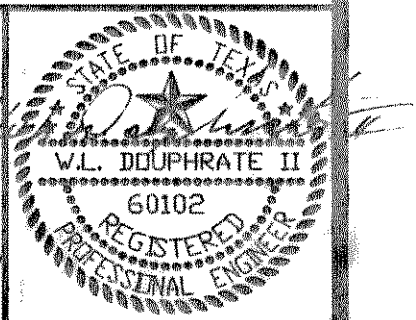
B.M. NO. 1 :
R.R. SPIKE IN POWER POLE, NORTH
SIDE OF ST. MARY ST., 100'± EAST
OF BARNES ST. ELEV. = 578.69

B.M. NO. 2 :
R.R. SPIKE IN POWER POLE, NORTH
SIDE OF STORRS ST., 20' EAST OF
C. OF BARNES ST. ELEV. = 574.23

SEWER LINE IMPROVEMENTS
BARNES STREET
ROCKWALL, TEXAS
CITY OF ROCKWALL
"THE NEW HORIZON"

REVISION NO.	REMARKS	DATE

DESIGNED:	B.W.H.	THE SEAL APPEARING ON THIS DOCUMENT WAS AUTHORIZED BY W.L. DOUPHRETE II TEXAS P.E. NO. 60102 ON 4/15/93
DRAWN:	ACAD	
JOB NO.		DATE: 1/93
		SHEET NO. 4 OF 5



0+00 ~ Conn. to Exist.
4.0' Ø M.H. & Cut &
Plug Exist. 6" Sani. Sew.
South of Exist. M.H.

See Saw-Cut Note on
Paving Improvement Sh.
2 of 5 for detail.

See Saw-Cut Note on
Paving Improvement Sh.
2 of 5 for detail.

NOTE :
Existing 6" Sani. Sew. to be
abandoned upon completion
of Prop. 6" Sani. Sewer

4+42.67 ~ Conn. to
Exist. 4.0' Ø M.H.
& Cut & Plug Exist.
6" Sani. Sew. North