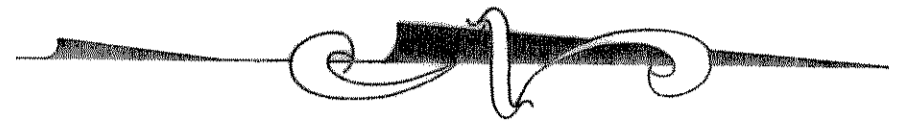
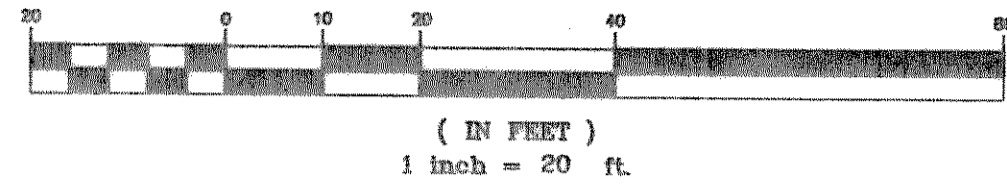
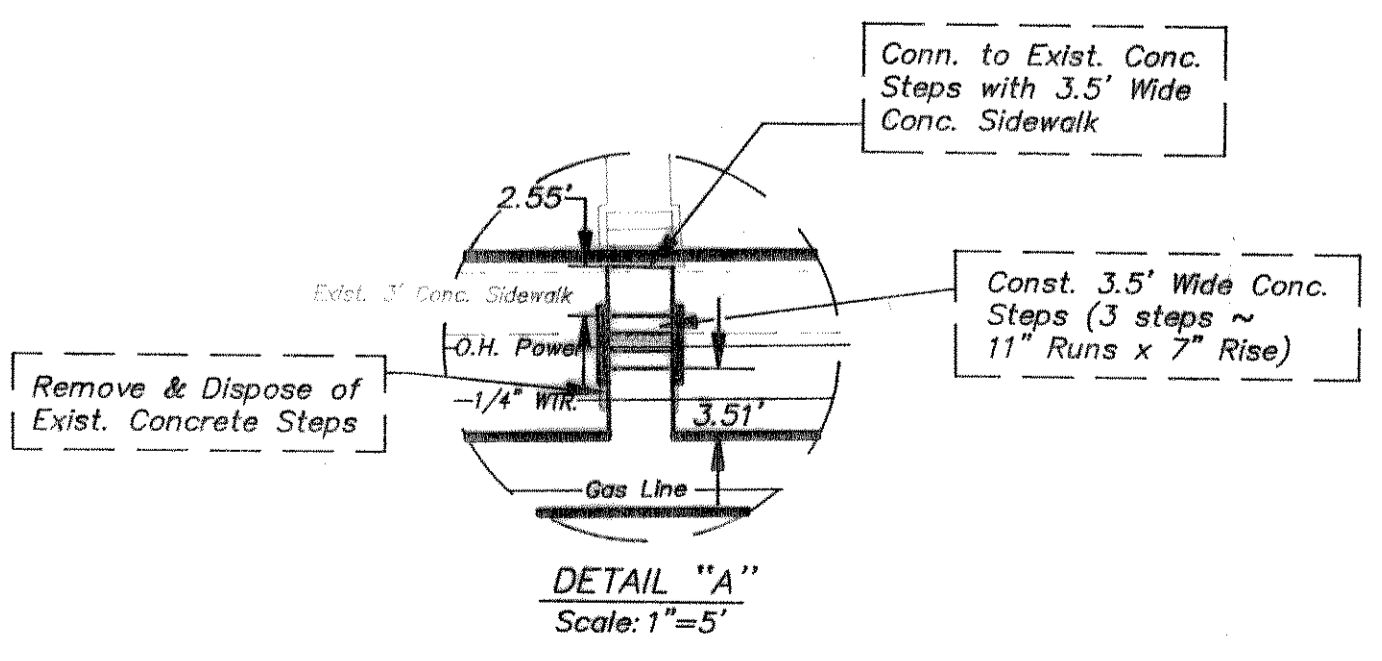
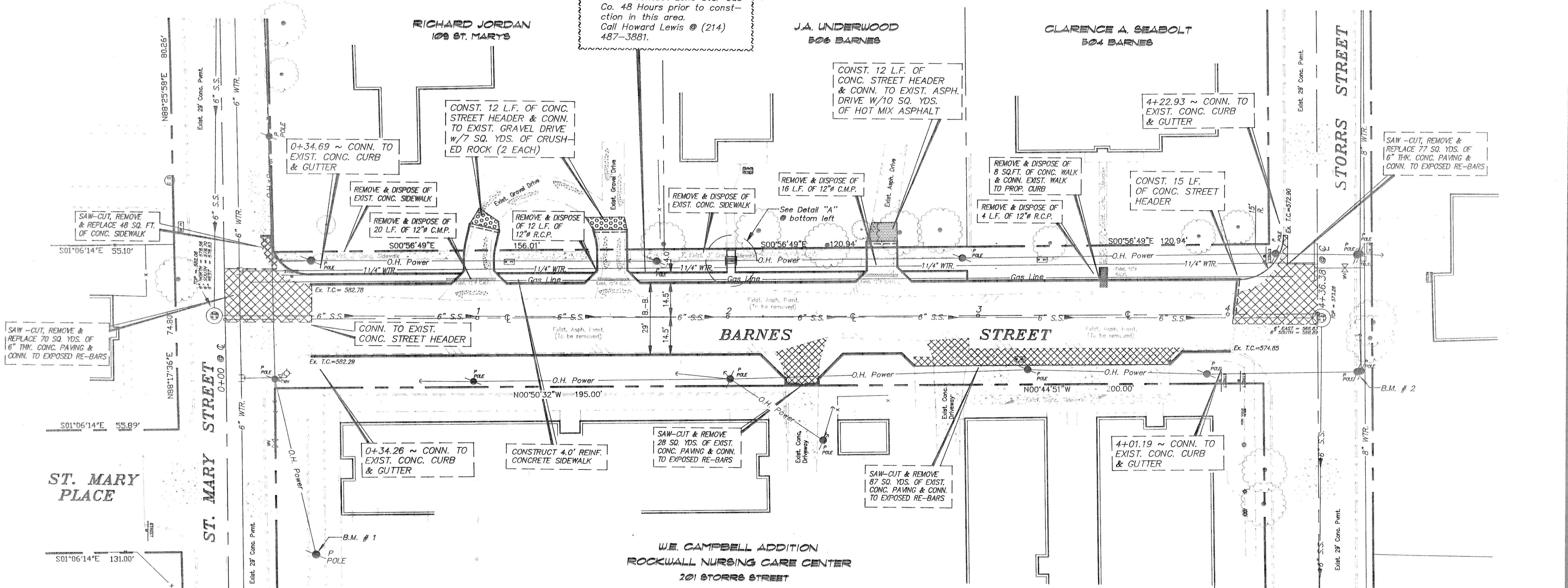


GRAPHIC SCALE



CAUTION:
Underground Gas Line in area
Please contact Lone Star Gas
Co. 48 Hours prior to const-
ruction in this area.
Call Howard Lewis @ (214)
487-3881.



B.M. NO. 1 :
R.R. SPIKE IN POWER POLE, NORTH
SIDE OF ST. MARY ST., 100'± EAST
OF BARNES ST. ELEV. = 578.69

B.M. NO. 2 :
R.R. SPIKE IN POWER POLE, NORTH
SIDE OF STORRS ST., 20' EAST OF
C. OF BARNES ST. ELEV. = 574.23

PAVING IMPROVEMENTS	
BARNES STREET	
ROCKWALL, TEXAS	
CITY OF ROCKWALL "THE NEW HORIZON"	
DESIGNED: B.W.H.	THE SEAL APPEARING ON THIS DOCUMENT WAS AUTHORIZED BY W.L. DOUPHRATE II TEXAS P.E. 60102 ON 4/15/93
DRAWN: ACAD	DATE: 2/93
JOB NO.	SHEET NO. 2 OF 5

REVISION NO	REMARKS	DATE

