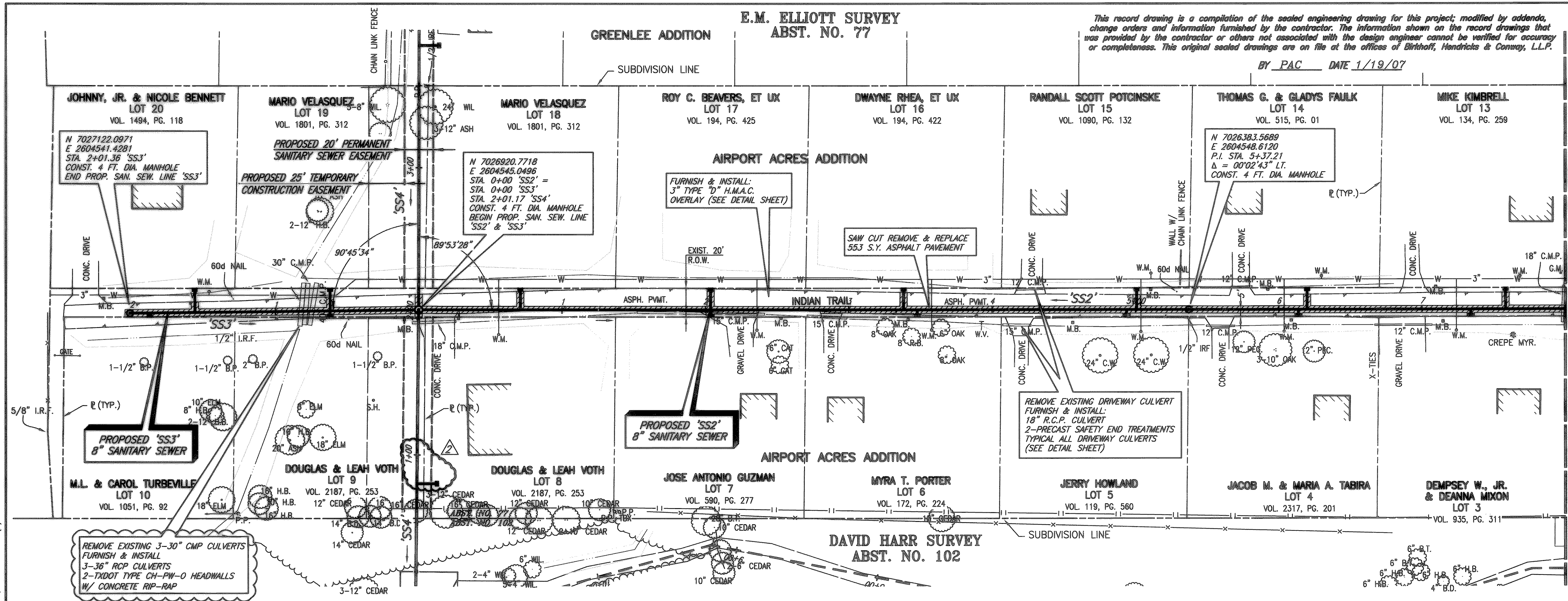
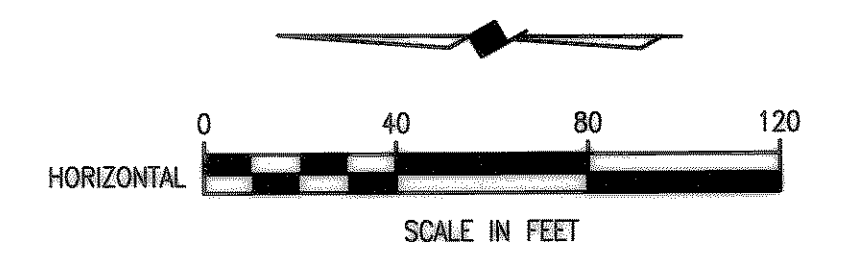


E.M. ELLIOTT SURVEY  
ABST. NO. 77

This record drawing is a compilation of the sealed engineering drawing for this project, modified by addenda, change orders and information furnished by the contractor. The information shown on the record drawings that was provided by the contractor or others not associated with the design engineer cannot be verified for accuracy or completeness. This original sealed drawings are on file at the offices of Birkhoff, Hendricks & Conway, L.L.P.

BY PAC DATE 1/19/07



SANITARY SEWER SERVICES	
LOCATION	PROP. 4" SERVICES (L.F.)
STA. 0+61.75 (SS3)	16' EAST, 4.5' WEST
STA. 1+56.05 (SS3)	17' EAST
STA. 1+87.69 (SS3)	3' WEST
STA. 0+70.93 (SS2)	15' EAST
STA. 2+03.68 (SS2)	15' EAST, 5' WEST
STA. 3+38.32 (SS2)	15' EAST
STA. 3+38.32 (SS2)	5' WEST
STA. 4+93.88 (SS2)	5' WEST
STA. 5+00.82 (SS2)	15' EAST
STA. 6+13.78 (SS2)	5' WEST
STA. 6+19.84 (SS2)	15' EAST
STA. 7+34.03 (SS2)	5' WEST
STA. 7+58.27 (SS2)	15' EAST

FURNISH & INSTALL:  
1-8"x4" WYE  
4" P.V.C. WASTEWATER LATERAL CONNECTION

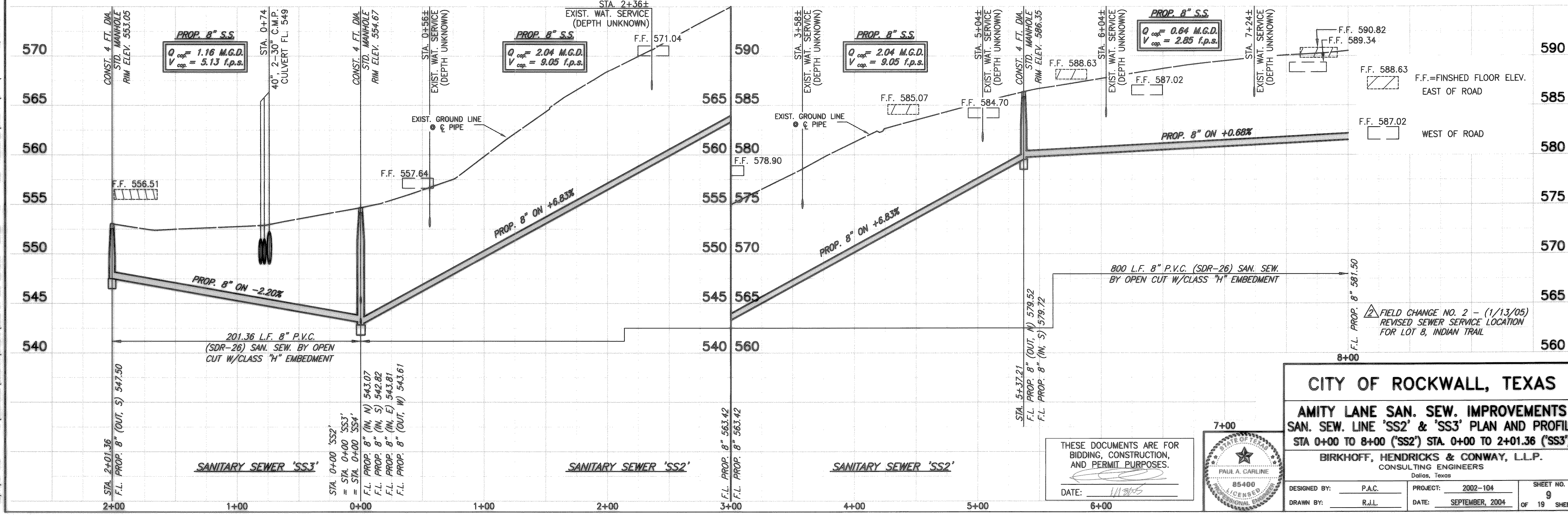
CITY OF ROCKWALL BENCHMARK  
R016  
ELEV. 558.719

T.B.M. 346  
SANITARY SEWER MANHOLE RIM AT  
SAN. SEW. LINE 'SS1' STA. 0+00  
N 7024055.4568, E 2601761.3699  
ELEV. 559.52

T.B.M. 101  
60d NAIL ON NORTH SIDE OF AIRPORT ROAD,  
SAN. SEW. LINE 'SS1' STA. 39+24.9 38.30' LT.  
N 7025851.5998, E 2604704.5991  
ELEV. 589.49

T.B.M. 100  
S.W.B. MANHOLE RIM NORTH SIDE OF AIRPORT ROAD,  
SAN. SEW. LINE 'SS1' STA. 64+33.53, 47.06' LT.  
N 7025889.4352, E 2607135.3028  
ELEV. 607.63

These plans and related specifications were prepared for construction of this specific project only. Reuse of these documents is not permitted without written authorization of Birkhoff, Hendricks & Conway, L.L.P.



CITY OF ROCKWALL, TEXAS

AMITY LANE SAN. SEW. IMPROVEMENTS  
SAN. SEW. LINE 'SS2' & 'SS3' PLAN AND PROFILE  
STA 0+00 TO 8+00 ('SS2') STA. 0+00 TO 2+01.36 ('SS3')

BIRKHOFF, HENDRICKS & CONWAY, L.L.P.  
CONSULTING ENGINEERS  
Dallas, Texas

DESIGNED BY: P.A.C. PROJECT: 2002-104  
DRAWN BY: R.J.L. DATE: SEPTEMBER, 2004

THESE DOCUMENTS ARE FOR BIDDING, CONSTRUCTION, AND PERMIT PURPOSES.  
DATE: 1/19/07

PAUL A. CARLINE  
85400  
LICENSED PROFESSIONAL ENGINEER

SHEET NO. 9 OF 19 SHEETS

09/14/04 KAB H:\ROCKWALL\2002\04\SHEETS\2002\04-SSB-S2A.DWG SCALE: 1"=40' XREF: ROCKWALL\2002\04\BASE\TOPO-BASE.MASTER SURVEY, SanSewSS1 Rev(2)