

N 7025841.8929
E 2606990.6841
STA. 0+00 SAN. SEW. LINE 'SS7' =
STA. 62+09.67 SAN. SEW. LINE 'SS1'
CONSTRUCT 4' DIA. STD. MANHOLE

RELOCATE
2-1" PEAR TREES
1-1" PEACH TREES
(BY OTHERS)

N 7026152.5628, E. 2606987.2132
STA. 3+10.69
FURNISH & INSTALL:
1-STD. SANITARY SEWER CLEANOUT

CAL GARY
TRACT 26-2
VOL. 957, PG. 88

JAMES R. JUNOD
AND WIFE
HELLEN M. JUNOD
TRACT 6
VOL. 117, PG. 757

RED LOMAS BOOZE
AND WIFE
BONNIE MAY BOOZE
TRACT 4
VOL. 89, PG. 78

FURNISH & INSTALL:
2- SANITARY SEWER SERVICES
(LOCATE AT OWNERS DIRECTION)

F.M. 549

CITY OF ROCKWALL BENCHMARK
R016
ELEV. 558.719

T.B.M. 346
SANITARY SEWER MANHOLE RIM AT
SAN. SEW. LINE 'SS1' STA. 0+00
N 7024055.4568, E 2601761.3699
ELEV. 558.52

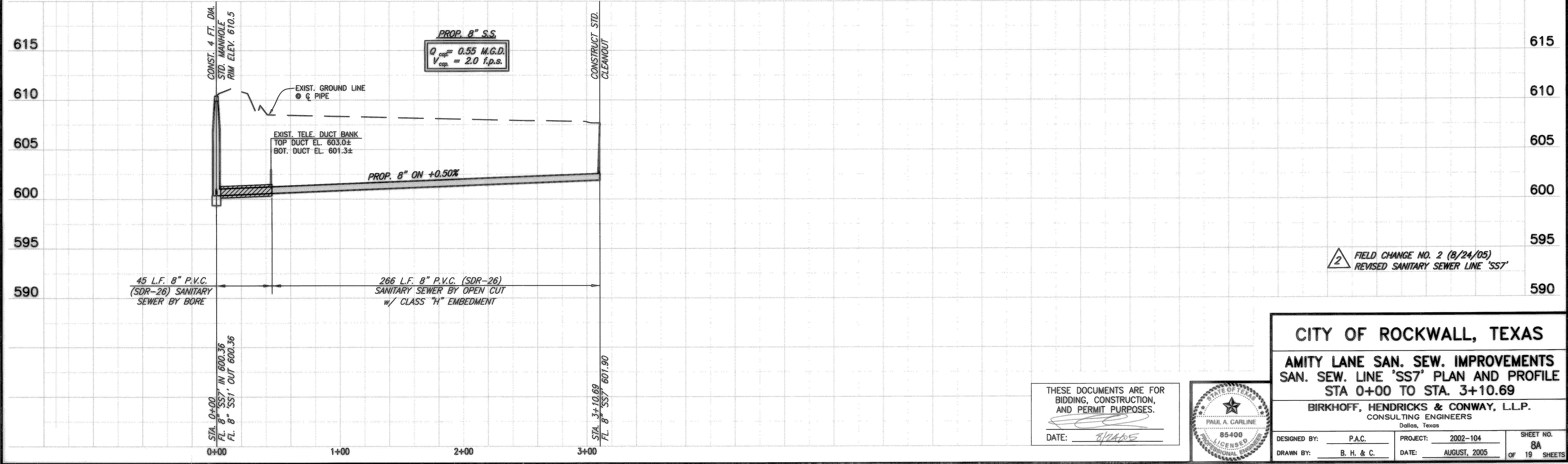
T.B.M. 101
60D NAIL ON NORTH SIDE OF AIRPORT ROAD,
SAN. SEW. LINE 'SS1' STA. 39+24.9, 38.30' LT.
N 7025851.5998, E 2604704.5991
ELEV. 589.49

T.B.M. 100
S.W.B. MANHOLE RIM NORTH SIDE OF AIRPORT ROAD,
SAN. SEW. LINE 'SS1' STA. 64+33.53, 47.06' LT.
N 7025889.4352, E 2607135.3028
ELEV. 607.63

This record drawing is a compilation of the sealed engineering drawing for this project; modified by addenda, change orders and information furnished by the contractor. The information shown on the record drawings that was provided by the contractor or others not associated with the design engineer cannot be verified for accuracy or completeness. This original sealed drawings are on file at the offices of Birkhoff, Hendricks & Conway, L.L.P.

BY PAC DATE 1/19/07

These plans and related specifications were prepared for construction of this specific project only. Reuse of these documents is not permitted without written authorization of Birkhoff, Hendricks & Conway, L.L.P.

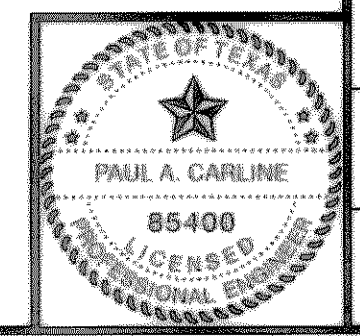


2 FIELD CHANGE NO. 2 (8/24/05)
REVISED SANITARY SEWER LINE 'SS7'

CITY OF ROCKWALL, TEXAS
AMITY LANE SAN. SEW. IMPROVEMENTS
SAN. SEW. LINE 'SS7' PLAN AND PROFILE
STA 0+00 TO STA. 3+10.69

BIRKHOFF, HENDRICKS & CONWAY, L.L.P.
CONSULTING ENGINEERS
Dallas, Texas

THESE DOCUMENTS ARE FOR
BIDDING, CONSTRUCTION,
AND PERMIT PURPOSES.
DATE: 8/24/05



DESIGNED BY: P.A.C.	PROJECT: 2002-104	SHEET NO. 8A
DRAWN BY: B. H. & C.	DATE: AUGUST, 2005	OF 19 SHEETS

9/01/05 164B H:\PROJECTS\ROCKWALL\2002\104\SHEETS\2002\104-SS8.dwg