

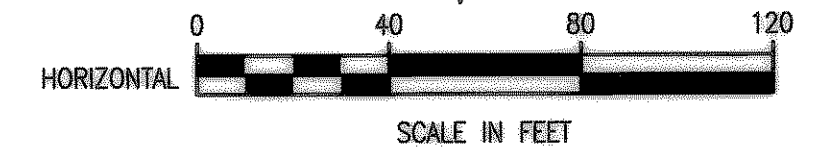
E.M. ELLIOTT SURVEY
ABST. NO. 77

JAMES R. JUNOD
AND WIFE,
HELLEN M. JUNOD
TRACT 6
VOL. 117, PG. 757

QUIDA RUTH SPRINGER
TRACT 25
VOL. 75, PG. 59

This record drawing is a compilation of the sealed engineering drawing for this project; modified by addenda, change orders and information furnished by the contractor. The information shown on the record drawings that was provided by the contractor or others not associated with the design engineer cannot be verified for accuracy or completeness. This original sealed drawings are on file at the offices of Birkhoff, Hendricks & Conway, L.L.P.

BY PAC DATE 1/19/07



MATCH LINE STA. 60+00

SANITARY SEWER SERVICES	
LOCATION	PROP. 4" SERVICES (L.F.)
STA. 61+69.46 (SS1)	6.5' SOUTH
STA. 63+43.52 (SS1)	28.5' NORTH

FURNISH & INSTALL:
1-8" x 4" WYE
4" P.V.C. WASTEWATER LATERAL CONNECTION

CITY OF ROCKWALL BENCHMARK
R016
ELEV. 558.719

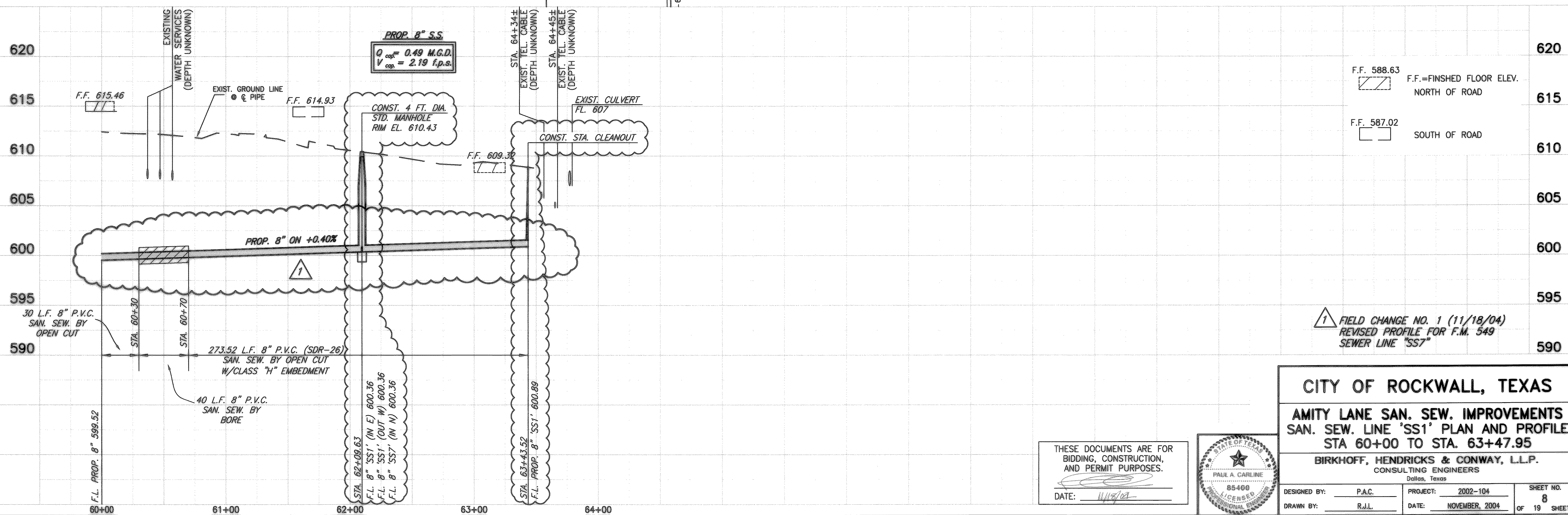
T.B.M. 346
SANITARY SEWER MANHOLE RIM AT
SAN. SEW. LINE 'SS1' STA. 0+00
N 7024055.4568, E 2601761.3699
ELEV. 559.52

T.B.M. 101
60D NAIL ON NORTH SIDE OF AIRPORT ROAD,
SAN. SEW. LINE 'SS1' STA. 39+24.9, 38.30' LT.
N 7025851.5998, E 2604704.5991
ELEV. 589.49

T.B.M. 100
S.W.B. MANHOLE RIM NORTH SIDE OF AIRPORT ROAD,
SAN. SEW. LINE 'SS1' STA. 64+33.53, 47.06' LT.
N 7025889.4352, E 2607135.3028
ELEV. 607.63

These plans and related specifications were prepared for construction of this specific project only. Reuse of these documents is not permitted without written authorization of Birkhoff, Hendricks & Conway, L.L.P.

H: ROCKWALL \2002104\BASE\TOPO-BASE_MASTER SURVEY_SanSewSS1 Rev(2) SCALE: 1"=40' XREF: ROCKWALL \2002104\BASE\TOPO-BASE_MASTER SURVEY_SanSewSS1 Rev(2) 11/17/04 K4B

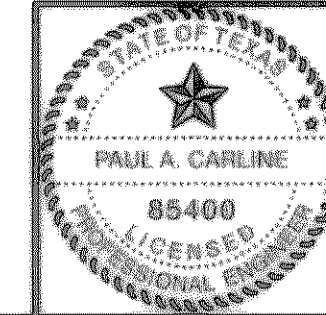


FIELD CHANGE NO. 1 (11/18/04)
REVISED PROFILE FOR F.M. 549
SEWER LINE "SS7"

CITY OF ROCKWALL, TEXAS
AMITY LANE SAN. SEW. IMPROVEMENTS
SAN. SEW. LINE 'SS1' PLAN AND PROFILE
STA 60+00 TO STA. 63+47.95

BIRKHOFF, HENDRICKS & CONWAY, L.L.P.
CONSULTING ENGINEERS
Dallas, Texas

THESE DOCUMENTS ARE FOR
BIDDING, CONSTRUCTION,
AND PERMIT PURPOSES.
DATE: 1/19/07



DESIGNED BY: PAC	PROJECT: 2002-104	SHEET NO. 8
DRAWN BY: R.J.L.	DATE: NOVEMBER, 2004	OF 19 SHEETS