

R.G. STEPHENS, JOSEPH FUNK AND
J.E. OVERALL, JR.
TRACT 26
VOL. 97, PG. 420

E.M. ELLIOTT SURVEY
ABST. NO. 77

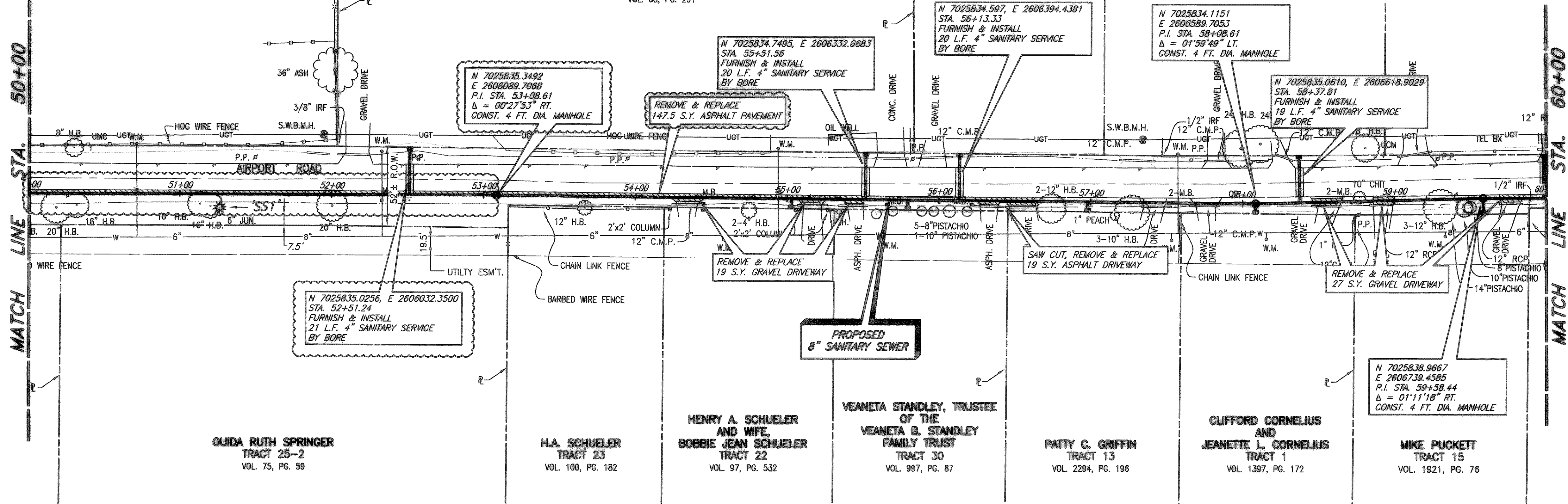
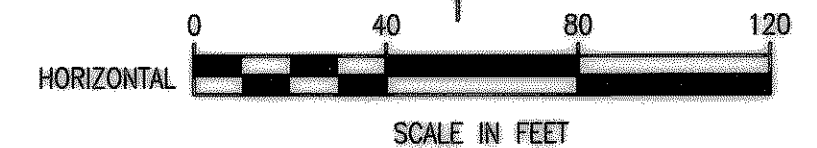
J.E. PARKER AND WIFE,
DELORIS ESTELL PARKER
TRACT 18 & 19
VOL. 68, PG. 291

WILL H. DOUGLAS
TRACT 17
VOL. 1525, PG. 60

BILLY W. PEOPLES
TRACT 12
VOL. 1464, PG. 321

This record drawing is a compilation of the sealed engineering drawing for this project, modified by addenda, change orders and information furnished by the contractor. The information shown on the record drawings that was provided by the contractor or others not associated with the design engineer cannot be verified for accuracy or completeness. This original sealed drawings are on file at the offices of Birkhoff, Hendricks & Conway, L.L.P.

BY PAC DATE 1/19/07



SANITARY SEWER SERVICES	
LOCATION	PROP. 4" SERVICES (L.F.)
STA. 52+51.24 (SS1)	21' NORTH
STA. 55+02.81 (SS1)	6.5' SOUTH
STA. 55+51.56 (SS1)	20' NORTH
STA. 55+79.52 (SS1)	6.5' SOUTH
STA. 56+13.33 (SS1)	20' NORTH
STA. 56+97.94 (SS1)	6.5' SOUTH
STA. 58+08.61 (SS1)	6.5' SOUTH
STA. 58+37.81 (SS1)	19' NORTH
STA. 59+58.44 (SS1)	10' SOUTH
STA. 59+98.39 (SS1)	29' NORTH

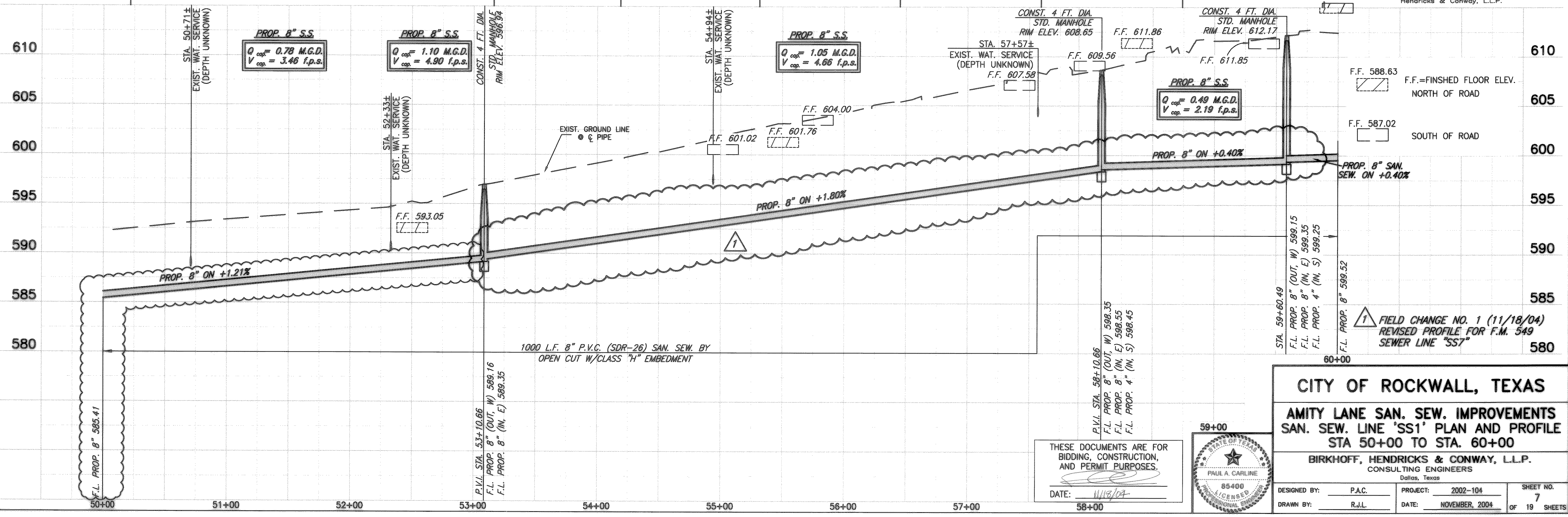
FURNISH & INSTALL:
1-8"x4" WYE
4" P.V.C. WASTEWATER
LATERAL CONNECTION

CITY OF ROCKWALL BENCHMARK
R016
ELEV. 558.719

T.B.M. 346
SANITARY SEWER MANHOLE RIM AT
SAN. SEW. LINE 'SS1' STA. 0+00
N 7024055.4568, E 2601761.3699
ELEV. 559.52

T.B.M. 101
60D NAIL ON NORTH SIDE OF AIRPORT ROAD,
SAN. SEW. LINE 'SS1' STA. 39+24.9, 38.30' LT.
N 7025851.5998, E 2604704.5991
ELEV. 589.49

T.B.M. 100
S.W.B. MANHOLE RIM NORTH SIDE OF AIRPORT ROAD,
SAN. SEW. LINE 'SS1' STA. 64+33.53, 47.06' LT.
N 7025889.4352, E 2607135.3028
ELEV. 607.63



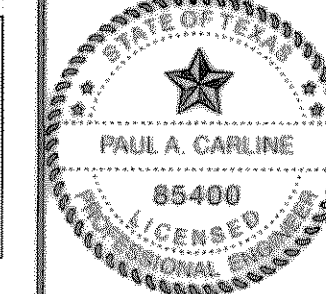
CITY OF ROCKWALL, TEXAS
AMITY LANE SAN. SEW. IMPROVEMENTS
SAN. SEW. LINE 'SS1' PLAN AND PROFILE
STA 50+00 TO STA. 60+00

BIRKHOFF, HENDRICKS & CONWAY, L.L.P.
CONSULTING ENGINEERS
Dallas, Texas

DESIGNED BY: P.A.C. PROJECT: 2002-104 SHEET NO. 7
DRAWN BY: R.J.L. DATE: NOVEMBER, 2004 OF 19 SHEETS

THESE DOCUMENTS ARE FOR
BIDDING, CONSTRUCTION,
AND PERMIT PURPOSES.

DATE: 1/19/07



11/18/04 KAB H:\ROCKWALL\2002\104\SS1\SS1.DWG SCALE: 1"=40' XREF: ROCKWALL\2002\104\BASE\TOP-BASE_MASTER SURVEY_SunSeWSS1 Rev(2)