

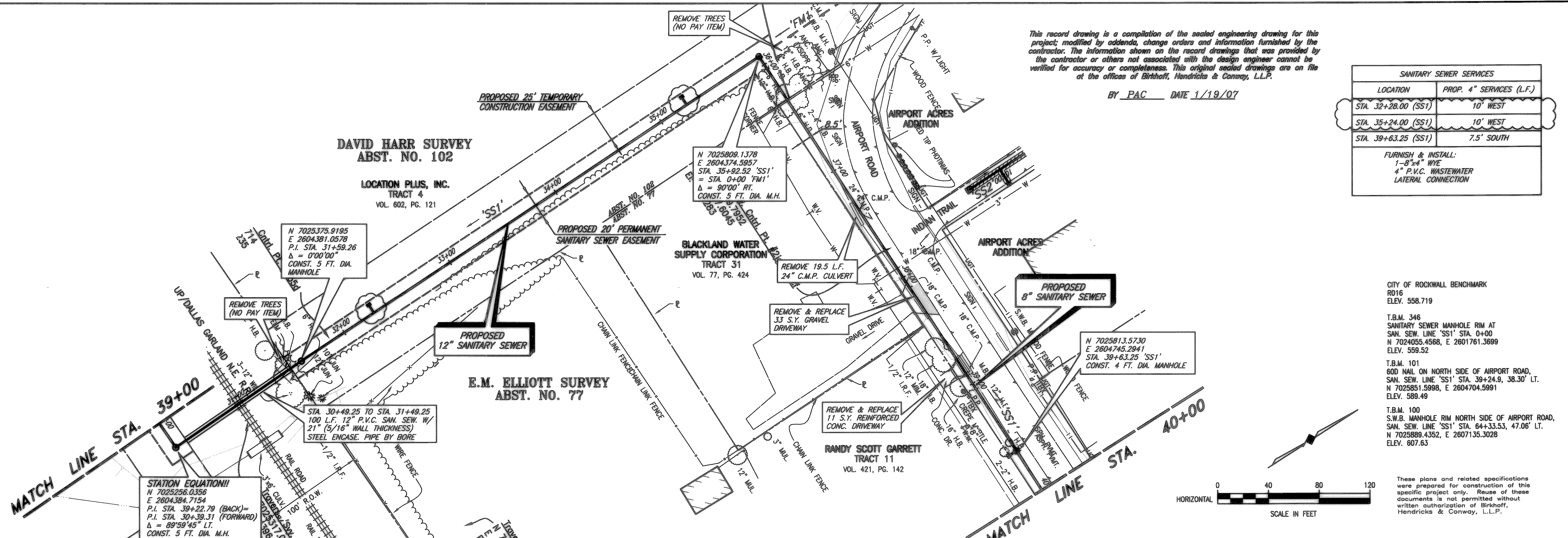
09/14/04 KAB H: ROCKWALL \2002\04\BASE\TOPO-BASE MASTER SURVEY, SanSewSS1 Rev(2) XREF: ROCKWALL \2002\04\BASE\TOPO-BASE MASTER SURVEY, SanSewSS1 Rev(2) SCALE: 1"=40'

This record drawing is a compilation of the sealed engineering drawing for this project, modified by addenda, change orders and information furnished by the contractor. The information shown on the record drawings that was provided by the contractor or others not associated with the design engineer cannot be verified for accuracy or completeness. This original sealed drawings are on file at the offices of Birkhoff, Hendricks & Conway, L.L.P.

BY PAC DATE 1/19/07

SANITARY SEWER SERVICES	
LOCATION	PROP. 4" SERVICES (L.F.)
STA. 32+28.00 (SS1)	10' WEST
STA. 35+24.00 (SS1)	10' WEST
STA. 39+63.25 (SS1)	7.5' SOUTH

FURNISH & INSTALL:
 1-8"x4" WYE
 4" P.V.C. WASTEWATER LATERAL CONNECTION

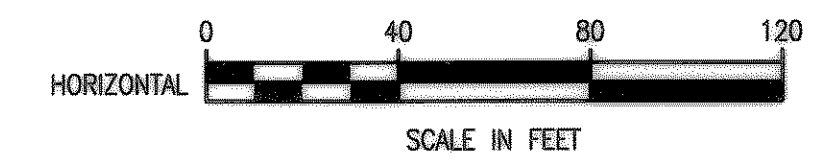


CITY OF ROCKWALL BENCHMARK
 R016
 ELEV. 558.719

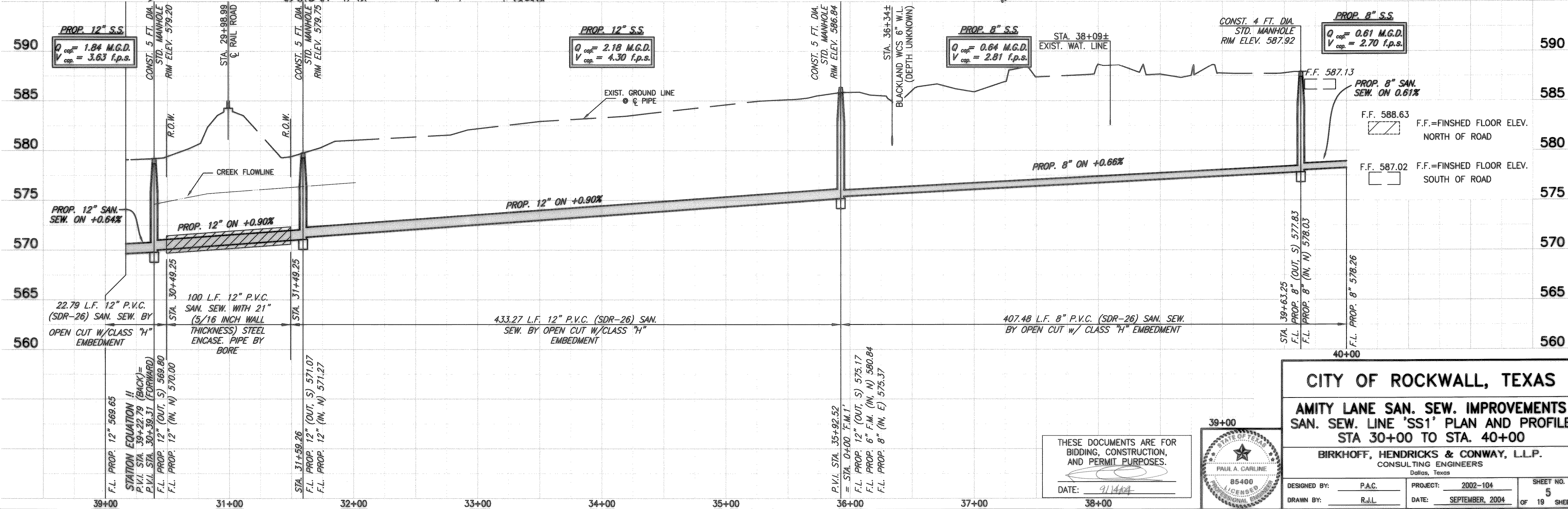
 T.B.M. 346
 SANITARY SEWER MANHOLE RIM AT
 SAN. SEW. LINE 'SS1' STA. 0+00
 N 7024055.4568, E 2601761.3699
 ELEV. 559.52

 T.B.M. 101
 600 NAIL ON NORTH SIDE OF AIRPORT ROAD,
 SAN. SEW. LINE 'SS1' STA. 39+24.9, 38.30' LT.
 N 7025851.5998, E 2604704.5991
 ELEV. 589.49

 T.B.M. 100
 S.W.B. MANHOLE RIM NORTH SIDE OF AIRPORT ROAD,
 SAN. SEW. LINE 'SS1' STA. 64+33.53, 47.06' LT.
 N 7025889.4352, E 2607135.3028
 ELEV. 607.63



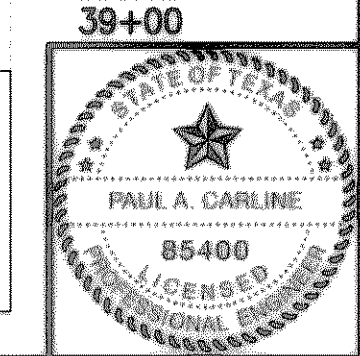
These plans and related specifications were prepared for construction of this specific project only. Reuse of these documents is not permitted without written authorization of Birkhoff, Hendricks & Conway, L.L.P.



CITY OF ROCKWALL, TEXAS
AMITY LANE SAN. SEW. IMPROVEMENTS
SAN. SEW. LINE 'SS1' PLAN AND PROFILE
STA 30+00 TO STA. 40+00

BIRKHOFF, HENDRICKS & CONWAY, L.L.P.
 CONSULTING ENGINEERS
 Dallas, Texas

THESE DOCUMENTS ARE FOR
 BIDDING, CONSTRUCTION,
 AND PERMIT PURPOSES.
 DATE: 9/14/07



DESIGNED BY: PAC PROJECT: 2002-104 SHEET NO. 5
 DRAWN BY: R.J.L. DATE: SEPTEMBER, 2004 OF 19 SHEETS