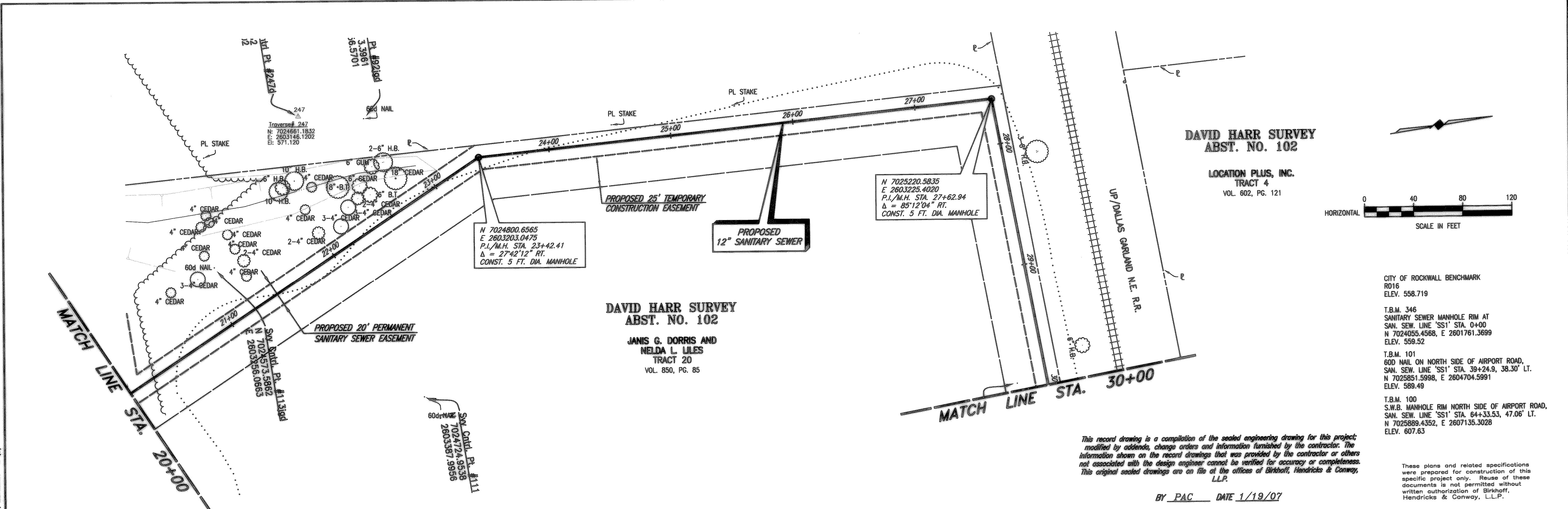
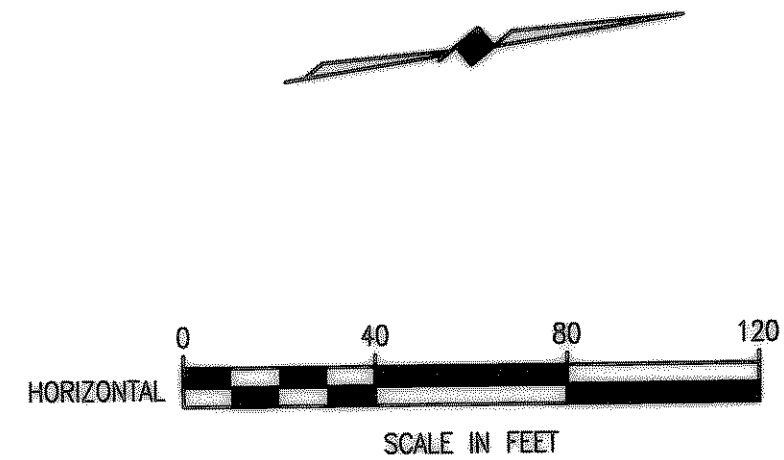


09/14/04 KAB H:\ROCKWALL\2002\104\SHEETS\2002\104-SS2A.DWG SCALE: 1"=40' XREF: ROCKWALL\2002\104\BASE\TOPO-BASE\_MASTER SURVEY\_SanSeWSS1 Rev(2)



**DAVID HARR SURVEY  
ABST. NO. 102**

LOCATION PLUS, INC.  
TRACT 4  
VOL. 602, PG. 121



CITY OF ROCKWALL BENCHMARK  
R016  
ELEV. 558.719

T.B.M. 346  
SANITARY SEWER MANHOLE RIM AT  
SAN. SEW. LINE 'SS1' STA. 0+00  
N 7024055.4568, E 2601761.3699  
ELEV. 559.52

T.B.M. 101  
60d NAIL ON NORTH SIDE OF AIRPORT ROAD,  
SAN. SEW. LINE 'SS1' STA. 39+24.9, 38.30' LT.  
N 7025851.5998, E 2604704.5991  
ELEV. 589.49

T.B.M. 100  
S.W.B. MANHOLE RIM NORTH SIDE OF AIRPORT ROAD,  
SAN. SEW. LINE 'SS1' STA. 64+33.53, 47.06' LT.  
N 7025889.4352, E 2607135.3028  
ELEV. 607.63

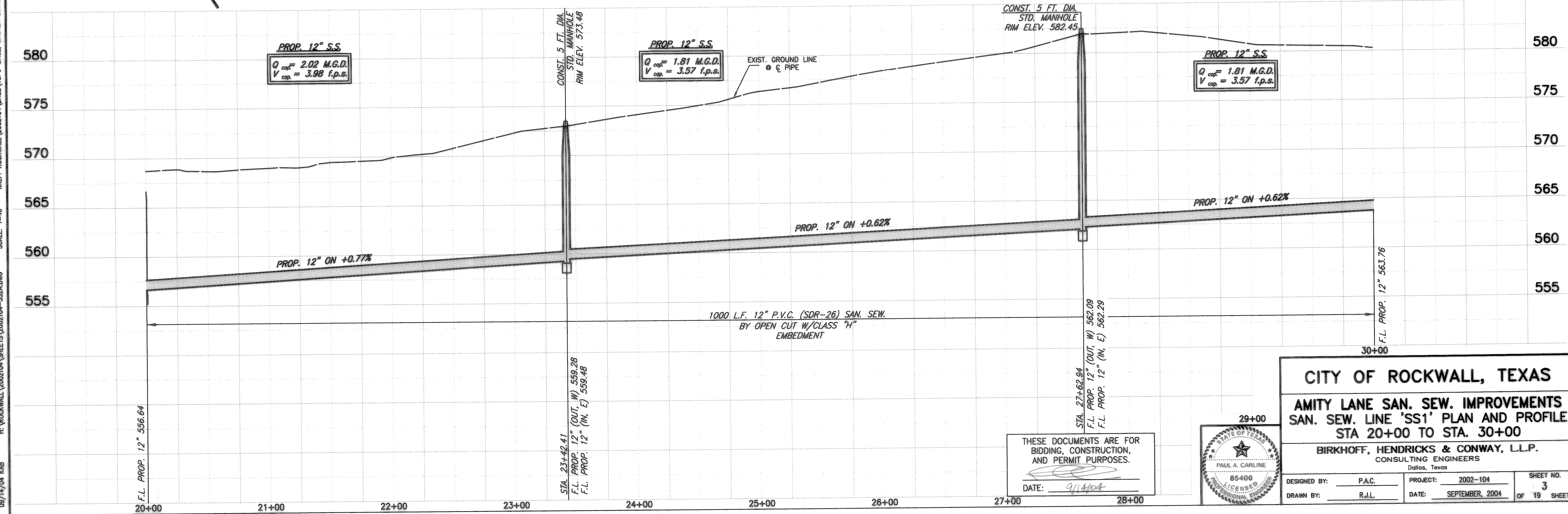
**DAVID HARR SURVEY  
ABST. NO. 102**

JANIS G. DORRIS AND  
NELDA L. LILES  
TRACT 20  
VOL. 850, PG. 85

*This record drawing is a compilation of the sealed engineering drawing for this project, modified by addenda, change orders and information furnished by the contractor. The information shown on the record drawings that was provided by the contractor or others not associated with the design engineer cannot be verified for accuracy or completeness. This original sealed drawings are on file at the offices of Birkhoff, Hendricks & Conway, L.L.P.*

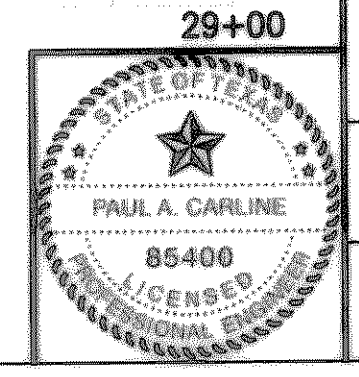
*These plans and related specifications were prepared for construction of this specific project only. Reuse of these documents is not permitted without written authorization of Birkhoff, Hendricks & Conway, L.L.P.*

BY PAC DATE 1/19/07



**CITY OF ROCKWALL, TEXAS**  
**AMITY LANE SAN. SEW. IMPROVEMENTS**  
**SAN. SEW. LINE 'SS1' PLAN AND PROFILE**  
**STA 20+00 TO STA. 30+00**

**BIRKHOFF, HENDRICKS & CONWAY, L.L.P.**  
CONSULTING ENGINEERS  
Dallas, Texas



THESE DOCUMENTS ARE FOR  
BIDDING, CONSTRUCTION,  
AND PERMIT PURPOSES.

DATE: 9/14/04

DESIGNED BY: P.A.C. PROJECT: 2002-104 SHEET NO. 3  
DRAWN BY: R.J.L. DATE: SEPTEMBER, 2004 OF 19 SHEETS