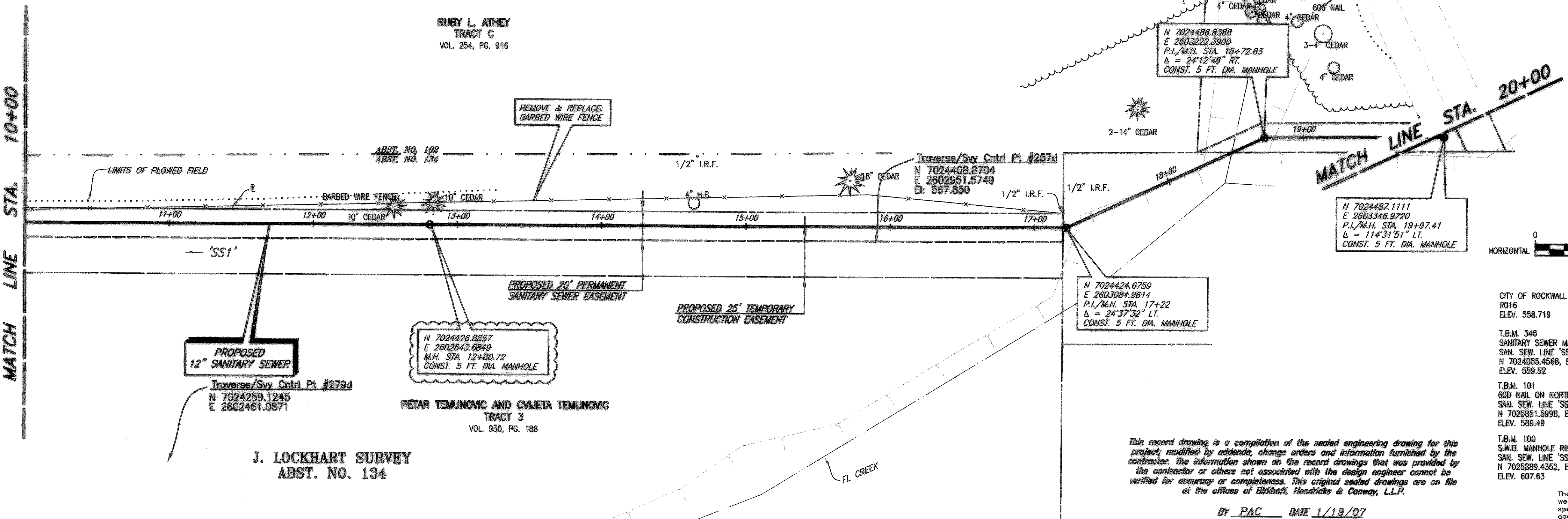


DAVID HARR SURVEY  
ABST. NO. 102

RUBY L. ATHEY  
TRACT C  
VOL. 254, PG. 916

El: 571.120

MATCH LINE STA. 10+00



PROPOSED  
12" SANITARY SEWER  
Traverse/Svy Cntrl Pt #279d  
N 7024259.1245  
E 2602461.0871

N 7024426.8857  
E 2602643.6849  
M.H. STA. 12+80.72  
CONST. 5 FT. DIA. MANHOLE

PETAR TEMUNOVIC AND CVAJETA TEMUNOVIC  
TRACT 3  
VOL. 930, PG. 188

J. LOCKHART SURVEY  
ABST. NO. 134

Traverse/Svy Cntrl Pt #257d  
N 7024408.8704  
E 2602951.5749  
El: 567.850

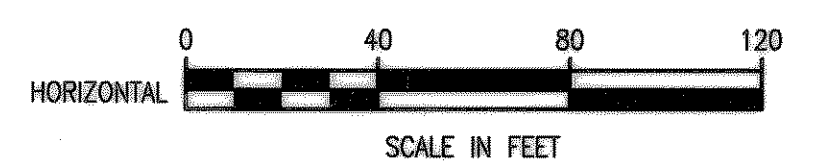
N 7024424.6759  
E 2603084.9614  
P.I./M.H. STA. 17+22  
Δ = 24°37'32" LT.  
CONST. 5 FT. DIA. MANHOLE

N 7024488.8388  
E 2603222.3900  
P.I./M.H. STA. 18+72.83  
Δ = 24°12'48" RT.  
CONST. 5 FT. DIA. MANHOLE

N 7024487.1111  
E 2603346.9720  
P.I./M.H. STA. 19+97.41  
Δ = 114°31'51" LT.  
CONST. 5 FT. DIA. MANHOLE

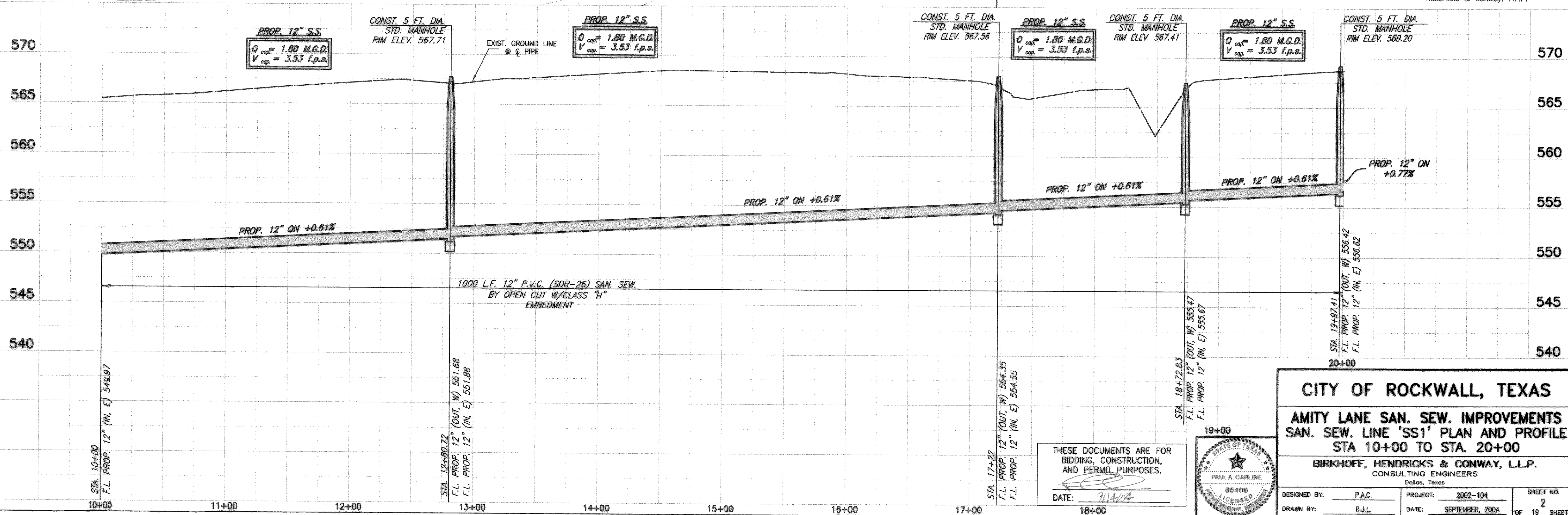
This record drawing is a compilation of the sealed engineering drawing for this project, modified by addenda, change orders and information furnished by the contractor. The information shown on the record drawings that was provided by the contractor or others not associated with the design engineer cannot be verified for accuracy or completeness. This original sealed drawings are on file at the offices of Birkhoff, Hendricks & Conway, L.L.P.

BY PAC DATE 1/19/07

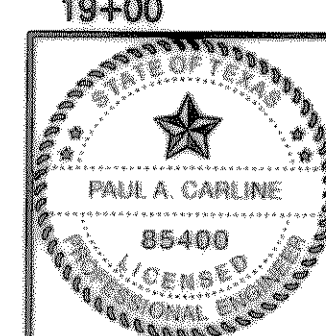


- CITY OF ROCKWALL BENCHMARK  
R016  
ELEV. 558.719
- T.B.M. 346  
SANITARY SEWER MANHOLE RIM AT  
SAN. SEW. LINE 'SS1' STA. 0+00  
N 7024055.4568, E 2601761.3699  
ELEV. 559.52
- T.B.M. 101  
60D NAIL ON NORTH SIDE OF AIRPORT ROAD,  
SAN. SEW. LINE 'SS1' STA. 39+24.9, 38.30' LT.  
N 7025851.5998, E 2604704.5991  
ELEV. 589.49
- T.B.M. 100  
S.W.B. MANHOLE RIM NORTH SIDE OF AIRPORT ROAD,  
SAN. SEW. LINE 'SS1' STA. 64+33.53, 47.06' LT.  
N 7025889.4352, E 2607135.3028  
ELEV. 607.63

These plans and related specifications were prepared for construction of this specific project only. Reuse of these documents is not permitted without written authorization of Birkhoff, Hendricks & Conway, L.L.P.



THESE DOCUMENTS ARE FOR  
BIDDING, CONSTRUCTION,  
AND PERMIT PURPOSES.  
DATE: 9/14/07



**CITY OF ROCKWALL, TEXAS**

**AMITY LANE SAN. SEW. IMPROVEMENTS**  
SAN. SEW. LINE 'SS1' PLAN AND PROFILE  
STA 10+00 TO STA. 20+00

**BIRKHOFF, HENDRICKS & CONWAY, L.L.P.**  
CONSULTING ENGINEERS  
Dallas, Texas

DESIGNED BY: P.A.C.	PROJECT: 2002-104	SHEET NO. 2
DRAWN BY: R.J.L.	DATE: SEPTEMBER, 2004	OF 19 SHEETS

09/14/04 KAB H:\ROCKWALL\2002104\SHEETS\2002104-SS2.DWG SCALE: 1"=40' XREF: ROCKWALL\2002104\BASE\TOPO-BASE.MASTER SURVEY, NEW-SS-51