

SANITARY SEWER SERVICES	
LOCATION	PROP. 4" SERVICES (L.F.)
STA. 0+85.07 (SS6)	39.5' EAST
STA. 1+00 (SS6)	21' WEST
STA. 1+50.73 (SS6)	21' WEST
STA. 1+75.78 (SS6)	39.5' EAST
STA. 0+52.28 (SS5)	39.5' EAST
STA. 1+13.58 (SS5)	21' WEST
STA. 1+66.69 (SS5)	39.5' EAST
STA. 2+77.82 (SS5)	39.5' EAST
STA. 3+28.09 (SS5)	21' WEST
STA. 3+52.83 (SS5)	21' WEST
STA. 3+97.92 (SS5)	39.5' EAST
STA. 5+41.67 (SS5)	39.5' EAST
STA. 5+67.29 (SS5)	21' WEST
STA. 5+93.47 (SS5)	21' WEST
STA. 6+74.78 (SS5)	39.5' EAST

FURNISH & INSTALL:
1-8"x4" WYE
4" P.V.C. WASTEWATER
LATERAL CONNECTION

CITY OF ROCKWALL BENCHMARK
R016
ELEV. 558.719

T.B.M. 346
SANITARY SEWER MANHOLE RIM AT
SAN. SEW. LINE 'SS1' STA. 0+00
N 7024055.4568, E 2601761.3699
ELEV. 559.52

T.B.M. 101
60D NAIL ON NORTH SIDE OF AIRPORT ROAD,
SAN. SEW. LINE 'SS1' STA. 39+24.9, 36.30' LT.
N 7025851.5998, E 2604704.5991
ELEV. 589.49

T.B.M. 100
S.W.B. MANHOLE RIM NORTH SIDE OF AIRPORT ROAD,
SAN. SEW. LINE 'SS1' STA. 64+33.53, 47.06' LT.
N 7025889.4352, E 2607135.3028
ELEV. 607.63

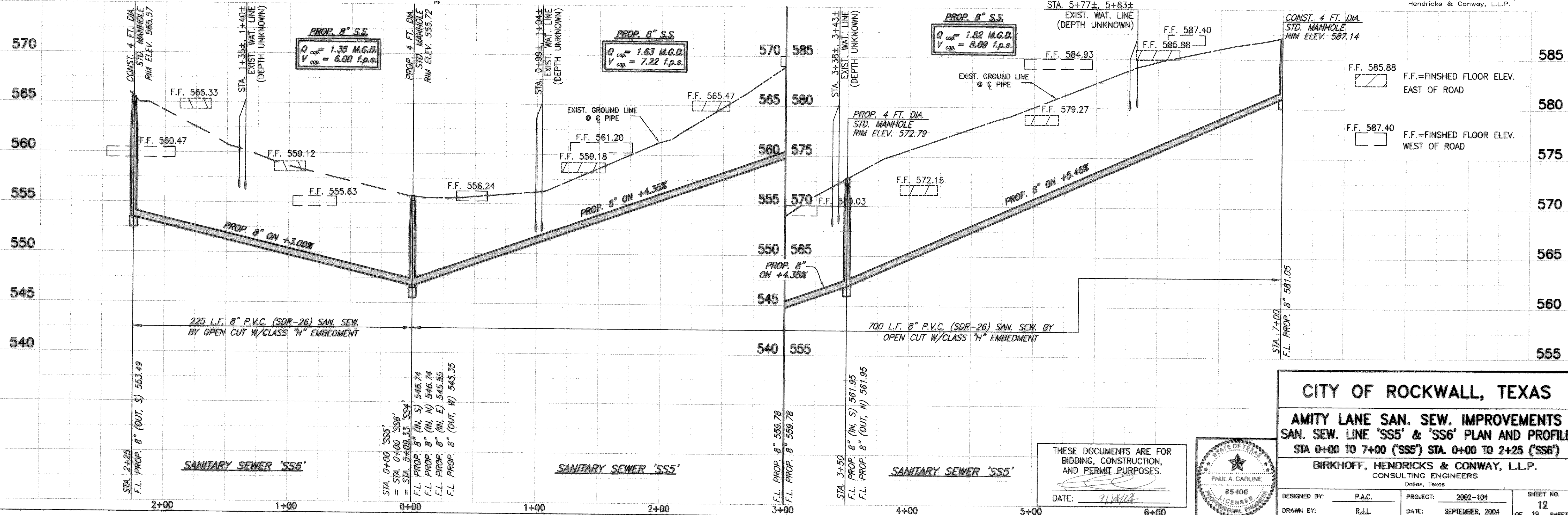
These plans and related specifications
were prepared for construction of this
specific project only. Reuse of these
documents is not permitted without
written authorization of Birkhoff,
Hendricks & Conway, L.L.P.

This record drawing is a compilation of the sealed engineering drawing for this project; modified by addenda, change orders and information furnished by the contractor. The information shown on the record drawings that was provided by the contractor or others not associated with the design engineer cannot be verified for accuracy or completeness. This original sealed drawing is on file at the offices of Birkhoff, Hendricks & Conway, L.L.P.

BY PAC DATE 1/19/07

09/14/04 KAB H:\ROCKWALL\2002\104\BASE\TOPO-BASE, MASTER SURVEY, SanSewSS1 Rev(2)

SUBDIVISION LINE
AIRPORT ACRES ADDITION
E.M. ELLIOTT SURVEY
ABST. NO. 77



CITY OF ROCKWALL, TEXAS

AMITY LANE SAN. SEW. IMPROVEMENTS
SAN. SEW. LINE 'SS5' & 'SS6' PLAN AND PROFILE
STA 0+00 TO 7+00 ('SS5') STA. 0+00 TO 2+25 ('SS6')

BIRKHOFF, HENDRICKS & CONWAY, L.L.P.
CONSULTING ENGINEERS
Dallas, Texas

DESIGNED BY: P.A.C. PROJECT: 2002-104 SHEET NO. 12
DRAWN BY: R.J.L. DATE: SEPTEMBER, 2004 OF 19 SHEETS

THESE DOCUMENTS ARE FOR
BIDDING, CONSTRUCTION,
AND PERMIT PURPOSES.

DATE: 9/14/04

