

DAVID HARR SURVEY
ABST. NO. 102

AIRPORT ACRES ADDITION

JOHNNY, JR. & NICOLE BENNETT
LOT 20
VOL. 1494, PG. 118

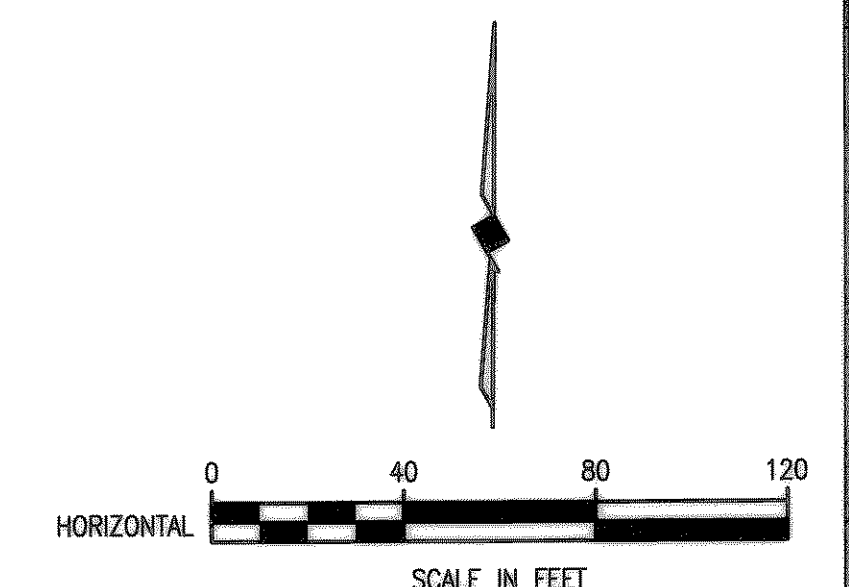
MICHAEL TAYLOR, ET UX
LOT 21
VOL. 128, PG. 827

GREENLEE ADDITION

E.M. ELLIOTT SURVEY
ABST. NO. 77

DELFINO & ROGELIO RODRIGUEZ
LOT 22
VOL. 1273, PG. 216

SANITARY SEWER SERVICES	
LOCATION	PROP. 4" SERVICES (L.F.)
STA. 0+80 (SS4)	15' SOUTH
STA. 3+85 (SS4)	15' SOUTH
FURNISH & INSTALL: 1-8" x 4" WYE 4" P.V.C. WASTEWATER LATERAL CONNECTION	



CITY OF ROCKWALL BENCHMARK
R016
ELEV. 558.719

T.B.M. 346
SANITARY SEWER MANHOLE RIM AT
SAN. SEW. LINE 'SS1' STA. 0+00
N 7024055.4568, E 2601761.3699
ELEV. 559.52

T.B.M. 101
60D NAIL ON NORTH SIDE OF AIRPORT ROAD,
SAN. SEW. LINE 'SS1' STA. 39+24.9, 38.30' LT.
N 7025851.5998, E 2604704.5991
ELEV. 589.49

T.B.M. 100
S.W.B. MANHOLE RIM NORTH SIDE OF AIRPORT ROAD,
SAN. SEW. LINE 'SS1' STA. 64+33.53, 47.06' LT.
N 7025889.4352, E 2607135.3028
ELEV. 607.63

R.G. STEPHENS, JOSEPH FUNK
AND J.E. OVERALL, JR.
TRACT 26
VOL. 97, PG. 420

This record drawing is a compilation of the sealed engineering drawing for this project; modified by addenda, change orders and information furnished by the contractor. The information shown on the record drawings that was provided by the contractor or others not associated with the design engineer cannot be verified for accuracy or completeness. This original sealed drawings are on file at the offices of Birkhoff, Hendricks & Conway, L.L.P.

BY PAC DATE 1/19/07

These plans and related specifications were prepared for construction of this specific project only. Reuse of these documents is not permitted without written authorization of Birkhoff, Hendricks & Conway, L.L.P.

REMOVE EXISTING 3-30" CMP CULVERTS
FURNISH & INSTALL
3-36" RCP CULVERTS
2-TXDOT TYPE CH-PW-O HEADWALLS
W/ CONCRETE RIP-RAP

N 7026921.6482
E 2604312.6961
FURNISH & INSTALL 8" PLUG
END PROP. SAN. SEW.
LINE 'SS7'

REMOVE EXISTING
36" CULVERTS
FURNISH & INSTALL
3-36" RCP CULVERTS
2-TXDOT TYPE CH-PW-O
HEADWALLS W/ CONCRETE
RIP-RAP

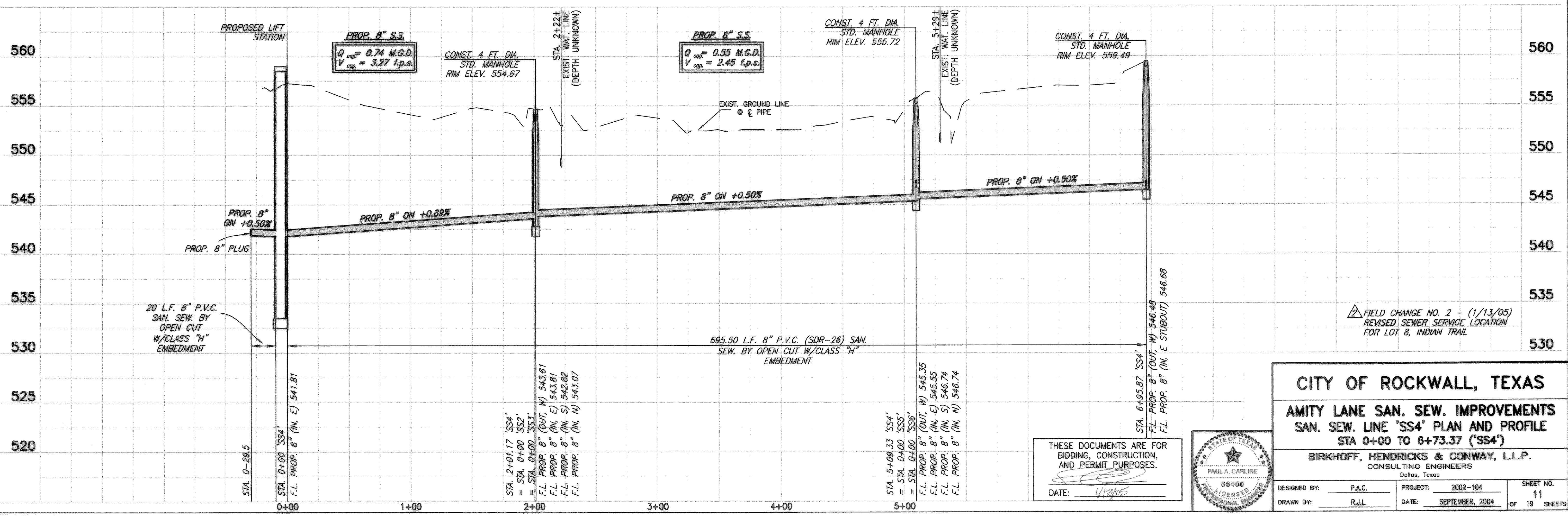
N 7026923.1114
E 2605039.7438
STA. 6+95.87
CONST. 4 FT. DIA. MANHOLE
CONST. 5 L.F. 8" STUBOUT (NORTH)
ON +1.00% GRADE
END PROP. SAN. SEW. LINE 'SS4'

PROPOSED LIFT STATION

PROPOSED 'SS4'
8" SANITARY SEWER

PROPOSED 20' PERMANENT
SANITARY SEWER EASEMENT

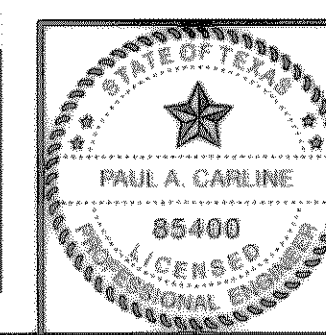
PROPOSED 25' TEMPORARY
CONSTRUCTION EASEMENT



FIELD CHANGE NO. 2 - (1/13/05)
REVISED SEWER SERVICE LOCATION
FOR LOT 8, INDIAN TRAIL

THESE DOCUMENTS ARE FOR
BIDDING, CONSTRUCTION,
AND PERMIT PURPOSES.

DATE: 1/19/07



CITY OF ROCKWALL, TEXAS

AMITY LANE SAN. SEW. IMPROVEMENTS
SAN. SEW. LINE 'SS4' PLAN AND PROFILE
STA 0+00 TO 6+73.37 ('SS4')

BIRKHOFF, HENDRICKS & CONWAY, L.L.P.
CONSULTING ENGINEERS
Dallas, Texas

DESIGNED BY: P.A.C. PROJECT: 2002-104 SHEET NO. 11
DRAWN BY: R.J.L. DATE: SEPTEMBER, 2004 OF 19 SHEETS

01/13/05 KAB H: ROCKWALL 2002104 SHEETS 2002104-SS10-S&DWG SCALE: 1"=40' XREF: ROCKWALL 2002104-BASE-TOPO-BASE, MASTER SURVEY, S&S&SS1 Rev(2)