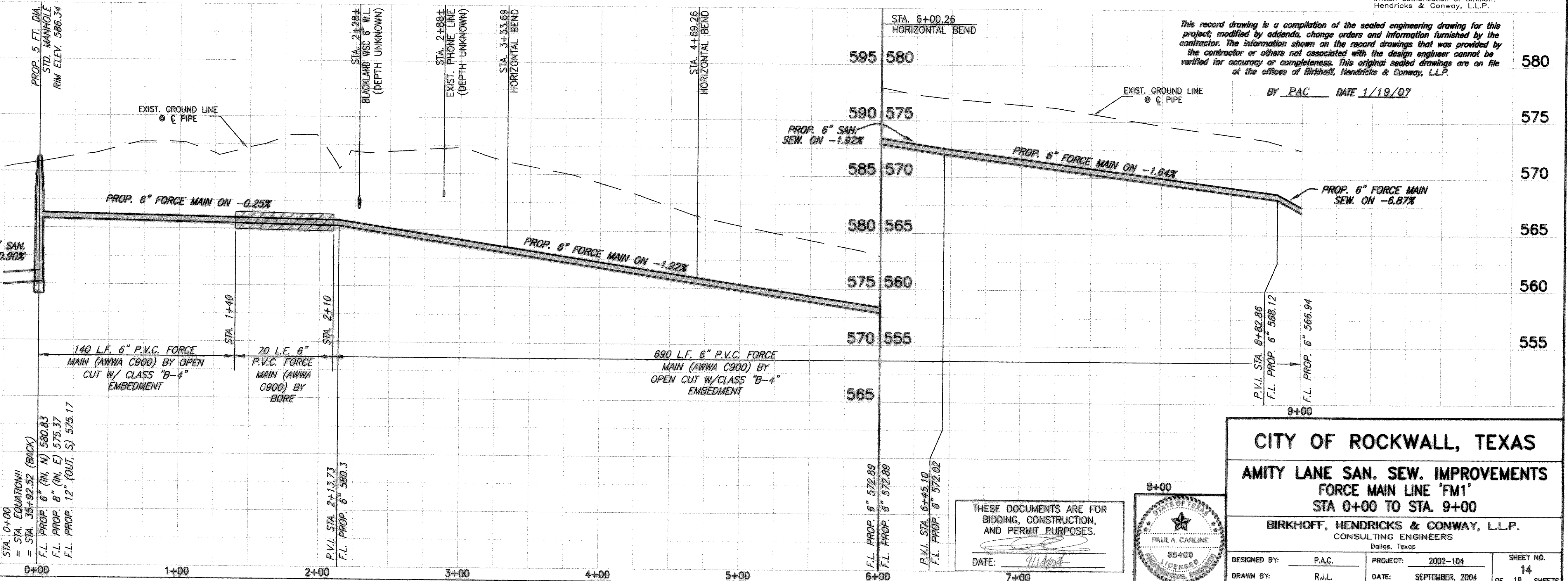
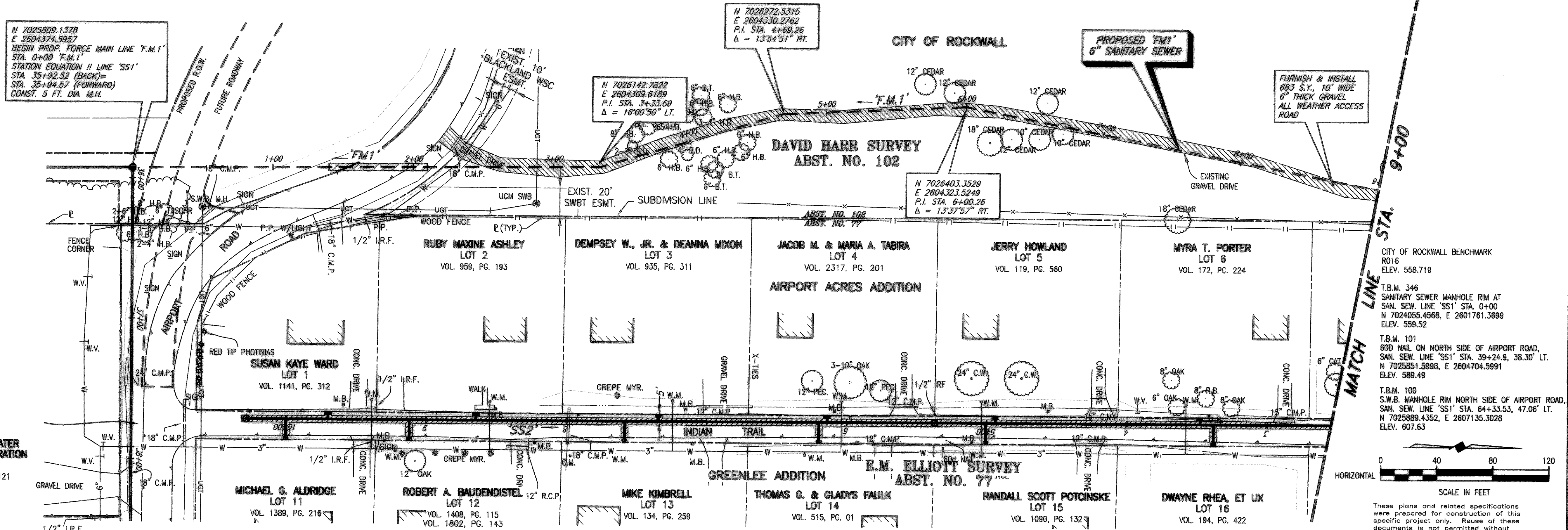


09/14/04 KAB H:\ROCKWALL\2002\04\SS13-FM1A.DWG SCALE: 1"=40' XREF: ROCKWALL\2002\04\BASE-MASTER SURVEY_SmSewSS1 Rev(2)

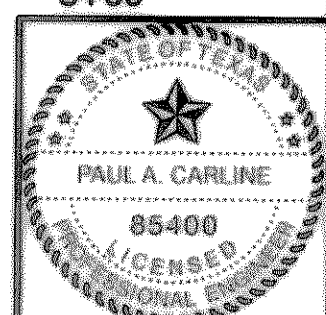


This record drawing is a compilation of the sealed engineering drawing for this project; modified by addenda, change orders and information furnished by the contractor. The information shown on the record drawings that was provided by the contractor or others not associated with the design engineer cannot be verified for accuracy or completeness. This original sealed drawings are on file at the offices of Birkhoff, Hendricks & Conway, L.L.P.

BY PAC DATE 1/19/07

CITY OF ROCKWALL, TEXAS
AMITY LANE SAN. SEW. IMPROVEMENTS
FORCE MAIN LINE 'FM1'
STA 0+00 TO STA. 9+00

BIRKHOFF, HENDRICKS & CONWAY, L.L.P.
 CONSULTING ENGINEERS
 Dallas, Texas



THESE DOCUMENTS ARE FOR
 BIDDING, CONSTRUCTION,
 AND PERMIT PURPOSES.
 DATE: 9/14/04

DESIGNED BY: P.A.C. PROJECT: 2002-104 SHEET NO. 14
 DRAWN BY: R.J.L. DATE: SEPTEMBER, 2004 OF 19 SHEETS