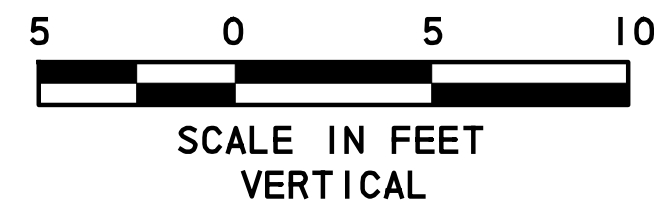
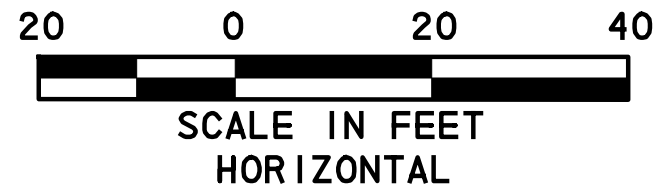
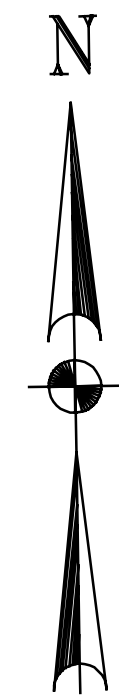
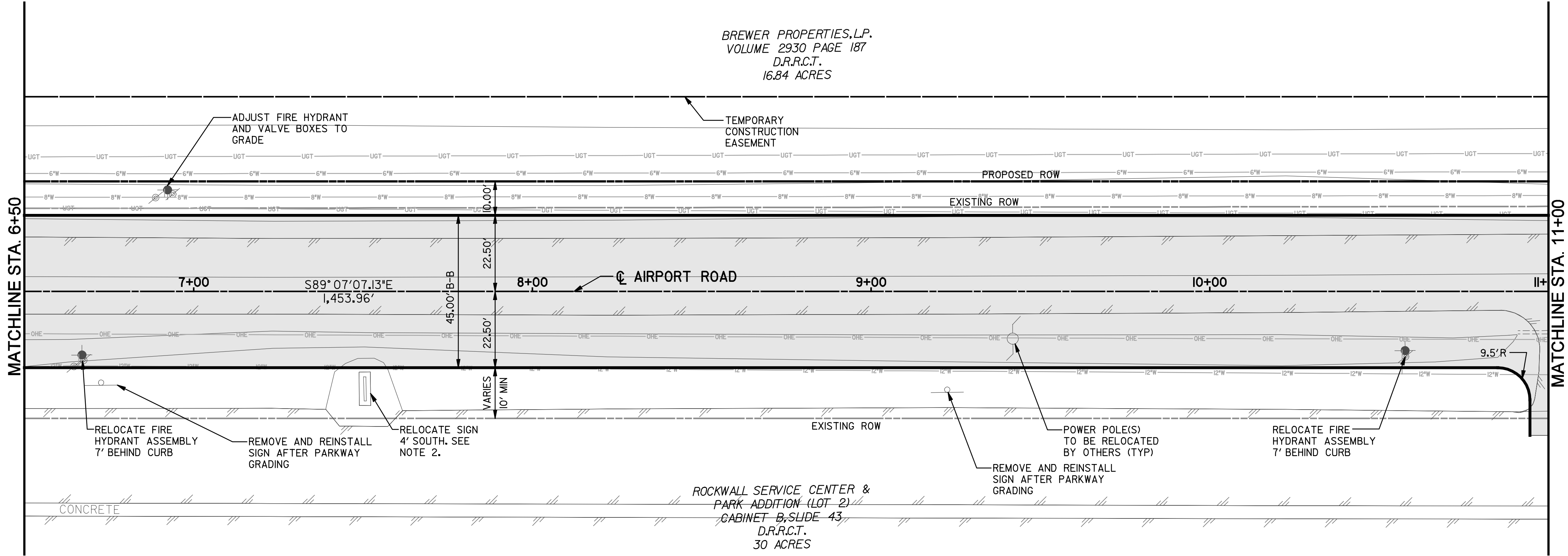


\\usdall1fp002\PM\4328\Airport-Road\CADD\Sheet\Airport-Road_Record Drawings_8-3-10\13_PP_02.dgn
8/7/2012



LEGEND

- PROPOSED CONCRETE PAVEMENT
- PROPOSED HMAC PAVEMENT
- EXISTING CONCRETE TO BE REMOVED
- CURB INLET
- MANHOLE
- DRAINAGE FLOW
- SPOT ELEV. (PROP.)

NOTE:



- ALL DIMENSIONS ARE TO BACK OF CURB UNLESS OTHERWISE NOTED.
- CONTRACTOR SHALL TAKE NECESSARY MEASUREMENTS OF THE EXISTING CONCRETE BASE FOR THE PARK SIGN AND THE ASSOCIATED RAISED FLOWER BED TO ALLOW THE CONTRACTOR TO REPLICATE THE EXISTING CONDITIONS AT THE NEW SIGN LOCATION.

RECORD DRAWING

This drawing is a compilation of the original sealed engineering drawing and modifications by addenda, change orders and information furnished by the contractor. Information shown that was provided by the contractor and others not associated with the design engineer cannot be verified for accuracy or completeness. Original sealed drawing is on file at the office of AECOM Technical Services, Inc., TBPE REG. NO. F-3580

ORIGINAL DRAWING SEALED & SIGNED BY

T.H. Gaertner, P.E.
TX NO. 37124

NO.	REVISION	BY	DATE
AIRPORT ROAD			
PLAN & PROFILE STA. 6+50 TO STA. 11+00			
 City of Rockwall, Texas			
 AECOM TECHNICAL SERVICES, INC. 16000 DALLAS PARKWAY, SUITE 350 DALLAS TEXAS 75248 WWW.AECOM.COM TBPE REG. NO. F-3580			
Unit	PW-DAL	Scales	8/2/2012
Designed	THG	Checked	THG
Drawn	JJ	Approved	THG
Project No.	60004153	Sheet	13 of 26

