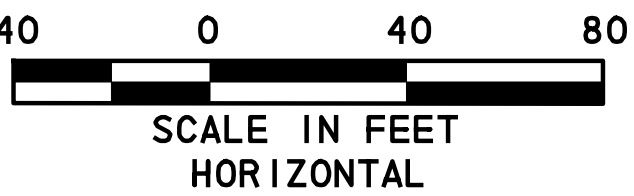
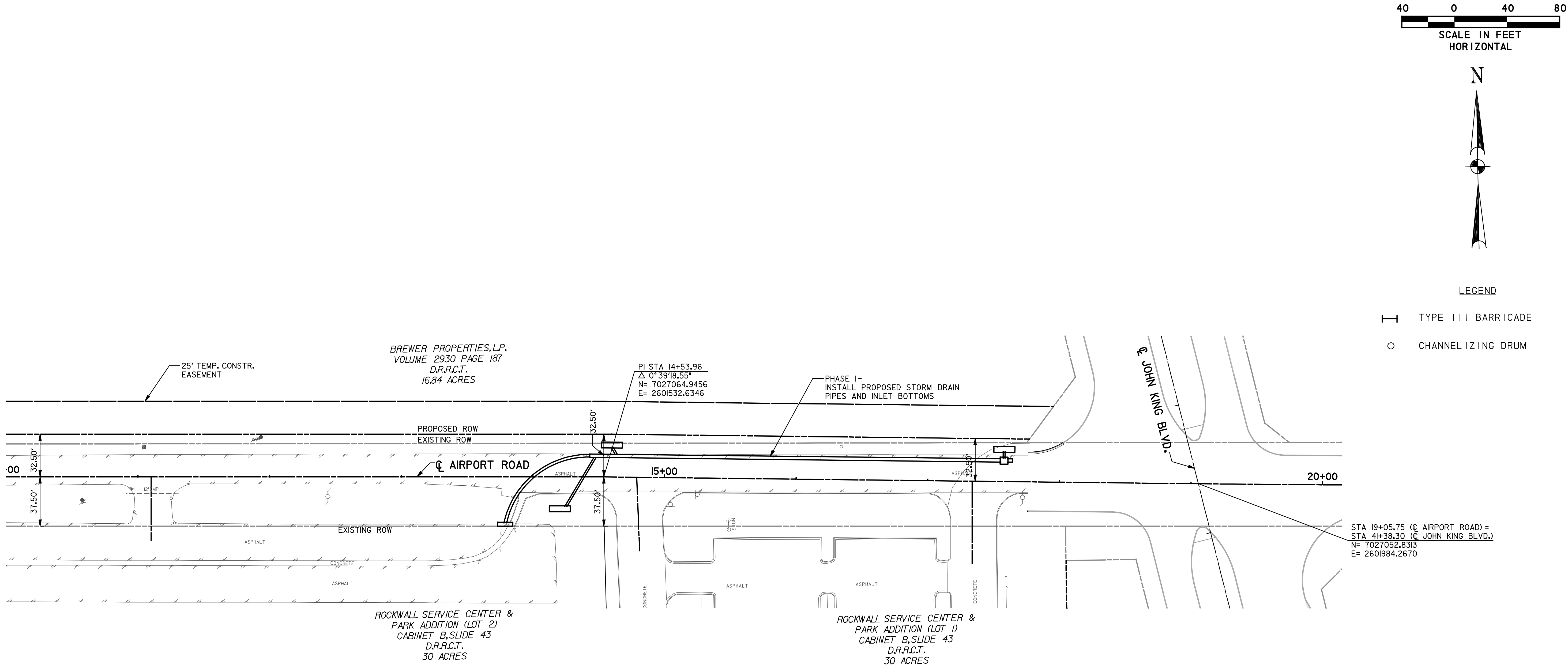


\\usdall1fp002\PM\4328\A\Report- Road\CADD\Sheet\A\Airport- Road\Record Drawings-8-3-10\07_TCF_01.dgn
8/7/2012



LEGEND

- TYPE III BARRICADE
- CHANNELIZING DRUM

NOTES:

1. PHASE I CONSISTS OF INSTALLING STORM DRAIN PIPES AND INLETS.
2. TWO WAY TRAFFIC MUST BE MAINTAINED BETWEEN 4:00 PM AND 9:00 AM.
3. TRAFFIC MAY BE REDUCED TO ONE LANE BETWEEN 9:00 AM AND 4:00 PM WITH THE USE OF FLAGMEN AND APPROPRIATE SIGNAGE.

RECORD DRAWING

This drawing is a compilation of the original sealed engineering drawing and modifications by addenda, change orders and information furnished by the contractor. Information shown that was provided by the contractor and others not associated with the design engineer cannot be verified for accuracy or completeness. Original sealed drawing is on file at the office of AECOM Technical Services, Inc., TBPE REG. NO. F-3580

ORIGINAL DRAWING
SEALED & SIGNED BY
T.H. Gaertner, P.E.
TX NO. 37124

NO.	REVISION	BY	DATE
AIRPORT ROAD			
PHASING & TRAFFIC CONTROL PLAN CONSTRUCTION PHASE 1			
City of Rockwall, Texas			
AECOM AECOM TECHNICAL SERVICES, INC. 16000 DALLAS PARKWAY, SUITE 350 DALLAS TEXAS 75248 WWW.AECOM.COM TBPE REG. NO. F-3580			
Unit	PW-DAL	Scales Horz AS SHOWN Vert AS SHOWN	Date 8/2/2012
Designed	THG	Checked THG	Project No. 60004153
Drawn	FG	Approved THG	Sheet 7 of 26